

I.631+x | Revolving handle

Technopolymer

METRIC

✓ RoHS

PP

+176 °F
+32 °F

MATERIAL

High-resilience polypropylene based (PP) technopolymer, black colour, matte finish.

STANDARD EXECUTION

Zinc-plated steel pin, hexagon socket at threaded end.

I.701+x | Revolving handles

Technopolymer

METRIC

✓ RoHS

PA

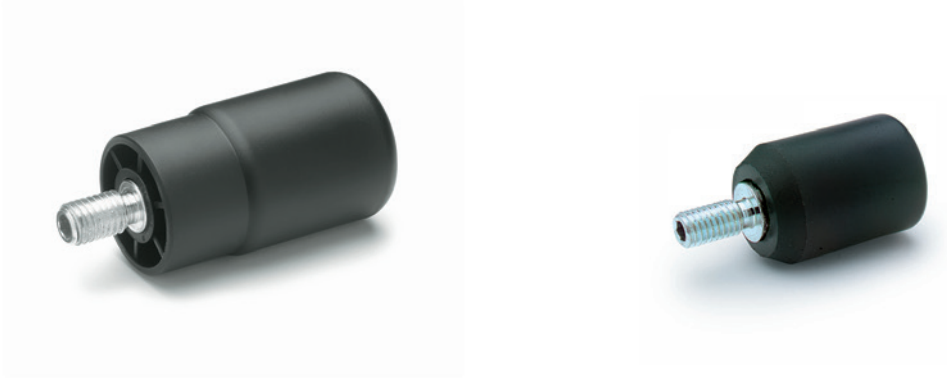
+194 °F
-4 °F

MATERIAL

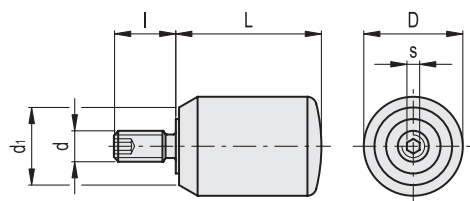
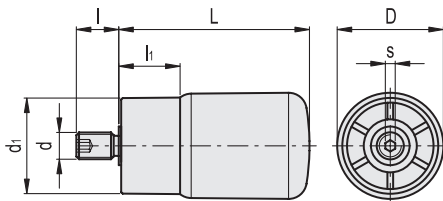
Polyamide based (PA) technopolymer, black colour, matte finish.

STANDARD EXECUTION

Zinc-plated steel pin, hexagon socket at threaded end.



Conversion Table	
1 mm = 0,039 inch	
L	
mm	inch
20	0.79
23	0.91
63	2.48



METRIC

METRIC

Code	Description	D	L	d6g	d1	l	l1	s	△
122622	I.631/65+x-M10	35	63	M10	32	17	19	5	79

Code	Description	D	L	d6g	d1	l	s	△
24974	I.701/20+x-M4	13.5	20	M4	11	8	2	7
24979	I.701/20+x-M5	13.5	20	M5	11	10	2.5	10
24980	I.701/23+x-M5	16	23	M5	12.5	10	2.5	12