

Hardware

For miniature and industrial switches

Standard hardware is automatically supplied with the switches
 Non-standard hardware is presented below

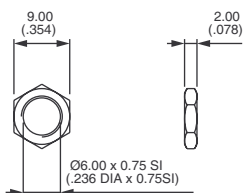


Hardware supplied with sealing options :

- K version : 2 hex nuts + sealing washer
- X408 option : 1 hex nut + 1 O-ring

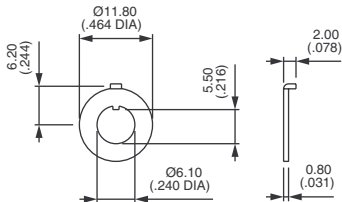
STANDARD HARDWARE FOR SWITCHES Ø 6 (.236) - ALL SERIES

KNURLED NUT



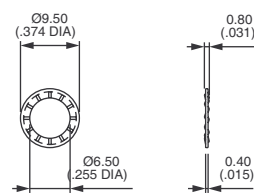
Nickel plated **U208**
 Black **U726**

KNURLED NUT



Nickel plated **U198**
 Black **U728**

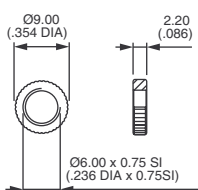
KNURLED NUT



Stainless steel **U215**

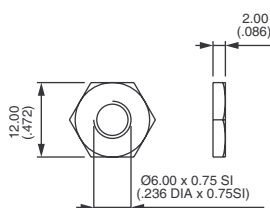
NON-STANDARD HARDWARE FOR SWITCHES Ø 6 (.236) - 5000 SERIES

KNURLED NUT



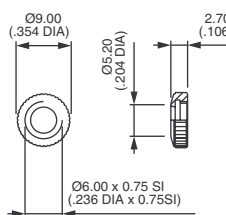
Chrome plated **U826**

SPECIAL NUT 12 (.472) ACROSS FLATS

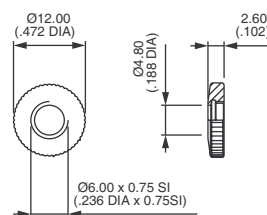


Chrome plated **U1916**

KNURLED CAP NUTS



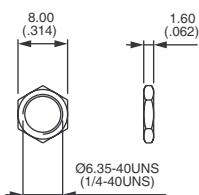
Chrome plated **U461**
 Black **U502**



Chrome plated **U232**

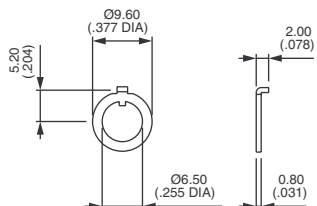
STANDARD HARDWARE FOR SWITCHES Ø 6.35 (1/4) - ALL SERIES

HEX NUT



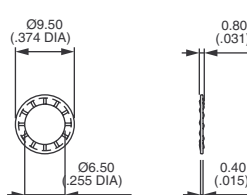
Nickel plated **U369**

LOCKING RING



Nickel plated **U229**
 Black **U230**

LOCKWASHER



Chrome plated **U501**

SERIES	HARDWARE SUPPLIED (UNSEALED TYPES)		
	HEX NUT	LOCKING RING	LOCKWASHER
SF	2	1	1
11000	2	1	1
13000	2	1	1
18000-8000-SP	2	1	1
21000N	2	-	-
5000	2	1	1
9400-9600	2	-	1

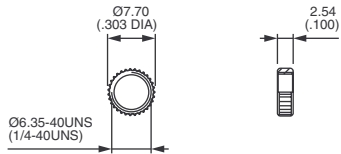
The company reserves the right to change specifications without notice.

Hardware

For miniature and industrial switches

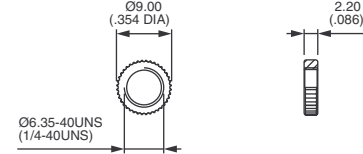
NON-STANDARD HARDWARE FOR SWITCHES Ø 6.35 (1/4) - ALL SERIES

KNURLED NUT



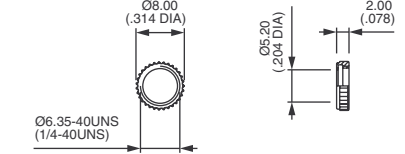
Nickel plated **U369**

KNURLED NUT



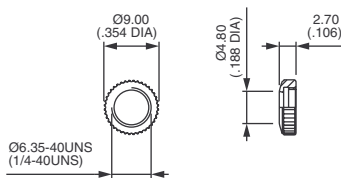
Nickel plated **U229**
Black **U230**

KNURLED NUT



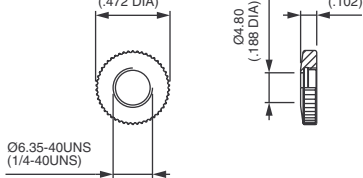
Chrome plated **U501**

KNURLED CAP NUT



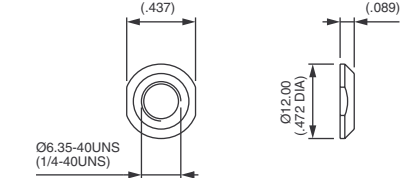
Chrome plated **U216 ***
Black **U218**

KNURLED CAP NUT



Chrome plated **U268 ***
Black **U725**

DRESS NUT

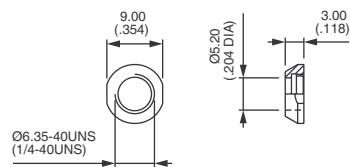


Nickel plated **U443**
Black **U848**

* U216 and U268 : consult factory for mounting on 11000 three and four pole, and 5000 locking lever models.

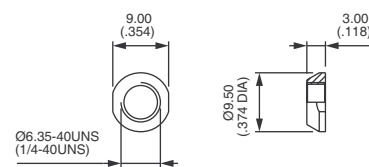
OTHER HARDWARE FOR SWITCHES Ø 6.35 (1/4) - ALL SERIES

CONIC CAP NUT



Nickel plated **U500**

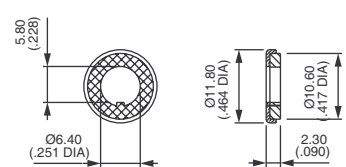
CONIC NUT



Chrome plated **U542**
Nickel plated **U561**

SEALING WASHER

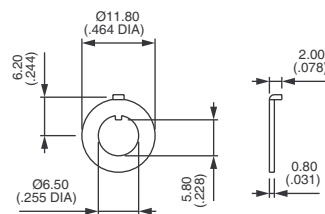
for keyway bushing



U360

SPECIAL LOCKING RING

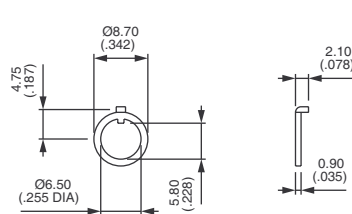
Spacing 6,2 mm (.244)



Nickel plated **U368**

SPECIAL LOCKING RING

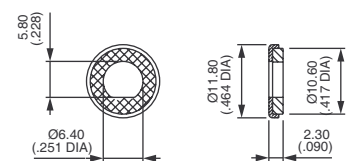
Spacing 4,75 mm (.187)



Nickel plated **U409**

SEALING WASHER

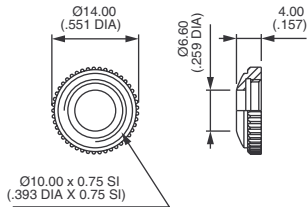
for flatted bushing



U5141

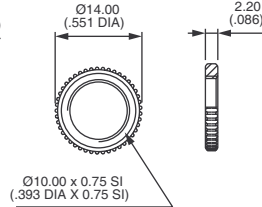
STANDARD HARDWARE FOR SWITCHES Ø 10 (.393) 10400 AND 10600 SERIES

KNURLED CAP NUT



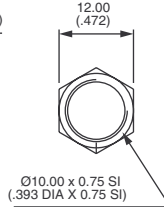
Chrome plated U2220

KNURLED NUT



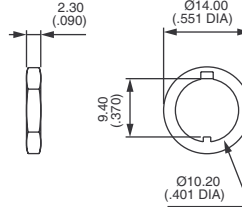
Nickel plated U2311

HEX NUT



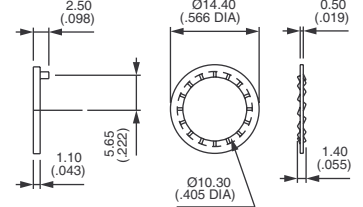
Nickel plated U842

LOCKING RING



Nickel plated U844

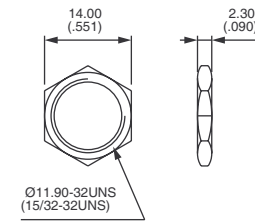
LOCKWASHER



Zinc plated steel U843

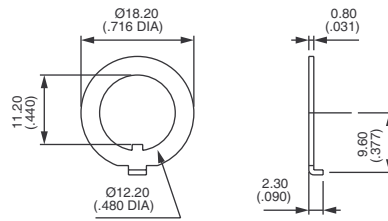
STANDARD HARDWARE FOR SWITCHES Ø 11.9 (15/32) 12000, 13000X768 AND 5000M SERIES

HEX NUT



Nickel plated U162
Black U41

LOCKING RING

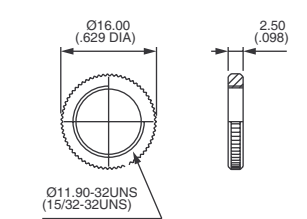


Nickel plated U121
Black U12

SERIES	HARDWARE SUPPLIED	
	HEX NUT	LOCKING RING
12000	2	1
13000X768	1	-
5000M	2	1
8000X718	2	1

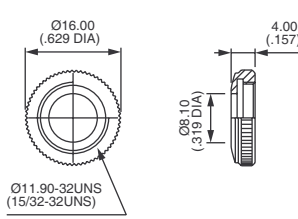
NON-STANDARD HARDWARE FOR SWITCHES Ø 11.9 (15/32) 12000, 13000X768 AND 5000M SERIES

KNURLED NUT

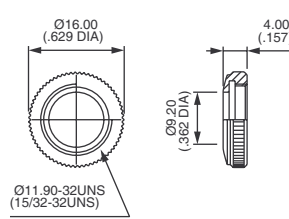


Nickel plated U53
Black U1634

KNURLED CAP NUTS

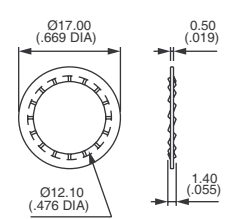


Chrome plated U124



Chrome plated U123

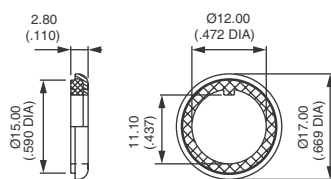
LOCKWASHER



Zinc plated steel U13

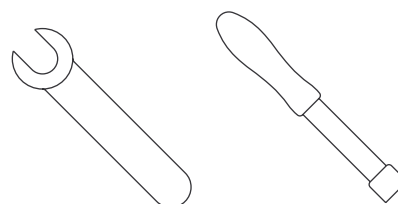
OTHER HARDWARE

SEALING WASHER



U60

WRENCHES



Available for some accessories.
Consult factory.

Hardware

For miniature and industrial switches

NUTS FOR BUSHING Ø 11.9 (15/32) AND Ø 12 (.472)

- Standard hardware is indicated by darkened boxes.
- For details of hardware supplied, please refer to beginning of each series.
- Special hardware is to be ordered separately.

NUTS					
			Hex cap nut	Knurled cap nut	
BUSHING Ø 11,9 (15/32) THREAD 0,794-32UNS SERIES 3500 - 6000					
Chrome plated brass		U92		U123	
Nickel plated brass	U53	U162			
Black finish	U1634	U41 or U3169		U2226	
BUSHING Ø 12 (.472) THREAD 0,75 SERIES IB/IS - IC - IH - IL - IM - IP - 660 - 600H - 600NH - 1000 - 1200 - 1500 - 1600 - 1700 - 3600 - 4000					
Chrome plated brass	U412	U212	U35	U117	
Nickel plated brass	U411	U166		U117-5	
Black finish	U413	U183 or U3168		U129	
Gold plated brass	U410-4			U1862	
Plastic					U4248

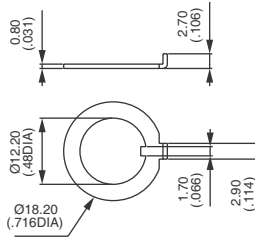
INSULATED NUTS U520 FOR BUSHING Ø 12 (.472)

NUTS	
FOR THREADED BUSHING Ø 12 (.472) X 0,75 IS SERIES 1500 - 4000 - 600NH - 6-600NH	
Blue	U521
Black	U522
Green	U523
Greys	U524
Yellow	U525
Red	U526
White	U527/1
Chrome plated	U528
Orange	U529

The locking ring U121 (nickel plated) or U12 (black) is only provided with tropicalized switches version T or G and with series 3500 - 6000. The lockwasher U13 must be ordered separately, except for series 660, 3500 and 6000.

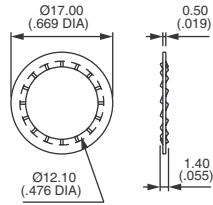
HARDWARE FOR SWITCHES Ø 12 (.472) AND 11.9 (15/32)

LOCKING RING



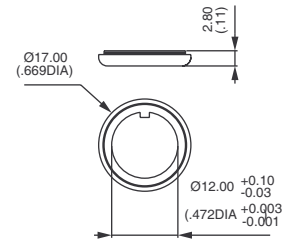
Nickel plated U121
Black U12

LOCKWASHER



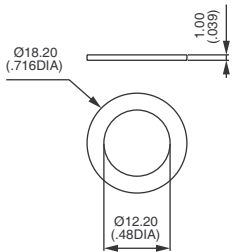
Zinc plated steel U13

SEALING WASHER



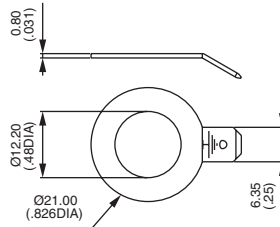
Stainless steel and neoprene U60

SEALING WASHER FOR BOOTS



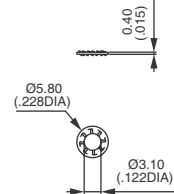
Nylon U21

GROUND CONNECTOR



Nickel plated U187

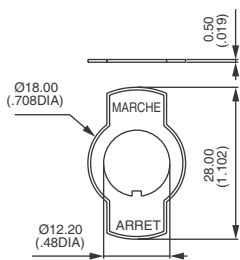
LOCKWASHER



Zinc plated steel U14

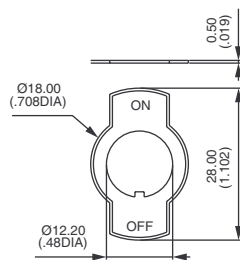
PLATES FOR SWITCHES Ø 12 (.472) AND 11.9 (15/32)

MARCHE - ARRÊT



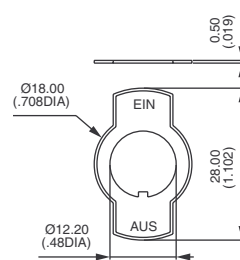
U17

ON - OFF



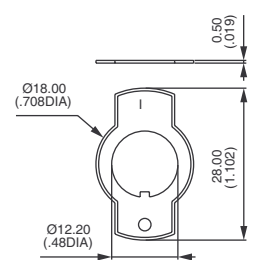
U19

EIN - AUS



U99

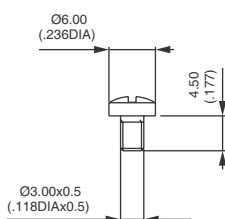
I - O



U1050

CONNECTING SCREW

SUPPLIED WITH THE SWITCHES



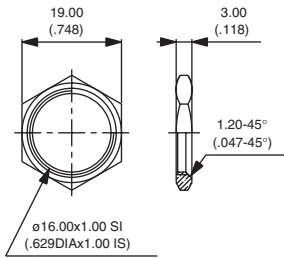
U03

Hardware

For miniature and industrial switches

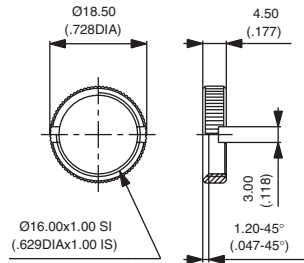
HARDWARE FOR AV SERIES (ANTI-VANDAL AND SECURITY PUSHBUTTON SWITCHES)

HEX NUT FOR MODELS Ø 16 (.629)



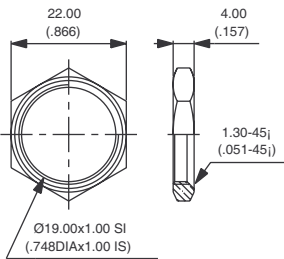
10-621

KNURLED NUT FOR MODELS Ø 16 (.629)



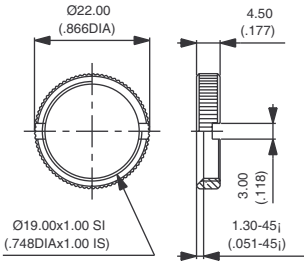
10-960-5

HEX NUT FOR MODELS Ø 19 (.748)



10-855-5

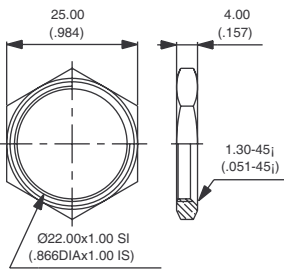
KNURLED NUT FOR MODELS Ø 19 (.748)



U1977-5

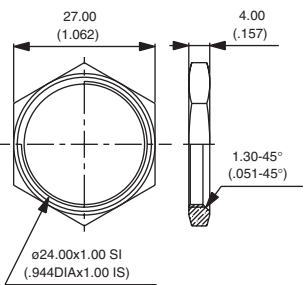
Wrench for nut U1977-5 available under part number U1929.

HEX NUT FOR MODELS Ø 22 (.866)



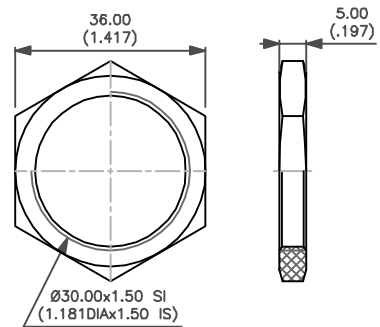
10-856-5

HEX NUT FOR MODELS Ø 24 (.944)



U2059-5

HEX NUT FOR MODELS Ø 30 (1.181)



U6730

All above nuts are made of nickel plated brass.
For switches with front panel sealing (option K), a neoprene O-ring is supplied with each nut.