

*New*

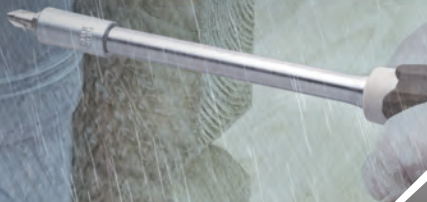
**Wood-Compo  
Socket Wrench Set**

# Impeccably Non-Slip



## *Non-slip in the rain*

Sudden rain when working outside...  
In this situation, the wood-compo non-slip grip performs efficiently.



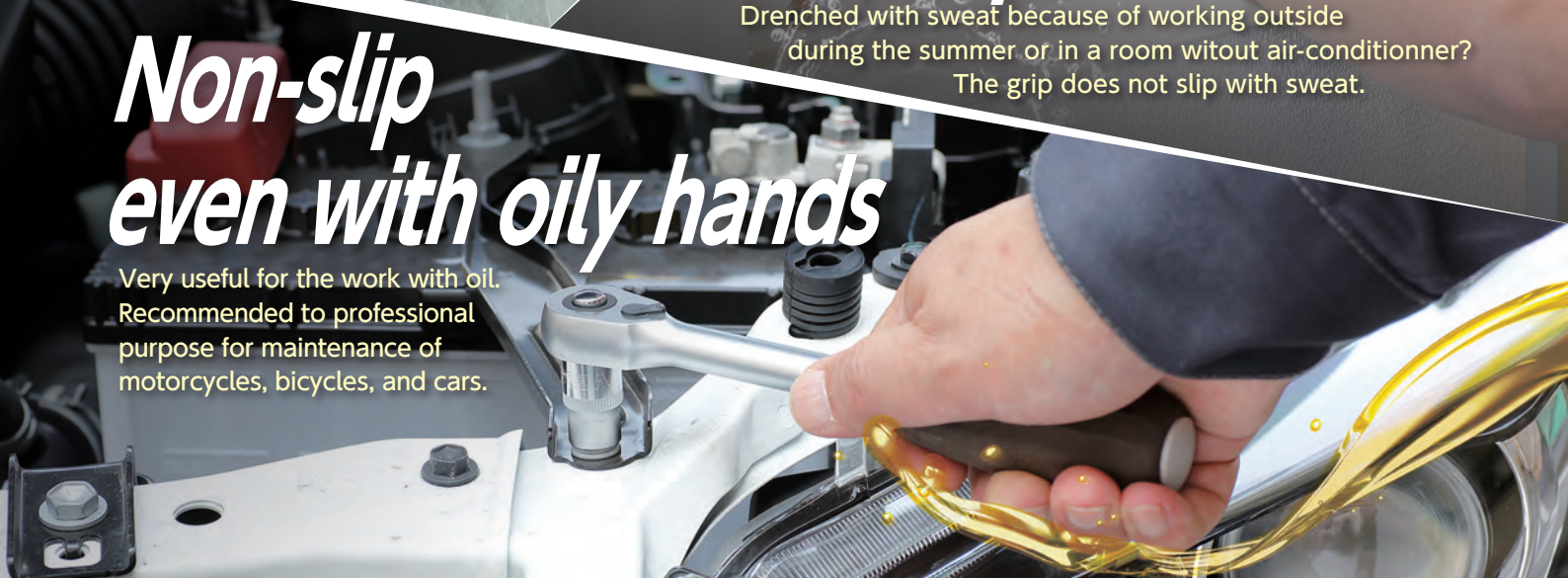
## *Non-slip with sweat*

Drenched with sweat because of working outside during the summer or in a room without air-conditioner?  
The grip does not slip with sweat.



## *Non-slip even with oily hands*

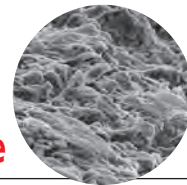
Very useful for the work with oil.  
Recommended to professional purpose for maintenance of motorcycles, bicycles, and cars.





# Ultra Small Head with 72-tooth Gear

Enlargement of the grip surface



## Wood-Plastic Composite

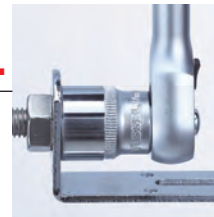
The grip part is formed by the mold injection of a "wood resin". The product offers to the users such texture and comfort as the natural wood materials.



### Ratchet Handle

**Wedge type ratchet realizes an ultra small and highly durable head.**

High durability and less gear skipping because the wedge-shaped gears firmly engage the gears.



### Non-slip wood-composite handle

Reliable operation as the hand firmly holds the grip from the moment when you start fastening a screw.

Chrome vanadium steel

### Push-release type

Easy attachment and detachment of sockets and joints by pushing the button.



### Sockets

**Surface contact avoiding the damage on the edges of bolts or nuts.**



Knurled for fast fastening

Hexagonal socket are adopted, suitable for 72 teeth gear mechanism of the ratchet handle, which operates by little wrist movement.

1/4"sq. (6.35mm)

3/8"sq. (9.5mm)

### Applications

#### Wood-compo series

HRW2001M-W  
6.35sq



HRW3002M-W  
9.5sq



HRW2303M-W  
6.35sq  
9.5sq



	Factory, Iron Works	Electric Facilities	Solar Mounting Structures	Automobile	Motorcycles	Piping	Machinery	Agricultural Machinery
HRW2001M-W 6.35sq	★★	★★	★★		★★★★	★★★★	★★★★	
HRW3002M-W 9.5sq	★★★★			★★★★			★★★★	★★
HRW2303M-W 6.35sq 9.5sq	★★	★★★★	★★★★	★★★★	★	★		★★★★

Rank ★★★★★: Most Recommended ★★: Highly recommended ★: Recommended



# Wood-Compo Socket Wrench Set

1/4" sq. (6.35mm) 36pcs.

No. **HRW2001M-W**



## Set Contents

Wood-compo ratchet handle 1/4" sq. (6.35mm)

Wood-compo stubby handle 1/4" sq. (6.35mm)

Universal socket adaptor 1/4" sq. (6.35mm)

Extension bar Overall length 100mm 1/4" sq. (6.35mm)

Bit socket adaptor 1/4" sq. ⇄ 1/4" hex.

● 1/4" sockets: 4, 4.5, 5, 5.5, 6, 7, 8, 9, 10, 11, 12, 13, 14mm

Bits: ⌀4, ⌀6, ⌀1, ⌀2, ⌀3, H1.5, H2, H2.5, H3, H4, H5, T10, T15, T20, T25, T27, T30, T40

Inner Ctn.: 3 sets Outer Ctn.: 9 sets EDP No.: 162001

3/8" sq. (9.5mm) 16pcs.

No. **HRW3002M-W**



## Set Contents

Wood-compo ratchet handle 3/8" sq. (9.5mm)

Universal socket adaptor 3/8" sq. (9.5mm)

Sliding T-shaped handle 3/8" sq. (9.5mm)

Extension bar Overall length 150mm 3/8" sq. (9.5mm)

Extension bar Overall length 75mm 3/8" sq. (9.5mm)

● 3/8" sockets: 7, 8, 10, 11, 12, 13, 14, 17, 19, 21, 22mm

Inner Ctn.: 3 sets Outer Ctn.: 9 sets EDP No.: 162002

1/4" sq. (6.35mm) / 3/8" sq. (9.5mm) 36pcs.

No. **HRW2303M-W**



## Set Contents

Wood-compo ratchet handle 3/8" sq. (9.5mm)

Wood-compo spinner handle 1/4" sq. (6.35mm)

Universal socket adaptor 3/8" sq. (9.5mm)

Extension bar Overall length 150mm 1/4" sq. (6.35mm)

Bit socket adaptor 1/4" sq. ⇄ 1/4" hex.

● 1/4" sockets: 4, 4.5, 5, 5.5, 6, 7, 8mm

● 3/8" sockets: 10, 11, 12, 13, 14, 17, 19, 21, 22mm

Bits: ⌀4, ⌀6, ⌀1, ⌀2, ⌀3, H3, H4, H5, H6, T10, T15, T20, T25, T30, T40

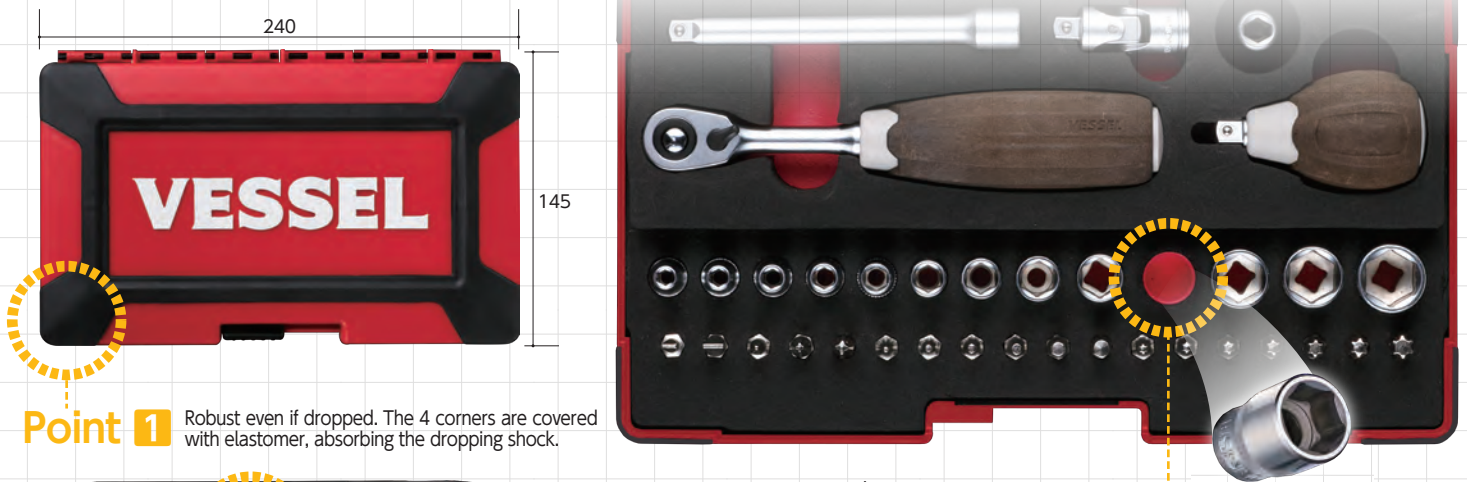
Inner Ctn.: 3 sets Outer Ctn.: 9 sets EDP No.: 162003



# Wood-Compo Socket Wrench Set

**VESSEL**  
Let us think.

## No. HRW Wood-Compo Socket Wrench Set



**Point 1** Robust even if dropped. The 4 corners are covered with elastomer, absorbing the dropping shock.



**Point 2** Slide type lock system firmly locked.



FOD is an abbreviation of "Foreign Object Damage".

This is a term originally from the aircraft industry. For the aircraft maintenance, leaving tools in the engine room may induce big accidents. The countermeasures against misplacement have been in operation. Among these, storage of tools in differently colored double layer urethane foams with a dedicated cutout has been widely adopted, because a missing part is easily recognized.

Case size indicated in metric (mm)

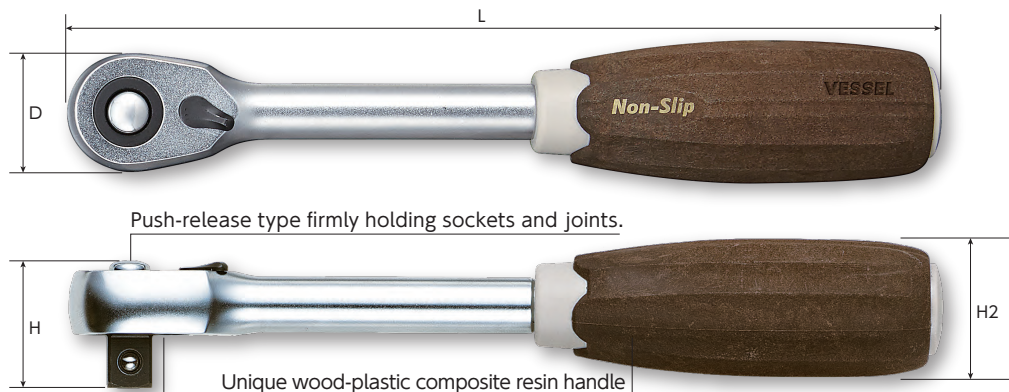
**Point 3** Red color on the bottom of the box appeals the missing of the relevant part.



HRH2-W

HRH3-W

## No. HRH Wood-Compo Ratchet Handle



Push-release type firmly holding sockets and joints.

Unique wood-plastic composite resin handle

72 tooth gear ratchet mechanism most balanced between the handling easiness and durability.

Model	Designation Insertion	Feed Angle	D Head Width	H Thickness incl. SQ head	H2 Grip	L Overall Length	EDP No.
HRH2-W	1/4"sq. (6.35mm)	5°	20mm	20mm	30mm	145mm	162004
HRH3-W	3/8"sq. (9.5mm)	5°	25mm	27mm	30mm	180mm	162005

Inner Ctn.: 6 sets Outer Ctn.: 60 sets



● For safety purposes, read the instruction manual carefully before using the unit. ● Do not use this product in an explosion-proof area. ● A high voltage is applied on this product. Make sure that water, oil, solvents, etc., do not come in contact. ● Avoid dew condensation as it can result in electric shock or product damage. ● Keep away metal objects such as tools or needles, or body parts such as fingers, hands or face from the needle electrode because a high voltage is applied on the needle electrode.

Manufactured by

**VESSEL Co., Inc.**

17-25, Fukae-kita 2-chome, Higashinari-ku, Osaka 537-0001 JAPAN  
Tel : +81(0)6 6976 7778 Fax : +81(0)6 6972 9441

**VESSEL EUROPE**

6, avenue du 1er Mai, ZAE Les Glaises, 91120 Palaiseau FRANCE  
Tel : +33(0)1 69 19 17 42 Fax : +33(0)1 69 19 42 20

E-mail : export@vessel.co.jp URL : <http://www.vessel.co.jp/english/>

●For improvements, the product specifications, size, price and other information may be subject to change without prior notice.

*Distributed by*

Printed in Japan

17073121.01