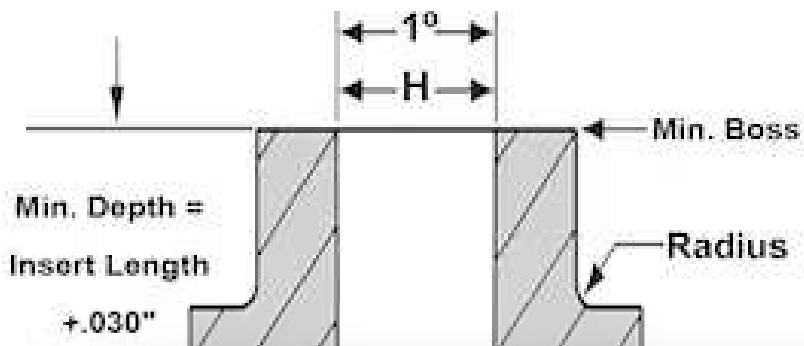
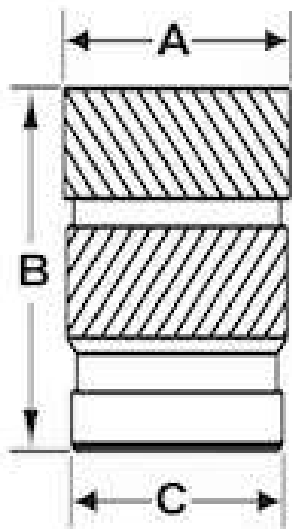


SHOP ONLINE > THREADED INSERTS > HEADED CHEVRON



H1032X250C



- A
- B
- Boss Size
- Brand
- C
- D
- Display Name
- Finish
- Hole Size
- Material
- Series
- Thread Size

PRODUCT OPTIONS

Finish

None

MW Components

Have a question? We can Help!

How can we assist you?

Want to check stock/pricing/lead time

I have a technical question

Need some documentation

I need to talk to a human!!

Choose an option



01 - Cad Plate - Clear Chromate - Commercial
02 - Cad Plate - Clear Chromate
03 - Cad Plate - Yellow Chromate
04 - Chrome over Nickel
05 - Nickel
10 - Chrome - Bright
11 - Chrome - Satin
12 - Zinc - Clear Chromate
13 - Bright Dip
14 - Bright Tin over Copper Flash
15 - Hot Tin Dip
16 - Electro Tin
25 - Black Oxide
27 - Electro Tin - Solder 60/40
28 - Zinc - Yellow Chromate
37 - Nickel - Ductile
42 - Zinc - Black
43 - Zinc - Blue
44 - Electro Tin - Nickel Undercoat