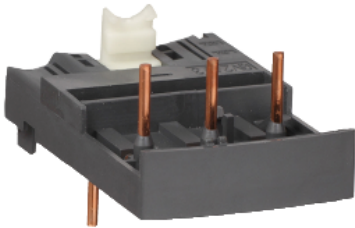


Product data sheet

Specifications



Combination blocks, TeSys Deca, with contactor LC1D09...D38

GV2AF3

Main

Range	Linergy
Product name	FT
Device short name	GV2AF
Product or component type	Combination block
Accessory / separate part category	Connection accessory
Range compatibility	TeSys GV2 TeSys Deca

Complementary

Product compatibility	LC1D09...D38
Poles description	3P
[Ie] rated operational current	32 A
Quantity per set	Set of 10
Net weight	0.04 lb(US) (0.016 kg)

Packing Units

Unit Type of Package 1	PCE
Number of Units in Package 1	1
Package 1 Height	3.74 in (9.500 cm)
Package 1 Width	3.94 in (10.000 cm)
Package 1 Length	5.91 in (15.000 cm)
Package 1 Weight	0.78 oz (22.000 g)
Unit Type of Package 2	BB1
Number of Units in Package 2	10
Package 2 Height	3.74 in (9.500 cm)
Package 2 Width	3.94 in (10.000 cm)
Package 2 Length	5.91 in (15.000 cm)
Package 2 Weight	9.45 oz (268.000 g)
Unit Type of Package 3	S03

Number of Units in Package 3	140
Package 3 Height	11.81 in (30.000 cm)
Package 3 Width	11.81 in (30.000 cm)
Package 3 Length	15.75 in (40.000 cm)
Package 3 Weight	9.25 lb(US) (4.196 kg)

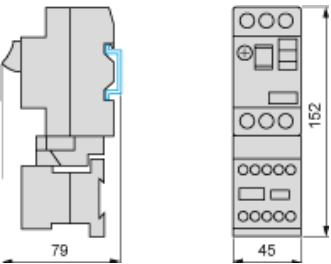
Offer Sustainability

Sustainable offer status	Green Premium product
REACH Regulation	REACH Declaration
REACH free of SVHC	Yes
EU RoHS Directive	Compliant EU RoHS Declaration
Toxic heavy metal free	Yes
Mercury free	Yes
China RoHS Regulation	China RoHS declaration
RoHS exemption information	Yes
Environmental Disclosure	Product Environmental Profile
Circularity Profile	End of Life Information
WEEE	The product must be disposed on European Union markets following specific waste collection and never end up in rubbish bins

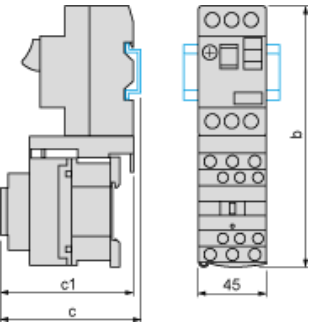
Contractual warranty

Warranty	18 months
----------	-----------

GV2AF01
Combination GV2ME + TeSys k contactor

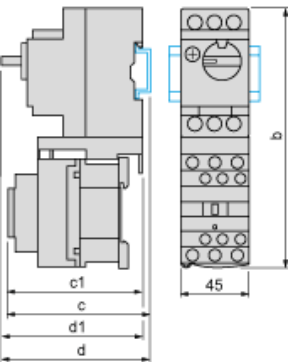


GV2AF3
Combination GV2ME + TeSys d contactor



GV2ME +	LC1D09...D18	LC1D25 and D32
b	176.4	186.8
c1	94.1	100.4
c	99.6	105.9

Combination GV2P + TeSys d contactor



GV2P +	LC1D09...D18	LC1D25 and D32
b	176.4	186.8
c1	100.1	106.4
c	105.6	111.9
d1	95	95
d	100.5	100.5

Recommended replacement(s)