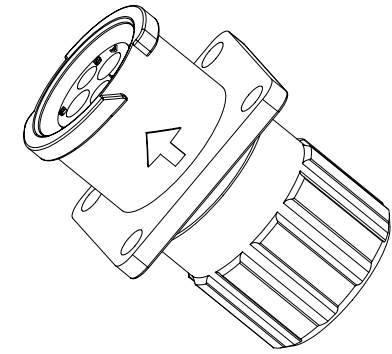
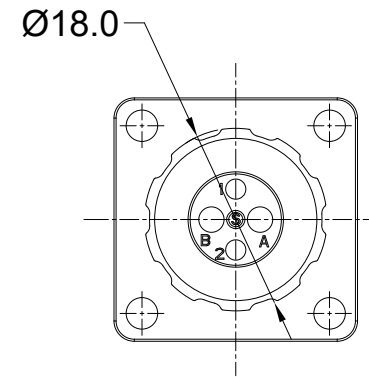
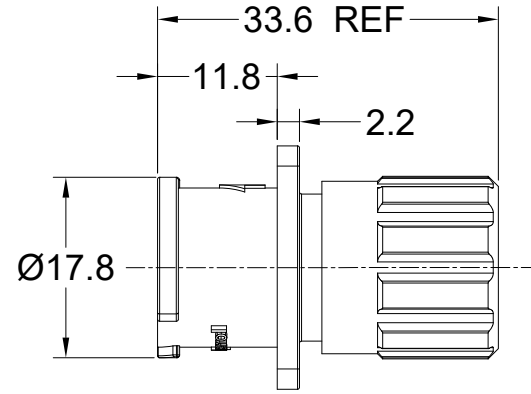
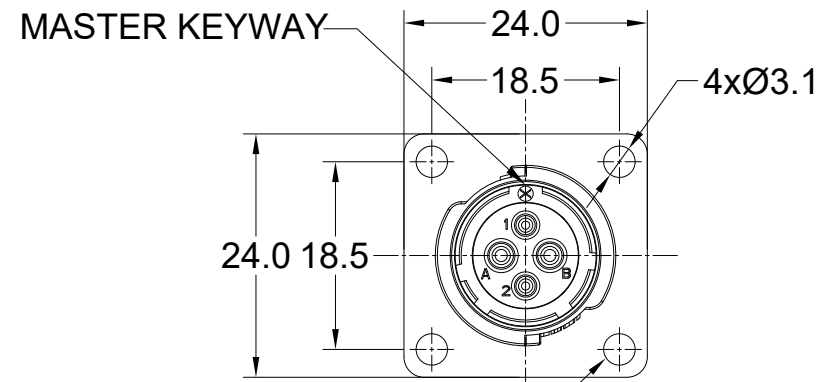


REVISIONS

REV	ECO	DESCRIPTION	DATE	BY	APPR
A1	--	FIRST RELEASED	NOV-23-2021	BLINK	TOMMY
A2	--	VIEW ERROR CORRECTION	JAN-30-2023	JUN	TOMMY
A3	--	ADD IP68	APR-26-2023	JUN	TOMMY
A4	--	UPDATED SUITABLE CONTACT PAGE	MAY-16-2023	RO	RO



TIGHTEN SCREW M2.5;  
(RECOMMENDED TORQUE:0.3~0.4Nm)

NOTES: (UNLESS OTHERWISE SPECIFIED)

1. MATERIAL:

- SHELL: THERMOPLASTIC, BLACK, UL94 V-0.
- INSERT: THERMOPLASTIC, BLACK, UL94 V-0.
- O-RING: SILICONE RUBBER.
- END CAP: THERMOPLASTIC, BLACK, UL94 V-0.
- PLASTIC RING:THERMOPLASTIC, BLACK, UL94 V-0.
- WIRE SEAL: SILICONE RUBBER, RED.

2. SPECIFICATIONS:

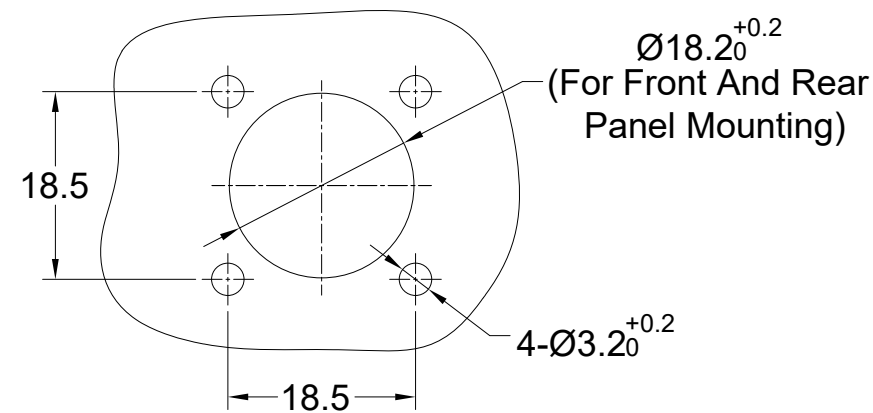
- 2.1 RATED CURRENT: SEE TABLE1.
- 2.2 RATED VOLTAGE: SEE TABLE1.
- 2.3 OPERATING TEMPERATURE: -40°C~125°C.
- 2.4 DIELECTRIC WITHSTANDING VOLTAGE: SEE TABLE1.
- 2.5 INSULATION RESISTANCE: 5000 MEGOHMS MIN.
- 2.6 IP--CLASS: IP67 ,IP68 AND IP69K IN MATED CONDITION.
- 2.7 MATING CYCLES DURABILITY: 500 CYCLES MIN.
- 2.8 RoHS COMPLIANT.

3. SUITABLE CONTACTS : SEE TABLE1.

4. ALL DIMENSIONS ARE FOR REFERENCE USE ONLY.

5. CONTACT SIZE AND REAR SEAL WIRE RANGE :

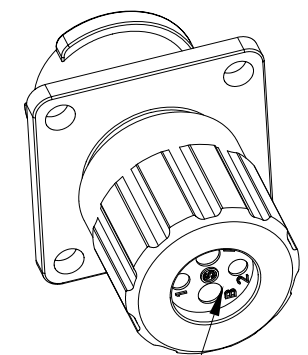
CONTACT SIZE	MIN. INSUL O.D.	MAX. INSUL O.D.	WIRE RANGE
16#	Ø2.0mm	Ø3.2mm	14 - 24AWG
20#	Ø1.4mm	Ø2.1mm	20 - 30AWG



RECOMMENDED PANEL MOUNTING HOLE

RECOMMENDED PANEL THICKNESS 5.0MM MAX

SEALING PLUGS CAN BE PURCHASED SEPARATELY



QUANTITY	PART NUMBER	DESCRIPTION	ITEM
<b>MATERIALS LIST</b>			
UNLESS OTHERWISE SPECIFIED 1) All dimensions are in metric(mm). 2) Tolerances are as follows: 1 PL DEC ±0.30 2 PL DEC ±0.15 3 PL DEC ±0.08 3) Note reference = $\triangle$ X		SIGNATURES      DATE DRAWN: JUN      APR-26-2023 CHECKED: JOE      APR-28-2023 ENGINEER: APPROVAL: TOMMY      MAY-02-2023	
MATERIAL SPECIFICATIONS:		CUSTOMER:	
PROCESS SPECIFICATIONS:		THIS DRAWING IS SUPPLIED FOR INFORMATION ONLY. DESIGN FEATURES, SPECIFICATIONS AND PERFORMANCE DATA SHOWN HEREON ARE THE PROPERTY OF THE AMPHENOL CORPORATION. NO RIGHTS OF REPRODUCTION ARE IMPLIED. ALL DIMENSIONS ARE SUBJECT TO NORMAL MANUFACTURING VARIATIONS.	
NEXT ASSY:		SCALE: NONE	
		SHEET 1 OF 3	

**Amphenol**

Sine Systems - www.amphenol-sine.com  
44724 Morley Drive  
Clinton Township, MI 48036

EcoMate Aquarius,RECEPTACLE, SQUARE FLANGE,  
xx POSITION, FEMALE,SHELL SIZE 10,END CAP

SIZE: B C-      DWG NO: FLS010xxxSHEC03      REVISION: A4

TITLE: EcoMate Aquarius RECEPTACLE, SQUARE FLANGE, xx POSITION, FEMALE, SHELL SIZE 10, END CAP  
DWG NO.: FLS010xxxSHEC03  
REV: A4  
SH: 1  
OF: 1

TABLE 1:

PART NUMBER	FLS010x4SHEC03	FLS010x2SHEC03	FLS010x6SHEC03
FEMALE INSERT ARRANGEMENT FRONT VIEW			
FEMALE INSERT ARRANGEMENT REAR VIEW			
SUITABLE CONTACTS	4 x Size 16 (1.5mm <sup>2</sup> )	3 x Size 16 (1.5mm <sup>2</sup> ) 3 x Size 20 (0.5mm <sup>2</sup> )	6 x Size 20 (0.5mm <sup>2</sup> )
RATED CURRENT	13A	(16#)13A (20#)7.5A-MACHINED CONT. (20#)5A-STAMPED CONT.	7.5A-MACHINED CONT. 5A-STAMPED CONT.
RATED VOLTAGE	500V AC/DC	500V AC/DC	250V AC/DC
DIELECTRIC WITHSTANDING VOLTAGE	2000V AC	2000V AC	1500V AC

ORDERING INFORMATION:

FLS010xxxSHEC03

PROTECTION KEY:(SEE TABLE 2):  
 N KEY(STANADRD VERSION)  
 W KEY  
 X KEY  
 Y KEY  
 Z KEY

STANDS FOR INSERT ARRANGEMENT:  
 2 - 4(2+2) CORES.  
 4 - 4 CORES.  
 6 - 6 CORES.

REVISIONS					
REV	ECO	DESCRIPTION	DATE	BY	APPR
A1	--	FIRST RELEASED	NOV-23-2021	BLINK	TOMMY
A2	--	VIEW ERROR CORRECTION	JAN-30-2023	JUN	TOMMY
A3	--	ADD IP68	APR-26-2023	JUN	TOMMY
A4	--	UPDATED SUITABLE CONTACT PAGE	MAY-16-2023	RO	RO

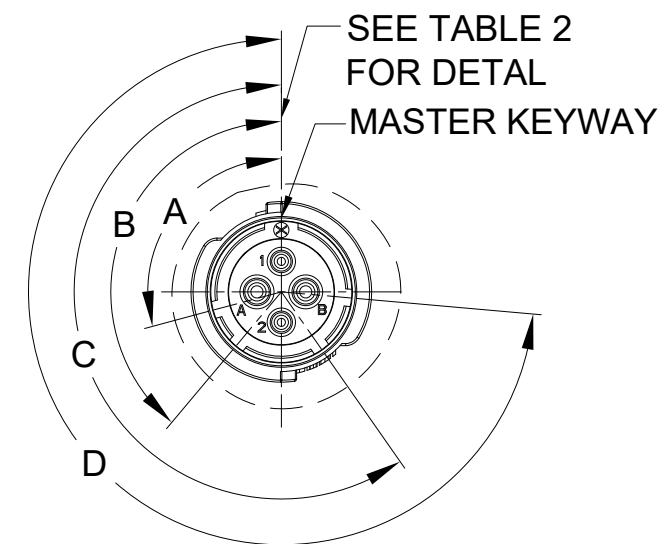


TABLE 2:

KEY POS	A	B	C	D
N	105°	140°	215°	265°
W	45°	140°	215°	265°
X	105°	160°	215°	265°
Y	105°	140°	225°	265°
Z	105°	140°	215°	295°

QUANTITY	PART NUMBER	DESCRIPTION	ITEM
<b>MATERIALS LIST</b>			
UNLESS OTHERWISE SPECIFIED 1) All dimensions are in metric(mm). 2) Tolerances are as follows: 1 PL DEC ±0.30 2 PL DEC ±0.15 3 PL DEC ±0.08 3) Note reference =		SIGNATURES      DATE DRAWN: JUN      APR-26-2023 CHECKED: JOE      APR-28-2023 ENGINEER: APPROVAL: TOMMY      MAY-02-2023	
MATERIAL SPECIFICATIONS:		CUSTOMER:	
PROCESS SPECIFICATIONS:		THIS DRAWING IS SUPPLIED FOR INFORMATION ONLY. DESIGN FEATURES, SPECIFICATIONS AND PERFORMANCE DATA SHOWN HEREON ARE THE PROPERTY OF THE AMPHENOL CORPORATION. NO RIGHTS OF REPRODUCTION ARE IMPLIED. ALL DIMENSIONS ARE SUBJECT TO NORMAL MANUFACTURING VARIATIONS.	
NEXT ASSY:		SCALE: NONE	
		<div style="text-align: center;"> <p>Sine Systems - www.amphenol-sine.com                      44724 Morley Drive                      Clinton Township, MI 48036</p> </div>	
		EcoMate Aquarius,RECEPTACLE, SQUARE FLANGE, xx POSITION, FEMALE,SHELL SIZE 10, END CAP	
		SIZE: <b>B</b> TYPE: <b>C-</b> DWG NO.: <b>FLS010xxxSHEC03</b> REVISION: <b>A4</b>	SHEET <b>2</b> OF <b>3</b>

TITLE: EcoMate Aquarius,RECEPTACLE, SQUARE FLANGE, xx POSITION, FEMALE,SHELL SIZE 10, END CAP

DWG NO.:

FLS010xxxSHEC03

REV: A4

SH: 1

OF: 1

# ecomate® RM/RSSM/Aquarius™ - Contact Size 20 Options

Machined, Crimp Contacts				
Part Number		Contact Size (AWG)	Wire Range (mm²)	Plating
Male	Female			
MP20W23F	MS20W23F	22-20AWG	0.34-0.50 mm²	Gold Flash
MP20W23G5	MS20W23G5	22-20AWG	0.34-0.50 mm²	Gold 5µ"
MP20W23G10	MS20W23G10	22-20AWG	0.34-0.50 mm²	Gold 10µ"
MP20W23G15	MS20W23G15	22-20AWG	0.34-0.50 mm²	Gold 15µ"
MP20W23G30	MS20W23G30	22-20AWG	0.34-0.50 mm²	Gold 30µ"
MP24W23F	MS24W23F	26-24AWG	0.14-0.25 mm²	Gold Flash
MP24W23G5	MS24W23G5	26-24AWG	0.14-0.25 mm²	Gold 5µ"
MP24W23G10	MS24W23G10	26-24AWG	0.14-0.25 mm²	Gold 10µ"
MP24W23G15	MS24W23G15	26-24AWG	0.14-0.25 mm²	Gold 15µ"
MP24W23G30	MS24W23G30	26-24AWG	0.14-0.25 mm²	Gold 30µ"
MP28W23F	MS28W23F	30-28AWG	0.05-0.08 mm²	Gold Flash
MP28W23G5	MS28W23G5	30-28AWG	0.05-0.08 mm²	Gold 5µ"
MP28W23G10	MS28W23G10	30-28AWG	0.05-0.08 mm²	Gold 10µ"
MP28W23G15	MS28W23G15	30-28AWG	0.05-0.08 mm²	Gold 15µ"
MP28W23G30	MS28W23G30	30-28AWG	0.05-0.08 mm²	Gold 30µ"

Stamped & Formed, Crimp Contacts				
Part Number		Contact Size (AWG)	Wire Range (mm²)	Plating
Male	Female			
SP20W2F	SS20W2F	22-20AWG	0.34-0.50 mm²	Gold Flash
SP20W2G5	SS20W2G5	22-20AWG	0.34-0.50 mm²	Gold 5µ"
SP20W2G10	SS20W2G10	22-20AWG	0.34-0.50 mm²	Gold 10µ"
SP20W2G15	SS20W2G15	22-20AWG	0.34-0.50 mm²	Gold 15µ"
SP20W2G30	SS20W2G30	22-20AWG	0.34-0.50 mm²	Gold 30µ"
SP24W2F	SS24W2F	26-24AWG	0.14-0.25 mm²	Gold Flash
SP24W2G5	SS24W2G5	26-24AWG	0.14-0.25 mm²	Gold 5µ"
SP24W2G10	SS24W2G10	26-24AWG	0.14-0.25 mm²	Gold 10µ"
SP24W2G15	SS24W2G15	26-24AWG	0.14-0.25 mm²	Gold 15µ"
SP24W2G30	SS24W2G30	26-24AWG	0.14-0.25 mm²	Gold 30µ"
SP28W2F	SS28W2F	30-28AWG	0.05-0.08 mm²	Gold Flash
SP28W2G5	SS28W2G5	30-28AWG	0.05-0.08 mm²	Gold 5µ"
SP28W2G10	SS28W2G10	30-28AWG	0.05-0.08 mm²	Gold 10µ"
SP28W2G15	SS28W2G15	30-28AWG	0.05-0.08 mm²	Gold 15µ"
SP28W2G30	SS28W2G30	30-28AWG	0.05-0.08 mm²	Gold 30µ"

Machined, Tooling	
Part Number	Description
QXRT20	Contact Extraction Tool, #20 (Ø 1.0) Contact
MFY-3959	Hand Crimp Tool for Machined Contacts
MFY-3960	Pneumatic Crimp Tool for Machined Contact

Stamped & Formed, Tooling	
Part Number	Description
QXRT20	Contact Extraction Tool, #20 (Ø 1.0) Contact
MFY-3958	Hand Tool, Stamped & Formed Contact, Size 20, 20-28AWG
MFY-3957	Crimp Die for Stamped & Formed Contact

Plating Options, All	
Symbol	Plating
T	Tin Plated (for Stamped & Formed Contacts)
S	Silver Plated 5Um (for Machined Contacts)
F	Gold Plated
G5	Gold Plated (Thickness 5µ")
G10	Gold Plated (Thickness 10µ")
G15	Gold Plated (Thickness 15µ")
G30	Gold Plated (Thickness 30µ")

Misc Tooling, All	
Part Number	Description
CA-4020-59	Sealing Plug, Size 16 & 20

Standard Quantity Order Options	
Machined	Bulk Package, 500 Pieces
Stamped & Formed	Reel, 3000 Pieces