

F2780Y001L-001



1. Features :

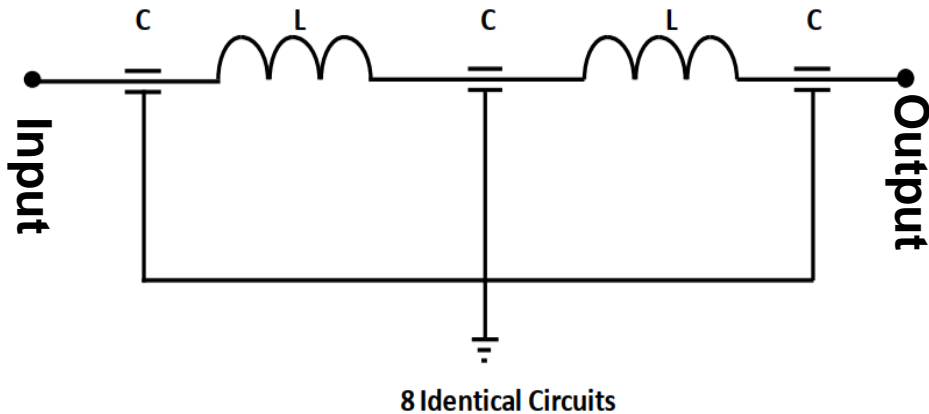
- CAT6a filter provides clean signal and data into Shielded rooms or MRI rooms through RJ45 Connector.
 The filters provide: 50dB attenuation from 30MHz to 70MHz.
 100dB attenuation from 100MHz to 1GHz.
 120dB attenuation from 1GHz to 10GHz.
- Voltage Rating: 100VDC
- Hi-Pot: Line to Ground: 200VDC for 2 sec
- Ambient Temperature Range: -25°C To +85°C
- Filter components are encapsulated in a plated metal enclosure
- The filters comply with UL and cUL construction requirements



2. Electrical Characteristics :

ITG Part Number	Operating Current (A) at 60°C	Output terminal
F2780Y001L-001	1.5	RJ45 Plug

3. Schematic:



F2780Y001L-001



4. Mechanical Dimensions in mm, ±2mm:

ITG Part Number	L	W	H
F2780Y001L-001	200.0	70.0	50.0

