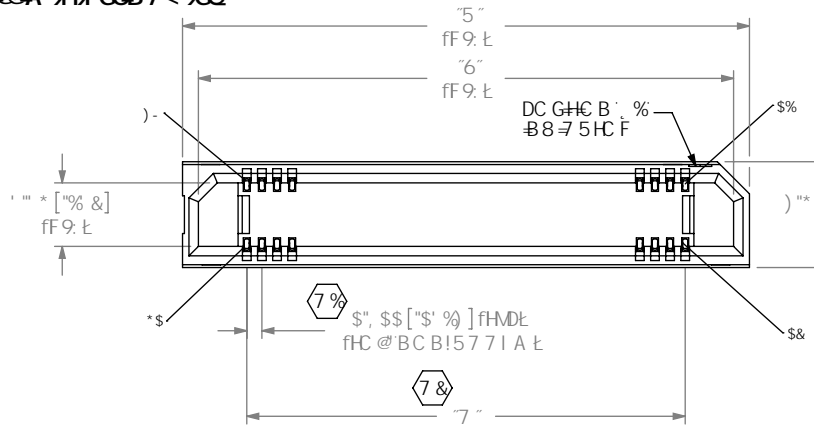


F9J GCB @

89G B98 / 8A 9BGC B98
B'A @A 9HFGB7 < 9CQ

8C B'CH
G7 5 @: FCA
Hk GDF B'H



9F: , !LLL!LL "L!L!8J!LLL

BC C: DC GHC BG
FD9F CK L

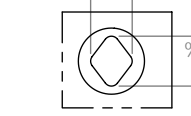
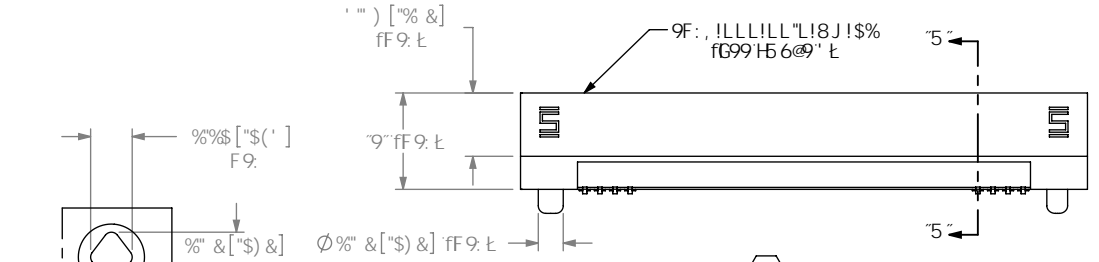
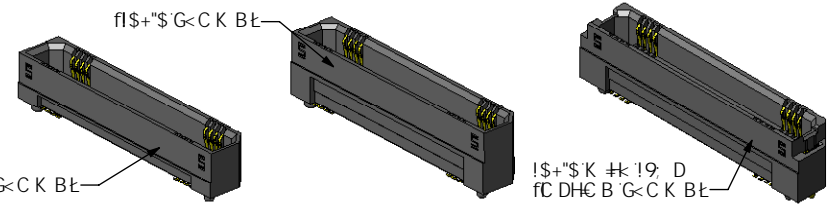
C DHC B
!?: DC @M5A -89: @A D58
!H: H5 D9/ F99@
"FBC H5J 5 @6@9 B %\$\$ DC G

!\$) Z!\$%Z!\$%Z!\$% Z!\$&Z!\$& Z!\$& Z!
!\$ Z!H!\$) Z!\$ (\$Z!(-Z!\$) Z!\$*Z
!\$+Z!\$+ Z!H!\$

@58 G'M@9
"!!\$) "\$1) a a
"!!\$+"\$1 +a a

D@HB: GD97 = 7 5HC B
!@ @ < HG9@7 HJ 9: C @ #A 5H@HB
"!! G9 7 !&@%LL "L!@
!G G9@7 HJ 9: C @ #A 5H@HB
"!! G9 7 !&@%LL "L!@

FCK GD97 = 7 5HC B
!BJ . 8C! 6@J 9FH7 5 @
H ! 1 BC HF9@5 G98 : CF DFC 81 7 HC B



89H5 @fB fi
G7 5 @) : %

TABLE 1

No. OF POS.	
-005, -010, -011, -013, -020, -025, -023 -030	0.10 [.004]
**-.035, -040, -049, -050, -060	0.12 [.005]
-070, -075, **-.100	0.15 [.006]

f! 1 BC HF9@5 G98 : CF DFC 81 7 HC BL

TABLE 2 (REF)

STACK HEIGHT

ERF8 LEAD STYLE	ERM8 LEAD STYLE		
	-02.0	-05.0	**-.09.0
-05.0	7.0MM	10.0MM	14.0MM
-07.0	9.0MM	12.0MM	16.0MM

f! 1 BC HF9@5 G98 : CF DFC 81 7 HC BL

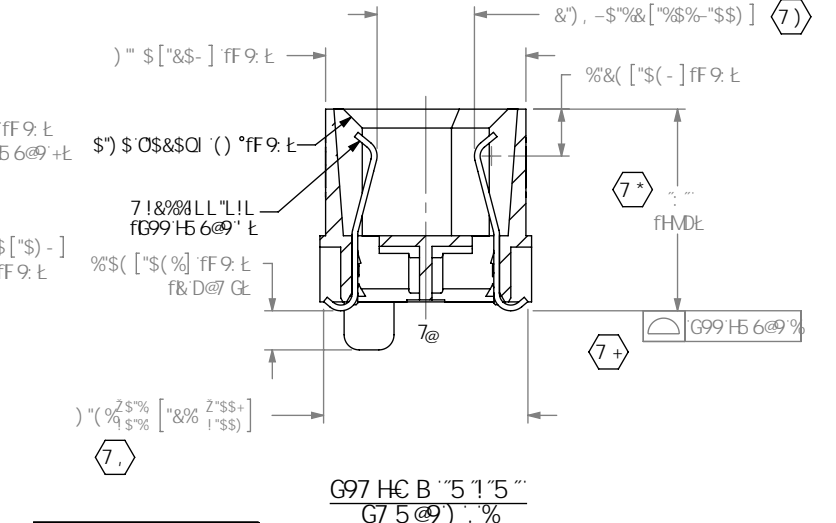
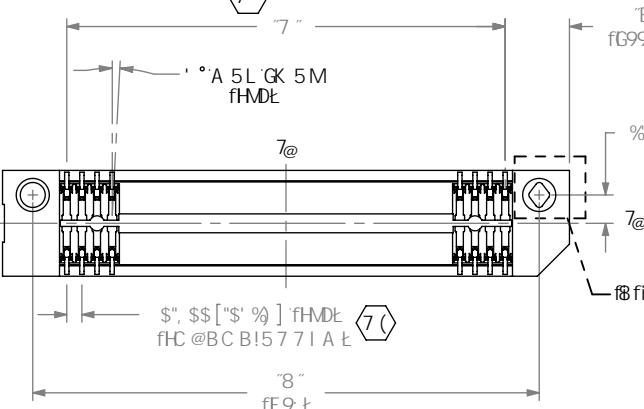


TABLE 7

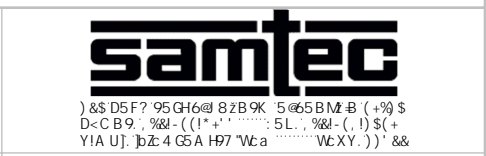
OPTION	"N"
NONE	3.40 [.134]
-L	4.15 [.163]

BC HPG

% (7) F9DF9G9BHG5 7 F#7 5 @8A 9BGC B"
&* 6! FF 5 @C K 5B7 9: \$'\$, OS\$% OA 5L"
' "A -B A I A DI G<C I H: CF 7 9: &*&B O) @S"Q
("D5 FIGHC 69D5 7 25: 98 -B HF5M@1 B @GG
"!!H C DHC B -G GD97 = 98"
)" C DHC B C B @M5J 5 @6@9 C B 1\$) "\$ @58 G'M@9"
" " C DHC B C B @M5J 5 @6@9 C B 1\$+"\$ @58 G'M@9Z5 @C !@/ !6@
" " C DHC B GBC H5J 5 @6@9 B 7 CA 6B5HC B K #k !9: DC DHC B"

I B @GG C H 9FK @9 GD97 = 98 2
8 A 9B GC BG 5 F 9 B
A @A 9HF GB 7 < 9CQ
HC @F 5B 7 9G 5 F 9
897 A 5 @G
L'L : +\$ " OS\$O : &*" &
L'LL : +\$ " OS\$O : O
L'LLL : +\$ " OS\$S &SQ

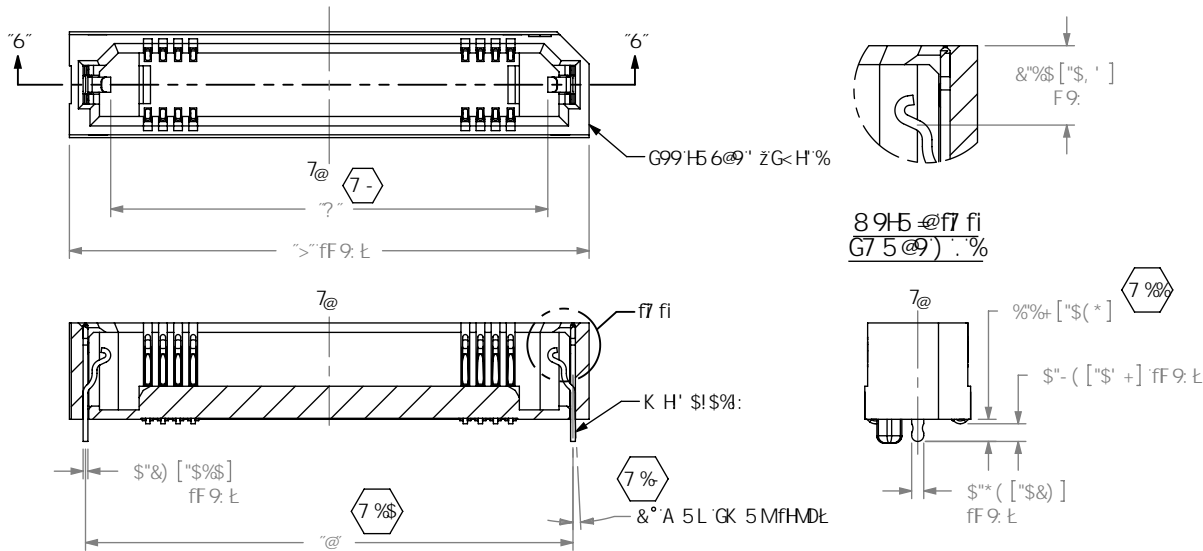
DFC DF 9H5 FMBC H9
H: G8C 71A 9B H7 C B H5 B G B: CFA 5HC B
7 C B: 89B H5 @588 DFC DF 9H5 FMC
G5A H7 2 B 7 5 B 8 G: 5 @B C H6 9 F 90FC 81 7 98
C F H5 B G 9 F 98 H C C H 9 F B C 71 A 9 B H G C F
8 47 @C 98 H C C H 9 F G C F I 98 : C F 5 B M
DI FDC @9 C H 9 F H 5 B H 5 H K < 7 < H K 5 G
C 6 5 8 98 K #K C I H K 9 9 L DF 9 G 98 K F H 98
7 C B 98 H C: G5A H7 2 B 7



A 5HF 5 @ 8C B'CH G7 5 @9 8F5 K B: G 99HG 7 5 @9: %
-BG @HC F: @ D27 C @ F: 6 @ 7 7
7 C B H 5 7 H / @ H 7 < 9 G 6 Y 7 I

89G7 F @HC B:
\$, A A '98: 9 F 5 H 7 GC 7 ? 9 H 5 GG 9 A 6 @M
8K : "BC"
9F: , !LLL!LL "L!L!8J!LLL

CONTROL PLAN CRITICAL INSPECTION TABLE			
OPTION	ASSEMBLY OPERATION	START-UP INSPECTION CODE A	IN-PROCESS INSPECTION CODE B
ANY	CUT COMBS		C16,C17
NONE	FILL C-211-XX.X-X	C1,C2,C3,C4,C8,C18	C5,C6
-L & -SL	FILL WT-30-01-X & C-211-XX.X-X	C1,C2,C3,C4,C8,C9,C10,C12,C18,C19	C5,C6,C11
-EGP	FILL WT-30-02-X & C-211-XX.X-X	C1,C2,C3,C4,C8,C10,C12,C18,C19	C5,C6,C11
-K ONLY	APPLY KAPTON	C1,C2,C3,C4,C13,C14	
-L, -SL, -EGP w/ -K	APPLY KAPTON	C1,C2,C3,C4,C10,C12,C14,C15	C11

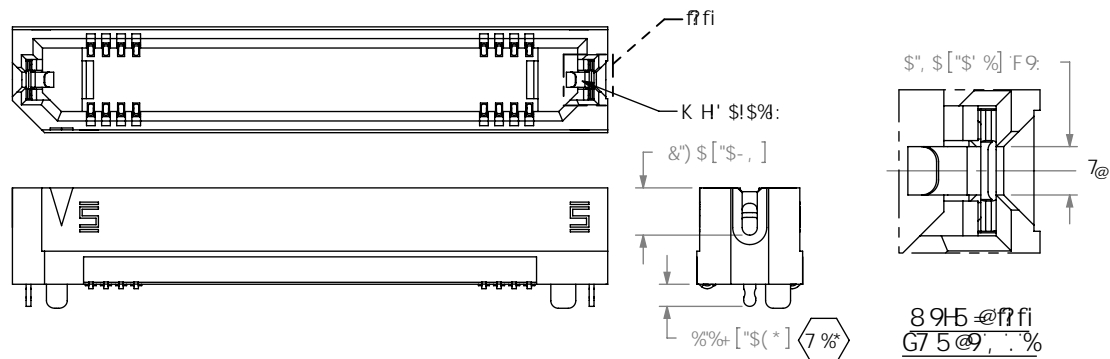
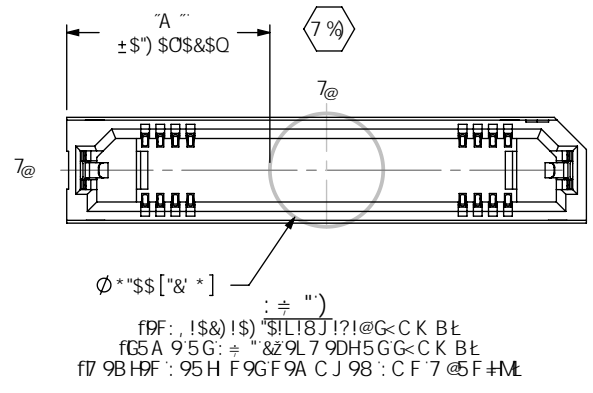


G97 HC B "6"1"6"
G7 5 @) &)"

fDF: , !\$&!\$) "L!8J!@G<CK B<
fG5A 95G: ÷ "9L 7 9DH5GG<CK B<
fB J 5 @5 6 @) C B !\$) "\$ @5 8 GH @) C B @M
f7 9BH@F: 95H F9GF9A CJ 98: CF 7 @5F #M

TABLE 6				
POSITION	"J"	"K"	"L"	"M"
-005	11.50 [.453]	7.13 [.281]	9.8 [.386]	2.75 [.108]
-010	15.50 [.610]	11.13 [.438]	13.8 [.543]	4.75 [.187]
-011	16.30 [.642]	11.93 [.470]	14.6 [.575]	5.15 [.203]
-013	17.90 [.705]	13.53 [.533]	16.2 [.638]	5.95 [.234]
-020	23.50 [.925]	19.13 [.753]	21.8 [.858]	8.75 [.344]
-023	25.90 [1.020]	21.53 [.848]	24.2 [.953]	11.15 [.439]
-025	27.50 [1.083]	23.13 [.911]	25.8 [1.016]	10.75 [.423]
-030	31.50 [1.240]	27.13 [1.068]	29.8 [1.173]	12.75 [.502]
**035	35.50 [1.398]	31.13 [1.226]	33.8 [1.330]	14.75 [.581]
-040	39.50 [1.555]	35.13 [1.383]	37.8 [1.488]	16.75 [.659]
-049	46.70 [1.839]	42.33 [1.667]	45.0 [1.772]	20.35 [.801]
-050	47.50 [1.870]	43.13 [1.698]	45.8 [1.803]	20.75 [.817]
-060	55.50 [2.185]	51.13 [2.013]	53.8 [2.118]	24.75 [.974]
-070	63.50 [2.500]	59.13 [2.328]	61.8 [2.433]	28.75 [1.132]
-075	67.50 [2.657]	63.13 [2.485]	65.8 [2.591]	30.75 [1.211]
**100	87.50 [3.445]	83.13 [3.273]	85.8 [3.378]	40.75 [1.604]

fH 1 BC HF 9 @5 G98 : CF DFC 81 7 HC B<



fDF: , !\$' \$!\$) "L!G<CK B<
fG5A 95G9F: , !\$' \$!\$) "L!@9L 7 9DH5GG<CK B<
fB J 5 @5 6 @) C B !\$) "\$ @5 8 GH @) C B @M
f7 9BH@F: 95H F9GF9A CJ 98: CF 7 @5F #M
H 1 BC HF 9 @5 G98 : CF DFC 81 7 HC B

DFC DF 9H5 FMBC H@
H: 6BC 71A 9BH7 CB16 BG B: CFA 5HC B
7 C B: @9H5 @5B8 DFC DF 9H5 FMBC
GSA H97 2 87 5B8 G: 5 @) BC H69 F9DFC 81 7 98
CF H5BG 9F98 HC CH: 9F 8C 71A 9BH6 CF
8 47 @) 98 HC CH: 9F GCF 1 98 : CF 5BM
DI DFC @) CH: 9F H: 5B H: 5HK < 7 < H: 5G
C 6H5 B 98 K H: C 1 H: 9 9L DF 9G98 K F #H8
7 C B 98 HC: GSA H97 2 87 "

8C B<CH G7 5 @) 8F5K B<

G: 99H7 5 @) & %



89G7 F @) HC B.
9F: , !LL!LL "L!L!8J!LLL
6M ?BCK @3B - #&* #&\$) G<99H" C: "