



- 1
- 2
- 3
- 4
- 5
- 6
- 7
- 8
- 9
- 10
- 11
- 12
- 13
- 14
- 15
- 16
- 17
- 18

**MATERIAL**

Glass-fibre reinforced polyamide based (PA) technopolymer, white colour similar to RAL 9002, matte finish.

**STANDARD EXECUTION**

Snap-in assembly (see Assembly Instructions).

**FEATURES AND APPLICATIONS**

ERB-PF-CLEAN bi-directional flush pull handles are suitable to open and close sliding doors. The ergonomics of the cavity offers a safe and comfortable grip.

ERB-PF-CLEAN in white colour is suitable for applications on medical and hospital equipment and food processing machines.

**TECHNICAL DATA**

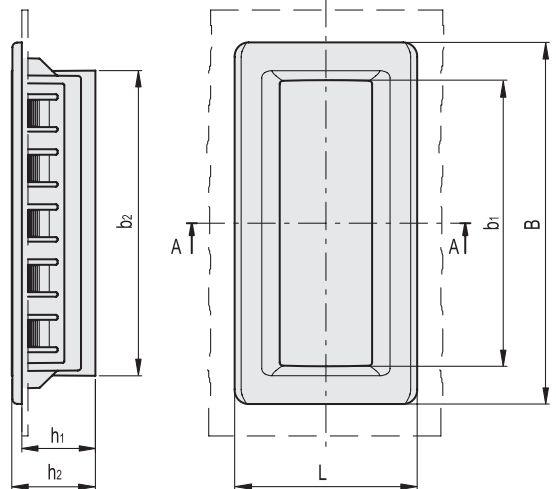
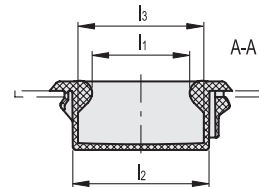
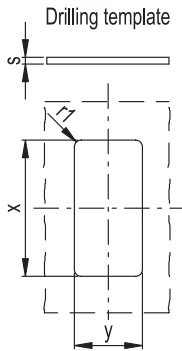
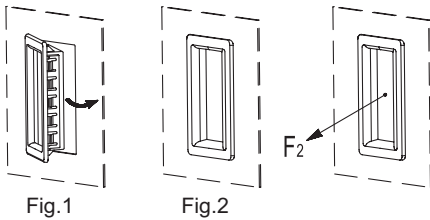
The pull out resistance values (F<sub>2</sub>) reported in the table are the result of laboratory tests carried out with the handle assembled on a panel with a thickness of 1.5 mm, stiffened for testing purposes.

**ASSEMBLY INSTRUCTIONS**

1. Drill the handle housing according to the template dimensions.
2. Remove all drilling burrs before fitting the handle.
3. Fit the side of the handle with fixed toothings into the housing (Fig. 1).
4. Press onto the opposite side (elastic toothings) until the handle is completely snapped in (Fig. 2).



ELESA Original design



S	X	Y
0,7 - 1	105,3 +0,2	51,5 + 0,2
>1 - 1,5	105,3 +0,2	51,7 + 0,2
>1,5 - 2,2	105,3 +0,2	52,0 + 0,2

Conversion Table	
1 mm = 0.039 inch	
B	
mm	inch
115	4.53



Code	Description	B	L	h1	h2	b1	b2	l1	l2	l3	F <sub>2</sub> [N]	⚖️
151301	ERB.115-PF-CLEAN	115	58	19	22	91	94	31	43.5	40	600	42