

- 1
- 2
- 3
- 4
- 5
- 6
- 7
- 8
- 9
- 10
- 11
- 12
- 13
- 14
- 15
- 16
- 17
- 18

MATERIAL

Glass-fibre reinforced polyamide based (PA) technopolymer, RAL 5005 blue colour, matte finish.

Produced from FDA compliant raw material (FDA CFR.21 and EU 10/2011).

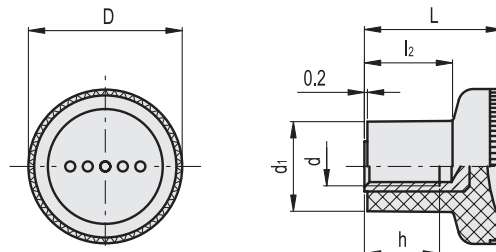
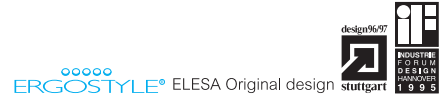
STANDARD EXECUTION

AlSI 303 stainless steel boss, threaded blind hole.

FEATURES AND APPLICATIONS

The RAL 5005 blue colour is easily visible in case of accidental food contamination.

Particularly suitable for applications in the food and pharmaceutical industries.



Conversion Table	
1 mm = 0.039 inch	
D	
mm	inch
21	0.83
31	1.22

Code	Description	D	L	d6H	d1	h	l2	⚖
194416	EKK.21-SST M5-VD	21	18	M5	12.5	10	10.5	7
194436	EKK.31-SST M8-VD	31	27	M8	18.5	15	17	20