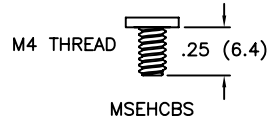
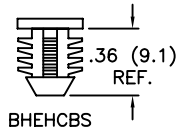


THESE TWO BASES AVAILABLE BY SPECIAL ORDER ONLY

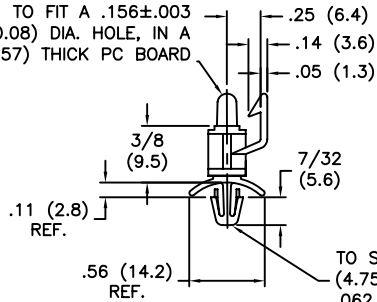
TO PRESS-FIT IN A $.312 \pm .003$
(7.92 ± 0.08) DIA. HOLE, IN A
.25 (6.4) MIN. THICK PANEL



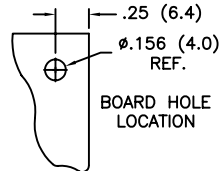
BASE STYLE	HEAD STYLE					
	STANDARD NOSE STANDARD CLIP "C"=.29 (7.5)	-8 STANDARD NOSE SHORT CLIP "C"=.24 (6.1)	-6 SHORT NOSE SHORT CLIP "C"=.24 (6.1)	-7 SHORT NOSE STANDARD CLIP "C"=.29 (7.5)	-9 NO NOSE SHORT CLIP "C"=.24 (6.1)	-10 NO NOSE STANDARD CLIP "C"=.29 (7.5)
<p>TO SNAP-LOCK IN A .187±.003 (4.75±0.08) DIA. HOLE IN A .062 (1.57) NOM. THK. PANEL.</p>	EHCBS-A-01 EHCBS-A-19	EHCBS-8-A-01 EHCBS-8-A-19	EHCBS-6-A-01 EHCBS-6-A-19	EHCBS-7-A-01 EHCBS-7-A-19	EHCBS-9-A-01 EHCBS-9-A-19	EHCBS-10-A-01 EHCBS-10-A-19
<p>FOR #6 (M3.5), SELF TAPPING SCREW.</p>	TEHCBS-A-01 TEHCBS-A-19	TEHCBS-8-A-01 TEHCBS-8-A-19	TEHCBS-6-A-01 TEHCBS-6-A-19	TEHCBS-7-A-01 TEHCBS-7-A-19	TEHCBS-9-A-01 TEHCBS-9-A-19	TEHCBS-10-A-01 TEHCBS-10-A-19

SELECT BASE STYLE FROM LEFT TABLE COLUMN AND HEAD STYLE FROM THE TOP OF THE TABLE. WHERE THE COLUMN & ROWS INTERSECT IS THE CORRESPONDING PART NO.

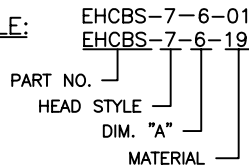
TO FIT A $.156 \pm .003$
(4.00 ± 0.08) DIA. HOLE, IN A
.062 (1.57) THICK PC BOARD



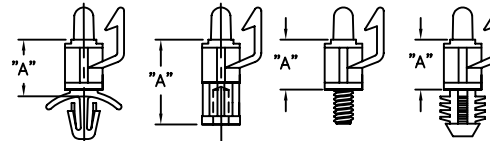
TO SNAP-LOCK IN A $.187 \pm .003$
(4.75 ± 0.08) DIA. HOLE IN A
.062 (1.57) NOM. THK. PANEL



EXAMPLE:



FOR DIMENSION "A" SEE CHART.



DIM. "A"	SIZE
-4*	1/4 (6.4)
-5	5/16 (7.9)
-6	3/8 (9.5)
-8	1/2 (12.7)
-10	5/8 (15.9)
-12	3/4 (19.1)
-14	7/8 (22.2)
-16	1 (25.4)

NOTES:

- MATERIAL: NYLON 6/6 (RMS-01),
FLAME RETARDANT: NYLON (RMS-19),
- COLOR: NATURAL.

*ONLY TEHCBS-4-01 OR "-19" AVAILABLE IN 1/4 (6.4) SIZE

TITLE: EDGE-HOLDING CIRCUIT BOARD SUPPORTS				DWG IN IN (MM)	FINAL	PRINT TYPE
TOLERANCES UNLESS NOTED .XX=±.010 .XXX=±.005 FRAC=±1/64 ANG=±1°	FILE # EHCBS	DWN: S.M.	APP:	IN	FINAL	CA
RE: RICHCO, INC.	MAT'L: SEE NOTES	DT: 12/05/01	DT:	SEE TABLE		
		RICHCO INC. PO BOX 804238, CHICAGO, 60680 (773) 539-4060				

REV	DESCRIPTION	ENGR	DATE
E	SEE ECN #497 FOR CHANGES	SM	10/23/02
-	SEE ENGINEERING FOR REV A-D	-	-