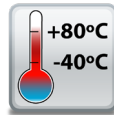


ED-560 Ethernet to Analogue I/O

4 Analogue Outputs

- 4 Analogue Outputs - Selectable as either current or Voltage
- Supports simple ASCII or industry standard Modbus TCP
- 1 Ethernet Port
- -40°C to +80°C / -40°F to +176°F Temperature range



Non conducting polyamide casing with removable numbered terminal blocks for easy wiring



+5 to +30 Volt Power Input enables the device to be run from USB, a vehicle battery or the factory floor



Integral DIN mount and slim design takes up minimal cabinet space

ED-560

Ethernet to Analogue Output

Integrate with popular software packages or use with our free APIs

Easy Wire Removable screw terminal blocks

Supports Modbus TCP or ASCII commands

4 Analogue Output Lines: 12 bit

Serial Expansion Port suitable for ADAM modules

Integral DIN rail clip with earth

Ethernet Port

View from webpage - no software required

-40°C to +80°C / -40°F to +176°F temperature range

IP20 Non-conducting polyamide case with vents



Wide Range Input Power: +5VDC to +30VDC

Connectors

| | |
|-----------------|---|
| Screw Terminals | 3.5mm pitch |
| Wire Thickness | #22 - #14, 0.5mm ² -2.5mm ² |

Power Supply

| | |
|--------------------|---|
| Power Supply input | Unregulated +5V to +30Volts DC, reverse polarity protection |
| Isolation | 1500VRMS Magnetic isolation from Ethernet |

Environmental

| | |
|---------------------------|----------------------------------|
| Operating Temperature | -40°C to +80°C / -40°F to +176°F |
| Storage Temperature | -40°C to +85°C / -40°F to +185°F |
| Ambient Relative Humidity | 5 to 95% (non-condensing) |

Magjack LED Information

| | | |
|-------------------|----------------|------------------------|
| Link/Activity LED | Solid green | Connection established |
| | Flashing Green | Data communication |
| Speed LED | Green | 100Base-Tx |
| | Unlit | 10Base-T |

Ethernet

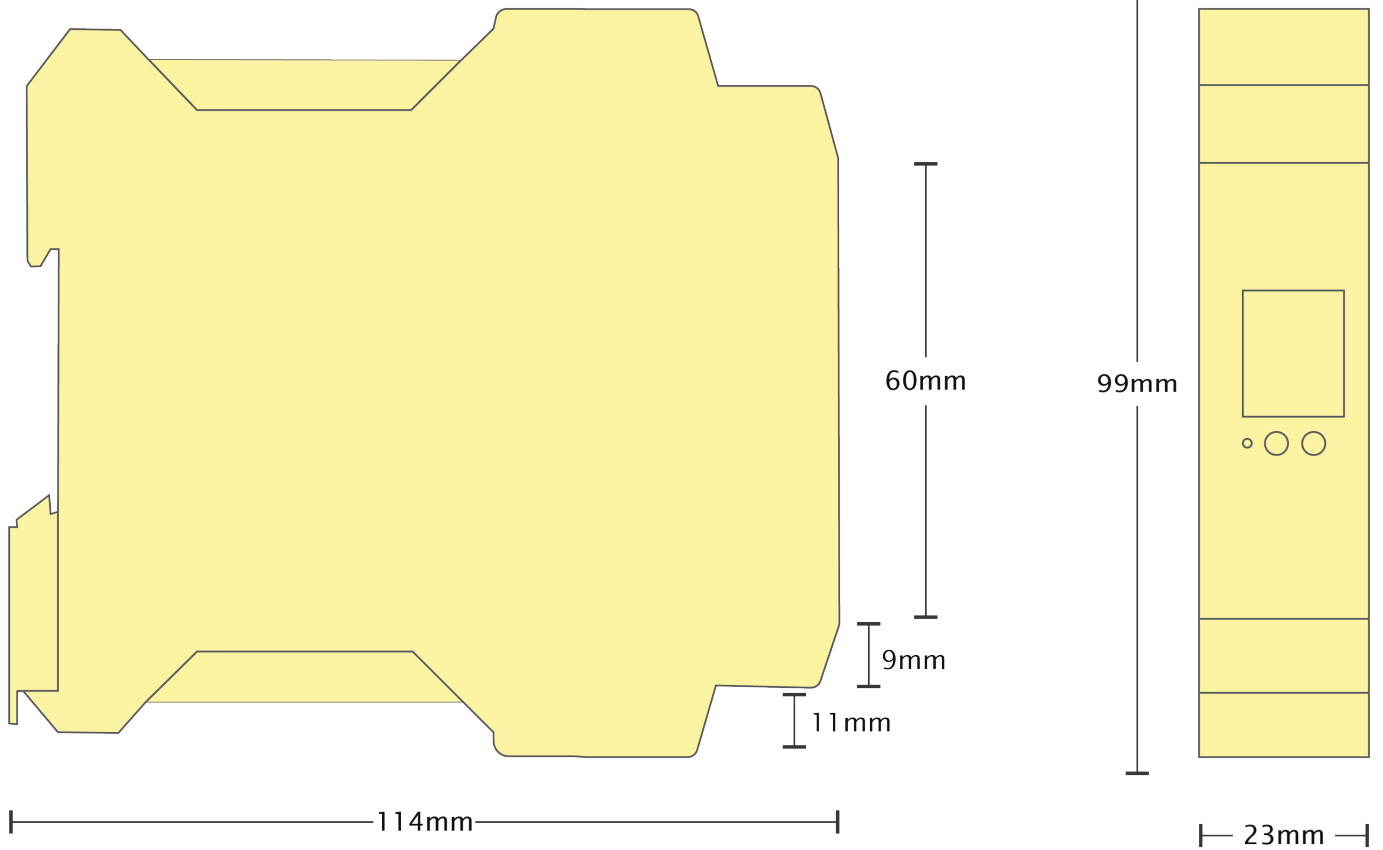
| | |
|---------------|--|
| Ethernet Port | RJ45 jack, 10/100Mhz autosensing, crossover auto sensing (Auto MDIX) |
| Protection | 1,500 Volts Magnetic Isolation On Port |

Housing

| | |
|---------|---|
| Housing | IP-20 rated non-conducting polyamide case |
|---------|---|

ED-560

Ethernet to Analogue Output



Terminal Block Pin Outs

| Terminal Block | Pin 1 | Pin 2 | Pin 3 | Pin 4 | Pin 5 |
|----------------------------|---------|-----------|-----------|-----------|-----------|
| Yellow | AGND | Vout 0 | Vout 1 | lout 0 | lout 1 |
| Grey | SIG GND | RS-485 D- | RS-485 D+ | RS-485 D+ | RS-485 D- |
| Green | AGND | Vout 2 | Vout 3 | lout 2 | lout 3 |
| Black | -V | +VA | +VB | -V | Func GND |
| Power Input +5V to +30V DC | | | | | |

Ethernet Port Pin Outs

| PIN | FUNCTION |
|-----|-----------|
| 1 | RD+ / TD+ |
| 2 | RD- / TD- |
| 3 | TD+ / RD+ |
| 4 | NC |
| 5 | NC |
| 6 | TD- / RD- |
| 7 | NC |
| 8 | NC |

Lifetime Warranty and Support:

We can help with every aspect of your project, from getting you up and running to custom application.

ED-560

Ethernet to Analogue Output

Analogue Channels - 4 Outputs

| | |
|--|--|
| IO Protocols | DCON ASCII over TCP or COM Port; Modbus TCP |
| Description | 4 Analogue Outputs |
| Output Isolation | Yes, Outputs Isolated from Power, Network and Gateway Port |
| Voltage Output Range | 0-10V |
| Current Output Ranges | 0-20mA or 4-20mA |
| Current Output Type | Sink (requires external power source) |
| Output Resolution | 12 bit |
| Watchdog | Sets outputs to predefined values on timeout |
| Max Output Load Current (Voltage Mode) | ±5mA |
| Max Output Load Voltage (Current Mode) | 30V |
| Dropout Voltage (Current Mode) | 2.8V |
| Output Accuracy | 0.1% of FSR @ 25 °C (77 °F) |
| Output Drift (Voltage Mode) | Zero drift less than 30µV/°C, span drift less than 25ppm/°C |
| Output Drift (Current Mode) | Zero drift less than 0.2µA/°C, span drift less than 25ppm/°C |
| Output Slew Rate | Voltage Mode: 170 kV/s, Current Mode: 4.3A/s |
| Output Settling Time | Voltage Mode: 350µs, Current Mode: 4 µs |

Serial Expansion Port - RS485

Half Duplex RS485 port allows connection and control of industry standard NuDAM, eDAM and ADAM modules using ASCII protocols.

Software

OS Compatibility

Brainboxes' software provides a TCP or Serial COM port interface. All software versions and updates available to download from our website.

Microsoft

Legacy COM port drivers for Microsoft OS up to latest Windows 10

Other

TCP and web browser interface for other OSs & Linux, e.g. Android, Raspberry Pi



Boost.IO Manager

Lets you find, install and upgrade devices

Industry Standard Packages

The COM port based driver means devices are compatible with popular packages such as: LabVIEW, MATLAB, Agilent VEE. So you can continue to get value from your existing development and process control system.

Software Platforms

APIs and sample program code for: Microsoft .NET, C#, Visual Basic, C++, JavaScript, PHP, Java, Objective-C, Python and more - www.brainboxes.com



Modbus

Device works as a Modbus TCP server. Modbus TCP can be used on the input and output lines.

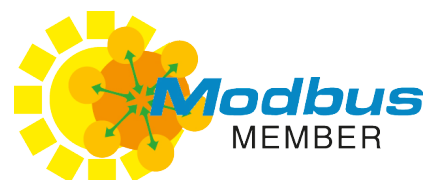
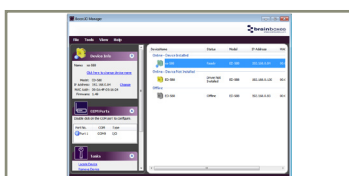
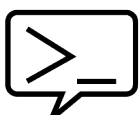
| Examples from Modbus Tables | Modbus access type | Supported Modbus function codes | Logical address | 984 style address | IEC 61131 address |
|-----------------------------|--------------------|---------------------------------|-----------------|-------------------|-------------------|
| Read DI counter values | Holding register | 3 | 0x0000... | 40001... | %MW0... |
| Clear DI counters | Coil | 5, 15 | 0x0200... | 00513 | %M512... |
| Set/read digital outputs | Coil | 1, 5, 15 | 0x0000... | 00001... | %M0... |

ASCII

The ED device's webpage has an interactive ASCII console where any command can be entered and it is immediately executed showing the device's response.

| | |
|-----------|---|
| \$01M | read the name of device address 01 |
| !01ED-588 | device 01 replies that its name is ED-588 |
| \$01F | read firmware version number of device address 01 |
| !012.54 | firmware version of device 01 is 2.54 |

Full command tables can be found in the device manual



ED-560

Ethernet to Analogue Output

Packaging Information

| | |
|---------------------|---|
| Packaging | Microsoft signed drivers & utilities, Quick Start Guide, Device |
| Packaged Weight | 0.197 kg, 6.95 ounces |
| Packaged Dims | 160x135x49 mm, 6.3x5.3x1.9 inches |
| GTIN Universal Code | 837324003505 |

Approvals

| | |
|--------------------|--|
| Industry Approvals | Microsoft Certified Gold Partner, WEEE, RoHS, AEO (C-TPAT), CE, UKCA |
|--------------------|--|

Product Support

| | |
|----------|---|
| Warranty | Lifetime - online registration required |
| Support | Lifetime Web, Email and Phone Support from fully qualified, friendly staff who work in and alongside the Product Development Team |

Additional Information

| | |
|--------------|--|
| OEM option | Available for bulk buy OEM |
| Made In | Manufactured in the UK by Brainboxes Winner 2005 European Electronics Industry Awards 'Manufacturer of the Year' |
| Customisable | Brainboxes operate a 'Perfect Fit Custom Design' policy for volume users. More info:sales@brainboxes.com |



ED Range

Remote I/O products available in a range of formats and specifications

www.brainboxes.com



PW-600

Power supply with connectors for UK, USA, EU and AUS mains socket. 'Tails' are suitable for connecting to screw terminal blocks.



PW-650

Power supply with USB connector and pre-wired screw terminal block. Suitable for use with 5V USB ports.



MK-588

6 coloured PCB connectors. Individually numbered pins; 5 x 3.5mm pitch screw connections with tension sleeve.