



Manage this device with Digi Remote Manager



DIGI EX12

Avoid network outages with primary or backup LTE connectivity; integrate seamlessly with existing infrastructure

Digi EX12 is an affordable, scalable failover solution that enables you to retrofit your infrastructure for cellular network access. With a carrier-certified, embedded LTE Cat 4 cellular modem, equipped with dual SIM slots, Digi EX12 provides uninterrupted primary or backup connectivity. It protects against downtime by automatically switching to a secondary cellular carrier should the primary SIM lose Internet access. This compact, high-performance device is also compatible with any dual-WAN networking appliance and helps you achieve reliable connectivity at any location using your existing equipment.

Couple the Digi EX12 with a dedicated wireline ISP connection to maximize uptime and ensure reliable network availability

for POS systems, ATMs, mobile kiosks, digital signage and more. Deployments are streamlined with installation accessories including an optional Remote Mounting Kit with a disposable battery pack for site survey, mounting bracket and a passive Power-over-Ethernet (PoE) injector for optimizing placement for the best cellular reception.

Reduce the complexity of deploying and managing devices with Digi Remote Manager®, the command center of an intelligent network. At the heart of Digi's cellular solutions, Digi Remote Manager provides centralized control, management, security, edge intelligence and day-to-day network management for hundreds and thousands of distributed devices.

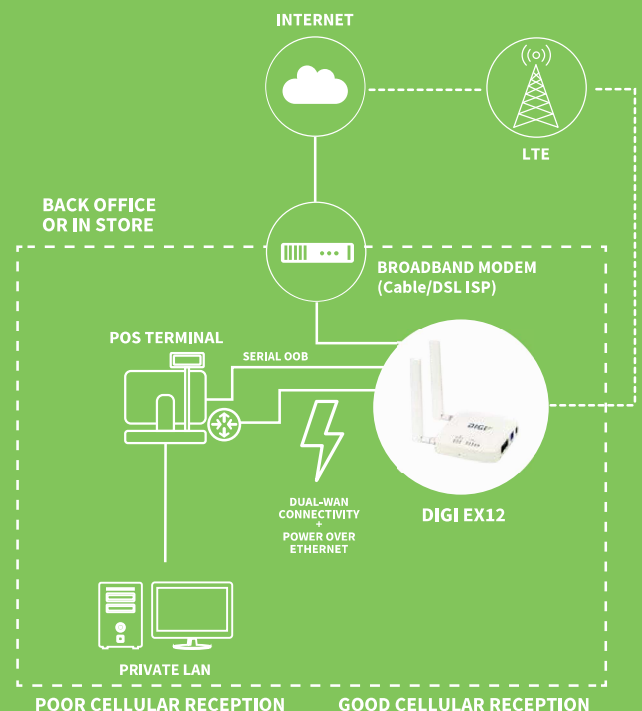
FEATURES AND BENEFITS

- Redundant cellular connectivity with dual SIMs and Digi SureLink®
- Digi TrustFence® for built-in device security, secure encrypted connections, ongoing monitoring and support
- FirstNet Ready™ models for use on public safety networks
- Optional Remote Mounting Kit with bracket, accessories, passive PoE injector and site survey battery pack to identify the best location for optimum cellular reception
- Automatic cellular carrier detection and switching with Carrier Smart Select™
- Digi Remote Manager® software for easy setup, mass configuration and management

RELATED PRODUCTS



APPLICATION EXAMPLE



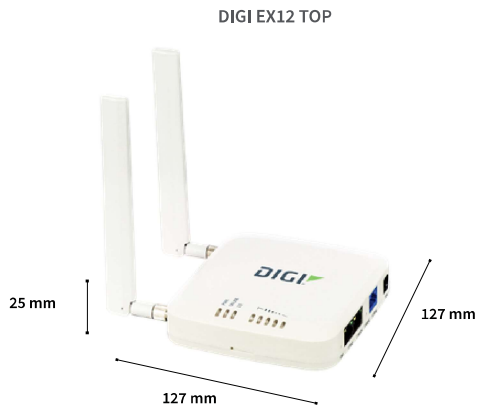
SPECIFICATIONS

DIGI EX12

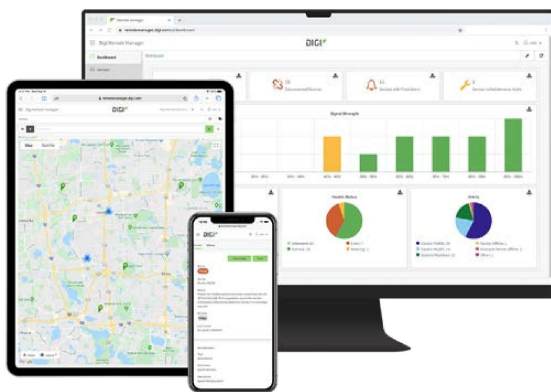
CELLULAR CONNECTIVITY	
CELLULAR BANDS	LTE: B2, B4, B5, B12, B13, B14 (FirstNet®), B66, B71; 3G: B2, B4, B5; Transfer rate (max): 150 Mbps down, 50 Mbps up
CONNECTORS	(2) 50 Ω SMA (center pin: female)
SIM SLOTS	(2) Mini-SIM (2FF); software selectable and hardware switchable
SOFTWARE AND MANAGEMENT	
REMOTE MANAGEMENT	Digi Remote Manager®; SNMP v3 (user installed/managed), encrypted SMS
LOCAL MANAGEMENT	WebUI (HTTP/HTTPS); CLI (SSH, serial port)
PROTOCOLS	RIP, RIPng, OSPFv2, OSPFv3, BGP, Babel, IS-IS
MANAGEMENT/ TROUBLESHOOTING TOOLS	FTP client, SCP; protocol analyzer with PCAP for Wireshark; event logging with syslog and SMTP client; NTP/SNTP
MEMORY	256 MB RAM, 512 MB flash
ETHERNET	
PORTS	(2) RJ-45; 10/100 Mbps (auto-sensing)
SERIAL	
PORTS	(1) RS-232 (RJ-45)
PHYSICAL	
DIMENSIONS (L x W x H)	127 mm x 127 mm x 25 mm (5.0 in x 5.0 in x 1.0 in)
WEIGHT	0.24 kg (8.25 oz)
STATUS LEDs	LAN (link = solid, flashing = act), WAN (link = solid, flashing = act), LTE, 5 signal
ENCLOSURE	Plastic
POWER REQUIREMENTS	
POWER INPUT	18 VDC 1 A
ACCESSORIES	Includes power supply, cables, antennas and optional Remote Mounting Kit: temporary battery, passive PoE injector, mounting bracket and accessories (see part numbers for details); Note: only the Digi-supplied power supply and passive PoE injector are recommended for use with Digi EX12
ENVIRONMENTAL	
OPERATING TEMPERATURE	0° C to 40° C (32° F to 104° F)
RELATIVE HUMIDITY	5% to 95% (non-condensing)
APPROVALS	
CELLULAR	Visit www.digi.com/resources/certifications for latest certifications
PUBLIC SAFETY NETWORKS	FirstNet Ready™
EMISSIONS / IMMUNITY	FCC Part 15, Subpart B, Class B; CE, RCM; CAN ICES-3(B)/NMB-3(B)
WARRANTY	
PRODUCT WARRANTY	3-year*

*Standard 3-year warranty upgradeable to 5 years with purchase of a Digi Remote Manager Premier 5-year subscription applicable to the product purchased only at the time of product purchase and with product registration at that time in Digi Remote Manager.

PRODUCT IMAGES



DIGI REMOTE MANAGER®



Digi Remote Manager® is the technology platform that brings networks to the next level, allowing networks — and the people who manage them — to work smarter. With Digi Remote Manager you can transform a multitude of dispersed IoT devices into a dynamic, intelligent network. Now you can easily deploy, monitor and diagnose thousands of mission-critical devices from a single point of command — on your desktop, tablet or phone. All the while, its software-defined security diligently safeguards your entire Digi ecosystem.

Learn more at www.digi.com/digi-remote-manager

CAPABILITIES

- Activate, monitor and diagnose your mission-critical devices from a single point of command and control
- Schedule key operations — including firmware updates and file management — on a single device or on a group of devices, keeping your network functionality up-to-date and maintaining compliance standards
- Manage edge devices out-of-band via console terminal access
- Keep tabs on device health and connectivity across device deployments of any size
- Create detailed reports and enable real-time alerts for specified conditions
- Integrate device data through open APIs to gain deeper insights and control with third-party applications
- Report and alert on performance statistics, including connection history, signal quality, latency, data usage and packet loss

INFRASTRUCTURE

- Hosted in a commercial-grade cloud server environment that meets SOC 1®, SOC 2® and SOC 3® standards
- Superior availability, operating to 99.9% or greater
- Open APIs available to support application development

SECURITY

- More than 175 security controls in place to protect your data
- Member of the Center for Internet Security® (CIS®)
- Enables compliance with security frameworks like ISO27002, HIPAA, NIST and more
- Earned Skyhigh's CloudTrust™ Program highest rating of Enterprise-Ready

PART NUMBERS	DIGI EX12
EX12-R004-OUS	Digi EX12 with Remote Mounting Kit — 2-port 10/100; RJ-45, RS-232; US and Canada, LTE / HSPA+ Cat 4; FirstNet Ready™ Includes antennas, power supply, site survey battery, PoE injector and mounting accessories
EX12-0004-OUS	Digi EX12 without Remote Mounting Kit — 2-port 10/100; RJ-45, RS-232; US and Canada, LTE / HSPA+ Cat 4; FirstNet Ready™ Includes antennas and power supply

PART NUMBERS	ACCESSORIES
76002112	18 V PSU power supply with barrel jack connector (replacement)
500170	10/100 base-T passive PoE adapter, green (replacement)
440084	4 meter flat Cat 6 Ethernet cable, white (replacement)
440091	0.5 meter flat Cat 6 Ethernet cable, white (replacement)
560083	Temporary site survey battery pack, 9V with 152.4 mm power lead, 2.1 mm barrel connector (replacement)

PART NUMBERS	DIGI REMOTE MANAGER®
DIGI-RM-STD-1YR	Digi Remote Manager Standard — 1-year subscription
DIGI-RM-PRM-1YR	Digi Remote Manager Premier — 1-year subscription
DIGI-RM-PRM-3YR	Digi Remote Manager Premier — 3-year subscription
DIGI-RM-PRM-5YR	Digi Remote Manager Premier — 5-year subscription

FOR MORE INFORMATION
PLEASE VISIT [DIGI.COM](https://www.digi.com)

FirstNet® and FirstNet Ready™ are registered trademarks and service marks of the First Responder Network Authority.

DIGI SERVICE AND SUPPORT / You can purchase with confidence knowing that Digi is always available to serve you with expert technical support and our industry leading warranty. For detailed information visit www.digi.com/support.

© 1996-2022 Digi International Inc. All rights reserved.
All trademarks are the property of their respective owners.

91004418
C1/822

DIGI INTERNATIONAL WORLDWIDE HQ
877-912-3444 / 952-912-3444 / www.digi.com

DIGI INTERNATIONAL JAPAN
+81-3-5428-0261 / www.digi-intl.co.jp

DIGI INTERNATIONAL GERMANY
+49-89-540-428-0

DIGI INTERNATIONAL SINGAPORE
+65-6213-5380

DIGI INTERNATIONAL CHINA
+86-21-50492199 / www.digi.com.cn

