



Manage this device with Digi Remote Manager

# DIGI TX40

## Intelligent 5G wireless communications hub for public safety and fleet vehicles

An ideal and purpose-built solution for public safety and service fleets, **Digi TX40** breaks down communication silos and seamlessly connects the growing list of equipment in a vehicle into a fast and reliable vehicle area network (VAN). It enables you to digitally transform your fleet with latest generation wireless technology that is affordable, easy-to-deploy and centrally managed with **Digi Remote Manager**®.

Digi TX40 is available in 5G and 4G LTE-Advanced Pro with 3G fallback models that are **FirstNet Capable™** and support **Verizon Frontline** and **T-Mobile Connecting Heroes** to meet the critical demands of first responders for emergency communications.

### VIDEO

High-resolution, real-time video provides the critical element of situational awareness for dispatchers, command staff and officers arriving on the scene of a public safety incident. Digi TX40 with 5G and Wi-Fi 6 transfers critical information faster, further and more reliably.

### CONNECTIVITY

Digi TX40 connects vehicle equipment such as dash cameras, body cameras, license-plate readers, eTicket systems, and mobile data computers over Gigabit Ethernet, Wi-Fi 6, Bluetooth, USB 3.0, and serial interfaces. And the latest

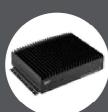
### FEATURES AND BENEFITS

- Wireless communications hub with 5G and Wi-Fi 6 for modern public safety connectivity
- ITxPT-certified for interoperability and seamless integration with other vehicle systems
- Meets U.S. government **FIPS 140-2** cybersecurity standard
- **FirstNet Capable™**, **Verizon Frontline** and **T-Mobile Connecting Heroes** support for primary responders
- **Digi Remote Manager** cloud-native platform to easily deploy, mass configure and maintain in-vehicle devices
- Available **Digi SAFE™** solution provides reliable connectivity and session persistence

### RELATED PRODUCTS AND SERVICES



Digi TX54



Digi TX64



Digi SAFE™



Digi Remote Manager®

multi-constellation GNSS technology with Untethered Dead Reckoning (UDR) ensures that Dispatch knows the vehicle location, even under the most challenging conditions.

### INTEROPERABILITY

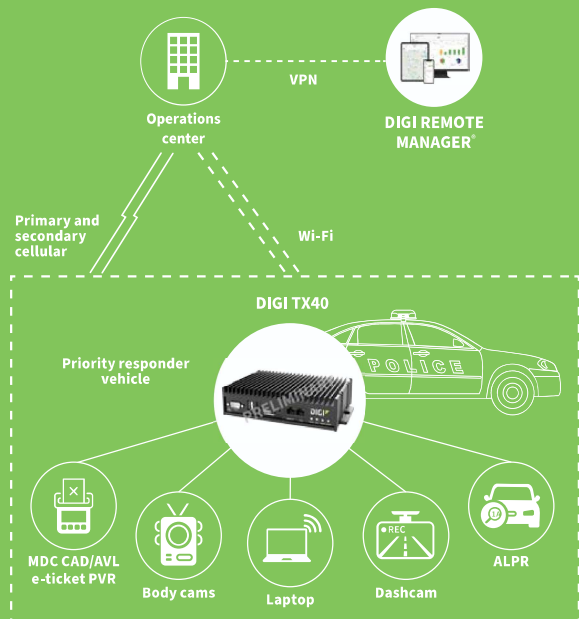
Digi TX40 is ITxPT-compliant to ensure interoperability and seamless integration with other vehicle systems for sharing connectivity, information and services. For example, Digi TX40 can share consistent and accurate location and time information with other systems, reducing complexity, points of failure and cost.

### SECURITY

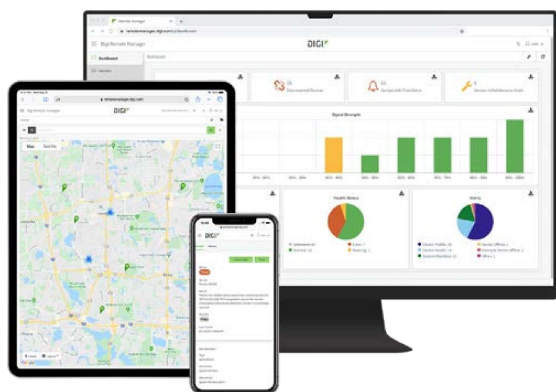
Cybersecurity is critical in today's communication systems, and vehicle area networks are no different. Digi TX40 meets the U.S. government cybersecurity **FIPS 140-2** standard and supports the **Digi TrustFence®** security framework to ensure it is secure on day one and stays secure throughout its life.

The available **Digi SAFE™** solution, powered by **Radio IP**, enables IT staff from multiple agencies to securely share one system within a single operating platform. The highly resilient application and session persistence helps ensure constant connectivity, enabling greater support for field personnel with mobile encryption and reliable data access, and keeping officers and citizens safer, while minimizing response times.

### APPLICATION EXAMPLE



## HARDWARE-ENABLED, SOFTWARE-DEFINED



### DAL OS

DAL OS is Digi's standard operating system integrated into Enterprise (EX), Industrial (IX) and Transportation (TX) routers, console servers and USB-connected devices.

Developed for speed and simplicity, DAL OS enables advanced capabilities that support today's demanding applications.

Learn more at [www.digi.com/DAL](http://www.digi.com/DAL)

### DIGI REMOTE MANAGER

Digi Remote Manager® is the technology platform that brings networks to the next level, allowing networks — and the people who manage them — to work smarter. With Digi Remote Manager you can transform a multitude of dispersed IoT devices into a dynamic, intelligent network. Now you can easily deploy, monitor and diagnose thousands of mission-critical devices from a single point of command — on your desktop, tablet or phone. All the while, its software-defined security diligently safeguards your entire Digi ecosystem.

Learn more at [www.digi.com/digi-remote-manager](http://www.digi.com/digi-remote-manager)



### DIGI TRUSTFENCE

Digi TrustFence® is a device-security framework that simplifies the process of securing connected devices.

#### BUILT-IN SECURITY. DELIVERED.

Designed for mission-critical applications, Digi TrustFence enables you to easily integrate device security, device identity, and data privacy capabilities into your product design. Digi TrustFence designs security into IoT devices that can grow and adapt with new and evolving threats.

Learn more at [www.digi.com/trustfence](http://www.digi.com/trustfence)

### CAPABILITIES

- **DAL OS with Digi Remote Manager:** Remote console access, Configuration Manager, HTTP proxy, device event logs, configurable maintenance window
- **Serial:** Digi RealPort®, Modbus, serial-over-TCP/UDP
- **Customization:** Python 3, Python pip, PyCharm integration, shell scripting, containers, MQTT Client
- **Troubleshooting tools:** iPerf and nuttcp bandwidth testing, Find Me tool
- **GNSS:** NMEA/TAIP location forwarding to multiple servers, geo-fencing
- Activate, monitor and diagnose your mission-critical devices from a single point of command and control
- Schedule key operations — including firmware updates and file management — on a single device or on a group of devices, keeping your network functionality up-to-date and maintaining compliance standards
- Manage edge devices out-of-band via console terminal access
- Keep tabs on device health and connectivity across device deployments of any size
- Create detailed reports and enable real-time alerts for specified conditions
- Integrate device data through open APIs to gain deeper insights and control with third-party applications
- Report and alert on performance statistics, including connection history, signal quality, latency, data usage and packet loss

### INFRASTRUCTURE

- Hosted in a commercial-grade cloud server environment that meets SOC 1®, SOC 2® and SOC 3® standards
- Superior availability, operating to 99.9% or greater
- Open APIs available to support application development

### SECURITY

- More than 175 security controls in place to protect your data
- Member of the Center for Internet Security® (CIS®)
- Enables compliance with security frameworks like ISO27002, HIPAA, NIST and more
- Earned Skyhigh's CloudTrust™ Program highest rating of Enterprise-Ready

### SECURE BOOT

- Programs and code running on the device are validated to be from an approved source or manufacturer.

### PROTECTED HARDWARE PORTS

- Internal and external I/O ports are hardened and access-controlled to prevent unwanted local intrusion.

### AUTHENTICATION

- Digi TrustFence provides data authentication and device identity management options. Furthermore, TrustFence ensures that products are not shipped with default user and password settings.

### SECURE CONNECTIONS

- Digi TrustFence utilizes the latest encryption protocols for data in motion and over-the-air (OTA) transmissions to ensure the integrity of data flowing across a network.

### ONGOING MONITORING AND SUPPORT

- Digi provides ongoing threat measurement and monitoring services, performs external security audits and proactively communicates with customers regarding upcoming threats.

## SPECIFICATIONS

## DIGI TX40

## WIRELESS INTERFACES

## CELLULAR / WWAN

<b>TX40-A500: 5G NSA, 5G SA, 4G LTE-ADVANCED PRO CAT 20</b>	5G NR bands: n1, n2, n3, n5, n7, n8, n12, n13, n14, n18, n20, n25, n26, n28, n29, n30, n38, n40, n41, n48 CBRS, n66, n70, n71, n75, n76, n77, n78, n79, C-band; 4G LTE-Advanced bands: B1, B2, B3, B4, B5, B7, B8, B12, B13, B14 FirstNet®, B17, B18, B19, B20, B25, B26, B28, B29, B30, B32, B34, B38, B39, B40, B41, B42, B43, B48 CBRS, B66, B71
<b>TX40-A400: 4G LTE-ADVANCED PRO CAT 12, 3G HSPA+</b>	4G LTE-Advanced bands: B1, B2, B3, B4, B7, B8, B12, B13, B14 FirstNet®, B17, B18, B19, B20, B25, B26, B28, B29, B30, B38, B39, B40, B41, B42, B43, B48 CBRS, B66, B71; 3G bands: B1, B2, B4, B5, B8, B9, B19
<b>CONNECTORS</b>	(2) or (4) FAKRA Code D (burgundy)
<b>SIM SLOTS</b>	(2) Nano-SIM (4FF)
<b>SIM SECURITY</b>	SIM slot cover plate included

## WI-FI

<b>TECHNOLOGY</b>	Wi-Fi 6 (802.11ax) dual-band (2.4 GHz and 5 GHz) concurrent 2 x 2 MIMO operation; backward compatible with Wi-Fi 5 (802.11ac) and Wi-Fi 4 (802.11n)
<b>SECURITY</b>	WPA, WPA2 and WPA3 Personal and Enterprise, Open and Open Enhanced security standards
<b>HOTSPOT</b>	Captive portal with customizable splash page, terms and conditions, shared password, user-specific password, RADIUS authentication
<b>THIRD-PARTY SERVICES</b>	Content filtering, embedded advertising
<b>MODES</b>	Simultaneous client and access point support with up to 10 clients and 2 access points
<b>CONNECTORS</b>	(2) FAKRA Code I (beige)

## BLUETOOTH

<b>TECHNOLOGY</b>	Bluetooth® 5.2
<b>GNSS</b>	
<b>TECHNOLOGY</b>	GPS, Galileo, BeiDou and GLONASS with Untethered Dead Reckoning (UDR), multiple geofence support
<b>SENSITIVITY</b>	Tracking and navigation: -160 dBm
<b>PROTOCOL</b>	NMEA 4.11 and TAIP
<b>CONNECTOR</b>	(1) FAKRA Code C (blue)

## WIRED INTERFACES

## ETHERNET

<b>PORTS / CONNECTOR</b>	(2) RJ-45; 10/100/1000 Mbps Base-T (auto-sensing); IEEE 802.3; configurable as WAN or LAN
--------------------------	---

## SERIAL

<b>PORTS / CONNECTOR</b>	(1) RS-232; DB-9 male (DTE)
--------------------------	-----------------------------

## USB

<b>PORTS / CONNECTOR</b>	(1) USB 3.0 Type A; 5 VDC 1 A max
--------------------------	-----------------------------------

## SOFTWARE &amp; MANAGEMENT

<b>REMOTE MANAGEMENT</b>	Digi Remote Manager® (cloud based); SNMP v1/v2c/v3 (user installed/managed), SMS
<b>LOCAL MANAGEMENT</b>	Web UI (HTTPS); CLI (SSH, serial)
<b>MANAGEMENT TOOLS</b>	SFTP, SCP; protocol analyzer with PCAP for Wireshark; event logging with Syslog

## MEMORY

<b>RAM / FLASH</b>	2 GB / 8 GB
--------------------	-------------

## PHYSICAL

<b>DIMENSIONS (L X W X H)</b>	198 x 138 x 44 mm (7.78 x 5.54 x 1.73 in)
<b>WEIGHT</b>	1 kg (2.2 lb)
<b>STATUS LEDS</b>	Power, GNSS, Wi-Fi, WWAN, Ethernet (link, activity)
<b>ENCLOSURE/RATING</b>	Aluminum / IP64
<b>POWER REQUIREMENTS</b>	
<b>POWER INPUT</b>	7 – 36 VDC, ignition sense
<b>POWER CONNECTOR</b>	Screw down removable terminal block
<b>POWER CONSUMPTION</b>	TBD

## SPECIFICATIONS

## DIGI TX40

### ENVIRONMENTAL

<b>OPERATING TEMPERATURE</b>	-34° C to 74° C (-29° F to 165° F)
<b>STORAGE TEMPERATURE</b>	-40° C to 85° C (-40° F to 185° F)
<b>RELATIVE HUMIDITY</b>	0% to 95% (non-condensing) at 25° C (77° F)

### APPROVALS\*

<b>CELLULAR</b>	PTCRB, AT&T, FirstNet Capable™, T-Mobile, T-Mobile Connecting Heroes, Verizon, Verizon Frontline
<b>SAFETY</b>	IEC 62368-1, CB scheme
<b>INTEROPERABILITY</b>	ITxPT (certification expected by April 2023)
<b>VEHICLE</b>	E-Mark (UNECE Reg. 10)
<b>EMISSIONS/IMMUNITY</b>	CE, FCC Part 15 Subpart B with IC, UKCA
<b>ENVIRONMENTAL</b>	MIL-STD-810H (high and low temperature, vibration, shock)

### WARRANTY\*\*

<b>PRODUCT WARRANTY</b>	3-year
-------------------------	--------

\*Expected in 2023; visit [www.digi.com/resources/certifications](http://www.digi.com/resources/certifications) for latest certifications

\*\*Standard 3-year warranty upgradeable to 5 years with purchase of a Digi Remote Manager Premier 5-year subscription applicable to the product purchased only at the time of product purchase and with product registration at that time in Digi Remote Manager.

## PRODUCT IMAGES

DIGI TX40



DIGI TX40 — FRONT



DIGI TX40 WITH SIM COVER



DIGI TX40 — FRONT WITH SIM COVER



DIGI TX40 — BACK



PART NUMBERS	DIGI TX40
TX40-A500	Digi TX40 — 5G and 4G LTE-Advanced Pro Cat 20, dual Ethernet, Wi-Fi 6, USB, RS-232, GNSS
TX40-A400	Digi TX40 — 4G LTE-Advanced Pro Cat 12 with 3G fallback, dual Ethernet, Wi-Fi 6, USB, RS-232, GNSS

PART NUMBERS	AVAILABLE ACCESSORIES*
76002136	Digi TX40 5G Accessory Kit — Extended temperature power supply, 5G/GNSS antenna, Wi-Fi antenna, Cat 5e Ethernet cable
76002137	Digi TX40 4G Accessory Kit — Extended temperature power supply, 4G/GNSS antenna, Wi-Fi antenna, Cat 5e Ethernet cable
76002138	Digi TX40 ITxPT Kit — Power connector adaptor, (2) M12/RJ-45 Cat 5e Ethernet cables
76002121	Power supply — 12 VDC, 2.5 A, extended temperature range

\*Sold separately, unless otherwise noted.

PART NUMBERS	DIGI REMOTE MANAGER®
DIGI-RM-STD-1YR	Digi Remote Manager Standard — 1-year subscription
DIGI-RM-PRM-1YR	Digi Remote Manager Premier — 1-year subscription
DIGI-RM-PRM-3YR	Digi Remote Manager Premier — 3-year subscription
DIGI-RM-PRM-5YR	Digi Remote Manager Premier — 5-year subscription

FOR MORE INFORMATION  
PLEASE VISIT [DIGI.COM](https://www.digi.com)



FirstNet® and FirstNet Capable™ are registered trademarks and service marks of the First Responder Network Authority.

The information provided in this document is preliminary and may be subject to change without notice.

**DIGI SERVICE AND SUPPORT** / You can purchase with confidence knowing that Digi is always available to serve you with expert technical support and our industry leading warranty. For detailed information visit [www.digi.com/support](https://www.digi.com/support).

© 1996-2022 Digi International Inc. All rights reserved.  
All trademarks are the property of their respective owners.

91004581  
A9/1022

**DIGI INTERNATIONAL WORLDWIDE HQ**  
877-912-3444 / 952-912-3444 / [www.digi.com](https://www.digi.com)

**DIGI INTERNATIONAL JAPAN**  
+81-3-5428-0261 / [www.digi-intl.co.jp](https://www.digi-intl.co.jp)

**DIGI INTERNATIONAL GERMANY**  
+49-89-540-428-0

**DIGI INTERNATIONAL SINGAPORE**  
+65-6213-5380

**DIGI INTERNATIONAL CHINA**  
+86-21-50492199 / [www.digi.com.cn](https://www.digi.com.cn)

