

**2 CHANNEL LOW CAPACITANCE CSP TVS DIODE ARRAY**

**Product Summary**

V <sub>BR</sub> (Min)	I <sub>PP</sub> (Max)	C <sub>I/O</sub> (Max)
6V	5.5A	0.75pF

**Description**

This new generation TVS is designed to protect sensitive electronics from the damage due to ESD. The combination of small size and high ESD surge capability makes it ideal for use in portable applications such as cellular phones, digital cameras, and MP3 players.

**Applications**

Typically used at high-speed ports such as USB 2.0, IEEE1394 (FireWire®, iLink), Serial ATA, DVI™, HDMI™, PCI™.

**Features**

- Clamping Voltage: 9V at 10A 100ns, TLP 9.4V at 5.5A 8µs/20µs
- IEC 61000-4-2 (ESD): Air — ±16kV, Contact — ±16kV
- IEC 61000-4-5 (Lightning): 5.5A (8/20µs)
- 2 Channels of ESD Protection
- Low Channel Input Capacitance of 0.75pF Max
- TLP Dynamic Resistance: 0.25Ω
- **Totally Lead-Free & Fully RoHS Compliant (Notes 1 & 2)**
- **Halogen and Antimony Free. "Green" Device (Note 3)**

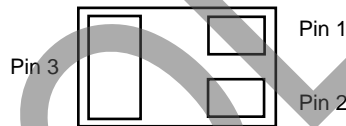
**Mechanical Data**

- Case: X3-DSN1006-3
- Case Material: Chip Scale Package
- Moisture Sensitivity: Level 1 per J-STD-020
- Terminals: NiAu Bump. Solderable per MIL-STD-202, Method 208 (64)
- Weight: 0.001 grams (Approximate)

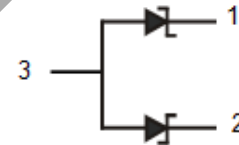
X3-DSN1006-3 (Type B)



Top View



Bottom View



Device Schematic

**Ordering Information** (Note 4)

Product	Compliance	Marking	Reel Size (inches)	Tape Width (mm)	Quantity per Reel
DT1240-02LP10-7B	Standard	MJ	7	8	10,000/Tape & Reel

- Notes:
1. No purposely added lead. Fully EU Directive 2002/95/EC (RoHS), 2011/65/EU (RoHS 2) & 2015/863/EU (RoHS 3) compliant.
  2. See <https://www.diodes.com/quality/lead-free/> for more information about Diodes Incorporated's definitions of Halogen- and Antimony-free, "Green" and Lead-free.
  3. Halogen- and Antimony-free "Green" products are defined as those which contain <900ppm bromine, <900ppm chlorine (<1500ppm total Br + Cl) and <1000ppm antimony compounds.
  4. For packaging details, go to our website at <https://www.diodes.com/design/support/packaging/diodes-packaging/>.

**Marking Information**



Top View  
Bar Denotes  
Pin 1 and Pin 2

MJ = Product Type Marking Code

OBSOLETE - PART DISCONTINUED

**Maximum Ratings** (@T<sub>A</sub> = +25°C, unless otherwise specified.)

Characteristic	Symbol	Value	Unit	Conditions
Peak Pulse Current, per IEC 61000-4-5	I <sub>PP</sub>	5.5	A	I/O to V <sub>SS</sub> , 8/20μs
Peak Pulse Power, per IEC 61000-4-5	P <sub>PP</sub>	55	W	I/O to V <sub>SS</sub> , 8/20μs
ESD Protection – Contact Discharge, per IEC 61000-4-2	V <sub>ESD_CONTACT</sub>	±16	kV	I/O to V <sub>SS</sub>
ESD Protection – Air Discharge, per IEC 61000-4-2	V <sub>ESD_AIR</sub>	±16	kV	I/O to V <sub>SS</sub>
Operating Temperature	T <sub>OP</sub>	-55 to +85	°C	—
Storage Temperature	T <sub>STG</sub>	-55 to +150	°C	—

**Thermal Characteristics**

Characteristic	Symbol	Value	Unit
Power Dissipation Typical (Note 5)	P <sub>D</sub>	500	mW
Thermal Resistance, Junction to Ambient Typical (Note 5)	R <sub>θJA</sub>	250	°C/W

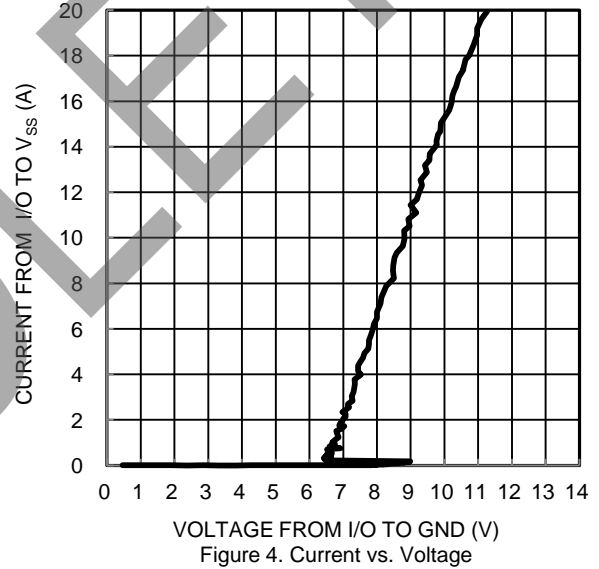
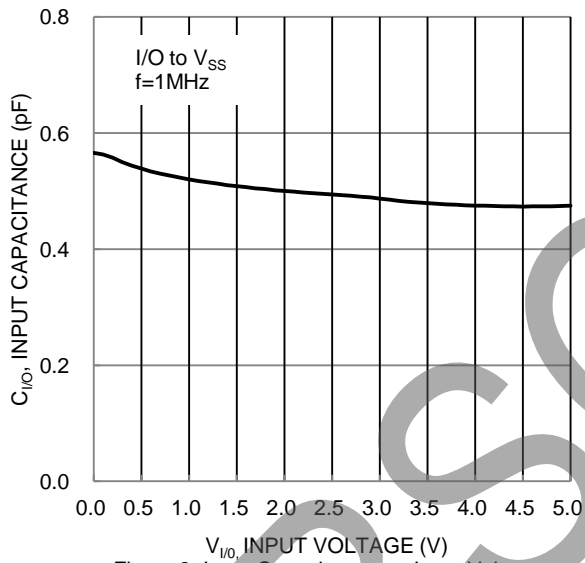
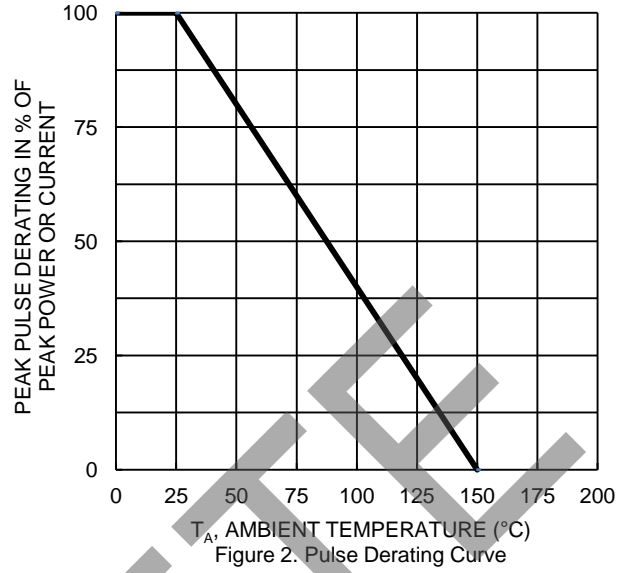
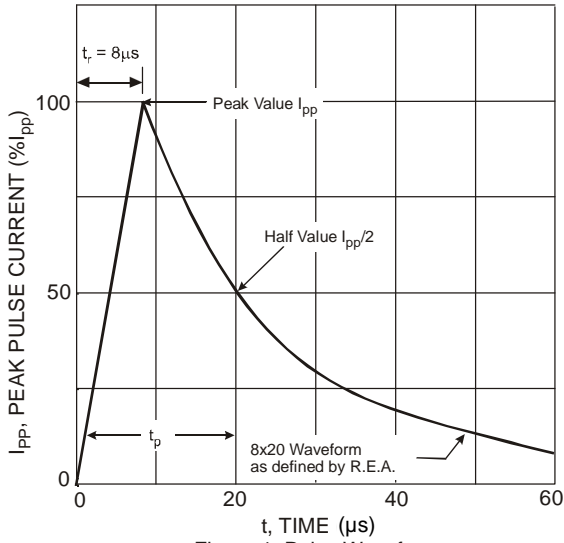
**Electrical Characteristics** (@T<sub>A</sub> = +25°C, unless otherwise specified.)

Characteristic	Symbol	Min	Typ	Max	Unit	Test Conditions
Reverse Working Voltage	V <sub>RWM</sub>	—	—	5.5	V	I <sub>R</sub> =1mA, I/O to V <sub>SS</sub>
Reverse Current	I <sub>R</sub>	—	—	0.5	μA	V <sub>R</sub> = 5.5V, I/O to V <sub>SS</sub>
Reverse Breakdown Voltage	V <sub>BR</sub>	6	—	—	V	I <sub>R</sub> = 1mA, I/O to V <sub>SS</sub>
Forward Clamping Voltage	V <sub>F</sub>	-1.0	-0.85	—	V	I <sub>F</sub> = -15mA, I/O to V <sub>SS</sub>
Reverse Clamping Voltage (Note 6)	V <sub>C</sub>	—	9.4	11	V	I <sub>PP</sub> = 5.5A, I/O to V <sub>SS</sub> , 8/20μs
ESD Clamping Voltage	V <sub>ESD</sub>	—	9	—	V	TLP, 10A, tp = 100ns, I/O to V <sub>SS</sub>
Dynamic Reverse Resistance	R <sub>DIF-R</sub>	—	0.25	—	Ω	TLP, 10A, tp = 100ns, I/O to V <sub>SS</sub>
Dynamic Forward Resistance	R <sub>DIF-F</sub>	—	0.25	—	Ω	TLP, 10A, tp = 100ns, V <sub>SS</sub> to I/O
Channel Input Capacitance	C <sub>I/O</sub>	—	—	0.75	pF	V <sub>I/O</sub> = 2.5V, V <sub>SS</sub> = 0V, f = 1MHz
Delta C <sub>I/O</sub>	C <sub>I/OMAX</sub> -C <sub>I/OMIN</sub>	—	0.04	—	pF	C <sub>I/OMAX</sub> -C <sub>I/OMIN</sub>

- Notes:
5. Device mounted on FR-4 PCB pad layout (2oz copper) as shown on Diodes Incorporated's suggested pad layout, which can be found on our website at <http://www.diodes.com/package-outlines.html>.
  6. Clamping voltage value is based on an 8x20μs peak pulse current (I<sub>PP</sub>) waveform.

OBSOLETE - PART DISCONTINUED

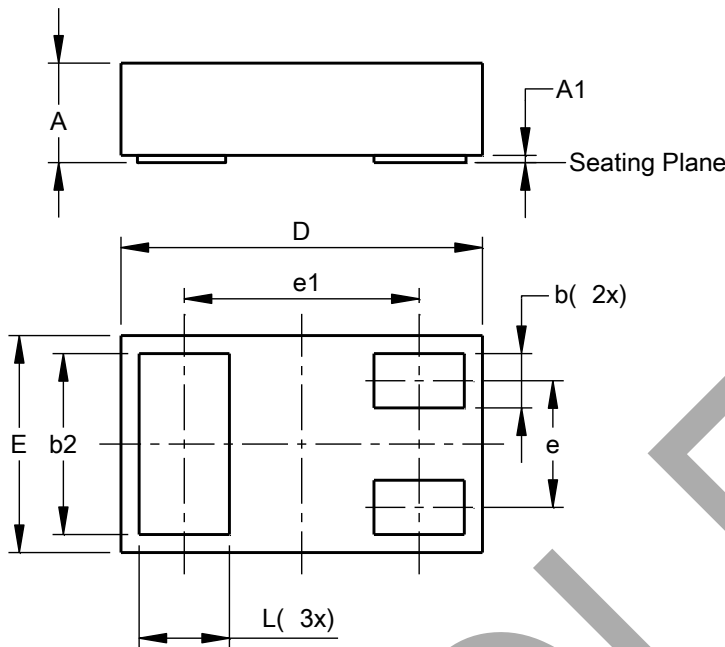
OBSOLETE



**Package Outline Dimensions**

Please see <http://www.diodes.com/package-outlines.html> for the latest version.

**X3-DSN1006-3 (Type B)**



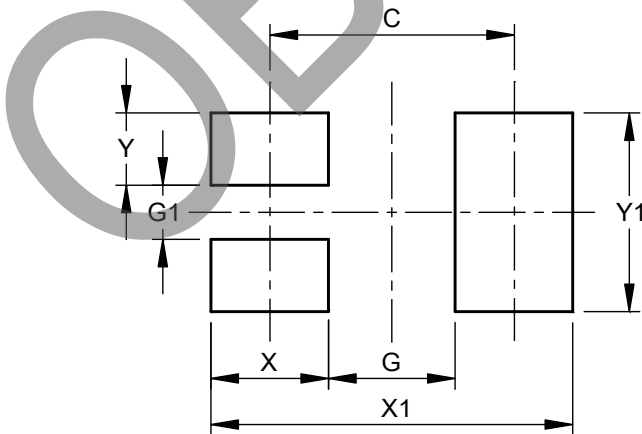
X3-DSN1006-3 (Type B)			
Dim	Min	Max	Typ
A	0.250	0.300	0.275
A1	0.00	0.02	0.01
b	0.130	0.170	0.150
b2	0.480	0.520	0.500
D	0.975	1.025	1.00
E	0.575	0.625	0.600
e	--	--	0.350
e1	--	--	0.650
L	0.230	0.270	0.250
All Dimensions in mm			

Note 7: Device side walls are electrically active bare silicon. Avoid contact of solder or flux on the side walls during the PCB assembly process.

**Suggested Pad Layout**

Please see <http://www.diodes.com/package-outlines.html> for the latest version.

**X3-DSN1006-3 (Type B)**



Dimensions	Value (in mm)
C	0.70
G	0.30
G1	0.20
X	0.40
X1	1.10
Y	0.25
Y1	0.70

**IMPORTANT NOTICE**

DIODES INCORPORATED MAKES NO WARRANTY OF ANY KIND, EXPRESS OR IMPLIED, WITH REGARDS TO THIS DOCUMENT, INCLUDING, BUT NOT LIMITED TO, THE IMPLIED WARRANTIES OF MERCHANTABILITY AND FITNESS FOR A PARTICULAR PURPOSE (AND THEIR EQUIVALENTS UNDER THE LAWS OF ANY JURISDICTION).

Diodes Incorporated and its subsidiaries reserve the right to make modifications, enhancements, improvements, corrections or other changes without further notice to this document and any product described herein. Diodes Incorporated does not assume any liability arising out of the application or use of this document or any product described herein; neither does Diodes Incorporated convey any license under its patent or trademark rights, nor the rights of others. Any Customer or user of this document or products described herein in such applications shall assume all risks of such use and will agree to hold Diodes Incorporated and all the companies whose products are represented on Diodes Incorporated website, harmless against all damages.

Diodes Incorporated does not warrant or accept any liability whatsoever in respect of any products purchased through unauthorized sales channel. Should Customers purchase or use Diodes Incorporated products for any unintended or unauthorized application, Customers shall indemnify and hold Diodes Incorporated and its representatives harmless against all claims, damages, expenses, and attorney fees arising out of, directly or indirectly, any claim of personal injury or death associated with such unintended or unauthorized application.

Products described herein may be covered by one or more United States, international or foreign patents pending. Product names and markings noted herein may also be covered by one or more United States, international or foreign trademarks.

This document is written in English but may be translated into multiple languages for reference. Only the English version of this document is the final and determinative format released by Diodes Incorporated.

**LIFE SUPPORT**

Diodes Incorporated products are specifically not authorized for use as critical components in life support devices or systems without the express written approval of the Chief Executive Officer of Diodes Incorporated. As used herein:

A. Life support devices or systems are devices or systems which:

1. are intended to implant into the body, or
2. support or sustain life and whose failure to perform when properly used in accordance with instructions for use provided in the labeling can be reasonably expected to result in significant injury to the user.

B. A critical component is any component in a life support device or system whose failure to perform can be reasonably expected to cause the failure of the life support device or to affect its safety or effectiveness.

Customers represent that they have all necessary expertise in the safety and regulatory ramifications of their life support devices or systems, and acknowledge and agree that they are solely responsible for all legal, regulatory and safety-related requirements concerning their products and any use of Diodes Incorporated products in such safety-critical, life support devices or systems, notwithstanding any devices- or systems-related information or support that may be provided by Diodes Incorporated. Further, Customers must fully indemnify Diodes Incorporated and its representatives against any damages arising out of the use of Diodes Incorporated products in such safety-critical, life support devices or systems.

Copyright © 2019, Diodes Incorporated

[www.diodes.com](http://www.diodes.com)