

## Multi Stage High Performance EMI Filter



- Rated current from 1 to 16 A
- Multi stage filter with good low frequency attenuation
- High differential mode and common mode attenuation performance
- Optional medical version (Type B)
- Optional safety version (Type A)

### Approvals:



### Technical specifications

Maximum continuous operating voltage: 250VAC, 50/60Hz

Operating frequency: dc to 400Hz

Rated currents: 1 to 16A @ 40°C max.

High potential test voltage: L → PE 3000VDC for 2 sec (standard types)

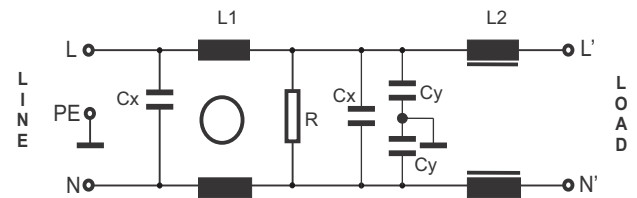
L → PE 3500VDC for 2 sec (B types)

L → N 1100VDC for 2 sec

Temperature range (operation and storage): -25°C to +100°C (25/100/21)

Design corresponding to: UL 1283.

### CIRCUIT DIAGRAM:



### Feature and Benefits

- BL2080 two-stage filters are designed for easy and fast chassis mounting.
- The BL2080 filters are also available as B versions with no Y-capacitors for medical applications as well as A versions with low capacitance for safety critical applications with a requirement for low leakage currents.
- All filters provide an general purpose conducted attenuation performance, based on chokes with high saturation resistance and excellent thermal behavior.
- The BL 2080 Filter are design for good low frequency attenuation
- BL 2080 filters are also available as single stage filters .
- Various terminal options allow you to select the desired connection style

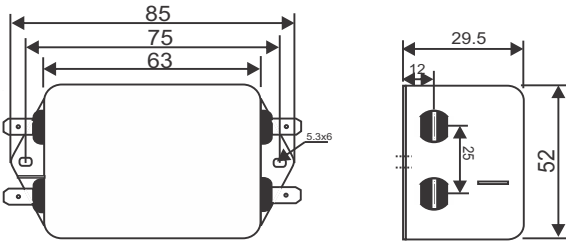
### Typical Application

- Electrical and electronic equipment
- Consumer goods
- Household equipment
- Medical equipment
- Electronic data processing equipment
- Office automation and datacom equipment
- Industrial application
- Machinery
- Various noisy application requires good attenuation performance filter

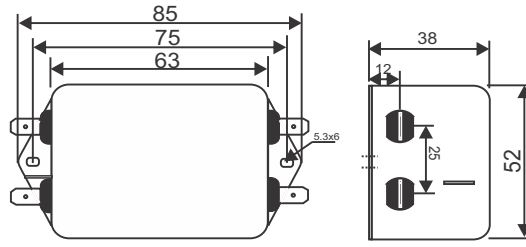


**MECHANICAL DIMENSION (mm):**

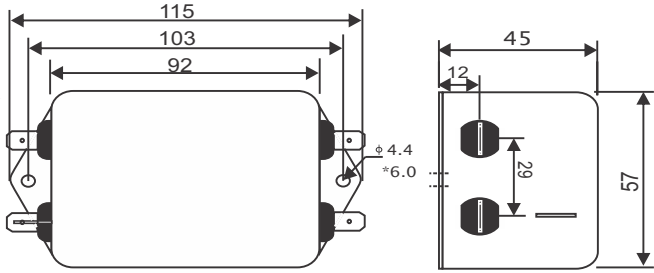
CONNECTION TYPE -F  
1A



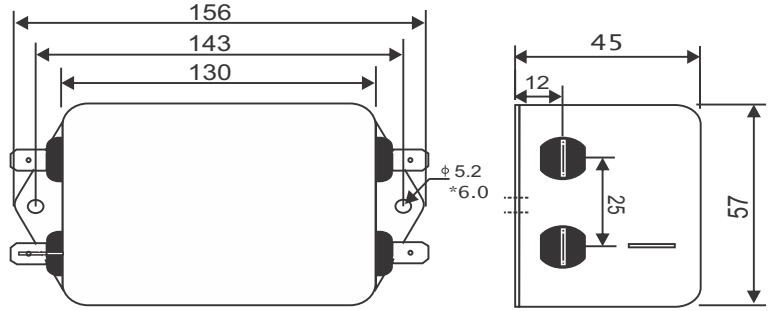
CONNECTION TYPE -F  
3A



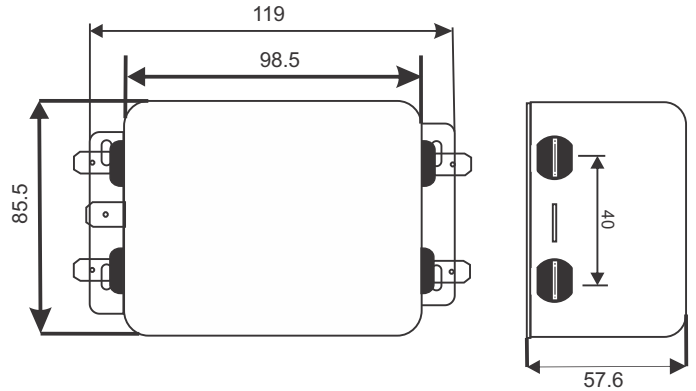
CONNECTION TYPE -F  
6A



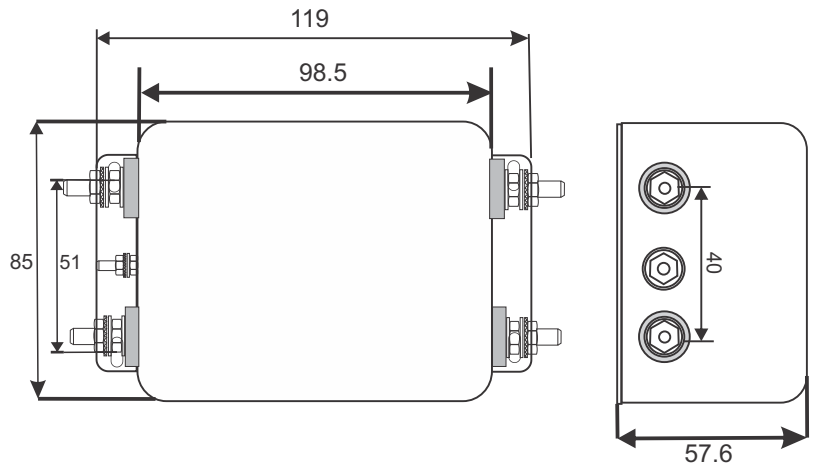
CONNECTION TYPE -F  
10A & 12A



CONNECTION TYPE -F  
16A



CONNECTION TYPE -S  
16A



**NOTE:**

All Dimension in mm  
 Connection type F-Fast On Terminal(6.3x0.8)  
 S-Screw (M4)