

# EMI/EMC FILTER

RoHS

IS SERIES



## Features

- A fuse holder and a double pole power ON/OFF switch
- Good shield effect by using metal case
- Meet over voltage category II of IEC 60664 and comply with IEC 60950
- Uses IEC connector that meets the safety standards from certification bodies
- Safety approval :
  - KC, UL, CSA, SEMKO+ENEC
  - KC, cCSAus, SEMKO+ENEC(IS-\*\*4\*H\* type only)

## Applications

- Digital equipments
- Measuring and testing instruments
- Communication equipment

## Specifications

Model	Rated Voltage (AC, DC)	Rated Current	Leakage Current (250V AC)	Operating Temperature
IS-0242H2	250V (50/60Hz)	2A	0.35mA max.	-25°C to +85°C Including temperature rise 
IS-0442H2		4A		
IS-0642H2		6A		

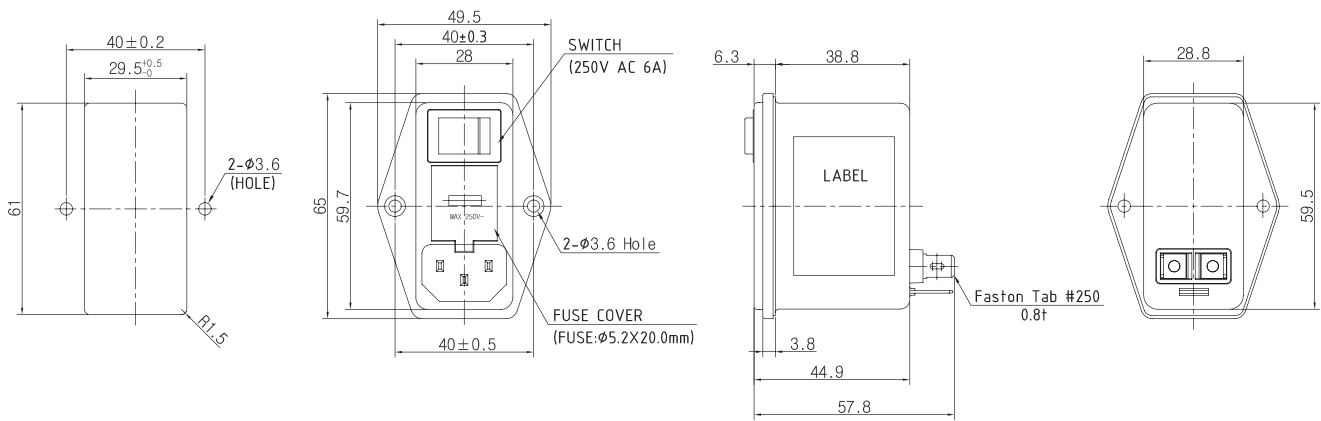
### Note

Test Voltage : 1500V AC one minute, line to earth  
 Insulation Resistance : 300 Mohm min. at 500V DC  
 Voltage Drop : 1V max. at rated current  
 Weight : 130g  
 Inlet : Compatible with IEC-60320

## Model Number Construction

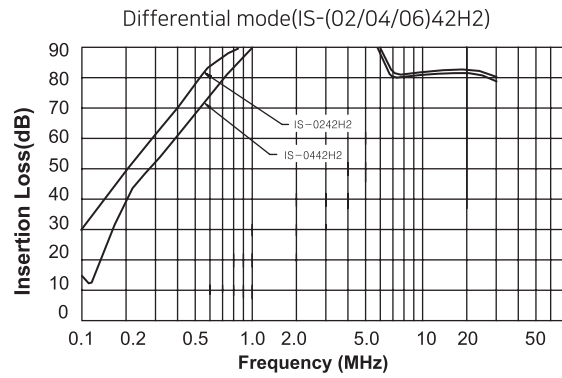
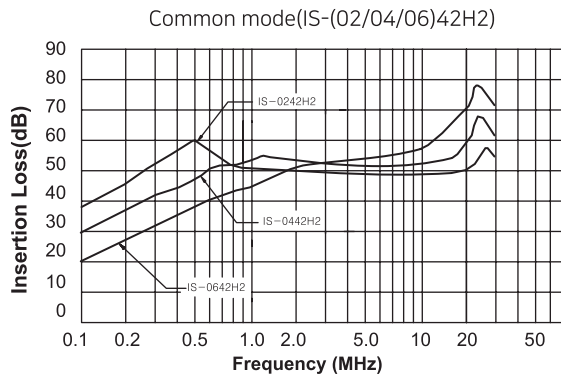
I	S	02	4	2	H	0
Input Connector I : IEC Connector	Special Design S : Screw Mounting/ With Double Pole Switch and Double Fuse	Current Rating : AC rms 02 : 2amp 04 : 4amp 06 : 6amp	Line-Line Cap.Value (Input side) 1 : 0.1 $\mu$ F 2 : 0.22 $\mu$ F 4 : 0.47 $\mu$ F	Line-Gnd Cap.Value 2 : 2200 pF 3 : 3300 pF C : 330 pF D : 470 pF 0 : None	Output Terminal H : Faston Tab #250	Line-Line Cap.Value (Output side) 0 : None 2 : 0.22 $\mu$ F

## Shapes and Dimensions

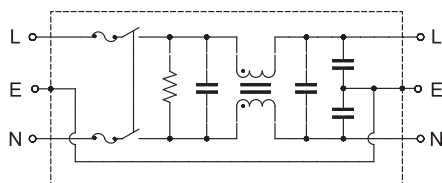


\* Unit : mm  
\* General tolerance :  $\pm 1.0$

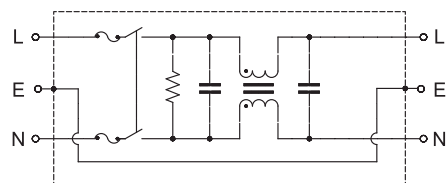
## Attenuation Characteristics



## Circuit Diagram

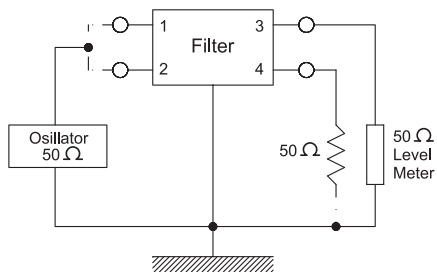


IS-\*\*\*\*-H\* type

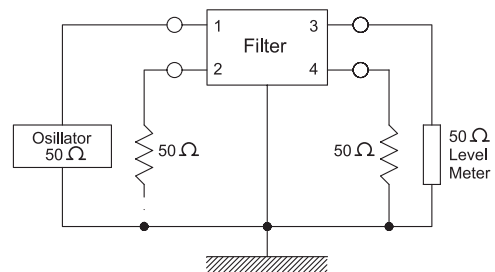


IS-\*\*\*0-H\* type

## Measurement Configuration



Common mode



Differential mode