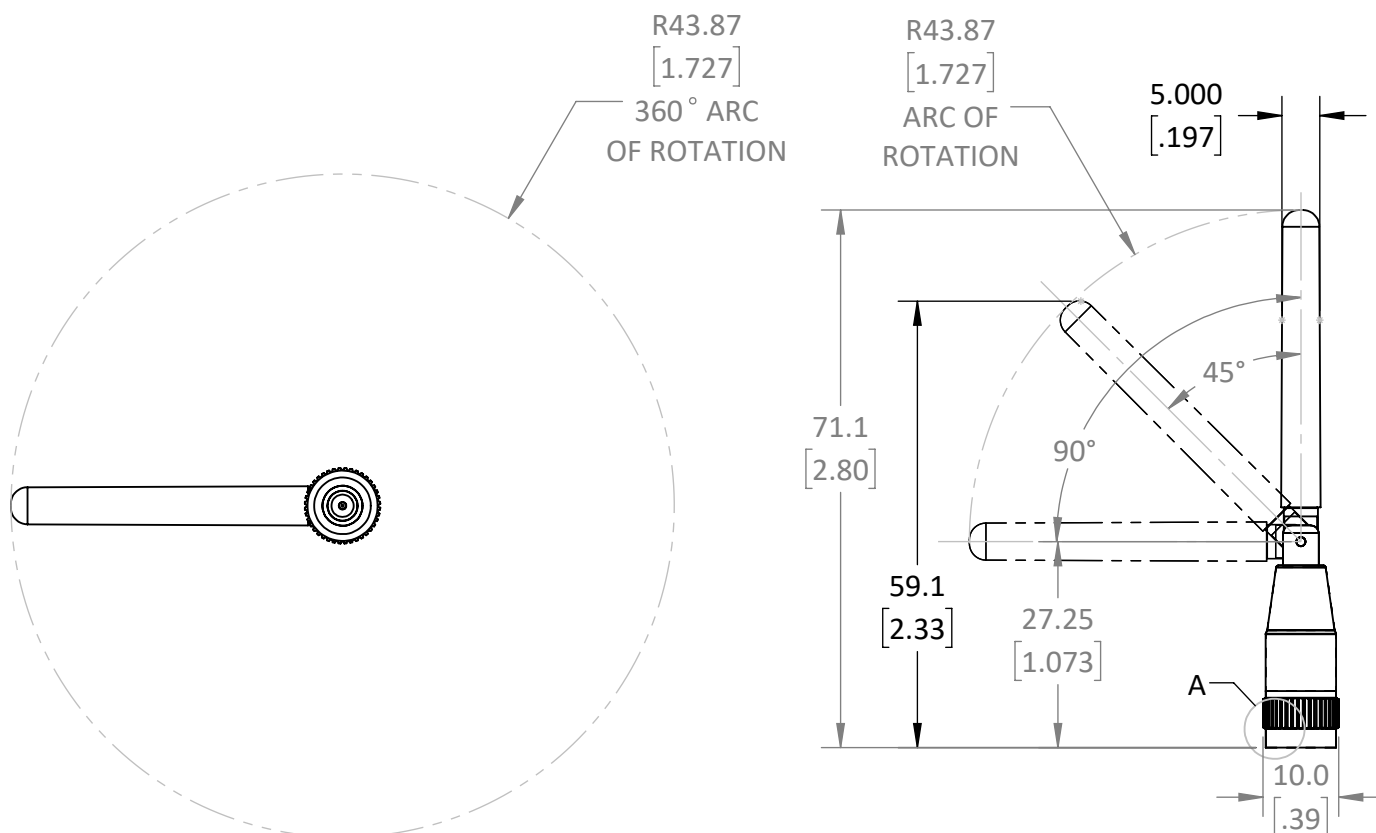
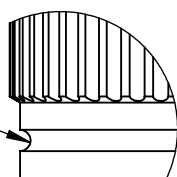


REVISIONS			
REV	DESCRIPTION	DATE	APPV
A	PRODUCTION RELEASE	JHAGER 10/7/2021	DV 10/12/21



TYPE E VISUAL
INDICATION
FEATURE



DETAIL A
SCALE 4 : 1

NOTES: (UNLESS OTHERWISE SPECIFIED)

1. ALL DIMENSIONS ARE IN MILLIMETERS [IN].
2. DIMENSIONS APPLY AFTER FINISHING.
3. MANUFACTURE TO BE COMPLIANT WITH EU RoHS DIRECTIVE, USE MATERIALS THAT DO NOT CONTAIN REACH SUBSTANCES OF VERY HIGH CONCERN >1000ppm, AND USE DRC CONFLICT-FREE SOURCED MATERIALS.
4. ELECTRICAL DATA SHOWN FOR REFERENCE ONLY. SEE LINX DATA SHEET FOR COMPLETE ELECTRICAL PROPERTIES.
 1. IMPEDANCE: 50Ω
 2. FREQUENCY: SEE TABLE
5. MECHANICAL PROPERTIES
 1. OPERATING TEMP: -40°- +130°C
 2. CONNECTOR: SMA TYPE INTERFACE IAW MIL-STD-348B
6. ANTENNAS QUALIFIED IAW LINX INTERNAL TEST PLAN AT LATEST REVISION
7. PACKAGE UNIT INDIVIDUALLY BEFORE PLACING IN LOT BAG.
8. LABEL LOT BAG AND BOX IAW LINX LABEL DRAWING [MEC-LBL-4x2.5-PAPER-ID]

ITEM NUMBER	CONNECTOR	ELEMENT CENTER FREQUENCY [MHz]	VSWR NOT TO EXCEED	RING FEATURE
ANT-LTE-MON-SMA	SMA	698-3800	4.6	NONE
ANT-LTE-MON-SMA-E	SMA	617-2485	6.8	PRESENT

WARNING: THIS DRAWING CONTAINS PROPRIETARY INFORMATION THAT IS THE SOLE PROPERTY OF LINX TECHNOLOGIES, AND SHALL BE TREATED AS SUCH. NO DISCLOSURE OR REPRODUCTION OF THIS DOCUMENT IS PERMITTED, IN WHOLE OR IN PART, WITHOUT THE EXPRESS WRITTEN PERMISSION OF LINX TECHNOLOGIES OR ITS DESIGNATED AGENTS.



159 ORT LANE
MERLIN, OR 97532

TITLE:

**ANTENNA, MON ADJ POSITION
LTE BANDS SMA CONNECTOR**

SIZE DWG. NO.

A C-ANT-LTE-MON-SMA-X

REV

A

SCALE: 1:1

DO NOT SCALE DRAWING

SHEET 1 OF 1

MATERIAL:
VAR
VAR

INTERPRET DIMENSIONS AND
TOLERANCES PER ASME Y14.5.

.X ±2.0
.XX ±1.00
.XXX ±.500

ANGLES: ±1°
SURFACE: ✓



FINISH:
BLACK
NICKEL

DRAWN: JHAGER

DT: 10/7/21

ENGR: DASARATHAN

DT: