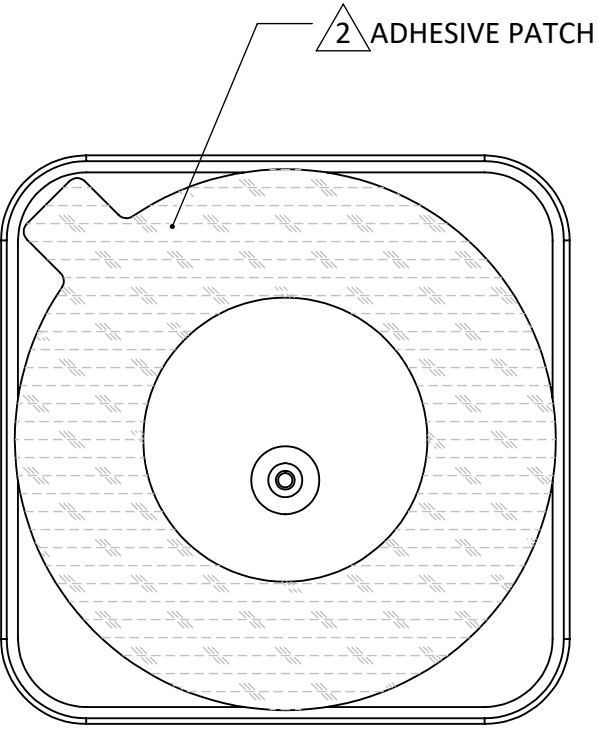
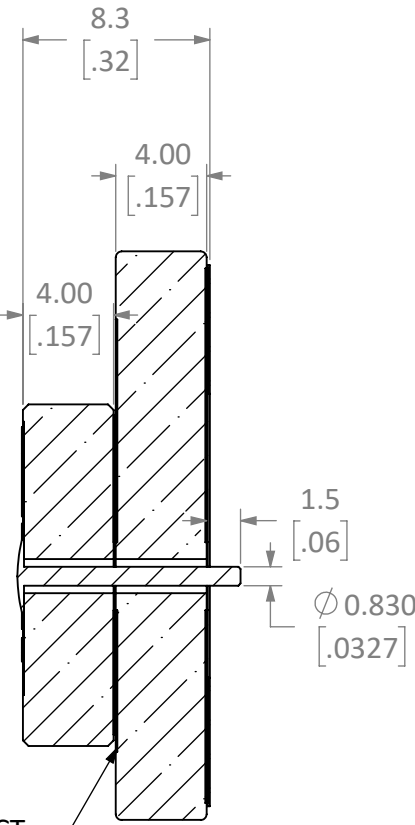
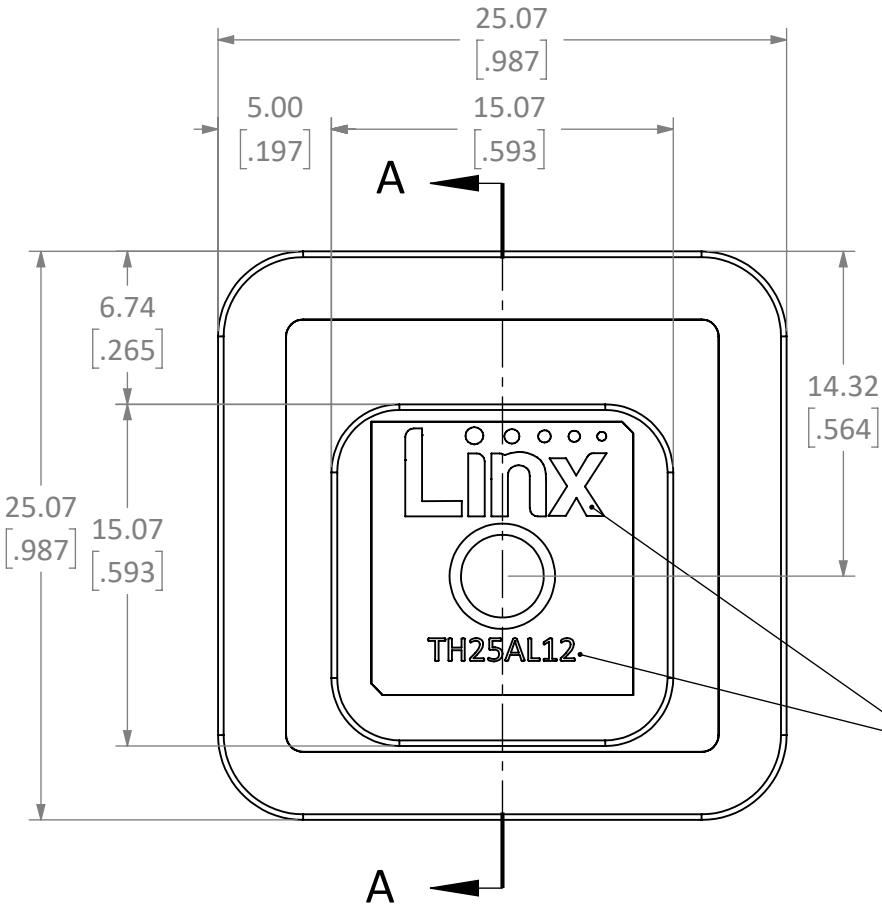


| REVISIONS |                    |                   |              |
|-----------|--------------------|-------------------|--------------|
| REV       | DESCRIPTION        | DATE              | APPV         |
| A         | PRODUCTION RELEASE | JHAGER<br>9/14/21 | DV<br>9/7/21 |



SECTION A-A

- NOTES: (UNLESS OTHERWISE SPECIFIED)
- ALL DIMENSIONS ARE IN MILLIMETERS [IN].
  - DIMENSIONS APPLY AFTER FINISHING.
  - MANUFACTURE TO BE COMPLIANT WITH EU RoHS DIRECTIVE,USE MATERIALS THAT DO NOT CONTAIN REACH SUBSTANCES OF VERY HIGH CONCERN >1000ppm, AND USE DRC CONFLICT-FREE SOURCED MATERIALS.
  - ENVIRONMENTAL:
    - OPERATING TEMP: -40°C - 105°C (STORAGE UP TO 105°C) RH:0%-95%
    - SELF STICK ADHESIVE: NITTO 5015. APPLY BETWEEN 15°C - 40°C.
  - ELECTRICAL THROUGHPUT LISTED FOR REFERENCE ONLY. SEE LINX DATA SHEET DOCUMENT FOR ELECTRICAL PROPERTIES:
    - FRQ L1: 1.58GHz ± 1MHz
    - FRQ L2: 1.23 GHz ± 10MHz
    - IMPEDANCE: 50Ω
    - VSWR: 1.8 MAX CENTER FREQUENCY
  - ANTENNA QUALIFIED IAW LINX INTERNAL TEST PLAN AT LATEST REVISION
  - SILKSCREEN APPROXIMATELY AS SHOWN USING BLACK PERMINANT INK. LABEL GEOMETRY CONTROLLED BY PROVIDED .ai FILE AT LATEST REVISION.
  - PACKAGING SHOULD BE LABELED WITH THE LOT NUMBER, LINX PART NUMBER, QUANTITY, AND COUNTRY OF ORIGIN ONLY ON THE BOX, TRAY AND BAG.

**WARNING:** THIS DRAWING CONTAINS PROPRIETARY INFORMATION THAT IS THE SOLE PROPERTY OF LINX TECHNOLOGIES, AND SHALL BE TREATED AS SUCH. NO DISCLOSURE OR REPRODUCTION OF THIS DOCUMENT IS PERMITTED, IN WHOLE OR IN PART, WITHOUT THE EXPRESS WRITTEN PERMISSION OF LINX TECHNOLOGIES OR ITS DESIGNATED AGENTS.

**TE connectivity** 159 ORT LANE  
MERLIN, OR 97532

TITLE:  
**ANT GNSS L1/L2 25x25 STKD PTCH**

|                      |   |                            |
|----------------------|---|----------------------------|
| MATERIAL:<br>CERAMIC | INTERPRET DIMENSIONS AND TOLERANCES PER ASME Y14.5. | PROJECTION:<br>            |
| WEIGHT:              | .X ±2.0<br>.XX ±1.00<br>.XXX ±.500                  | ANGLES: ±1°<br>SURFACE:    |
| FINISH:              | DRAWN: JHAGER<br>ENGR: DASARATHAN                   | DT: 9/15/21<br>DT: 9/15/21 |

|                  |                                 |                 |
|------------------|---------------------------------|-----------------|
| SIZE<br><b>B</b> | DWG. NO.<br>C-ANT-GNCP-TH25AL12 | REV<br><b>A</b> |
| SCALE: 3:1       | DO NOT SCALE DRAWING            | SHEET 1 OF 1    |

LDCDFB\_B