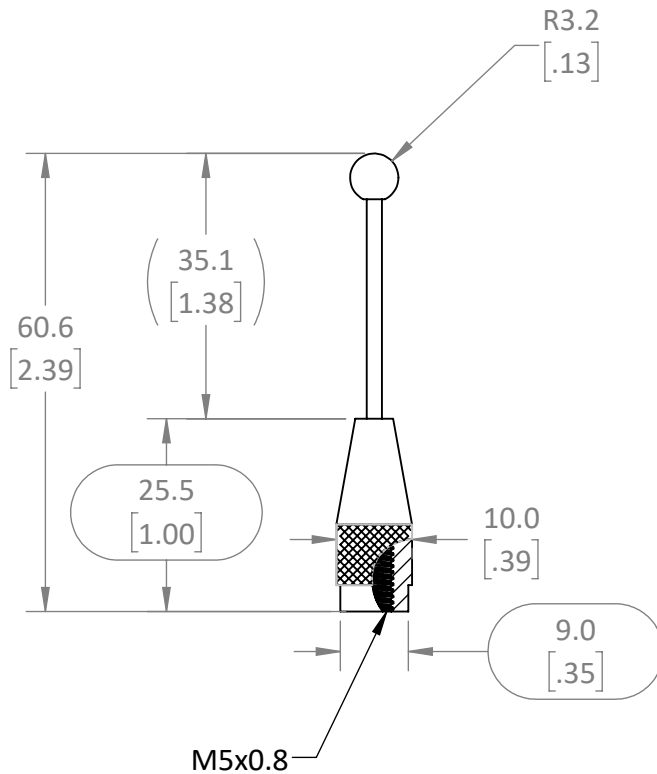


REVISIONS			
REV	DESCRIPTION	DATE	APPV
A	PRDUCTION RELEASE	AJVM 10/4/2022	



NOTES: (UNLESS OTHERWISE SPECIFIED)

1. ALL DIMENSIONS ARE IN MILLIMETERS [IN].
2. DIMENSIONS APPLY AFTER FINISHING.
3. MANUFACTURE TO BE COMPLIANT WITH EU RoHS DIRECTIVE, USE MATERIALS THAT DO NOT CONTAIN REACH SUBSTANCES OF VERY HIGH CONCERN >1000ppm, AND USE DRC CONFLICT-FREE SOURCED MATERIALS.
4. ELECTRICAL SPECIFICATIONS ARE LISTED FOR REFERENCE ONLY. SEE LINX DATA SHEET FOR ELECTRICAL PROPERTIES.
 1. IMPEDANCE: 50Ω
 2. FREQUENCY RANGE:
 1. BAND 1: 824-960MHz
 2. BAND 2: 1710-1990MHz
 3. PEAK GAIN:
 1. BAND 1: -3.9dBi
 2. BAND 2: -1.5dBi
 4. VSWR: ≤1.5 TYP. AT CENTER
5. MECHANICAL
 1. OPERATING TEMPERATURE RANGE: -40°C TO +80°C
6. PRODUCT QUALIFIED IAW LINX TEST PLAN AT CURRENT REVISION
7. UNLISTED DIMENSIONS ARE CONTROLLED BY SOLID MODEL AT LATEST REVISION.

WARNING: THIS DRAWING CONTAINS PROPRIETARY INFORMATION THAT IS THE SOLE PROPERTY OF LINX TECHNOLOGIES, AND SHALL BE TREATED AS SUCH. NO DISCLOSURE OR REPRODUCTION OF THIS DOCUMENT IS PERMITTED, IN WHOLE OR IN PART, WITHOUT THE EXPRESS WRITTEN PERMISSION OF LINX TECHNOLOGIES OR ITS DESIGNATED AGENTS.

MATERIAL:	INTERPRET DIMENSIONS AND TOLERANCES PER ASME Y14.5.		PROJECTION:
BRASS	.X ±2.0	ANGLES: ±1°	
	.XX ±1.00	SURFACE: √	
	.XXX ±.500		
FINISH:	DRAWN: JHAGER	DT:	
BLACK WP	ENGR:	DT: 10-JUL-08	



159 ORT LANE
MERLIN, OR 97532

TITLE:			
SHORT WHIP ELEMENT FOR MAG. 1 BASES			
SIZE	DWG. NO.	REV	
A	C-ANT-ELE-S01-010	A	
SCALE: 1:1	DO NOT SCALE DRAWING	SHEET 1 OF 1	