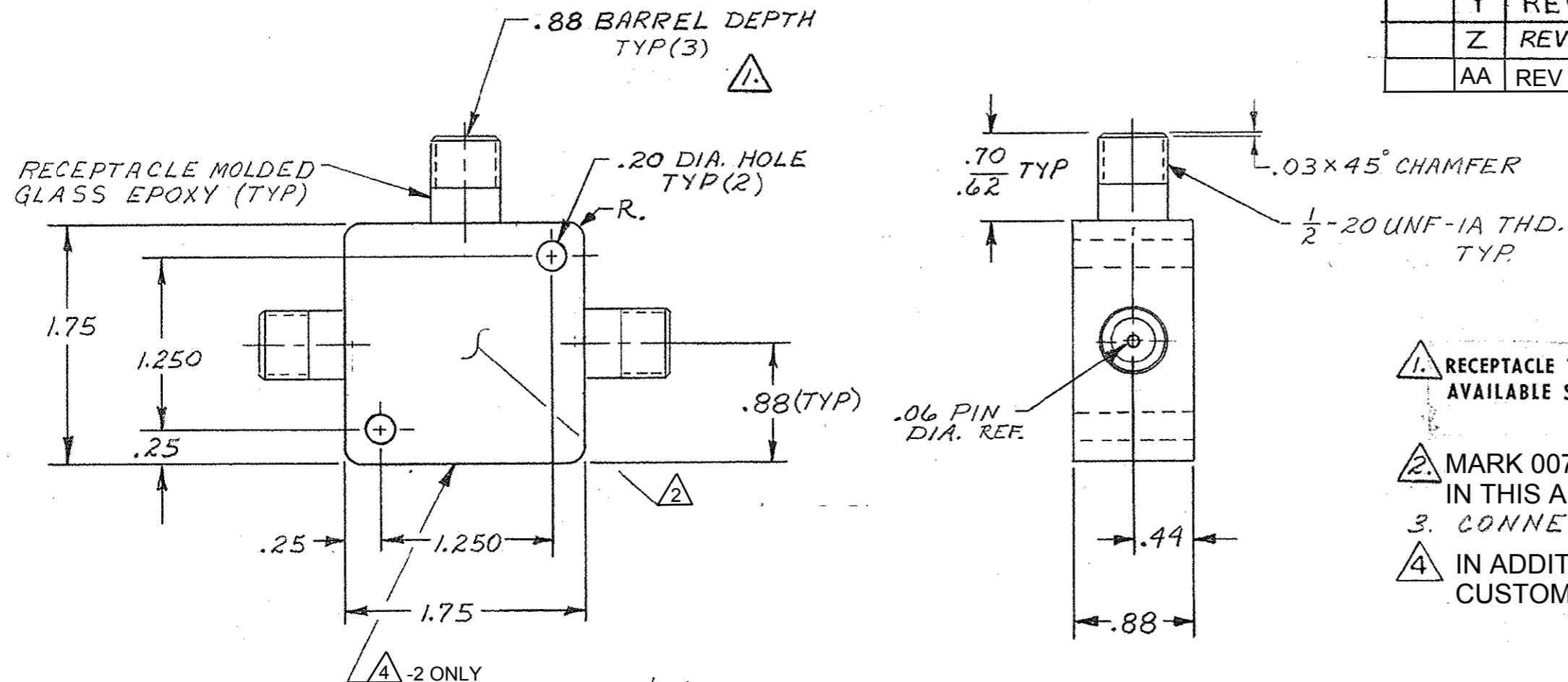


©1970 BY AMP INCORPORATED. ALL RIGHTS RESERVED. AMP PRODUCTS COVERED BY PATENTS AND/OR PATENTS PENDING.

THIS PRODUCT DESIGNED AND BUILT BY AMP INCORPORATED. NO LICENSE TO USE THAT DESIGN IN MANUFACTURE, OR TO USE ANY ISSUED OR PENDING PATENTS WHICH ARE INVOLVED, IS IMPLIED.



REVISIONS				
ZONE	LTR	DESCRIPTION	DATE	APPROVED
	T	REVISED & REDRAWN LK	9-4-70	Ken K.
	U	MATERIAL WAS- EPOXY, CDS	9-12-72	Ken K.
4-C	V	ADDED R. DEC	10-18-72	Ken K.
	W	UP-DATED ECN 8331 R.G.R.	7/28/78	gws
	Y	REV PER ECN 5-3960	4/16/87	RS
	Z	REV PER OH14-0192-05	1-06	PY
	AA	REV PER ECO-16-007494	01JUN16	DM

1. RECEPTACLE TO MATE WITH AMP LGH-1 LEAD ASSEMBLY AVAILABLE SEPARATELY.

2. MARK 00779, AMP, TE PART NUMBER, AND DATE CODE IN THIS APPROXIMATE AREA.

3. CONNECTOR IS COMMON.

4. IN ADDITION TO MARKING PER NOTE 2, MARK CUSTOMER PART NUMBER 18323-990C181H01.

5-836674-1	AS SHOWN WITH TIN PLATED PINS
836674-2	AS SHOWN WITH GOLD PLATED PINS
836674-1	AS SHOWN WITH TIN-LEAD PLATED PINS

QTY REQD	QTY REQD	ITEM NO.	DWG SIZE	PART OR IDENTIFYING NO.	NOMENCLATURE OR DESCRIPTION	SYMBOL
-2	-1					

				UNLESS OTHERWISE SPECIFIED: DIMENSIONS ARE IN INCHES TOLERANCES .00 = ±.02 ANGLES = .000 = ±.005	CONTRACT NO. DR C. DORWART 9-18-64	AMP INCORPORATED CAPITRON DIVISION ELIZABETHTOWN, PENNSYLVANIA	
				MATERIAL: MOLDED GLASS EPOXY	CHK	NAME LGH-1 "T" CONNECTOR	
				FINISH: RED	APPD	SIZE B	
					APPD	CODE IDENT NO. 89110	NUMBER 836674
					DSGN APPD	SCALE N.T.S.	
					OTHER APPD	WT	
						SHEET 1 OF 1	
NEXT ASSY	FINAL ASSY	NEXT ASSY	USED ON				
QTY REQD		APPLICATION					