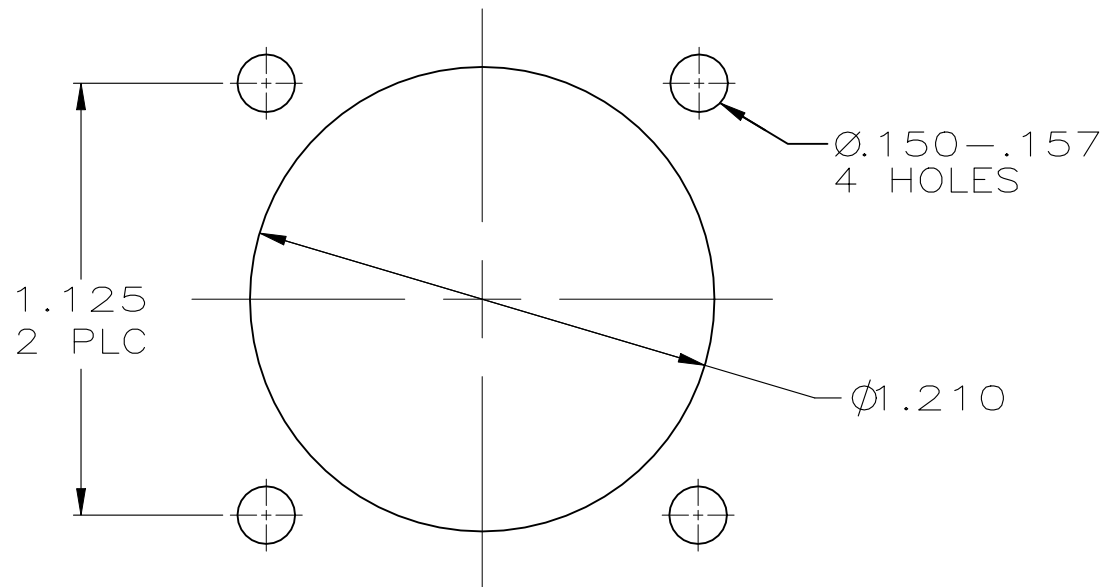
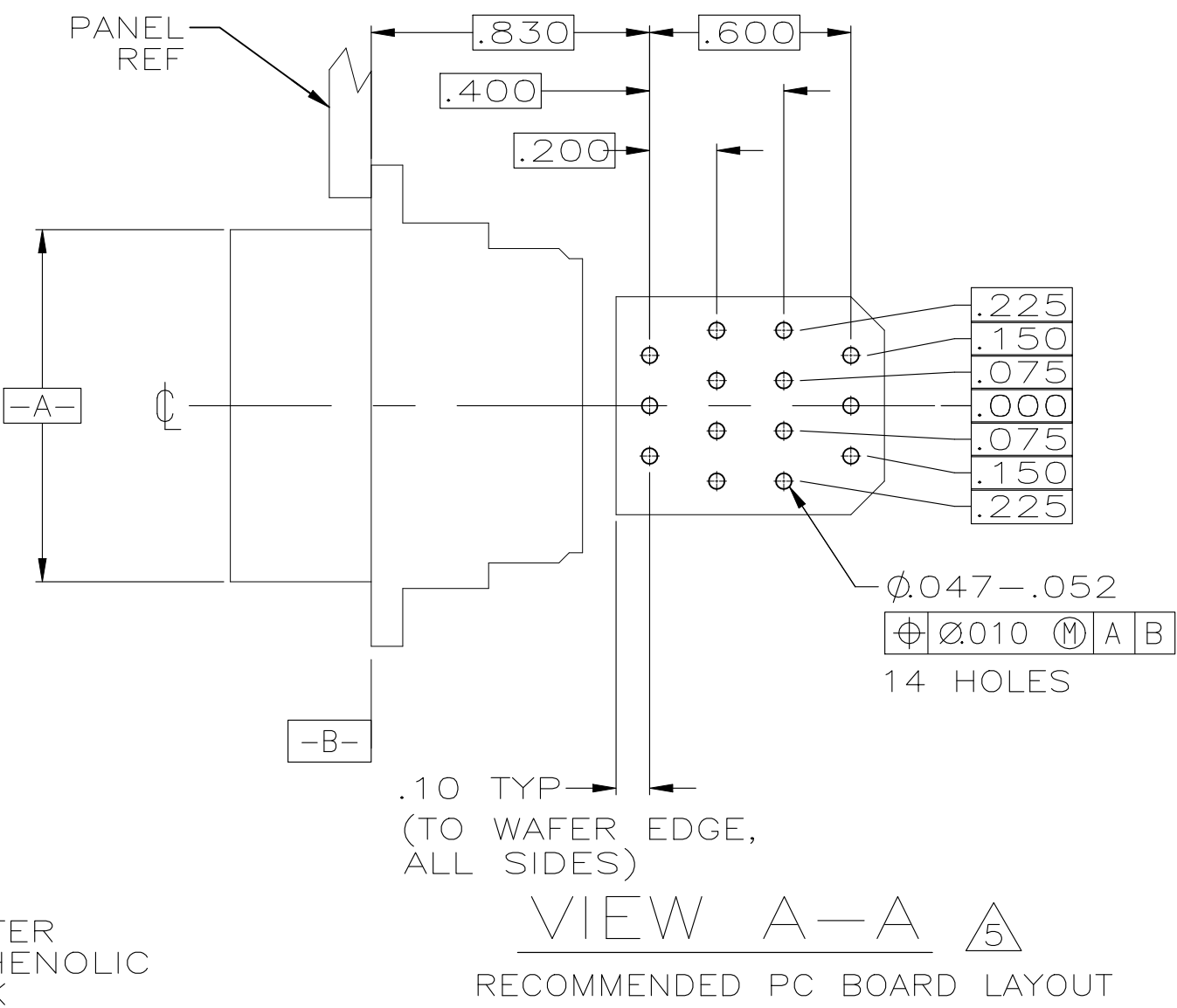
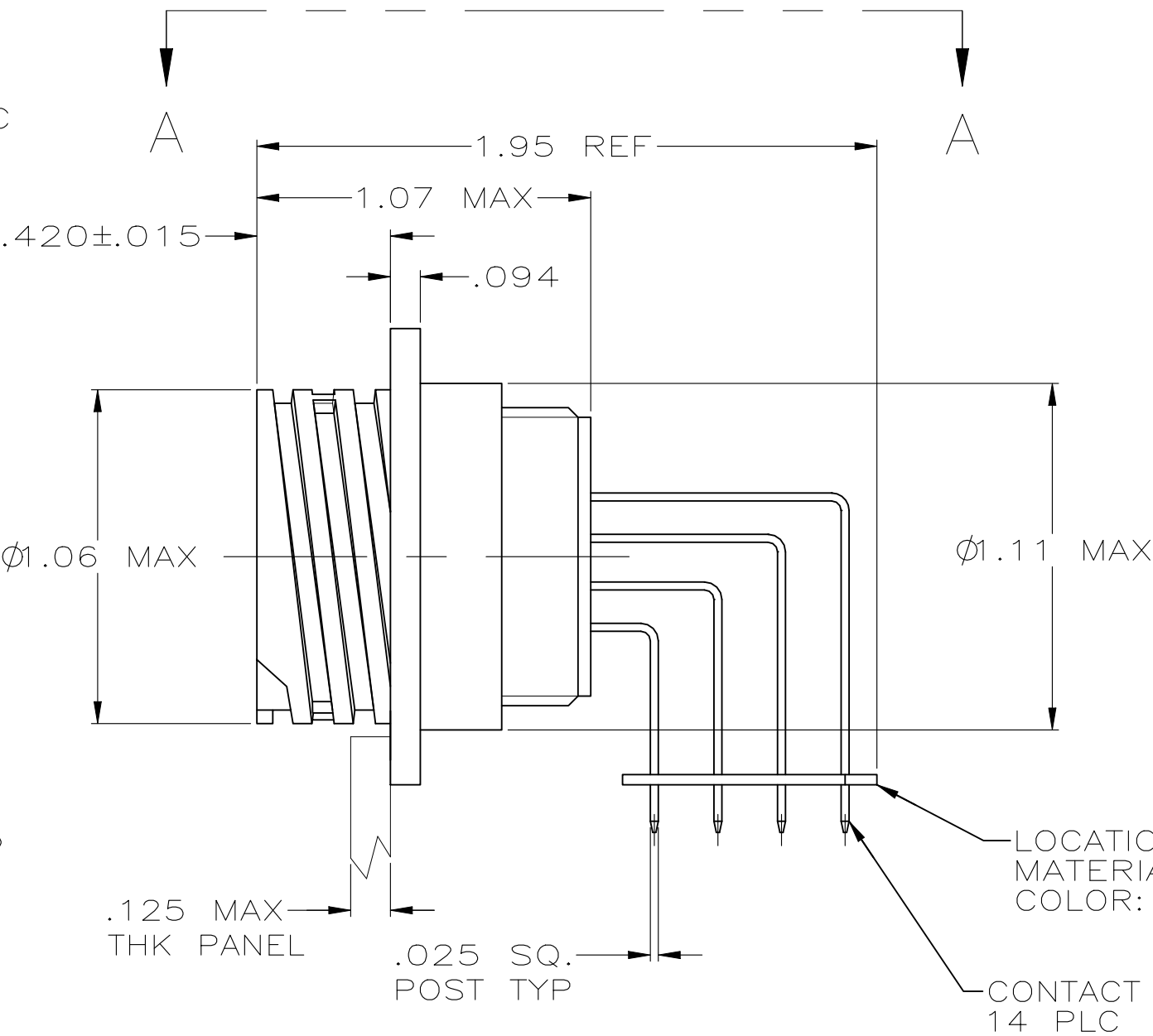
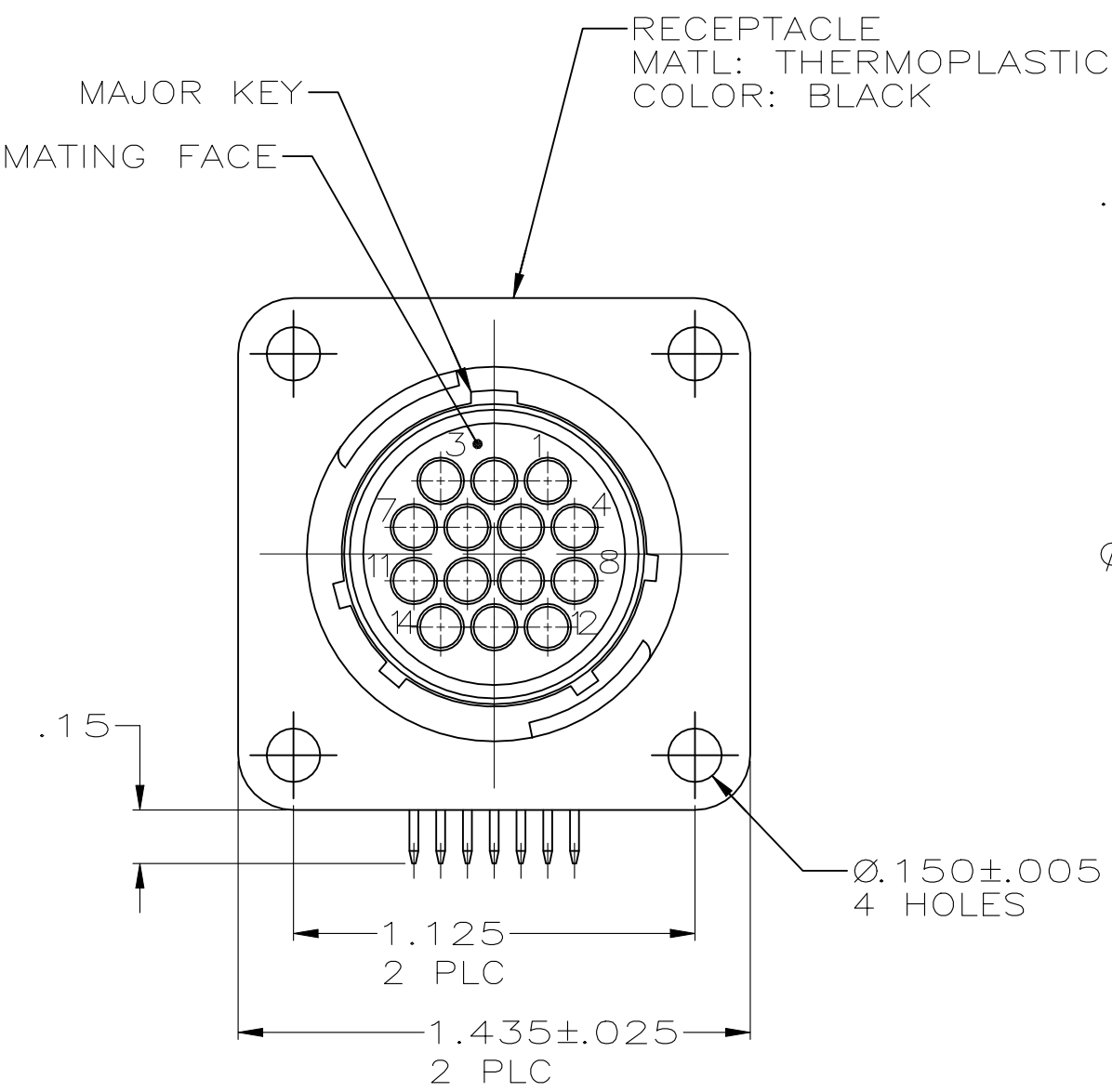


REVISIONS					
P	LTR	DESCRIPTION	DATE	DWN	APVD
	D2	REVISE PER ECR-22-150475	26AUG2022	RK	MZ



RECOMMENDED
PANEL CUTOUT

	7	796348-6
	6	796348-5
OBSOLETE	4	796348-2
OBSOLETE	3	796348-1
CONTACT FINISH		PART NUMBER

- CONTACT CAVITIES IDENTIFIED BY CHARACTERS ON FRONT AND REAR FACES OF CONNECTOR.
- #6 FASTENER RECOMMENDED FOR MOUNTING.
- CONTACT BODY: .000100 MIN TIN-LEAD OVER .000050 MIN NICKEL.
CONTACT POST: .000100 MIN TIN-LEAD OVER .000100 MIN COPPER.
- CONTACT BODY: .000030 MIN GOLD FOR A LENGTH OF .200 MIN FROM MATING END, WITH REMAINDER TO BE GOLD FLASH, BOTH OVER .000050 MIN NICKEL.
CONTACT POST: .000100 MIN TIN-LEAD OVER .000100 MIN COPPER.
- PC BOARD HOLE PATTERN IS DEFINED RELATIVE TO CONNECTOR t AND PANEL MOUNTING FACE INDICATED.
- CONTACT BODY: .000030 MIN GOLD FOR A LENGTH OF .200 MIN FROM MATING END, WITH REMAINDER TO BE GOLD FLASH, BOTH OVER .000050 NICKEL
CONTACT POST: .000100 MIN TIN OVER .000100 MIN COPPER.
- CONTACT BODY: .000100 MIN TIN OVER .000050 MIN NICKEL.
CONTACT POST: .000100 MIN TIN OVER .000050 MIN NICKEL.

THIS DRAWING IS A CONTROLLED DOCUMENT.		DWN	HAMNER	3-10-00	TE Connectivity		
		CHK	M.CHACKO	3-21-00			
		APVD	M.CHACKO	3-21-00	NAME		
		PRODUCT SPEC			RECEPTACLE ASSY, POSTED, RT ANGLE, RVS SEX, SIZE 17-14, SERIES 1, CPC		
		APPLICATION SPEC			-		
		WEIGHT			SIZE	CAGE CODE	DRAWING NO
		-			A2	00779	C=796348
		CUSTOMER DRAWING			SCALE	SHEET	REV
					2/1	1 of 1	D2