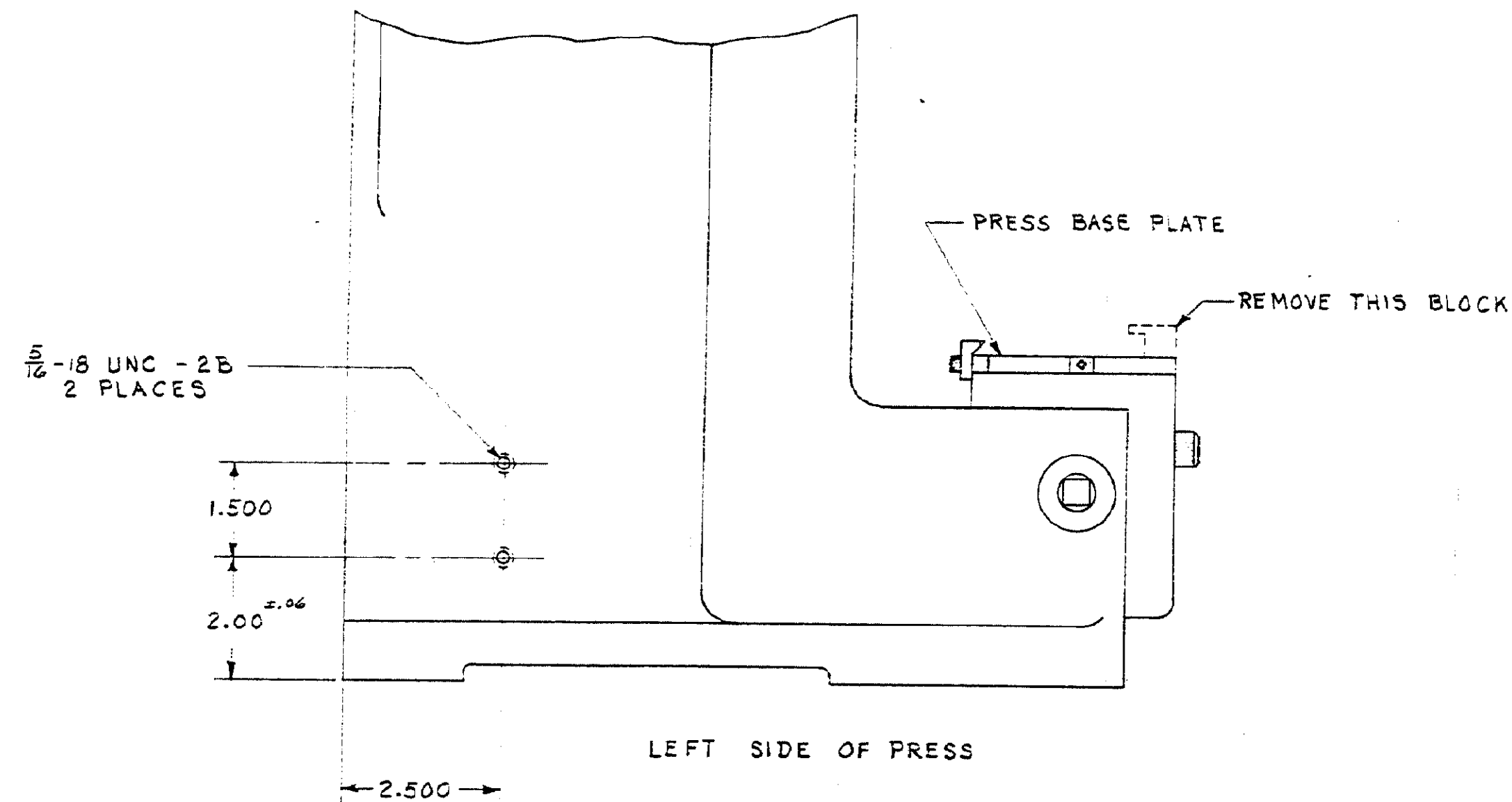
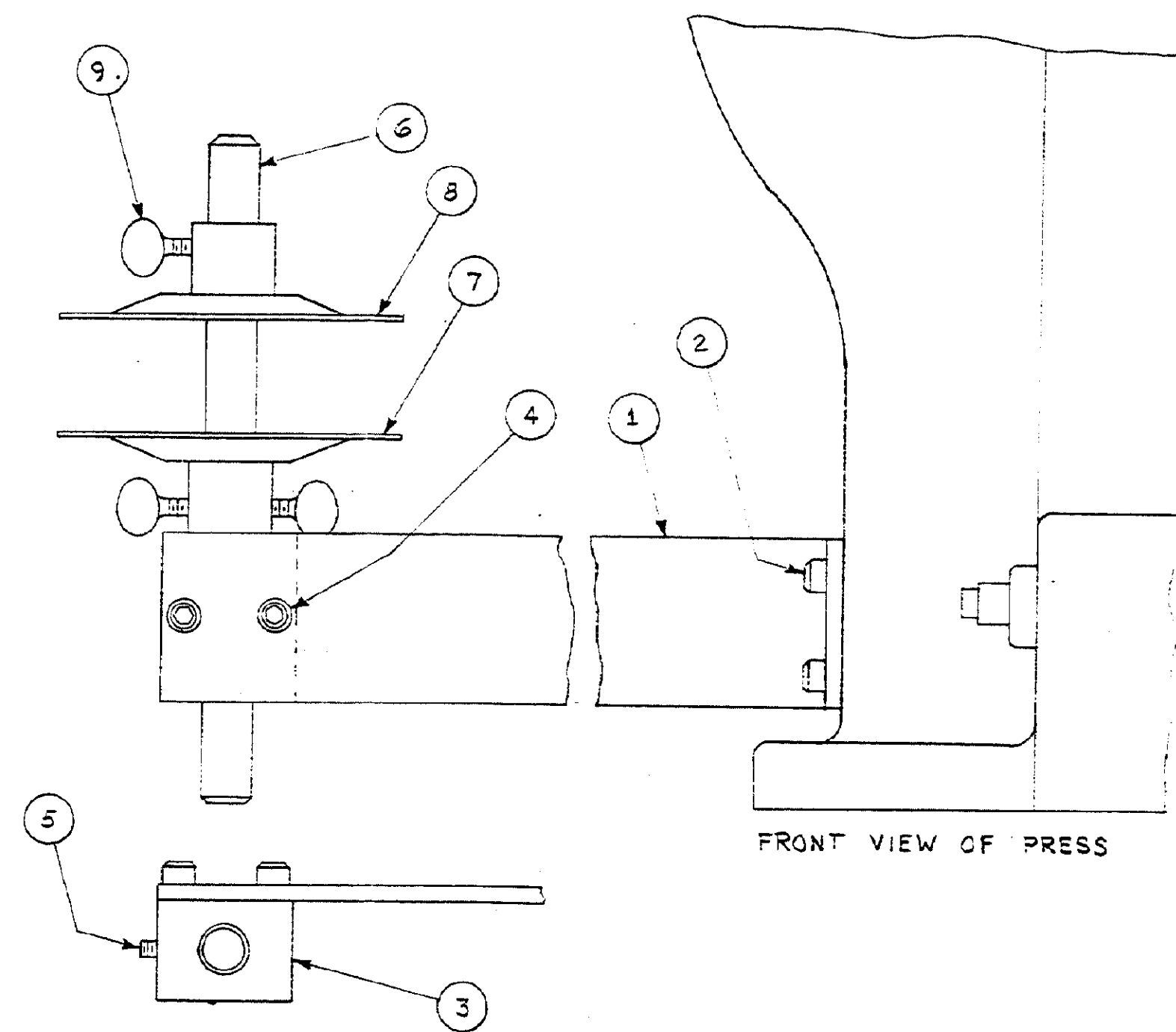


USED ON	NEXT ASSY



MODIFY PRESS FRAME AS SHOWN



HORIZONTAL REEL SUPPORT

ITEM NO	NUMBER	NAME	REMARKS
3	BA 22578-6	SCREW, THUMB WING	9
1	B 465520-1	FLANGE, SUB ASSEMBLY	3
1	B 452657-1	FLANGE, SUB ASSEMBLY (MOD.)	7
1	A 452614-1	SHAFT, REEL	6
1	5B 1-21007-0	SCREW, SOC. SET 1/4-20 UNC X 1.00 LG.	5
2	5A 1-21001-8	SCREW, SOC. HD. CAP 5/16-18 UNC X .75 LG	4
1	A 452613-1	BLOCK, REEL SHAFT	3
2	3A 1-21001-6	SCREW, SOC. HD. CAP 5/16-18 UNC X .50 LG.	2
1	B 452612-1	ARM, REEL SUPPORT	1

B REACTIVATE JACK L-5302 A OBSOLETE EQUIPMENT		692613		REQUIRED PER ASSEMBLY 3/11/67 5-31-67		MATERIAL AND FINISH CLASS WIRE - RANGE - INSULATION TYPE TOLERANCE EXCEPT AS NOTED SCALE 1:2 LOC A		AMP INCORPORATED HARRISBURG, PENN. CLASS REEL BRACKET ASSEMBLY DRAWING	
LTR REVISION RECORD OR CHG DATE		DESCRIPTION		692613		10		1	

DIMENSIONS IN INCHES DO NOT SCALE PRINT