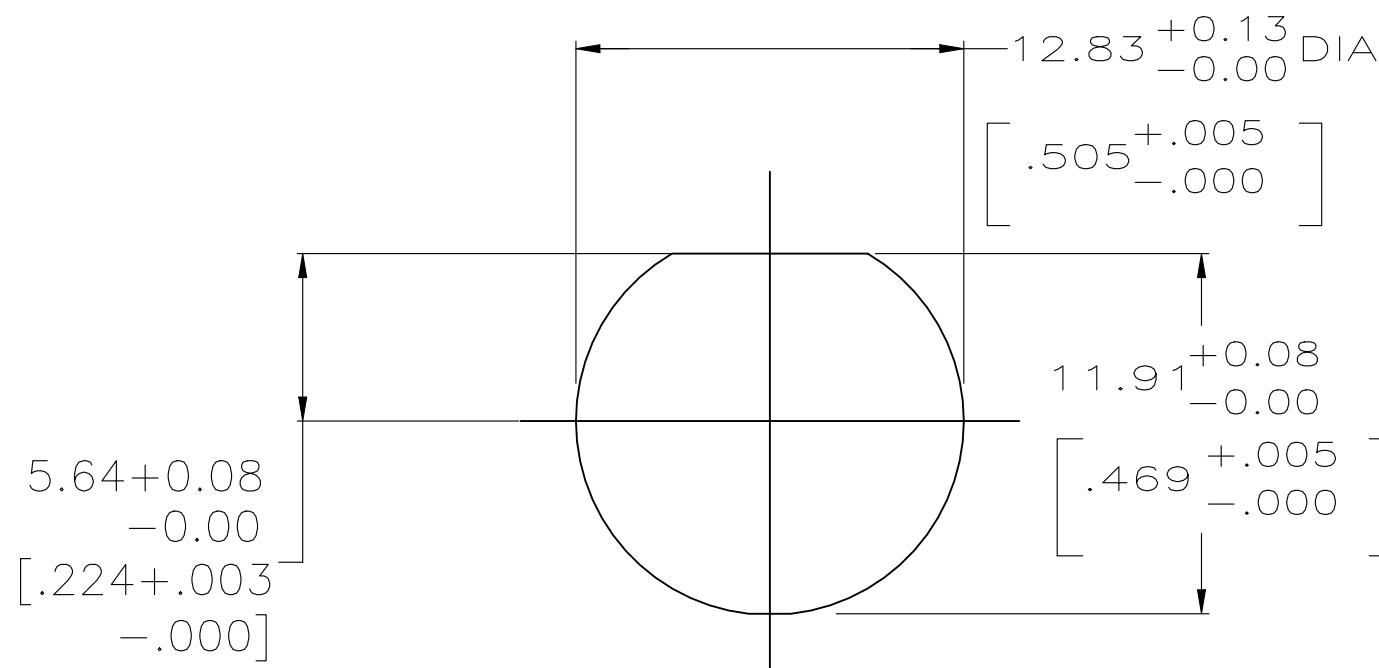
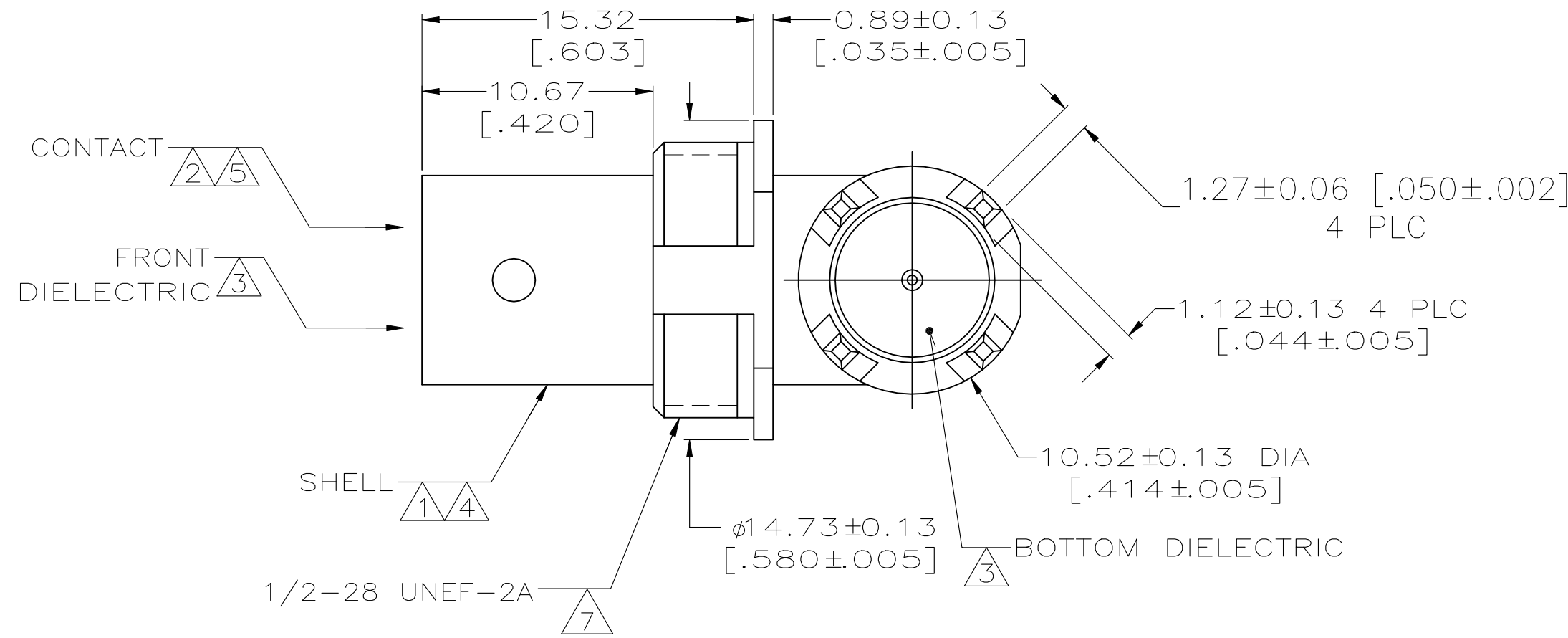
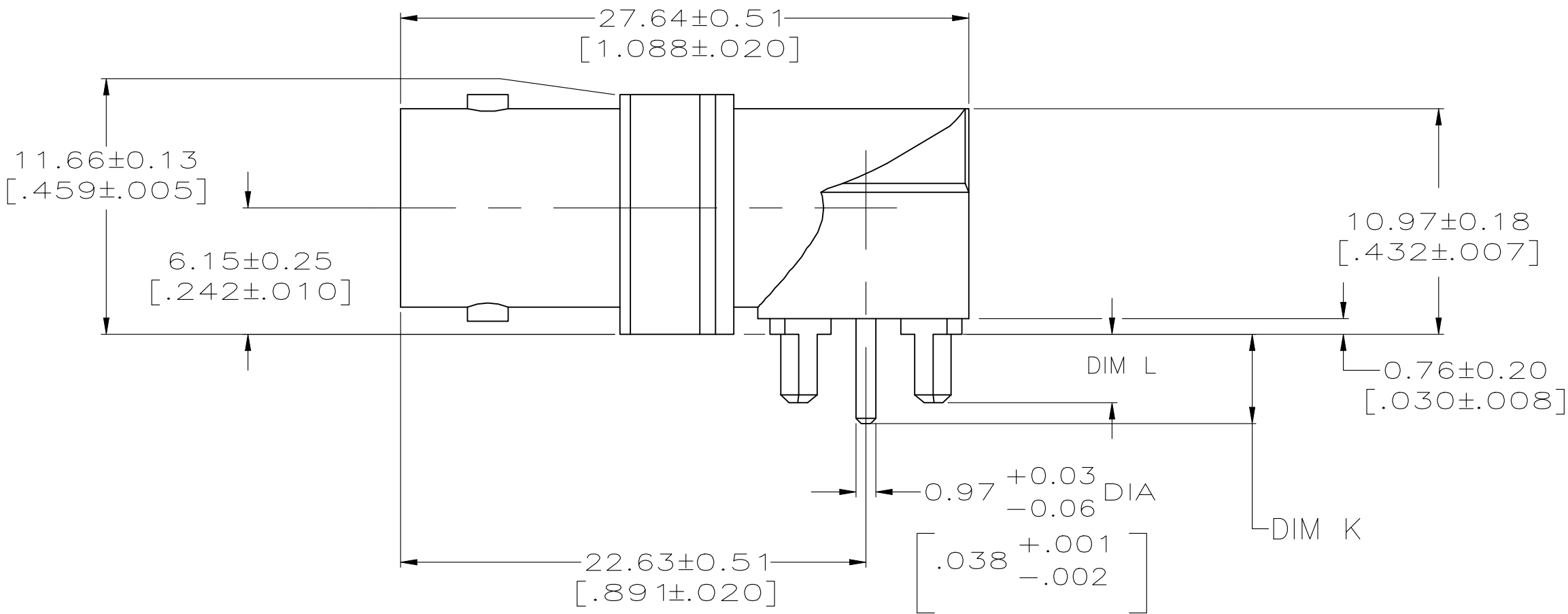
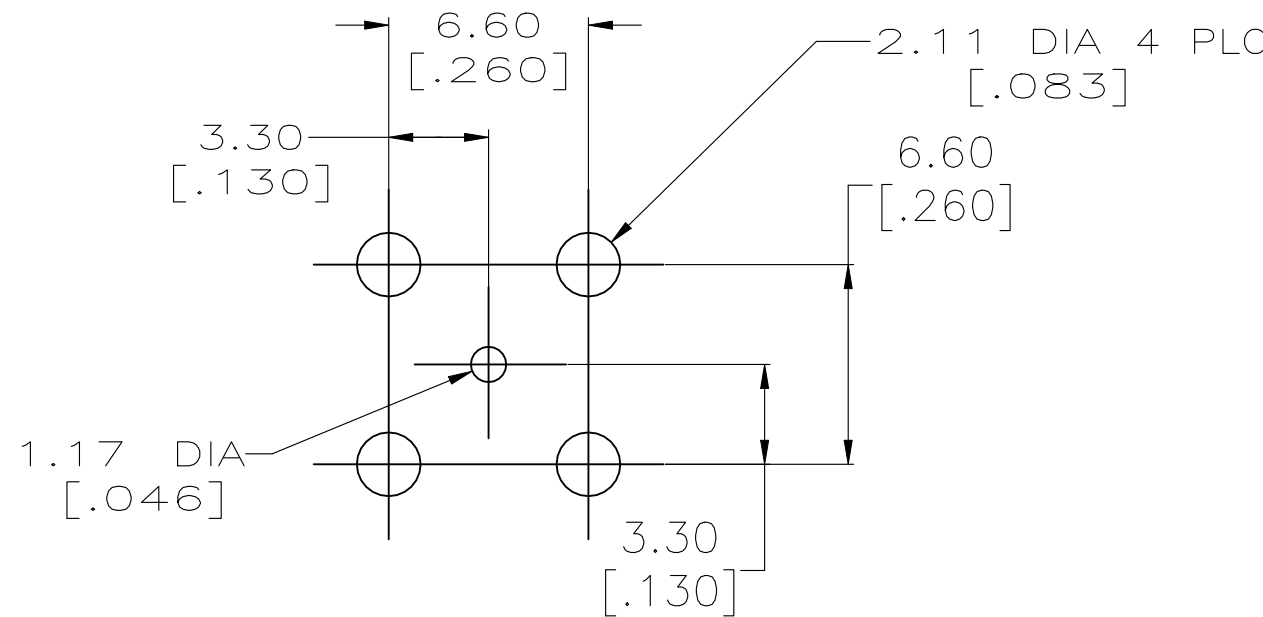


| REVISIONS | | | | | |
|-----------|-----|---------------|-----------|-----|------|
| P | LTR | DESCRIPTION | DATE | DWN | APVD |
| | B5 | ECR-23-187177 | 15SEP2023 | SS | WH |



RECOMMENDED PANEL CUTOUT

- 1 ZINC PER QQ-Z-363.
- 2 BERYLLIUM COPPER PER QQ-C-530.
- 3 PTFE PER MIL-P-19468.
- 4 TIN PLATE PER ASTM B 545, $3.81 \mu\text{m}$ [$.000150$] MIN THICK.
- 5 GOLD PLATE PER MIL-G-45204, $0.76 \mu\text{m}$ [$.000030$] MINIMUM THICK.
- 6. INTERFACE PER MIL-C-39012.
- 7 MODIFIED MAJOR DIAMETER TO 12.29 [$.484$].



PCB CONFIGURATION

| | | | |
|----------|---|---|-------------|
| OBSOLETE | 4.34 ± 0.38 [$.171 \pm 0.015$] | 4.34 ± 0.38 [$.171 \pm 0.015$] | 6274425-4 |
| OBSOLETE | $2.44 + 0.00 / 0.23$ [$.096 + 0.000 - 0.009$] | $2.44 + 0.00 / 0.23$ [$.096 + 0.000 - 0.009$] | 6274425-3 |
| | 3.33 ± 0.20 [$.131 \pm 0.008$] | 4.34 ± 0.38 [$.171 \pm 0.015$] | 6274425-2 |
| | DIM L | DIM K | PART NUMBER |

| | | | | | |
|--|--|-----------------------------|-------------------------------------|--|--|
| THIS DRAWING IS A CONTROLLED DOCUMENT. | | DWN L. VARELA - 02FEB2005 | TE Connectivity | | |
| DIMENSIONS: mm [INCHES] | | CHK J. HAVENER - 02FEB2005 | | | |
| | | APVD J. LIPPERT - 02FEB2005 | NAME | | |
| | | PRODUCT SPEC | JACK, RIGHT ANGLE, 75 OHM, PCB, BNC | | |
| TOLERANCES UNLESS OTHERWISE SPECIFIED: | | APPLICATION SPEC | | | |
| 0 PLC ± - | | — | | | |
| 1 PLC ± - | | — | | | |
| 2 PLC ± 0.08 [.003] | | — | | | |
| 3 PLC ± - | | — | | | |
| 4 PLC ± - | | — | | | |
| ANGLES ± - | | — | | | |
| FINISH | | WEIGHT | | | |
| SEE NOTES 1 - 4 | | — | | | |
| SEE NOTES 5, 6 | | CUSTOMER DRAWING | | | |
| | | SCALE 4:1 | | | |
| | | SHEET 1 OF 1 | | | |
| | | REV B5 | | | |