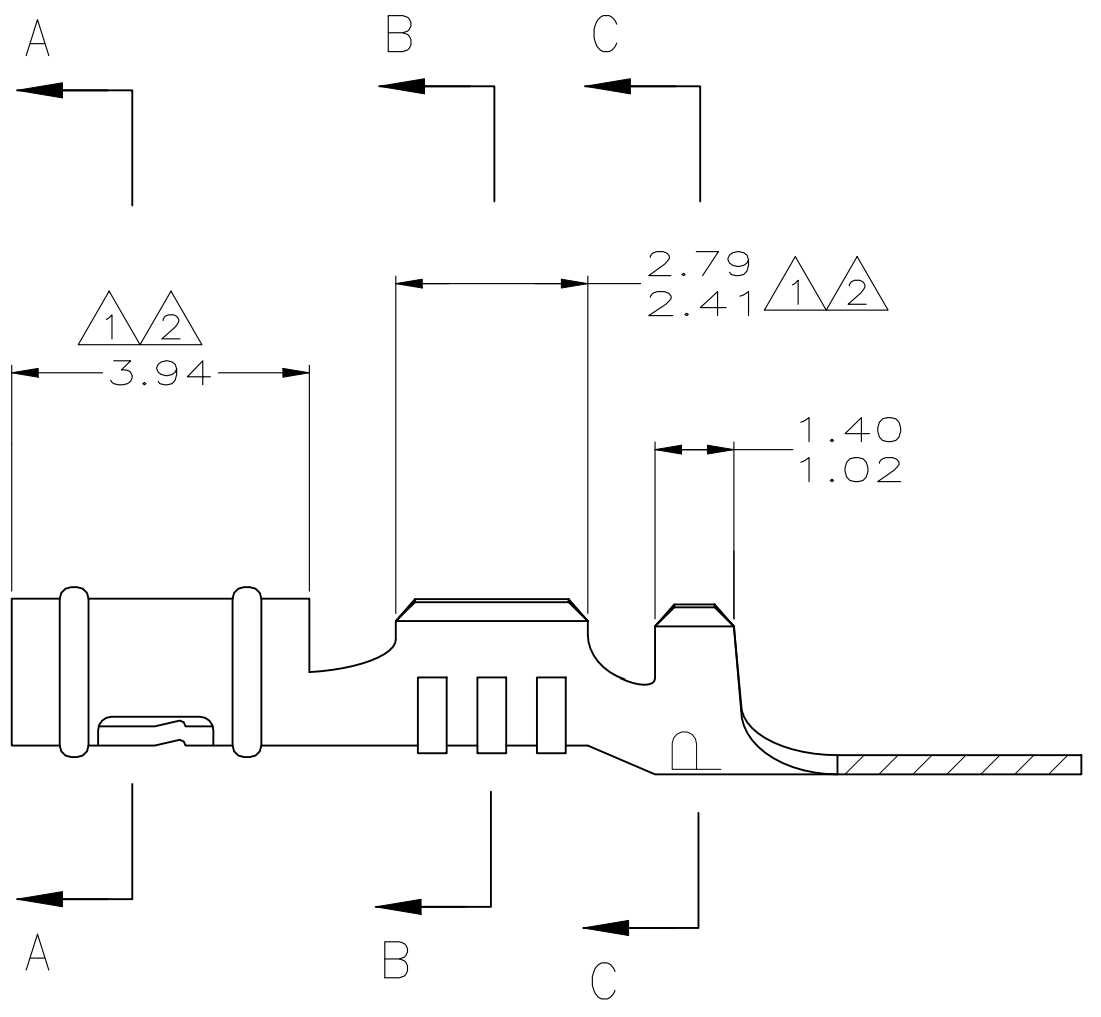
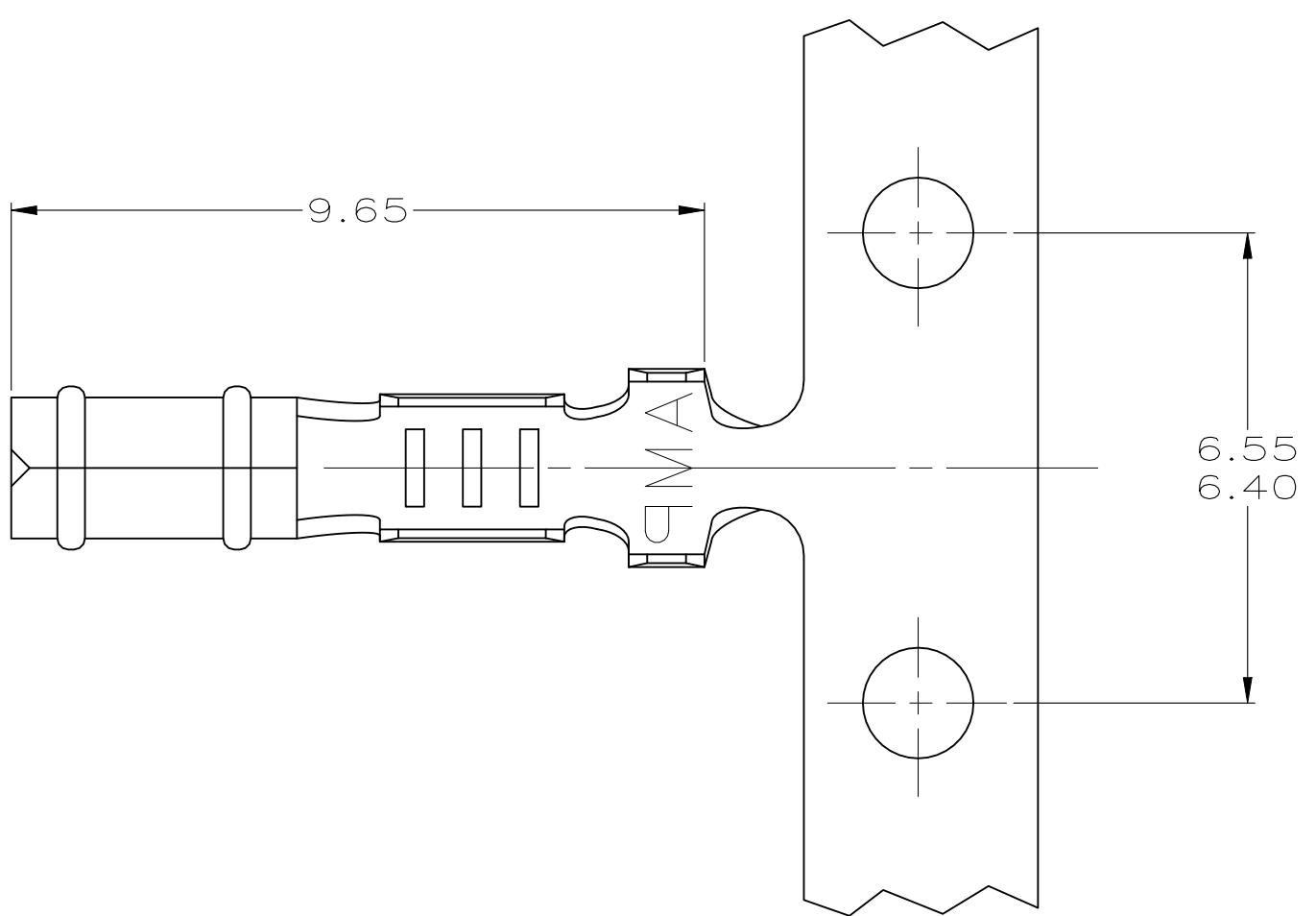


D

C

B

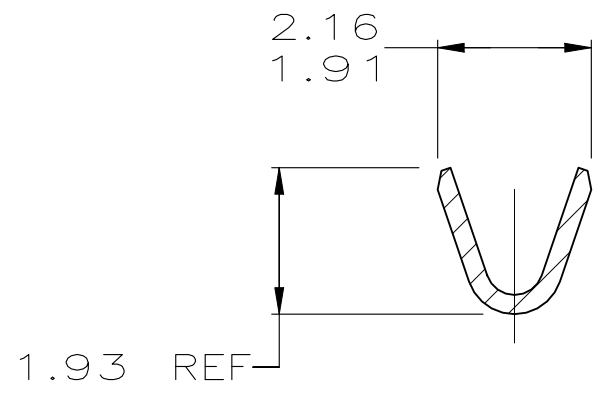
A



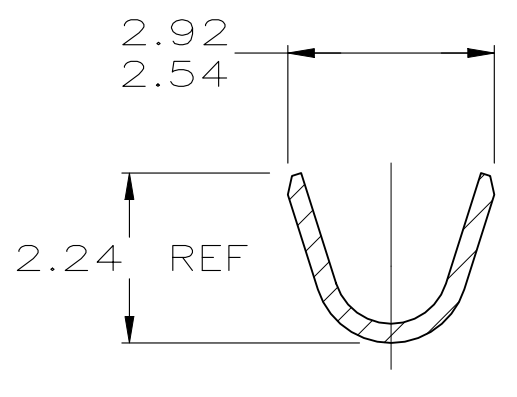
- 1. 0.00038 MIN SELECTIVE GOLD PLATING ON INSIDE OF RECEPTACLE AND WIRE BARREL OVER NICKEL OVER ALL UNDERPLATE.
- 2. 0.00076 MIN SELECTIVE GOLD PLATING ON INSIDE OF RECEPTACLE AND WIRE BARREL OVER NICKEL OVER ALL UNDERPLATE.
- 3. WIRE RANGE: 0.2 – 0.6 MM<sup>2</sup> (24 – 20 AWG)
- 4. INSULATION RANGE: 1.14 – 1.78
- 5. REVERSED REELED.



SECTION A-A



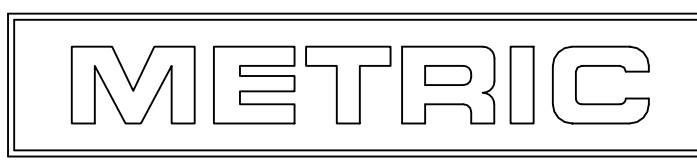
SECTION B-B



SECTION C-C

5	1	0.25 BE CU	60598-9
	1	0.25 BE CU	60598-8
	2	0.25 PH BRZ	60598-7
5	1	0.25 PH BRZ	60598-6
5	2	0.25 PH BRZ	60598-5
	MATTE TIN	0.25 BE CU	60598-4
	PRE-TIN	0.25 PH BRZ	60598-3
5	MATTE TIN	0.25 BE CU	60598-2
5	PRE-TIN	0.25 PH BRZ	60598-1
	FINISH	MATERIAL	PART NUMBER

1.14	.045	1.91	.075	2.79	.110	-	-
1.02	.040	1.78	.070	2.54	.100	9.65	.380
0.25	.010	1.486	.0585	2.41	.095	6.55	.258
0.13	.005	1.47	.058	2.24	.088	6.40	.252
0.00076	.000030	1.40	.055	2.16	.085	3.94	.155
0.00038	.000015	1.359	.0535	1.93	.076	2.92	.115
MM	IN	MM	IN	MM	IN	MM	IN
CONVERSION TABLE							



THIS DRAWING IS A CONTROLLED DOCUMENT.

DIMENSIONS:  
mm

MATERIAL  
SEE TABLE

TOLERANCES, UNLESS OTHERWISE SPECIFIED:

0 PLC ± -  
1 PLC ± -  
2 PLC ± 0.13  
3 PLC ± -  
4 PLC ± -  
ANGLES ± -  
FINISH

SEE TABLE

DWN  
T. BECK  
5-08-97

CHK  
R. SWING  
5-08-97

APVD  
A. BEDDICK  
8-22-97

PRODUCT SPEC  
108-1025

APPLICATION SPEC  
114-1008

WEIGHT  
-

CUSTOMER DRAWING

NAME  
RECEPTACLE, .058 DIAMETER,  
24-20 AWG, .045-.070  
INSULATION, P.C. CONTACT

SIZE  
A2

CAGE CODE  
00779

DRAWING NO  
C-60598

RESTRICTED TO  
-

SCALE  
10:1

SHEET  
1 OF 1

REV  
AH2

D

C

B

A