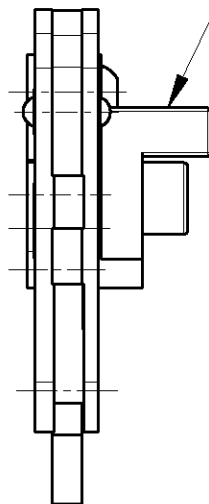
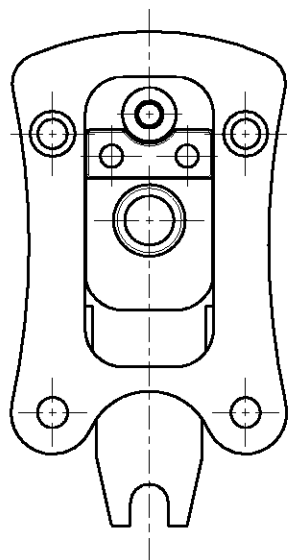
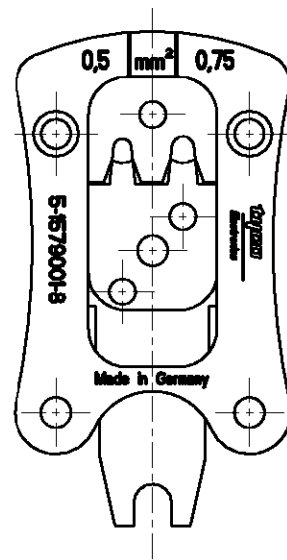


LOC	DIST	REVISIONS					
		P	LTR	DESCRIPTION	DATE	DWN	APVD
A1	—						
			A1	ECR-11-013843	04JUL11	LS	LB

CRIMP HEAD FOR MQS TERMINALS 0,5 and 0,75 mm² (SWS)
Crimpkopf fuer MQS-Kontakte 0,5 and 0,75 mm² (EDS)




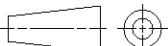
KontaktLocator unter PN 9-1579005-3
als Ersatzteil erhaeltlich
Terminal locator PN 9-1579005-3
as spare part available



Kontakt	DGB (mm ²)	Drahtcrimp / Wire Crimp		Isolationscrimp / Insulationcrimp		Isol.Ø	Betriebsanl.
Contact	Wire Range	Hoehe/Height mm	Breite/Width mm	Hoehe/Height mm	Breite/Width mm	Ins.Range	Instr.Sheet
965907/965909	0.50	0.93 ±0,03	1,40	2,90	2,90 0	1,4-1,6	411-18297
	0.75	1.07 ±0,03				1,7-1,9	

Crimphhead used in combination with handles CSV10 Vario short. PN 2-1579005-1
Crimpkopf in Kombination mit Griff CSV10 Vario kurz. PN 2-1579005-1 verwenden

Processing of terminals according to application specification 114-18025
Verarbeitung der Kontakte nach Verarbeitungsspezifikation 114-18025

DIMENSIONS:		DWN	14NOV2006	MATERIAL	-	FINISH	-
mm		Ch.Witt	-	 TE Connectivity			
TOLERANCES UNLESS OTHERWISE SPECIFIED:		CHK	-				
0 PLC ±		APVD	-	NAME CRIMP HEAD CSV10, MQS 0.5-0.75SQ.MM			
1 PLC ±		PRODUCT SPEC	-				
2 PLC ±		APPLICATION SPEC	-	SIZE	CAGE CODE	DRAWING NO	RESTRICTED TO
3 PLC ±		WEIGHT	95 g	A 4	00779	©-5-1579001-8	-
4 PLC ±		CUSTOMER DRAWING					
ANGLES ±°		SCALE		1:1	SHEET		1 OF 1
		REV		A1			