

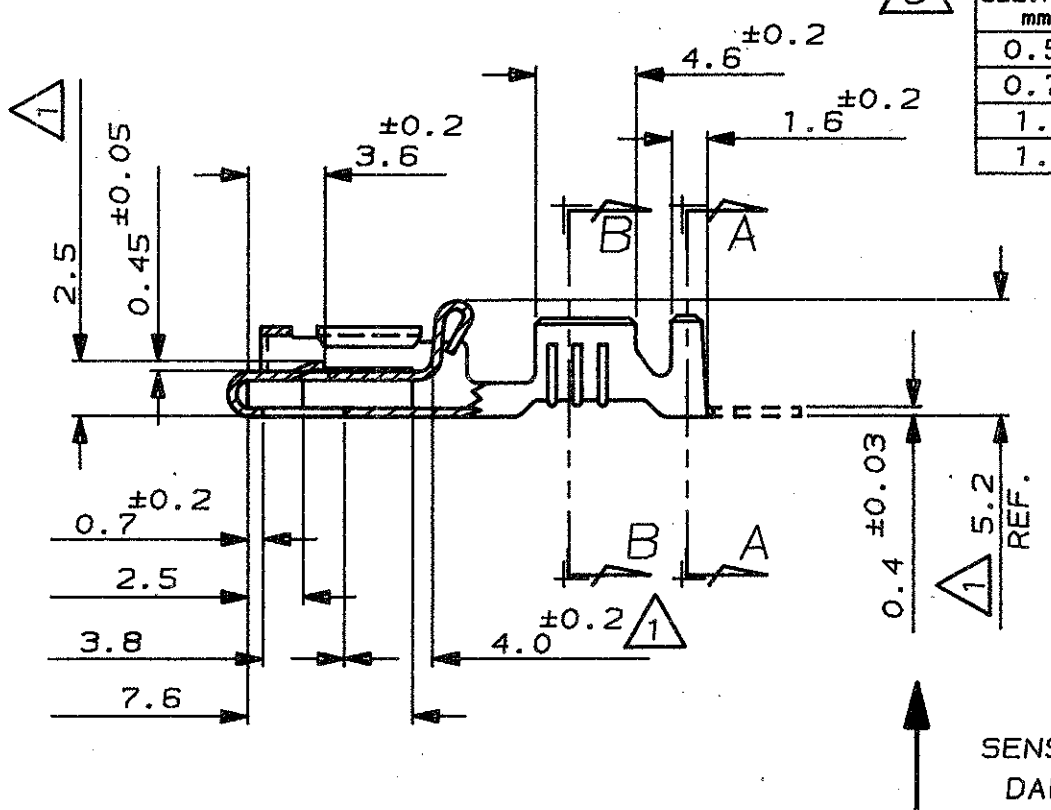
(WIRE) SEZ.FILO mm ²	(INS.DIA.STD) Ø ISOL.STD	(INS.DIA.REDUCED) Ø IS.RID.FASE 3
0.50	--	1.5-1.7
0.75	--	1.7-1.9
1.0	--	1.9-2.1
1.5	--	2.2-2.4

SCALA NON IMPEGNATIVA
(DO NOT SCALE)
DIMENSIONI IN mm
(DIMENSIONS IN mm)

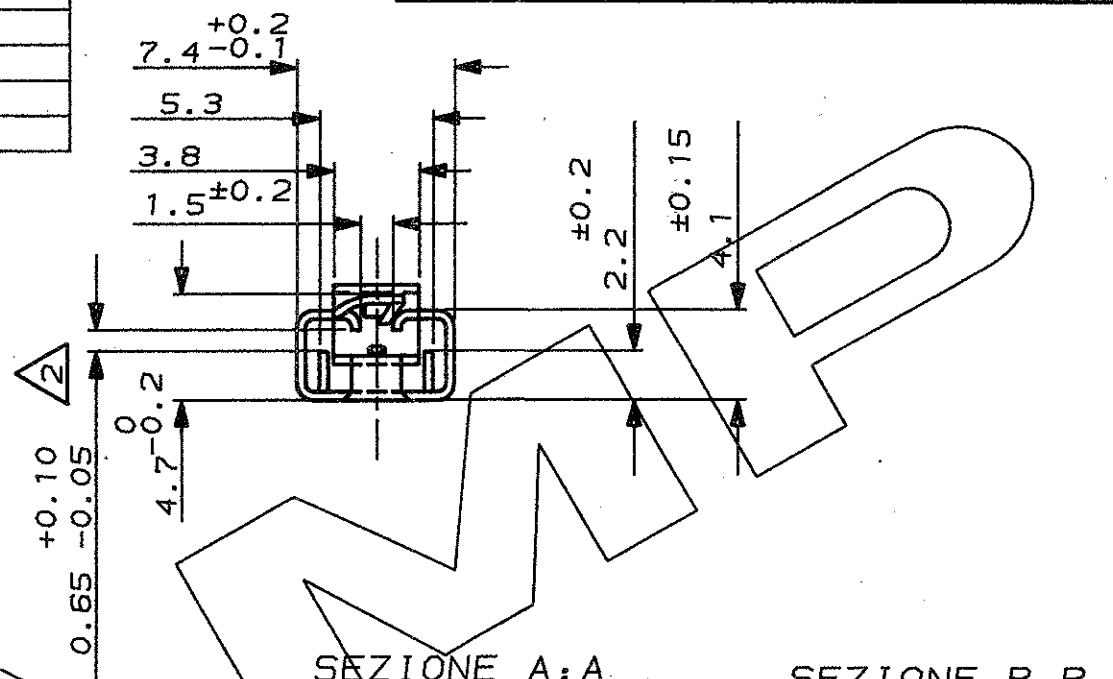
METRIC

PROIEZIONE EUROPEA
(EUROPEAN PROJECTION)

A
B
C
D
E

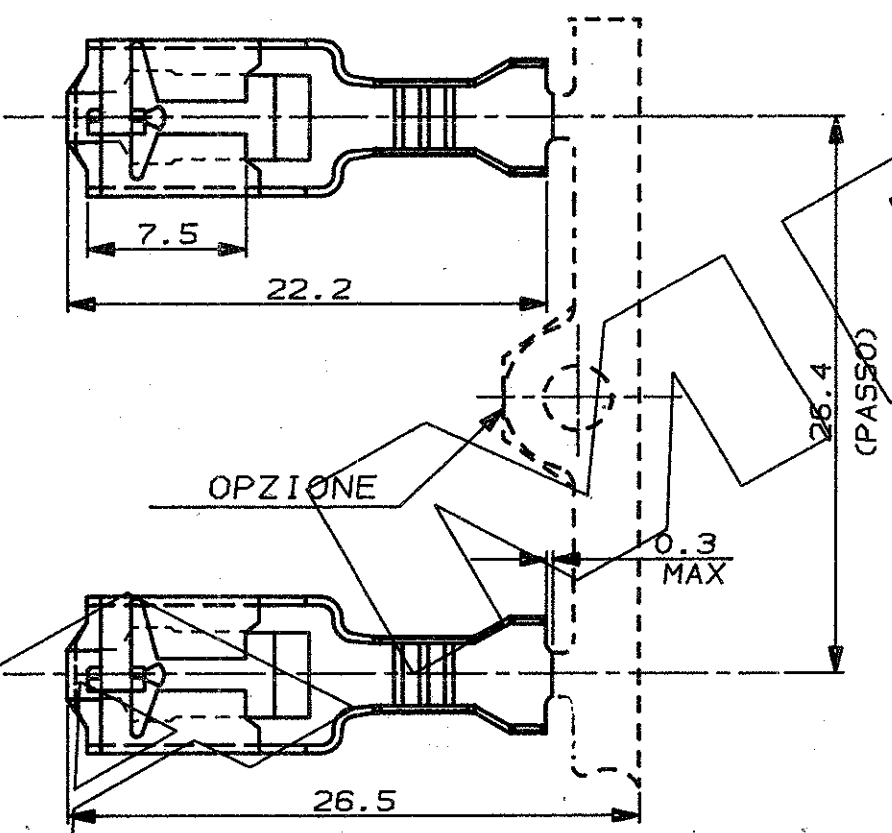
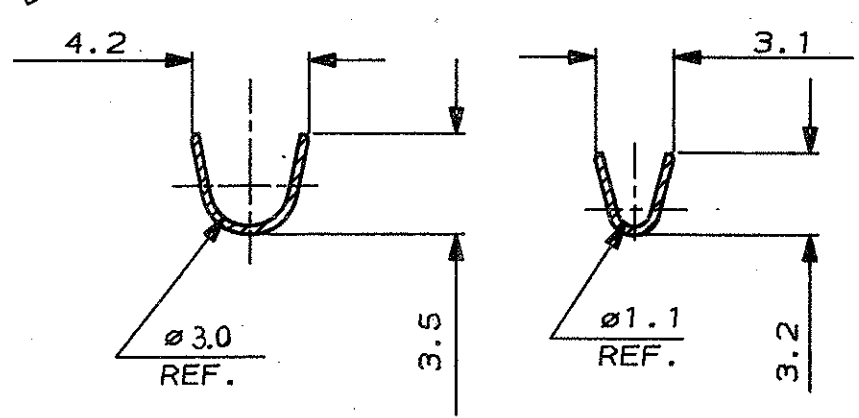


SENSO DI USCITA
DALLA BOBINA



SEZIONE A:A

SEZIONE B:B



- NOTE:
- 1 DA MISURARSI CON LA MOLLA IN POSIZIONE ORIZZONTALE
 - 2 ADATTO PER TERMINALE MASCHIO CON FORO, SECONDO TABELLA FIAT 91319 FOGLIO 2 (TIPO A)
 - 3 PRELIMINARY: C27400 AS ALTERNATIVE MATERIAL
 - 4 ONLY WELDED SPLICES ALLOWED

STAGNATO		OTTONE OT 70		282162-1	
FINITURA / COLORE (FINISH / COLOUR)		MATERIALE (MATERIAL)		NUMERO (PART NUMBER)	
CUSTOMER DWG. FOR REFERENCE ONLY			DISEGNO PER CLIENTE SOLO PER RIFERIMENTO		
THIS DRAWING IS UNPUBLISHED			RELEASE FOR PUBLICATION		
COPYRIGHT 1992 BY AMP INCORPORATED, HARRISBURG, PA. ALL INTERNATIONAL RIGHT RESERVED AMP PRODUCTS MAY BE COVERED BY U.S. AND FOREIGN PATENT AND/OR PATENT PENDING					
TOLLERANZE, SE NON DIVERSAMENTE SPECIFICATO (TOLERANCES, UNLESS OTHERWISE SPECIFIED)			DIAH. ISOLANTE (INS. DIA. RANGED)		SCALA (SCALE)
±0.3 ± 2°			1.5-2.4 DIA		0.5-1.5 mm ²
ANGOLI (ANGLES)			TE Connectivity		
DIS. VERGANO P. (COR.) 3 OCT.90			DESCRIZIONE (DESCRIPTION) POSITIVE LOCK REC. MARK I WITH ANTIOVERSTRESS		
ERA 90-51123			LOC. SIZE NUMERO (CNS NO) C-282162		
REVISIONI (REVISION RECORD)			REV. A2		
DIS. DATA (COR.)			FOGLIO (SHEET) 01		