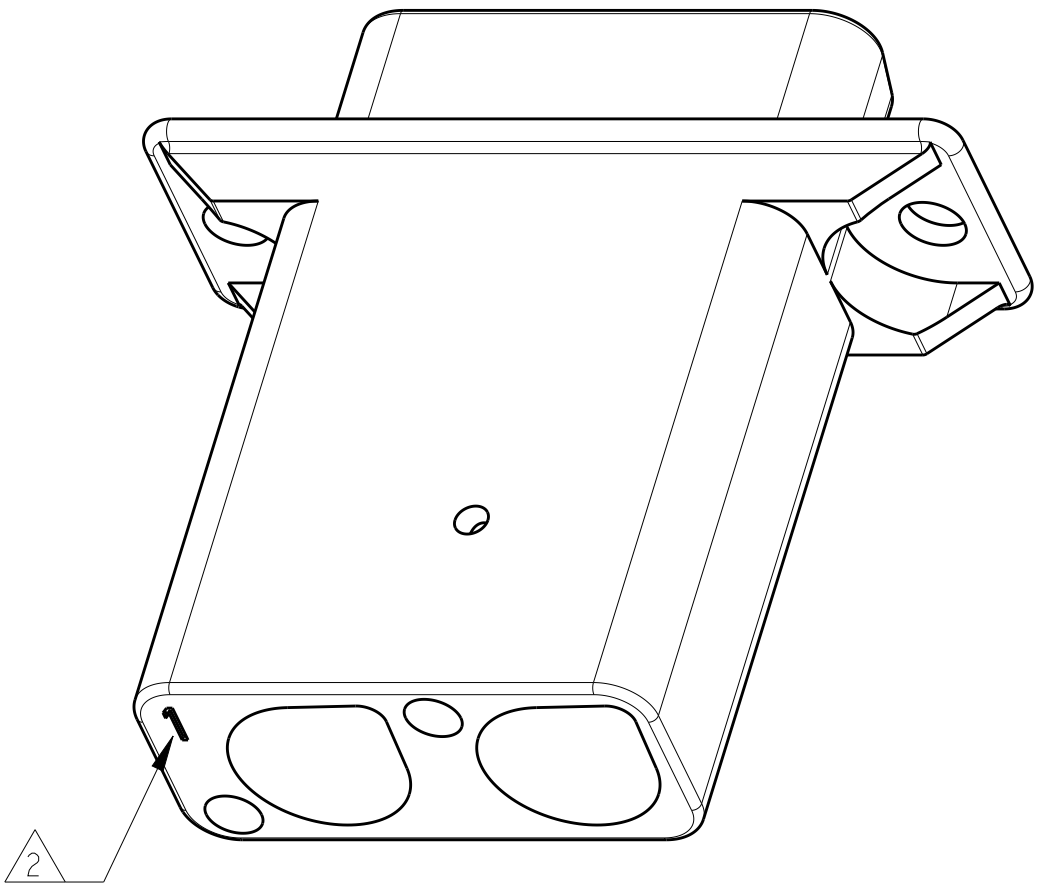
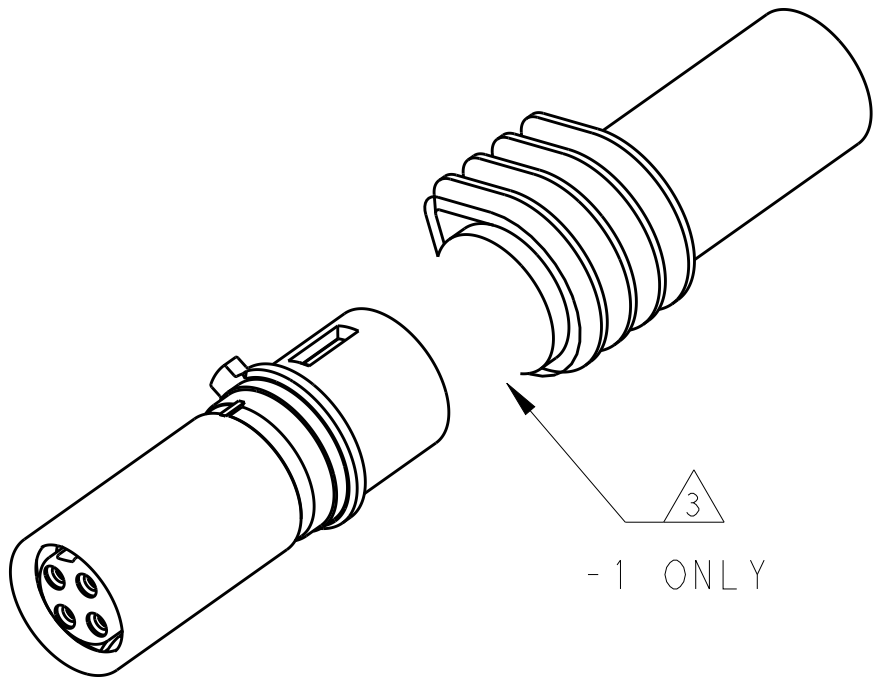
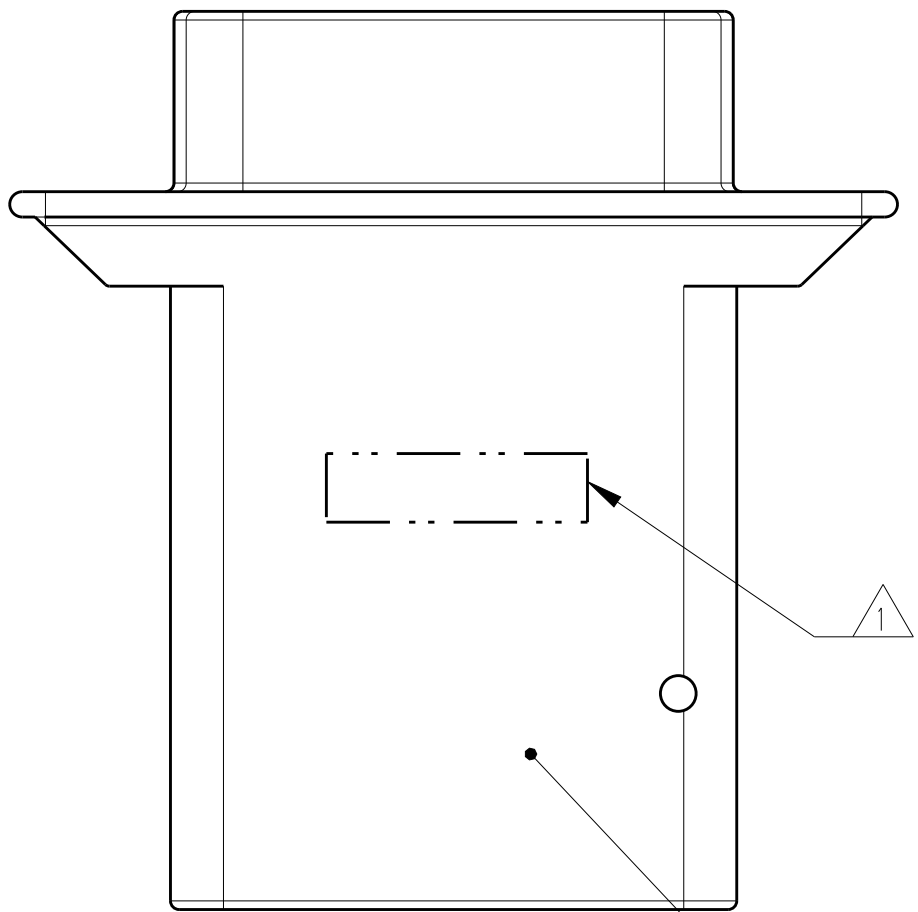
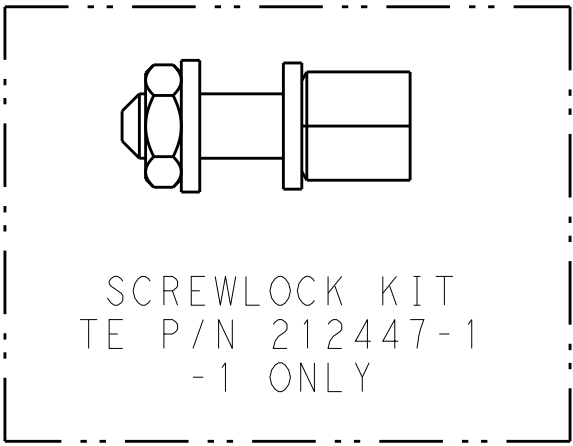
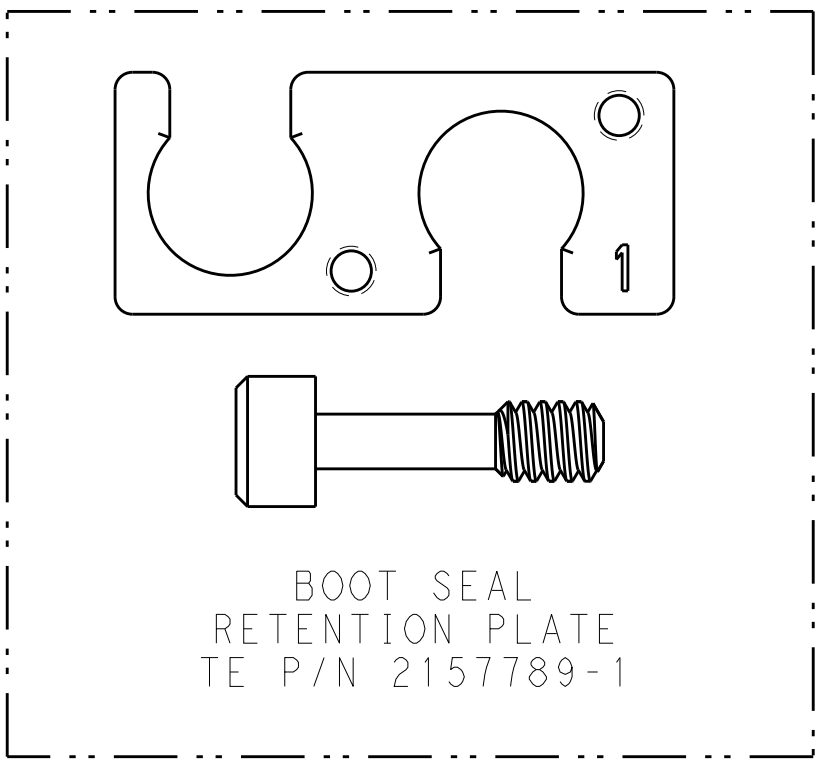
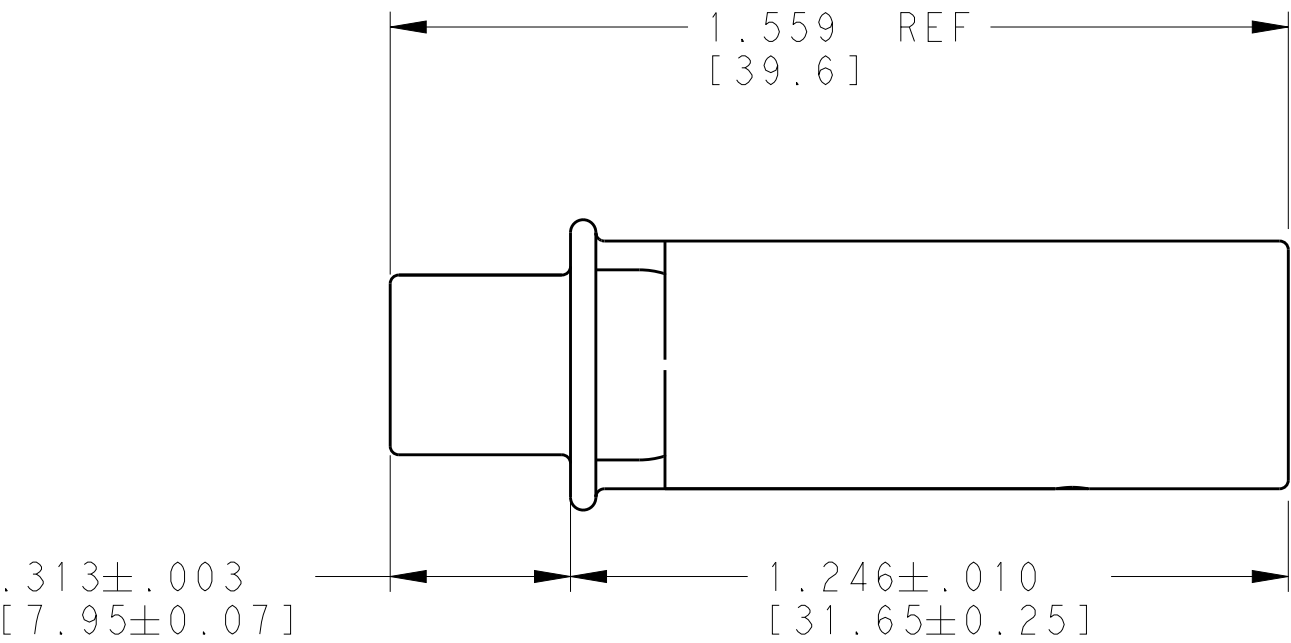
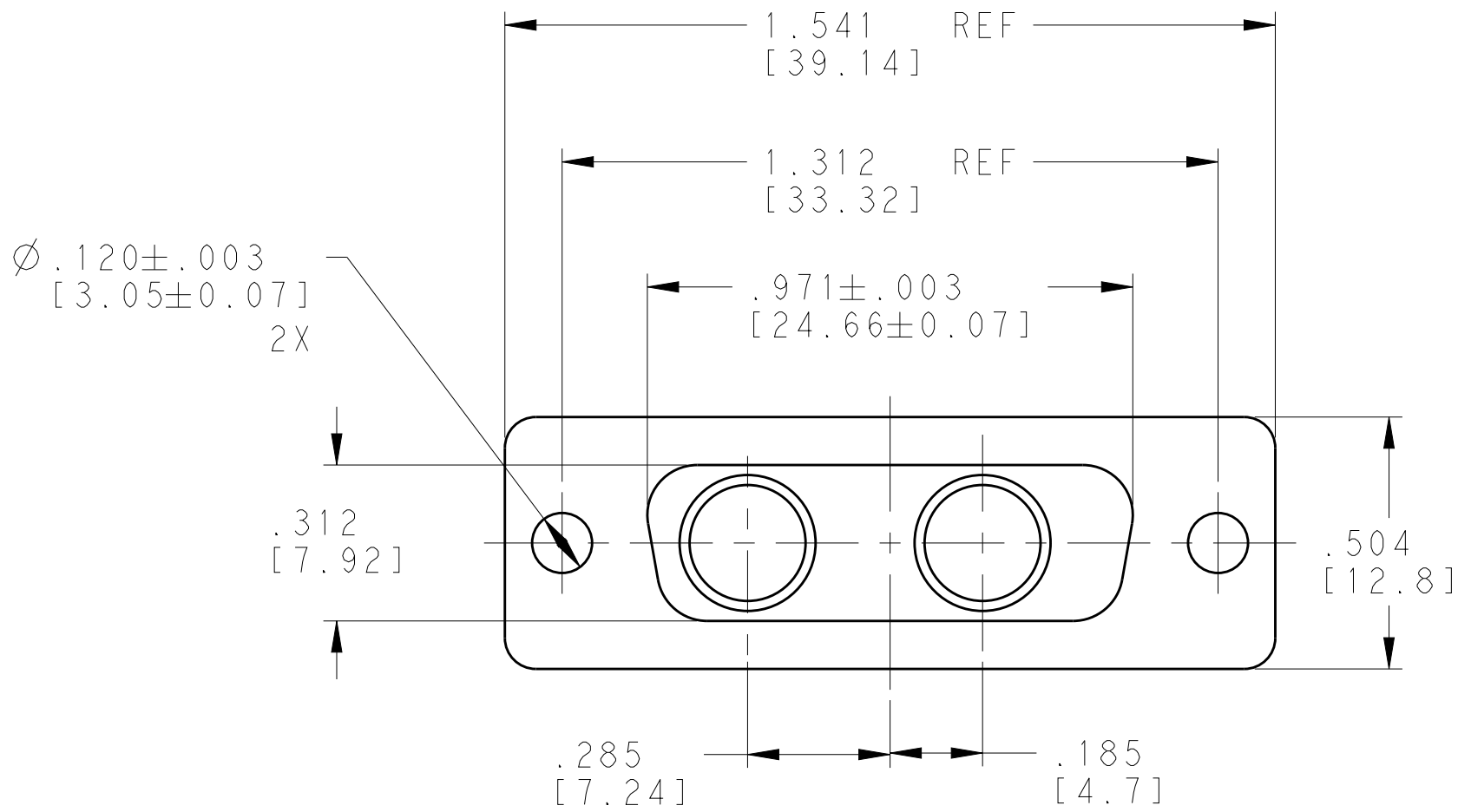



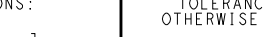
LOC		DIST		REVISIONS					
-		-		DESCRIPTION		DATE	DWN	APVD	
		P	LTR						
			B	REV PER ECO 19-017981			11-26-19	CT	DM



SHELL  
ELECTROLESS NICKEL PLATED PER AMS-C-26074 CLASS 1  
ALUMINUM ALLOY 6061-T6 PER ASTM B221  
CONTACT RETENTION CLIP QTY = 2 (ASSEMBLED INSIDE SHELL)  
STAINLESS STEEL PER UNS S30200 PER ASTM A666  
PLATED SILVER .000400 MIN THICK PER ASTM B700 OVER WOODS  
NICKEL STRIKE PER ASTM B254

- 1 CONNECTOR IS MARKED WITH TE PART NO., TE LOGO OR TE, CAGE CODE & DATE CODE IN APPROXIMATE AREA SHOWN. (EITHER SIDE)
- 2 RECESSED CIRCUIT IDENTIFICATION.
- 3 QUADRAX SOCKET ASSEMBLY SUPPLIED UNASSEMBLED TO SHELL.

2157789-1	--	--	2294317-2
2157789-1	212447-1	1445693-3	2294317-1
BOOT SEAL RETENTION KIT QTY = 1	SCREWLOCK KIT QTY = 1	CONTACT QTY = 2	ASSEMBLY PART NO

THIS DRAWING IS A CONTROLLED DOCUMENT.		DWN C.C. THOMAS CHK D. MILLER APVD D. MILLER	7-24-15 7-24-15 7-24-15	 TE Connectivity				
DIMENSIONS: [INCHES][mm]		TOLERANCES UNLESS OTHERWISE SPECIFIED:		NAME	PLUG ASSEMBLY, LOW PROFILE, 2Q2 RECTANGULAR QUADRAX KIT, SIZE 2 W/RETENTION PLATE AND SCREWLOCKS			
		0 PLC 1 PLC 2 PLC 3 PLC 4 PLC ANGLES FINISH	±. ±. ±. ±.005 (0.13) ±. ±1° -					
MATERIAL		WEIGHT		SIZE	RESTRICTED TO			
-		-		A100779C=2294317	-			
CUSTOMER DRAWING				SCALE	3:1			
				SHEET	1 OF 1			
				REV	B			