
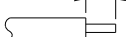




THIS DRAWING IS UNPUBLISHED.		RELEASED FOR PUBLICATION	
COPYRIGHT 20		BY TYCO ELECTRONICS CORPORATION. ALL RIGHTS RESERVED.	




PART NUMBER	REVISION	DESCRIPTION	FEED TYPE
2266100-1	D	FINE CRIMP HEIGHT ADJUST	MECHANICAL
2266100-2	D	FINE CRIMP HEIGHT ADJUST	PNEUMATIC
5-2266100-1	D	SEAL STRIPPER CRIMPER TERMINATING UNIT	MECHANICAL
5-2266100-2	D	SEAL STRIPPER CRIMPER TERMINATING UNIT	PNEUMATIC
7-2266100-1	D	MECHANICAL AND CRIMP TOOLING KIT	MECHANICAL
7-2266100-2	D	PNEUMATIC AND CRIMP TOOLING KIT	PNEUMATIC
7-2266100-7	B	CRIMP TOOLING KIT	-
7-2266100-8	B	APPLICATOR CONVERSION KIT	-

APPLICATOR DATA		
CRIMP	SIZE	TYPE
WIRE	2.29 mm [ .090 ]	F
INSUL	3.20 mm [ .126 ]	O
APPLICATOR INSTRUCTIONS 408-35042		

APPLICATOR CONVERSION KITS	
PART NUMBER	INSULATION DIAMETER RANGE
7-2266100-8	Ø3.05-3.81mm [.120-.150]
7-2266101-8	Ø2.67-3.02mm [.105-.119]
7-2266102-8	Ø2.26-2.64mm [.089-.104]
7-2266103-8	Ø1.93-2.24mm [.076-.088]
7-2266104-8	Ø1.60-1.91mm [.063-.075]

TERMINAL DATA: DEUTSCH TERMINAL		TE CRIMP SPECIFICATION	
TERMINAL NAME: STAMPED CONTACT PIN SIZE 16			
WIRE STRIP LENGTH 		INSULATION DIAMETER RANGE	
3.81-5.09 mm [1.50-.200 IN]		Ø3.05-3.81 mm [1.20-.150 IN]	
TERMINAL APPLICATION 	114-151000	-	-
SPECIFICATION	-	-	-
TERMINALS APPLIED 			
TE TERMINAL	DEUTSCH TERMINAL	TE TERMINAL	DEUTSCH TERMINAL
286505-1	1060-14-0122	286505-2	1060-14-0144
286505-3	1060-14-0177	286505-5	1060-14-1077
286505-6	1060-14-1088	286503-1	1060-16-0122
286503-2	1060-16-0144	286503-3	1060-16-0177
286503-7	1060-16-0722	286503-8	1060-16-0744
286503-9	1060-16-0777	1-286503-1	1060-16-0977
1-286503-2	1060-16-0988	1-286503-4	AT60-16-0122
1-286503-5	AT60-16-0144		

TERMINAL DATA: DEUTSCH TERMINAL		TE CRIMP SPECIFICATION	
TERMINAL NAME: STAMPED CONTACT SOCKET SIZE 16			
WIRE STRIP LENGTH 3.81-5.09 mm [1.50-.200 IN]		INSULATION DIAMETER RANGE Ø3.05-3.81 mm [1.20-.150 IN]	
TERMINAL APPLICATION SPECIFICATION		-	
TERMINALS APPLIED			
TE TERMINAL	DEUTSCH TERMINAL	TE TERMINAL	DEUTSCH TERMINAL
286506-1	1062-14-0122	286506-2	1062-14-0144
286506-3	1062-14-0177	286506-6	1062-14-1088
286506-5	1062-14-1077	286504-2	1062-16-0144
286504-1	1062-16-0122	286504-7	1062-16-0722
286504-3	1062-16-0177	286504-9	1062-16-0777
286504-8	1062-16-0744	1-286504-2	1062-16-0988
1-286504-1	1062-16-0977	1-286504-6	AT62-16-0144
1-286504-5	AT62-16-0122		

WIRE SIZE			CRIMP HEIGHT mm [INCH]		CRIMP HEIGHT REFERENCE SETTING
14 AWG			1.40+0.03/-0.05 [0.055+0.001/-0.002]		4.6
2.00mm2			1.40+0.03/-0.05 [0.055+0.001/-0.002]		4.6
1.50mm2			1.35+0.03/-0.05 [0.053+0.001/-0.002]		5.2
16 AWG			1.27+0.03/-0.05 [0.050+0.001/-0.002]		6.0
1.00mm2			1.27+0.03/-0.05 [0.050+0.001/-0.002]		6.0
18 AWG			1.24+0.03/-0.05 [0.049+0.001/-0.002]		6.2
0.75mm2			1.22+0.03/-0.05 [0.048+0.001/-0.002]		6.4



 RECOMMENDED SPARE PARTS

2 REFER TO SUPPLIED INSTRUCTION SHEET FOR CLEANING, LUBRICATION AND STORAGE OF APPLICATOR.

3 APPLY PART NUMBER 2-23419-6 LOCTITE TO THREADS OF ITEM 242.  
APPLY PART NUMBER 1-23419-5 LOCTITE TO THREADS OF ITEM 180.

4 CRIMP HEIGHT REFERENCE SETTING WAS THE SETTING USED WHEN THE APPLICATOR WAS QUALIFIED AT THE FACTORY. ADJUSTMENT MAY BE NECESSARY WHEN RUNNING APPLICATOR IN THE FIELD.

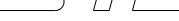

 TERMINAL LUBRICANT IS RECOMMENDED.

6. UNLESS SPECIFIED OTHERWISE TORQUE VALUES SHALL BE USED PER DOCUMENT, 101-35000.

7 SEE APPROPRIATE APPLICATOR LOG SHEETS FOR APPLIED TERMINALS, WIRE RANGE AND MEMORY CHIP.

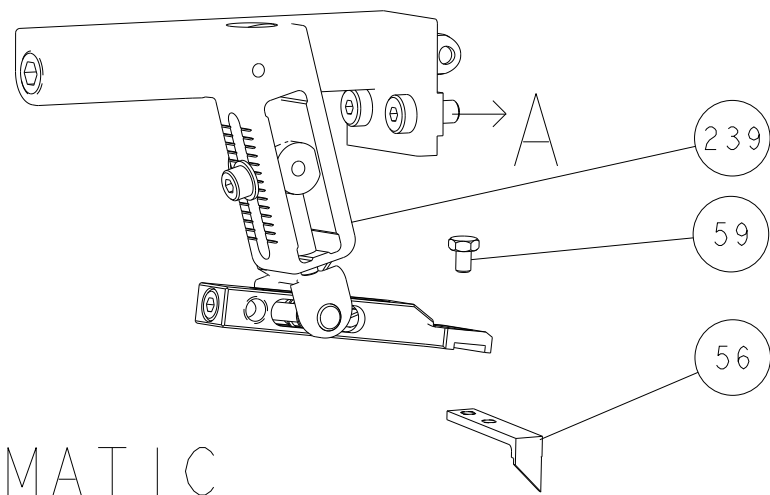
ATLANTIC VERSION  
Shown on sheets 1 of 4 & 2 of 4  
(Pacific version shown on sheets 3 of 4 & 4 of 4)

-	-	1	1	1	1	1	1	1803515-3	RAM ASSEMBLY, SF ATLANTIC	293
-	-	1	1	1	1	1	1	2-1803583-1	APPLICATOR BASIC ASSEMBLY, SF	292
-	-	1	-	1	-	1	-	2119641-1	FEED CAM, AIR FEED	248
-	-	1	1	1	1	1	1	2119082-9	CAM, SNAIL, INSULATION ADJUSTMENT	244
-	-	1	1	1	1	1	1	2079764-1	WASHER, WAVE INSULATION, CREST-TO-CREST	243
-	-	1	1	1	1	1	1	2119083-1	RETAINER, INSULATION DIAL	242
-	-	1	1	1	1	1	1	7-18023-7	SCR, SKT HD CAP M3 X 4.0	241
-	-	-	1	-	1	-	1	2119580-1	MECHANICAL FEED ASSEMBLY	239
-	-	1	-	1	-	1	-	2844940-1	AIR FEED MODULE	238
-	-	1	1	1	1	1	1	4-1722335-3	STRIPPER, SIDE FEED	182
-	-	1	1	1	1	1	1	1-5018030-0	NUT, HEX, REG, RoHS, M3.5	18
-	-	1	1	1	1	1	1	2-1752354-0	STANDOFF, HOLD-DOWN	180
-	-	1	1	1	1	1	1	9931111-1	PIN, SLOTTED SPRING 3.0 X 20.0	177
-	-	1	1	1	1	1	1	5-22280-0	SPRING, COMPRESSION	176
-	-	1	1	1	1	1	1	1752353-3	GUIDE PIN, HOLDDOWN	175
-	-	1	1	1	1	1	1	1901680-2	GUIDE PIN, HOLDDOWN	174
-	-	REF	REF	REF	REF	REF	REF	994970-2	COUNTER, MAGNETIC	164
-	-	1	1	1	1	1	1	2119955-1	ASSY, LUBRICATOR, SIDE FEED	113
-	-	1	1	1	1	1	1	2844908-1	SCREW, LOCKING	99
-	-	1	1	1	1	1	1	2844907-1	POST, LOCKING	98
1	-	1	1	1	1	1	1	455888-8	SPACER, CRIMPER	82
1	-	-	-	-	-	-	-	2266100	PRINT, APPLICATOR LOG SHEET	72
-	-	1	1	1	1	1	1	1803607-3	DOCUMENTATION PACKAGE	71
-	-	2	2	2	2	2	2	2119791-9	DEPRESSOR, WIRE	70
-	-	1	1	1	1	1	1	2119740-1	TAG, IDENTIFICATION	67
-	-	2	2	2	2	2	2	2168078-1	SCREW, DRIVE, RH, RoHS, 2 x .188	66
-	-	1	1	1	1	1	1	2168083-2	SCR, SKT HD CAP, RoHS, M4 x 8.0	60
-	-	1	1	1	1	1	1	5-18022-5	SCR, HEX HD CAP, M4 X 6.0	59
-	-	1	1	1	1	1	1	1338685-1	PAWL, FEED	56
-	-	4	4	4	4	4	4	2168083-3	SCR, SKT HD CAP, RoHS, M4 X 12.0	54
-	-	2	2	2	2	2	2	1-2168083-0	SCR, SKT HD CAP, RoHS, M4 x 10	53
-	-	1	1	1	1	1	1	5018030-1	NUT, HEX, REG, RoHS, M3	52
-	-	1	1	1	1	1	1	811242-5	BUMPER, HOLD DOWN	51
-	-	1	1	1	1	1	1	690753-2	SPACER, TONKER	50
-	-	1	2	1	2	1	2	18023-9	SCR, SKT HD CAP M4 X 6.0	49
-	-	-	1	-	1	-	1	2119652-1	FEED CAM, PRE FEED	48
-	-	-	1	-	1	-	1	2119653-1	FEED CAM, POST FEED	47
-	-	1	1	1	1	1	1	1803583-9	APPLICATOR BASIC ASSEMBLY, SF	46
-	-	1	1	1	1	1	1	1803515-1	RAM ASSEMBLY, SF ATLANTIC	44
-	-	1	1	1	1	1	1	1803602-1	SCR, BHSC, RoHS (M8 X 25)	41
-	-	1	1	1	1	1	1	2-1752356-0	SUPPORT, TERMINAL	34
-	-	2	2	2	2	2	2	2079383-5	SCR, BHSC, RoHS (M4 X 20)	33
-	-	2	2	2	2	2	2	2-2844962-8	SPACER, CYLINDRICAL, STRIP GUIDE	30
-	-	1	1	1	1	1	1	2844992-1	ASSEMBLY, STRIP GUIDE	29
-	-	1	1	1	1	1	1	1320928-2	STRIP GUIDE	24
-	-	1	1	1	1	1	1	2168083-2	SCR, SKT HD CAP, RoHS, M4 x 8.0	21
-	-	2	2	2	2	2	2	1-18028-2	WASHER, FLAT, REG M4	20
-	-	1	1	1	1	1	1	2119533-1	STRIPPER, SIDE FEED	19
-	-	1	1	1	1	1	1	2119806-1	INSERT, SHEAR	13
-	-	1	1	1	1	1	1	3-22280-3	SPRING, COMPRESSION	12
-	-	1	1	1	1	1	1	1-356885-4	STOP, SHEAR	11
-	-	1	1	1	1	1	1	2119805-1	SHEAR HOLDER, FRONT	10
-	-	1	1	1	1	1	1	1803095-1	FLOATING SHEAR, FRONT	9
1	1	2	2	1	1	1	1	1803293-1	ANVIL, COMBINATION DEUTSCH STYLE	8
-	-	-	-	-	-	-	-	-	-	7
-	-	-	-	-	-	-	-	-	-	6
-	-	1	1	1	1	1	1	2119757-8	DEPRESSOR, SHEAR	5
-	-	1	1	1	1	1	1	238011-9	BLOCK, CRIMPER SPACER	4
1	1	2	2	1	1	1	1	1803019-3	CRIMPER, INSULATION O	3
1	-	1	1	1	1	1	1	455888-1	SPACER, CRIMPER	2
-	1	2	2	1	1	1	1	2-1633713-6	CRIMPER, WIRE PREMIUM	1
-78	-77	-72	-71	-52	-51	-2	-1	PART NO	DESCRIPTION	ITEM NO

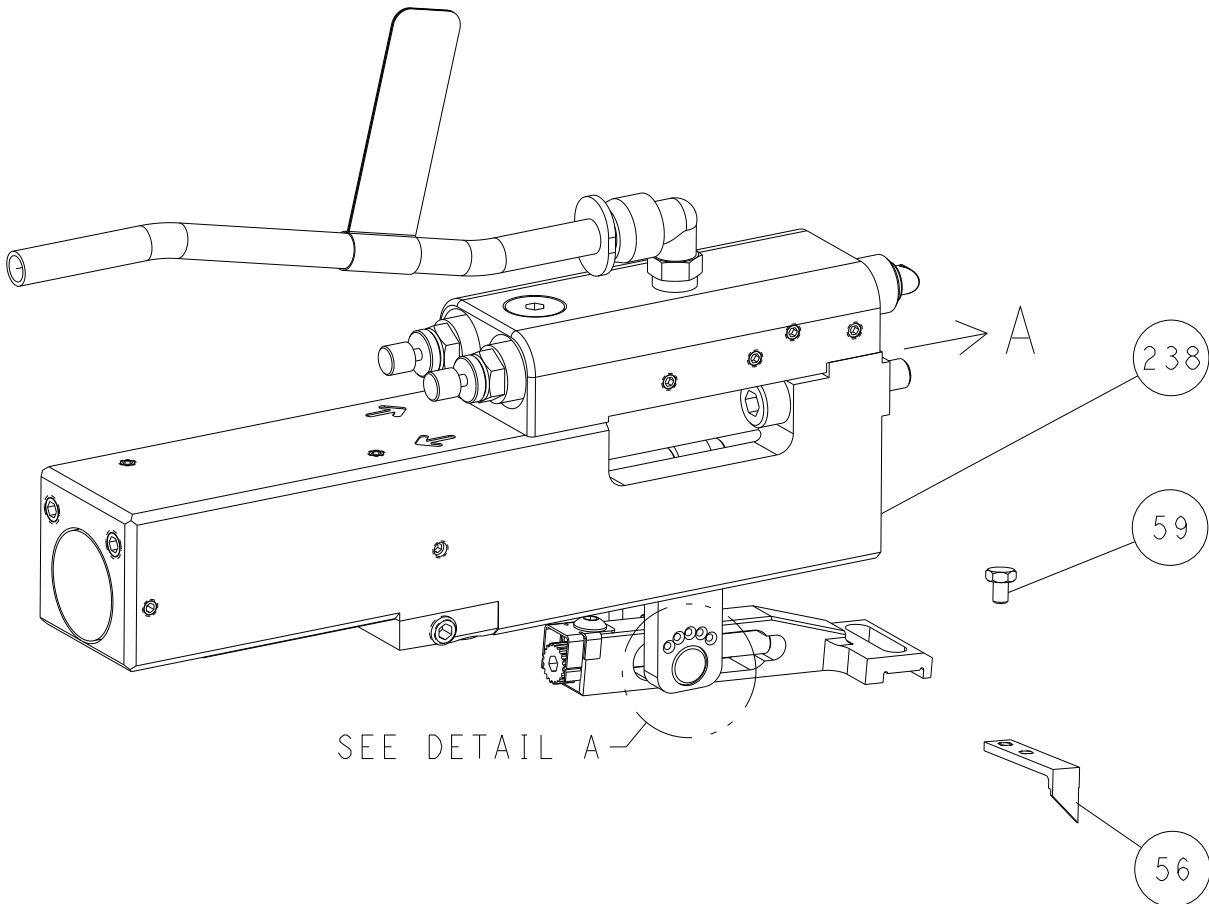
<div>FIG. 1 PARTS 1 &amp; 2 CONTROL SYSTEMS INFORMATION</div> <div>FIG. 2 PARTS 3 &amp; 4 CONTROL SYSTEMS INFORMATION</div> <div>FIG. 3 PARTS 5 &amp; 6 CONTROL SYSTEMS INFORMATION</div> <div>FIG. 4 PARTS 7 &amp; 8 CONTROL SYSTEMS INFORMATION</div>				<div>DWN</div> <div>B. KNEPPER</div> <div>23AUG2013</div> <div>CHK</div> <div>G. BAILEY</div> <div>23AUG2013</div> <div>APVD</div> <div>M. CLIFFORD</div> <div>23AUG2013</div>		<div> TE Connectivity</div> <div>Harrisburg, PA 17105-3608</div>							
DIMENSIONS:		TOLERANCES UNLESS OTHERWISE SPECIFIED:		NAME		Ocean Side Feed Applicator							
mm				PRODUCT SPEC									
		0 PLC ± 1 PLC ± 2 PLC ± 3 PLC ± 4 PLC ±		APPLICATION SPEC									
MATERIAL		ANGLES FINISH		WEIGHT		SIZE	CAGE CODE	DRAWING NO	RESTRICTED TO				
-		-		-		A I	00779	C=2266100	-				
Customer Accessible Production Drawing								SCALE	1:2	SHEET	1 of 4	REV	D

LOC	DIST	REVISIONS					
		P	LTR	DESCRIPTION	DATE	DWN	APVD
A	66	-	-	SEE SHEET 1	-	-	-

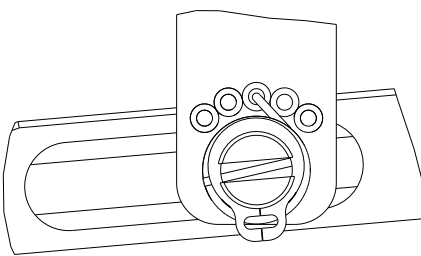
# FEED TYPE MECHANICAL



# PNEUMATIC

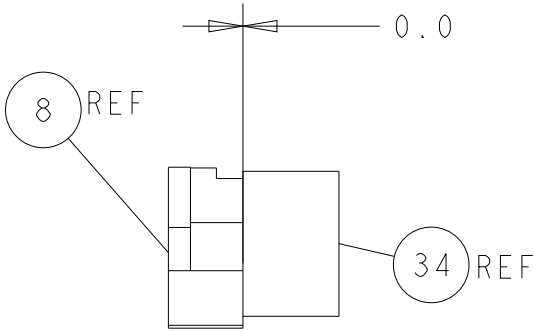
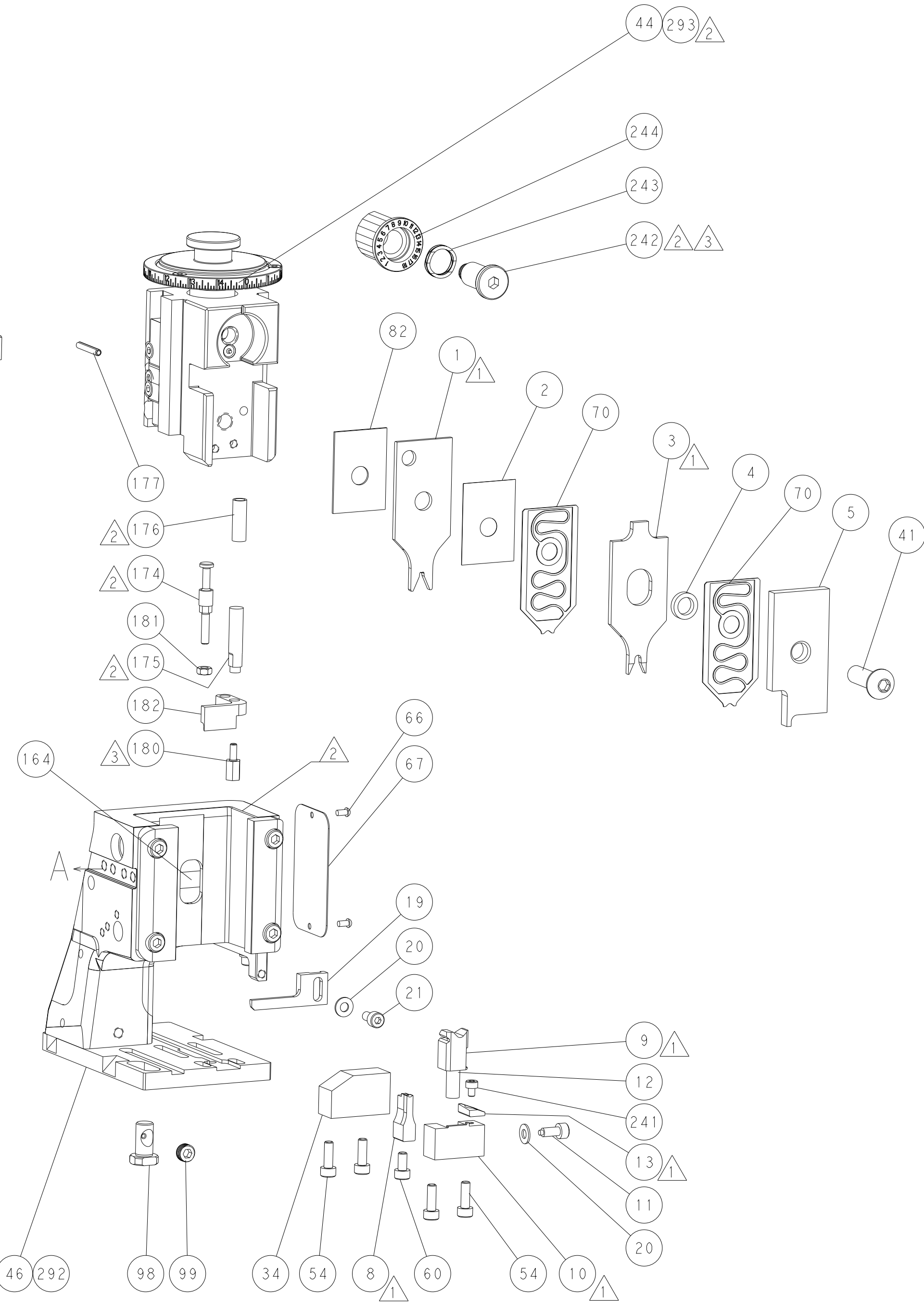
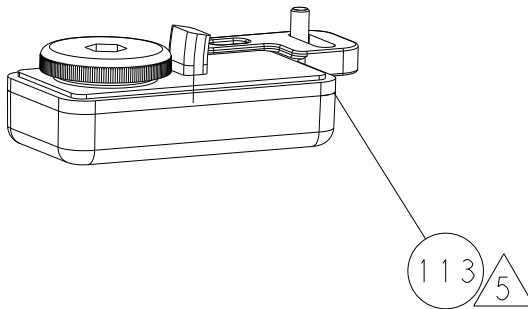
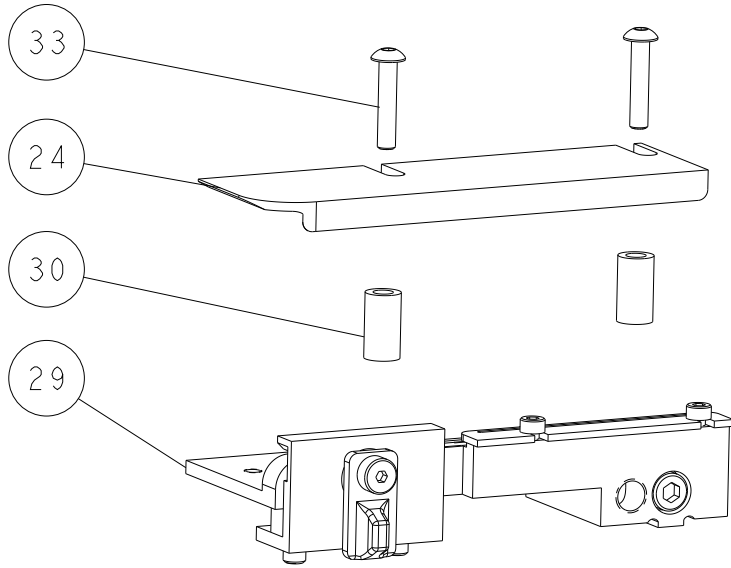
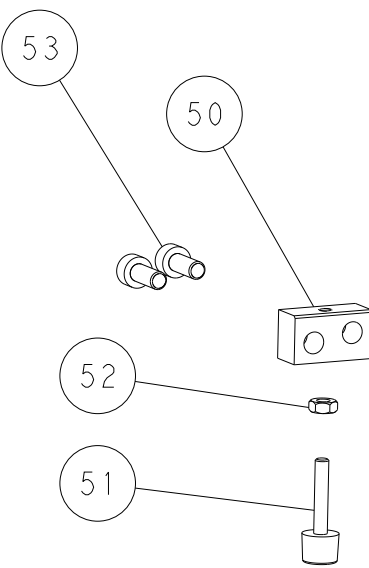
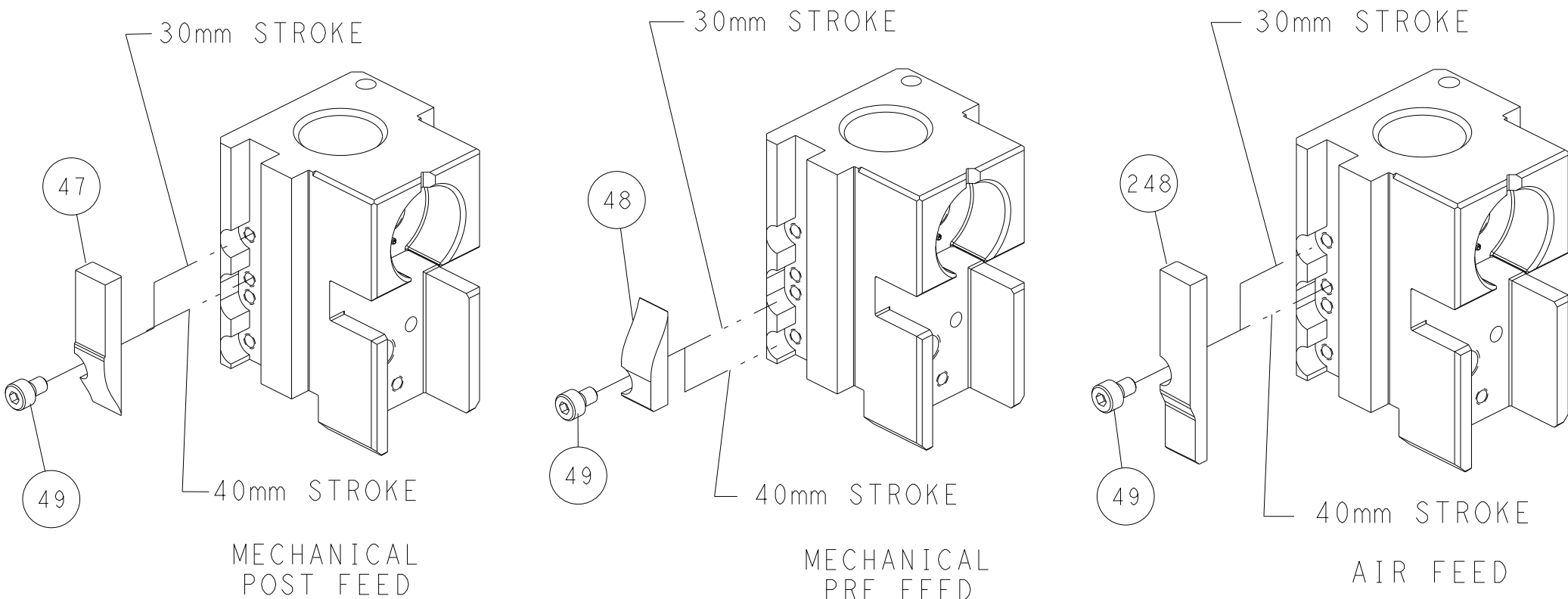


# FEED SPRING SETTING POSITION (SHOWN FROM REAR SIDE)

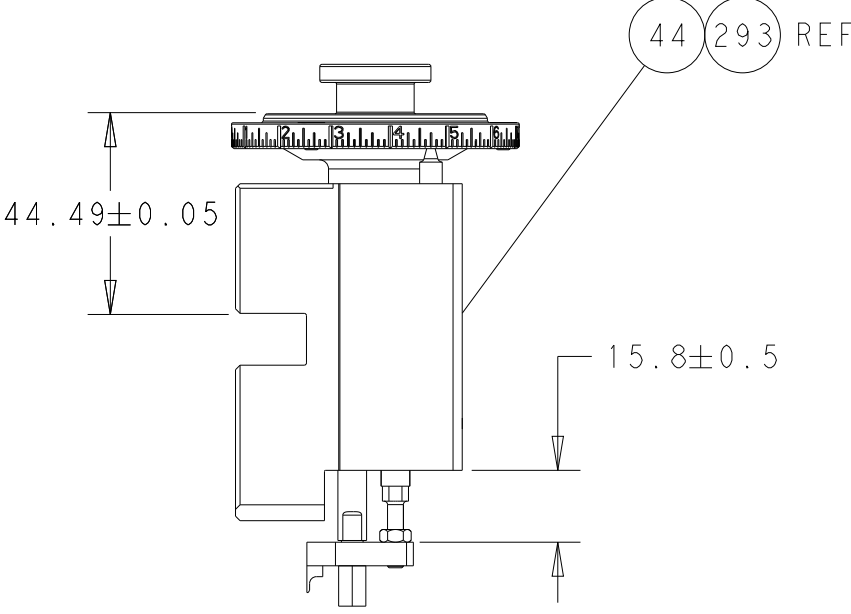


DETAIL A

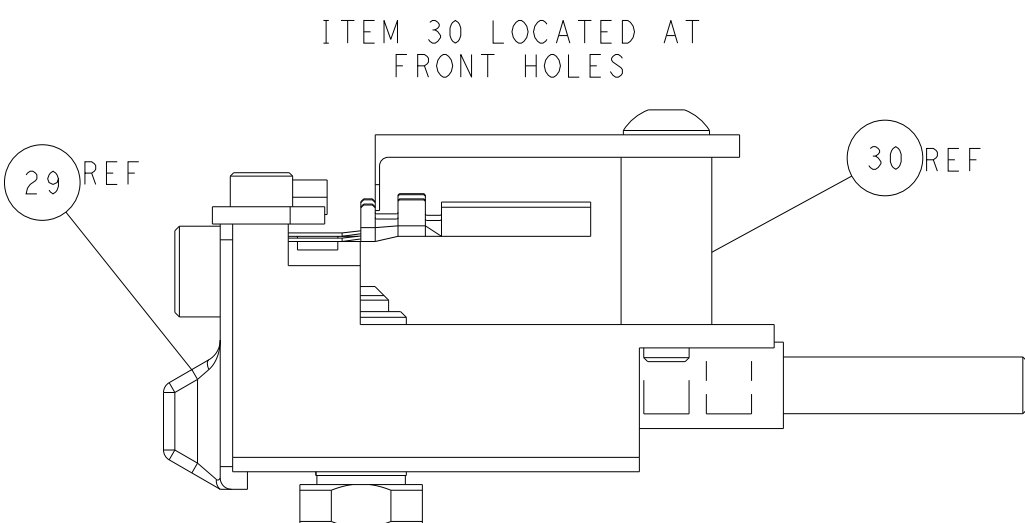
# CAM POSITIONS



TERMINAL SUPPORT LOCATION



RAM & HOLD DOWN SET-UP



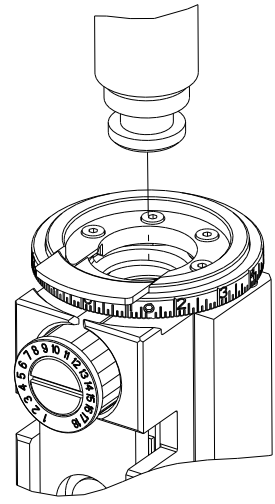
FEED TRACK POSITION  
GUIDE BY INSULATION BARREL

ATLANTIC VERSION  
Shown on sheets 1 of 4 & 2 of 4  
(Pacific version shown on sheets 3 of 4 & 4 of 4)

THIS DRAWING IS A CONTROLLED DOCUMENT FOR TYCO ELECTRONICS CORPORATION. IT IS SUBJECT TO COMPANY CONTROL AND THE ISSUING ORGANIZATION SHOULD BE CONTACTED FOR THE LATEST REVISION.				DWN R. KNEPPER 23AUG2013	TE Connectivity Harrisburg, PA 17105-3608	
				CHK G. BAILEY 23AUG2013		
				APVD M. CLIFFORD 23AUG2013	NAME Ocean Side Feed Applicator	
				PRODUCT SPEC		
				APPLICATION SPEC		
				WEIGHT		
				Customer Accessible Production Drawing		
				SCALE 1:2		
				SHEET 2		
				OF 4		
				REV D		

8		7	
THIS DRAWING IS UNPUBLISHED.		RELEASED FOR PUBLICATION 20	
© COPYRIGHT 20 BY TYCO ELECTRONICS CORPORATION. ALL RIGHTS RESERVED.			
PART NUMBER	REVISION	DESCRIPTION	FEED TYPE
2-2266100-1	D	FINE CRIMP HEIGHT ADJUST	MECHANICAL
2-2266100-2	D	FINE CRIMP HEIGHT ADJUST	PNEUMATIC
7-2266100-7	B	CRIMP TOOLING KIT	-
7-2266100-8	B	APPLICATOR CONVERSION KIT	-

PACIFIC VERSION TERMINATOR  
INTERFACE ADAPTER



APPLICATOR DATA		
CRIMP	SIZE	TYPE
WIRE	2.29 mm [.090]	F
INSUL	3.20 mm [.126]	O
APPLICATOR INSTRUCTIONS 408-35042		

APPLICATOR CONVERSION KITS	
PART NUMBER	INSULATION DIAMETER RANGE
7-2266100-8	Ø 3.05-3.81mm [.120-.150]
7-2266101-8	Ø 2.67-3.02mm [.105-.119]
7-2266102-8	Ø 2.26-2.64mm [.089-.104]
7-2266103-8	Ø 1.93-2.24mm [.076-.088]
7-2266104-8	Ø 1.60-1.91mm [.063-.075]

TERMINAL DATA: DEUTSCH TERMINAL TE CRIMP SPECIFICATION			
TERMINAL NAME: STAMPED CONTACT CONTACT PIN SIZE 16			
WIRE STRIP LENGTH 3.81-5.09 mm [.150-.200 IN]		INSULATION DIAMETER RANGE Ø 3.05-3.81 mm [.120-.150 IN]	
TERMINAL APPLICATION SPECIFICATION 	114-151000	-	-
TERMINALS APPLIED			
TE TERMINAL	DEUTSCH TERMINAL	TE TERMINAL	DEUTSCH TERMINAL
286505-1	1060-14-0122	286505-2	1060-14-0144
286505-3	1060-14-0177	286505-5	1060-14-1077
286505-6	1060-14-1088	286503-1	1060-16-0122
286503-2	1060-16-0144	286503-3	1060-16-0177
286503-7	1060-16-0722	286503-8	1060-16-0744
286503-9	1060-16-0777	1-286503-1	1060-16-0977
1-286503-2	1060-16-0988	1-286503-4	AT60-16-0122
1-286503-5	AT60-16-0144		

TERMINAL DATA: DEUTSCH TERMINAL TE CRIMP SPECIFICATION			
TERMINAL NAME: STAMPED CONTACT SOCKET SIZE 16			
WIRE STRIP LENGTH 3.81-5.09 mm [.150-.200 IN]		INSULATION DIAMETER RANGE Ø 3.05-3.81 mm [.120-.150 IN]	
TERMINAL APPLICATION SPECIFICATION 	114-151000	-	-
TERMINALS APPLIED			
TE TERMINAL	DEUTSCH TERMINAL	TE TERMINAL	DEUTSCH TERMINAL
286506-1	1062-14-0122	286506-2	1062-14-0144
286506-3	1062-14-0177	286506-6	1062-14-1088
286506-5	1062-14-1077	286504-2	1062-16-0144
286504-1	1062-16-0122	286504-7	1062-16-0722
286504-3	1062-16-0177	286504-9	1062-16-0777
286504-8	1062-16-0744	1-286504-2	1062-16-0988
1-286504-1	1062-16-0977	1-286504-6	AT62-16-0144
1-286504-5	AT62-16-0122		

WIRE SIZE		CRIMP HEIGHT mm [INCH]		CRIMP HEIGHT REFERENCE SETTING
14 AWG		1.40+0.03/-0.05 [.055+.001/- .002]		4.6
2.00mm2		1.40+0.03/-0.05 [.055+.001/- .002]		4.6
1.50mm2		1.35+0.03/-0.05 [.053+.001/- .002]		5.2
16 AWG		1.27+0.03/-0.05 [.050+.001/- .002]		6.0
1.00mm2		1.27+0.03/-0.05 [.050+.001/- .002]		6.0
18 AWG		1.24+0.03/-0.05 [.049+.001/- .002]		6.2
0.75mm2		1.22+0.03/-0.05 [.048+.001/- .002]		6.4



RECOMMENDED SPARE PARTS

REFER TO SUPPLIED INSTRUCTION SHEET FOR CLEANING, LUBRICATION AND STORAGE OF APPLICATOR.

APPLY PART NUMBER 2-23419-6 LOCTITE TO THREADS OF ITEM 242.

CRIMP HEIGHT REFERENCE SETTING WAS THE SETTING USED WHEN THE APPLICATOR WAS QUALIFIED AT THE FACTORY. ADJUSTMENT MAY BE NECESSARY WHEN RUNNING APPLICATOR IN THE FIELD.

TERMINAL LUBRICANT IS RECOMMENDED.

6. UNLESS SPECIFIED OTHERWISE TORQUE VALUES SHALL BE USED PER DOCUMENT, 101-35000.

SEE APPROPRIATE APPLICATOR LOG SHEETS FOR APPLIED TERMINALS, WIRE RANGE AND MEMORY CHIP.

\*WARNING  
ON INSTALLATION, SET WIRE DISC TO CRIMP HEIGHT REFERENCE SETTING FOR LARGEST WIRE SIZE. CRIMP HEIGHT REFERENCE SETTINGS GREATER THAN THE VALUE SHOWN MAY CAUSE DAMAGE TO THE CRIMP TOOLING. REFER TO THE INSTRUCTION SHEET FOR PROPER SETUP AND ADJUSTMENTS.

PACIFIC VERSION  
Shown on sheets 3 of 4 & 4 of 4  
(Atlantic version shown on sheets 1 of 4 & 2 of 4)

LOC	DIST	REVISONS				
A	66	P	LTR	DESCRIPTION	DATE	DWN
		-		SEE SHEET 1	-	-

-	-	1	1	2119082-9	CAM, SNAIL, INSULATION ADJUSTMENT	244
-	-	1	1	2079764-1	WASHER, WAVE SPRING, CREST-TO-CREST	243
	-	1	1	2119083-1	RETAINER, INSULATION DIAL	242
-	-	1	1	7-18023-7	SCR, SKT HD CAP M3 X 4.0	241
-	-	-	1	2119580-1	MECHANICAL FEED ASSEMBLY	239
-	-	1	-	2844940-1	AIR FEED MODULE	238
-	-	REF	REF	994970-2	COUNTER, MAGNETIC	164
-	-	1	-	2119641-2	FEED CAM, AIR FEED	151
-	-	1	1	2168083-8	SCR, SKT HD CAP, RoHS, M4 X 16	144
-	-	4	4	2168083-9	SCR, SKT HD CAP, RoHS, M4 X 20	143
-	-	-	1	2119653-2	FEED CAM, POST FEED	142
-	-	1	1	1-1803583-0	APPLICATOR BASIC ASSEMBLY, SF	141
-	-	1	1	1803516-1	RAM ASSEMBLY, SF PACIFIC	140
	-	1	1	2119955-1	ASSY, LUBRICATOR, SIDE FEED	113
-	-	1	1	2844908-1	SCREW, LOCKING	99
-	-	1	1	2844907-1	POST, LOCKING	98
1	-	1	1	455888-8	SPACER, CRIMPER	82
1	-	-	-	2266100	PRINT, APPLICATOR LOG SHEET	72
-	-	1	1	1803607-3	DOCUMENTATION PACKAGE	71
-	-	2	2	2119791-9	DEPRESSOR, WIRE	70
-	-	1	1	2119740-1	TAG, IDENTIFICATION	67
-	-	2	2	2168078-1	SCREW, DRIVE, RH, RoHS, 2 x .188	66
-	-	1	1	5-18022-5	SCR, HEX HD CAP, M4 X 6.0	59
-	-	1	1	1338685-1	PAWL, FEED	56
-	-	2	2	1-2168083-0	SCR, SKT HD CAP, RoHS, M4 X 10	53
-	-	1	1	5018030-1	NUT, HEX, REG, RoHS, M3	52
-	-	1	1	811242-5	BUMPER, HOLD DOWN	51
-	-	1	1	690753-2	SPACER, TONKER	50
-	-	1	2	18023-9	SCR, SKT HD CAP M4 X 6.0	49
-	-	-	1	2119652-1	FEED CAM, PRE FEED	48
-	-	1	1	1803602-1	SCR, BHSC, RoHS (M8 X 25)	41
-	-	1	1	2-1752356-0	SUPPORT, TERMINAL	34
-	-	2	2	2079383-5	SCR, BHSC, RoHS (M4 X 20)	33
-	-	2	2	2-2844962-8	SPACER, CYLINDRICAL, STRIP GUIDE	30
-	-	1	1	2844992-1	ASSEMBLY, STRIP GUIDE	29
-	-	1	1	1320928-2	STRIP GUIDE	24
-	-	1	1	2168083-2	SCR, SKT HD CAP, RoHS, M4 X 8.0	21
-	-	2	2	1-18028-2	WASHER, FLAT, REG M4	20
-	-	1	1	2119533-1	STRIPPER, SIDE FEED	19
	-	1	1	2119806-1	INSERT, SHEAR	13
-	-	1	1	3-22280-3	SPRING, COMPRESSION	12
-	-	1	1	1-356885-4	STOP, SHEAR	11
	-	1	1	2119805-1	SHEAR HOLDER, FRONT	10
	-	1	1	1803095-1	FLOATING SHEAR, FRONT	9
	1	1	1	1803293-1	ANVIL, COMBINATION DEUTSCH STYLE	8
-	-	-	-	-	-	7
-	-	-	-	-	-	6
-	-	1	1	2119757-8	DEPRESSOR, SHEAR	5
-	-	1	1	238011-9	BLOCK, CRIMPER SPACER	4
	1	1	1	1803019-3	CRIMPER, INSULATION O	3
	1	-	1	455888-1	SPACER, CRIMPER	2
	-	1	1	2-1633713-6	CRIMPER, WIRE PREMIUM	1
-78	-77	-22	-21	PART NO	DESCRIPTION	ITEM NO

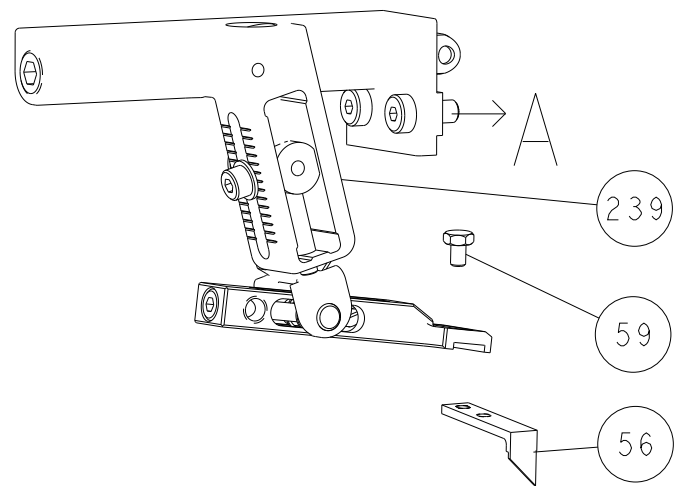
THIS DRAWING IS UNPUBLISHED. IT IS SUBJECT TO CHANGE WITHOUT NOTICE. THE USER SHALL BE RESPONSIBLE FOR VERIFYING THE LATEST REVISIONS. ANY DISCREPANCY SHOULD BE CONTACTED FOR THE LATEST REVISION.		DWN R. KNEPPER 23AUG2013	STE TE Connectivity Harrisburg, PA 17105-3608			
DIMENSIONS: mm		CHK G. BAILEY 23AUG2013	NAME Ocean Side Feed Applicator			
		APVD M. CLIFFORD 23AUG2013	SIZE CAGE CODE DRAWING NO RESTRICTED TO			
TOLERANCES UNLESS OTHERWISE SPECIFIED: 0 PLC ± 1 PLC ± 2 PLC ± 3 PLC ± 4 PLC ± ANGLES ± FINISH		PRODUCT SPEC APPLICATION SPEC	SCALE 1:2			
MATERIAL -		WEIGHT -	SHEET 3 OF 4			
		Customer Accessible Production Drawing	REV D			

SHEETS 1 & 2 ARE NOT REQUIRED FOR PACIFIC VERSION

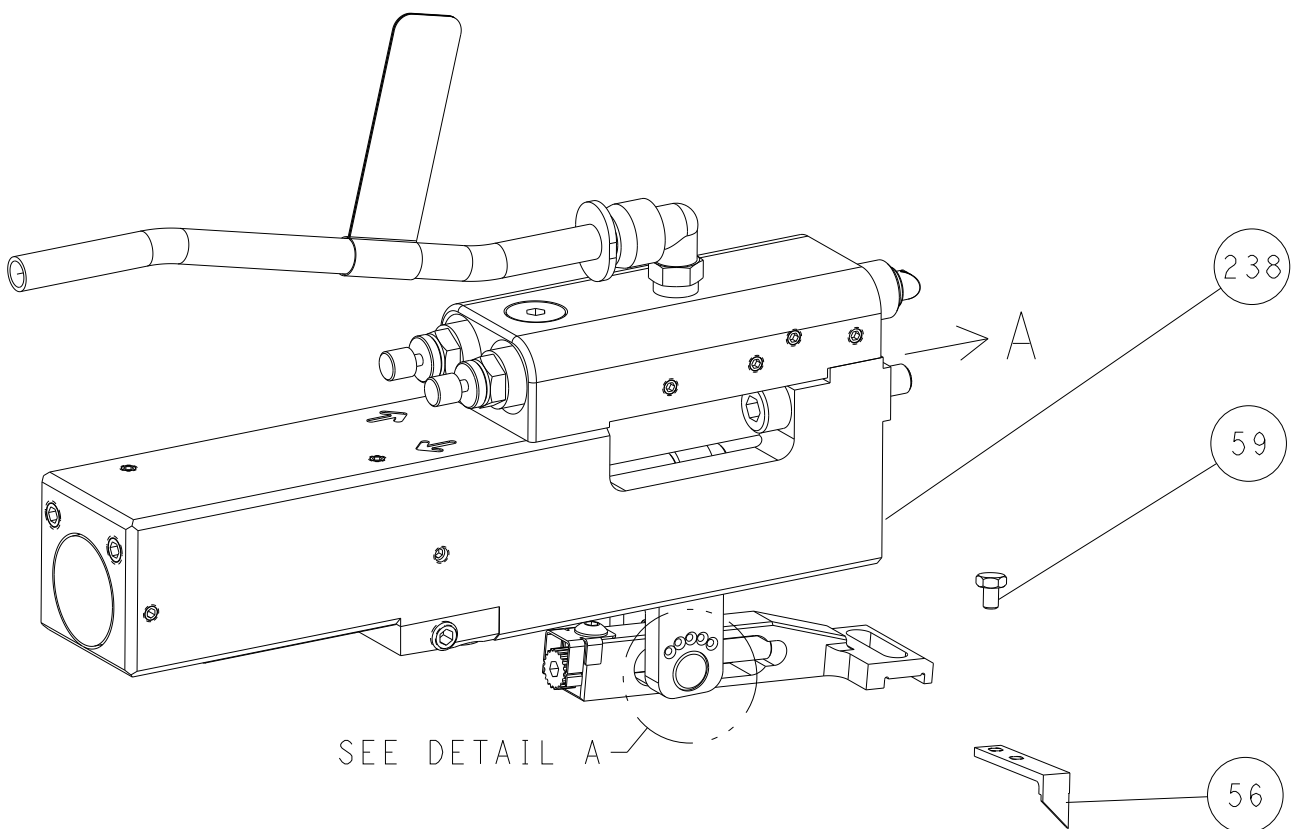
LOC		DIST		REVISIONS				
A	66	P	LTR	DESCRIPTION	DATE	DWN	APVD	
		-		SEE SHEET 1	-	-	-	

FEED TYPE

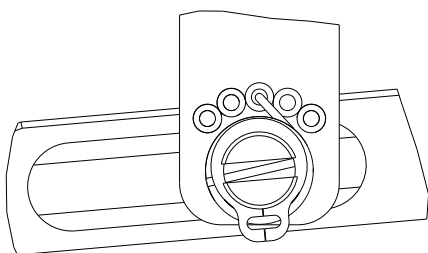
MECHANICAL



PNEUMATIC

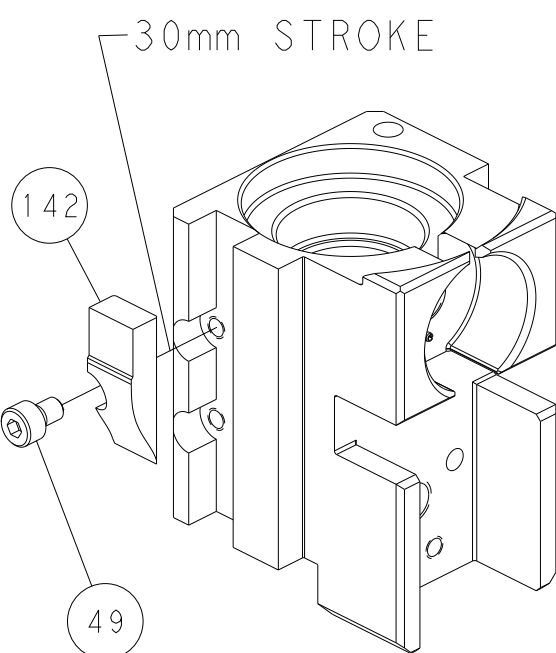


FEED SPRING SETTING POSITION  
(SHOWN FROM REAR SIDE)

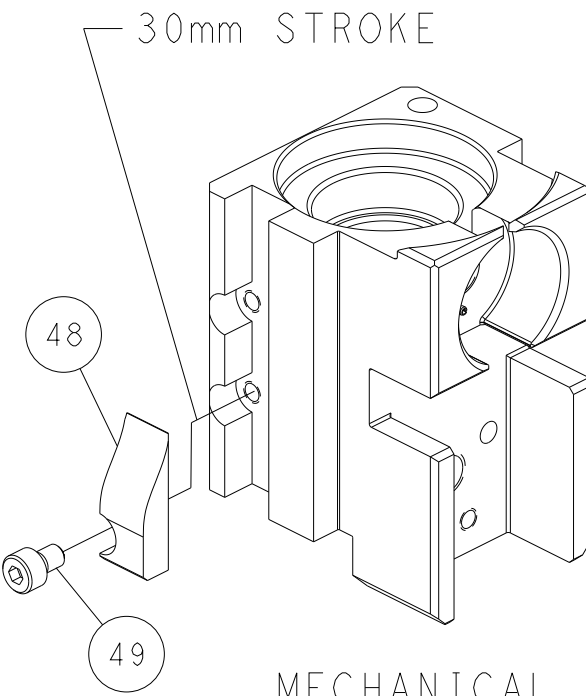


DETAIL A

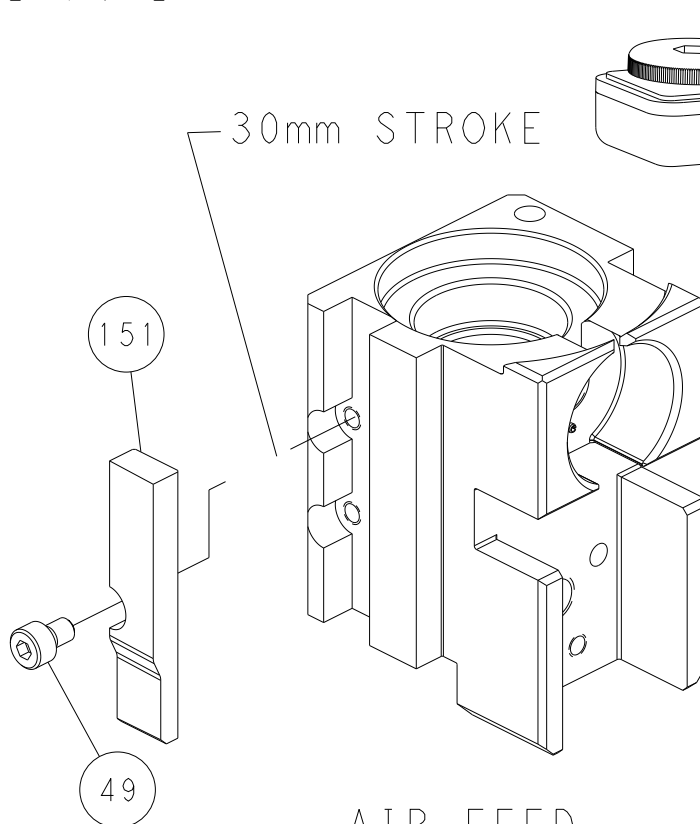
CAM POSITIONS



MECHANICAL  
POST FEED



MECHANICAL  
PRE FEED

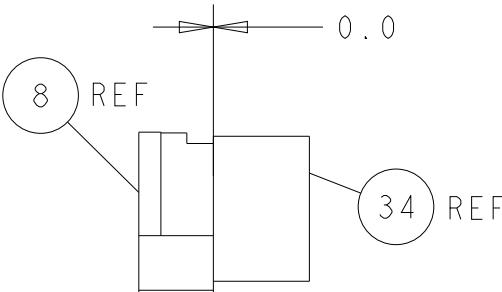
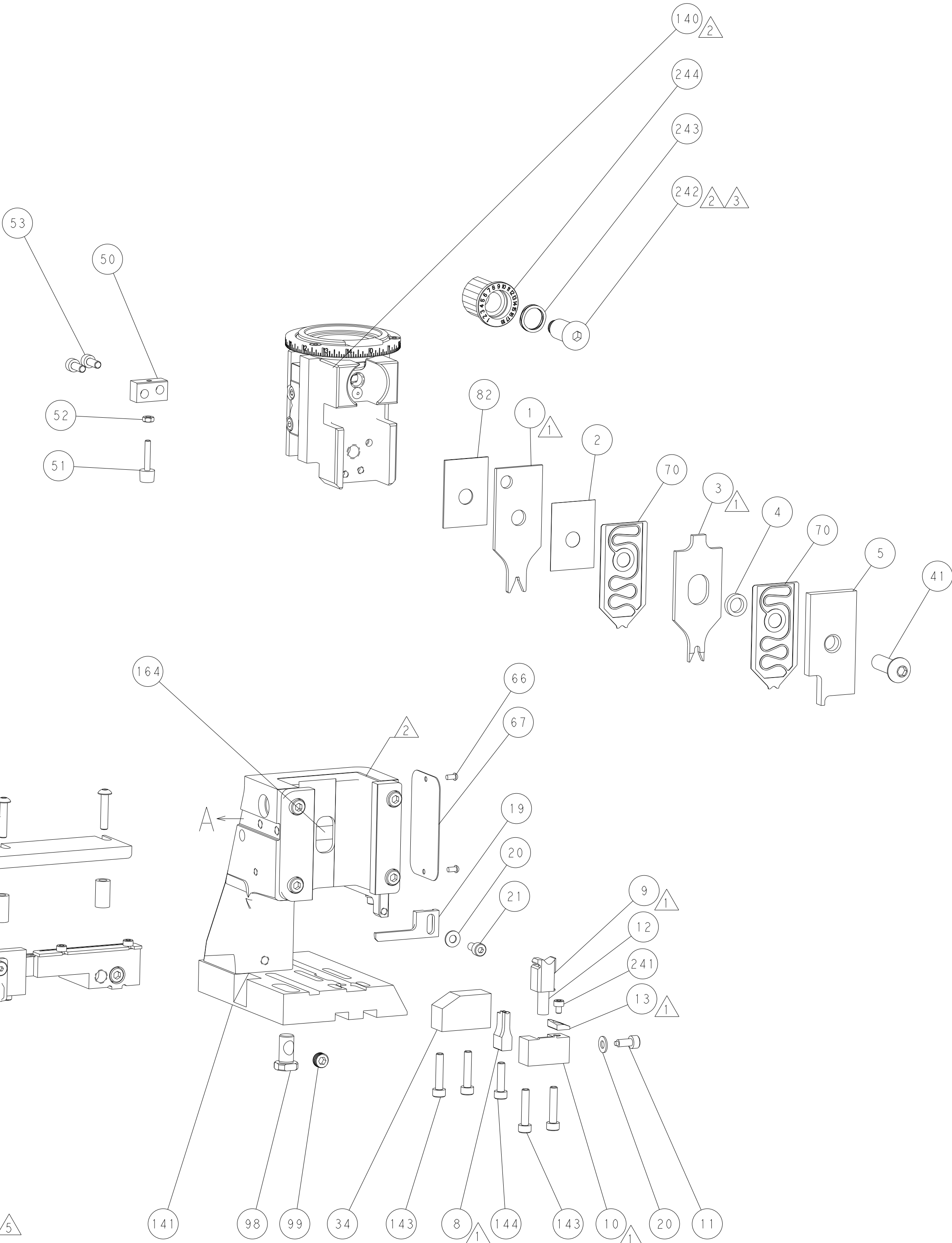


AIR FEED

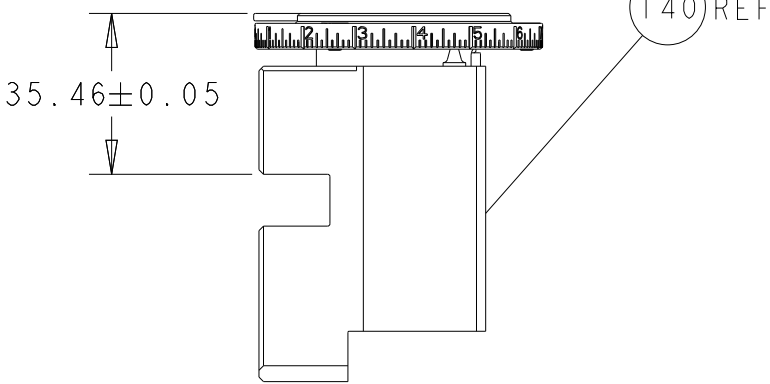
PACIFIC VERSION

Shown on sheets 3 of 4 & 4 of 4

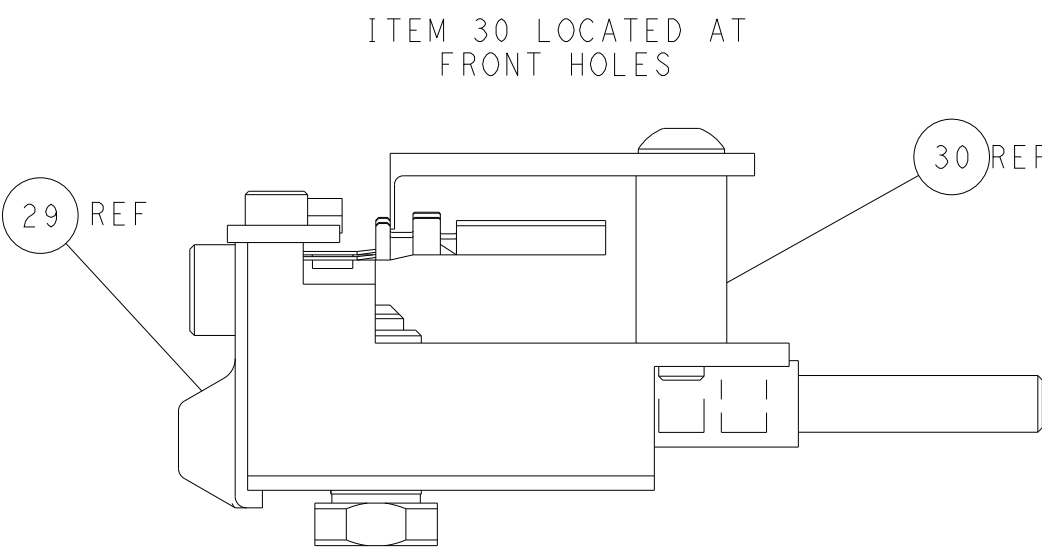
(Atlantic version shown on sheets 1 of 4 & 2 of 4)



TERMINAL SUPPORT LOCATION



RAM SET-UP



FEED TRACK POSITION  
GUIDE BY INSULATION BARREL

THIS DRAWING IS A CONTROLLED DOCUMENT FOR TYCO ELECTRONICS CORPORATION. IT IS SUBJECT TO CHANGE WITHOUT NOTICE. ANY CHANGES TO THIS DRAWING SHOULD BE CONTACTED FOR THE LATEST VERSION.				DWN R. KNEPPER 23AUG2013	TE Connectivity Harrisburg, PA 17105-3608			
				CHK G. BAILEY 23AUG2013				
				APVD M. CLIFFORD 23AUG2013	NAME Ocean Side Feed Applicator			
				PRODUCT SPEC				
				APPLICATION SPEC				
				WEIGHT				
				Customer Accessible Production Drawing				
				SCALE 1:2				
				SHEET 4				
				OF 4				
				REV D				

SHEETS 1 & 2 ARE NOT REQUIRED FOR PACIFIC VERSION