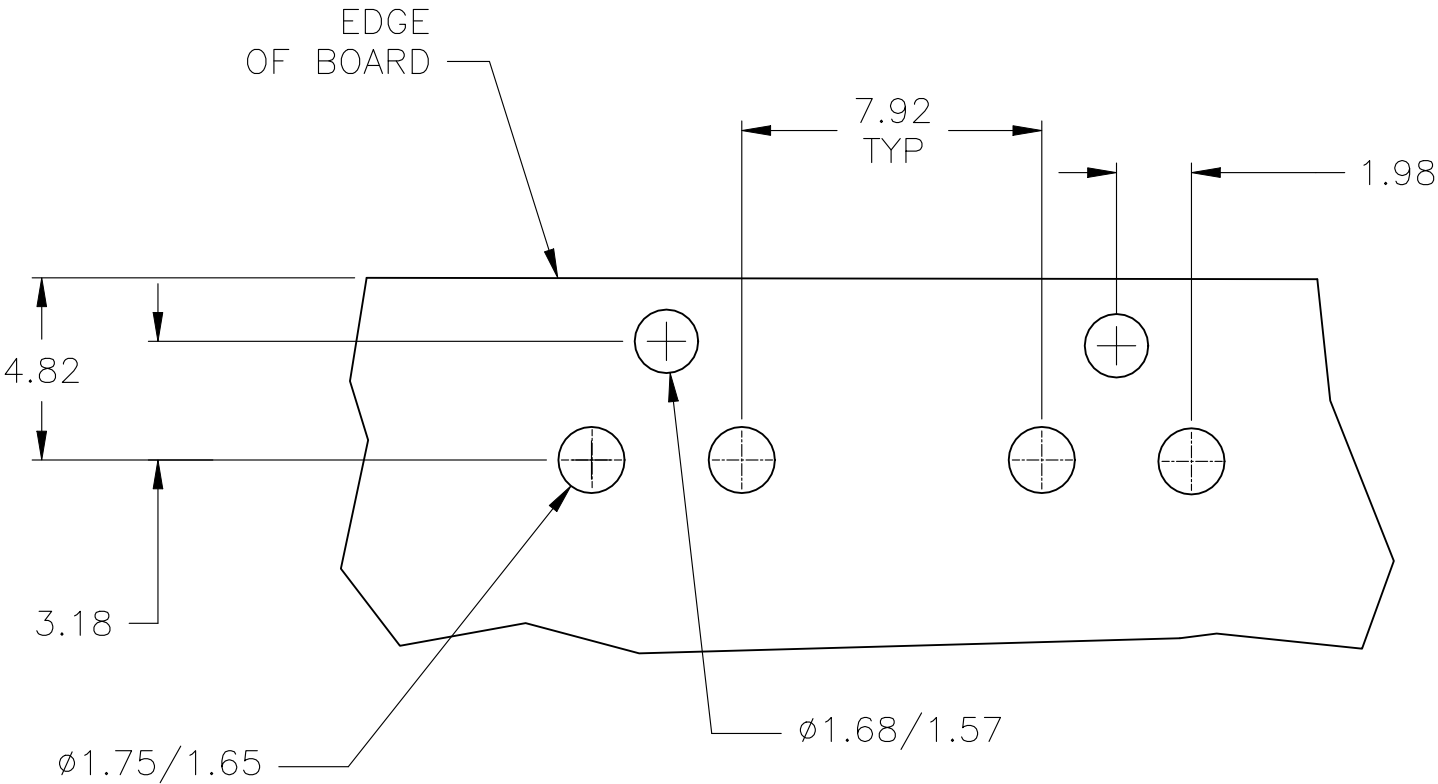
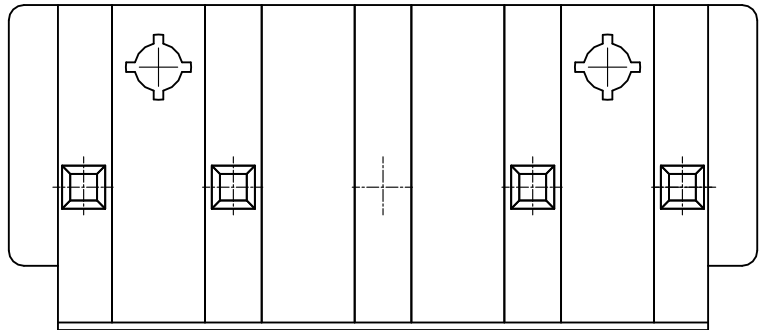
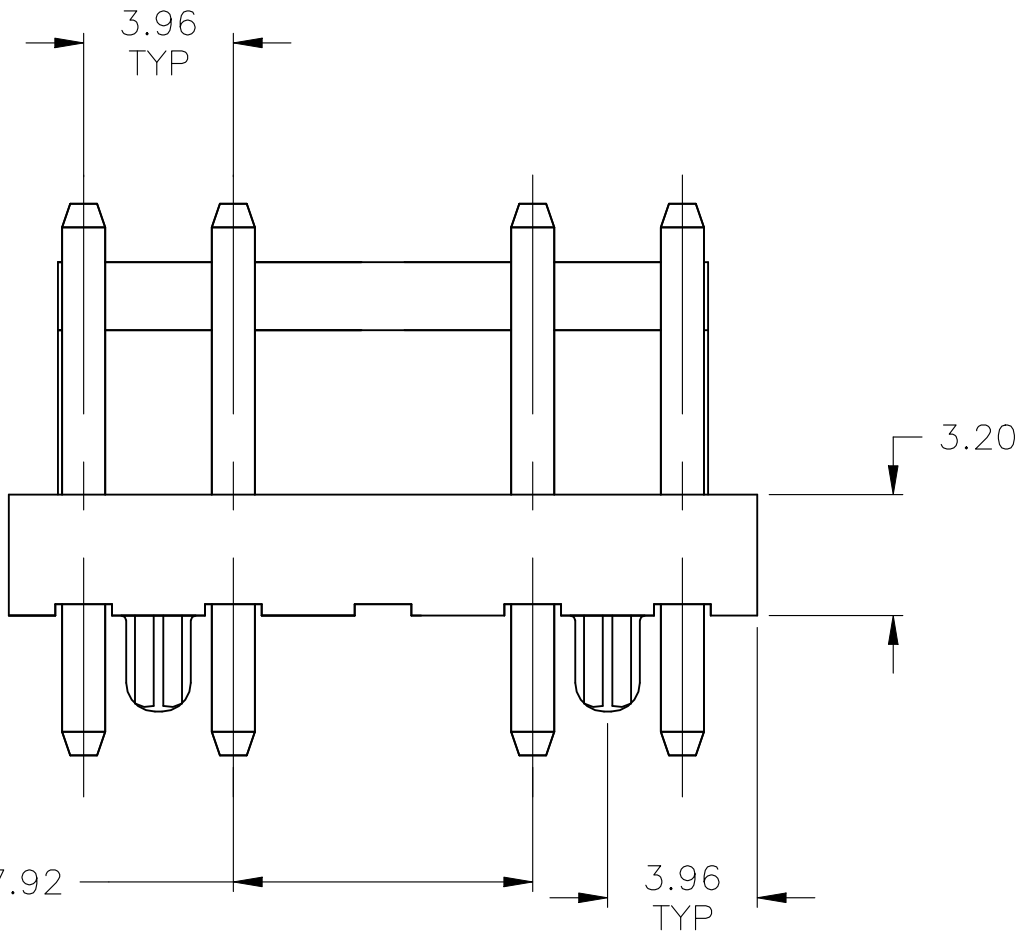
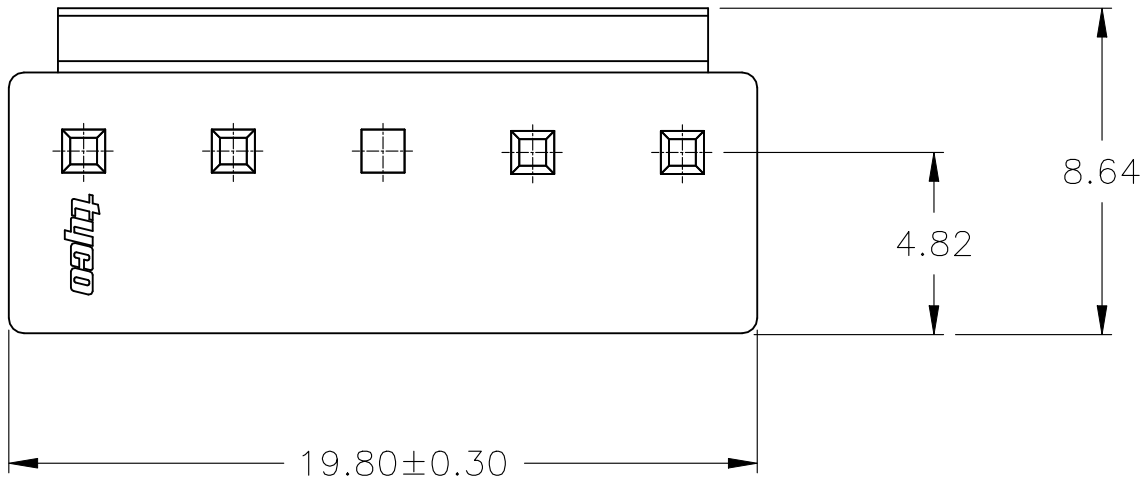
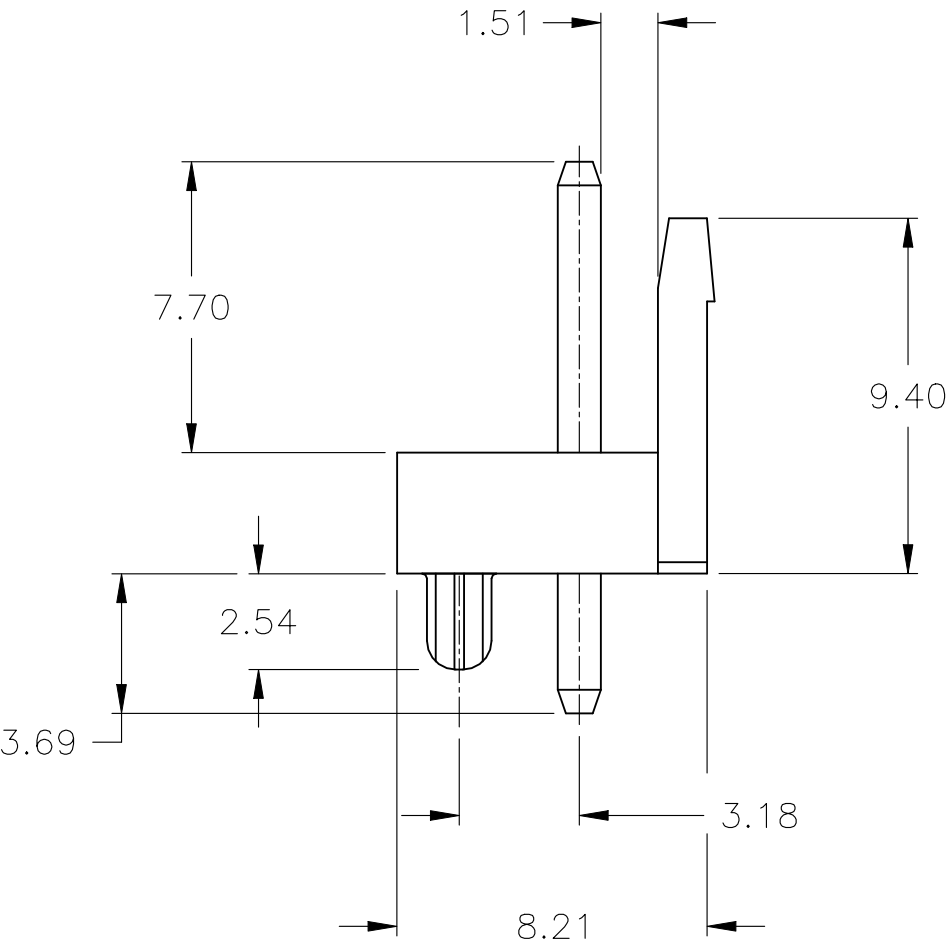


REVISIONS					
P	LTR	DESCRIPTION	DATE	DWN	APVD
	E	REVISED PER ECR-23-165705	18AUG2023	WH	LC



RECOMMENDED MOUNTING HOLE PATTERN  
FOR 1.6 THICK PC BOARD



- 1 HOUSING MATERIAL: NYLON 66 UL94V-0.
- 2 CONTACT MATERIAL: BRASS.
- 3 CONTACT PLATING: 3 MICRONS MIN TIN OVER 1 MICRON MIN NICKEL.

3	RED	1744291-5
3	NATURAL	1744291-1
POST OMITTED	COLOR	PART NUMBER



THIS DRAWING IS A CONTROLLED DOCUMENT.		DWN K. WHITAKER 20DEC2007	TE Connectivity			
		CHK S. RIDGILL 20DEC2007				
DIMENSIONS: mm		APVD S. RIDGILL 20DEC2007	NAME			
		PRODUCT SPEC	108-5609			
		APPLICATION SPEC	114-5253			
MATERIAL SEE NOTES		WEIGHT -	SIZE A2	CAGE CODE 00779	DRAWING NO C=1744291	RESTRICTED TO -
SEE NOTES		CUSTOMER DRAWING		SCALE N/A	SHEET 1 OF 1	REV E