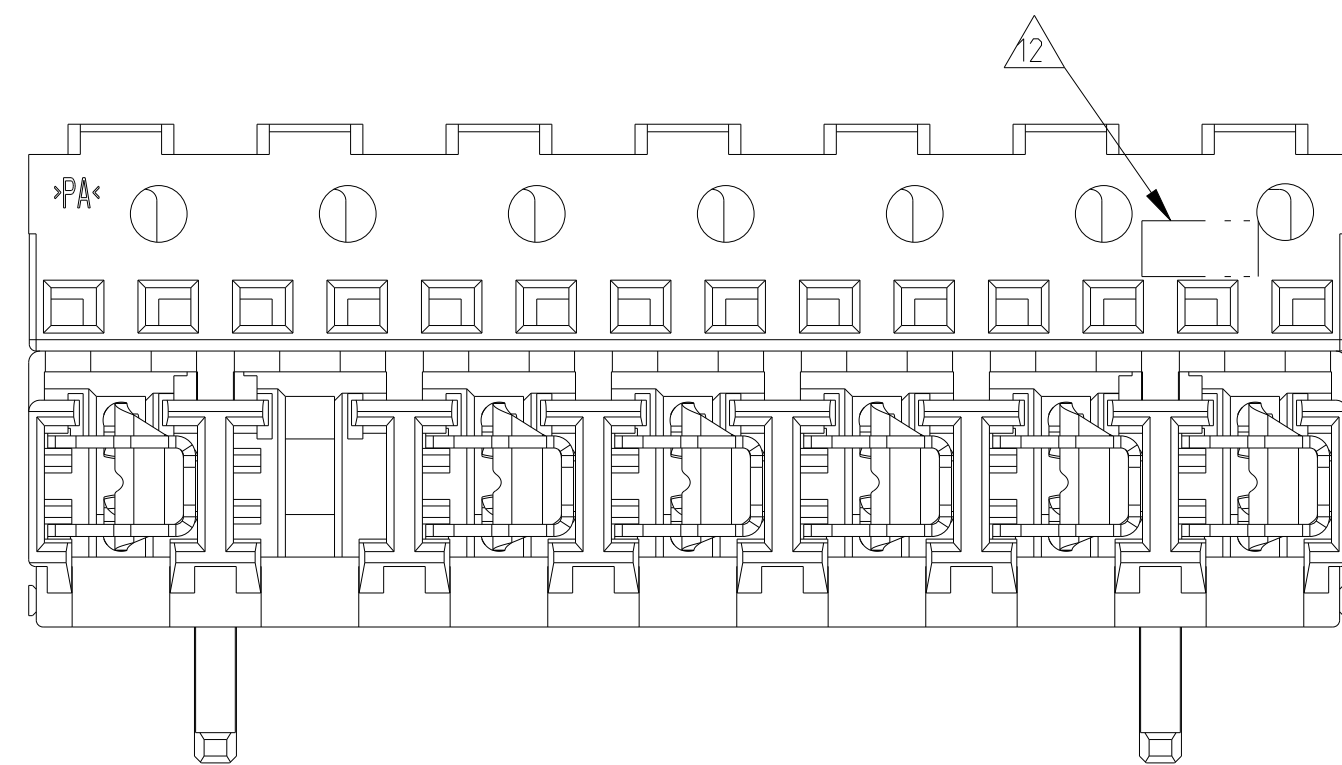
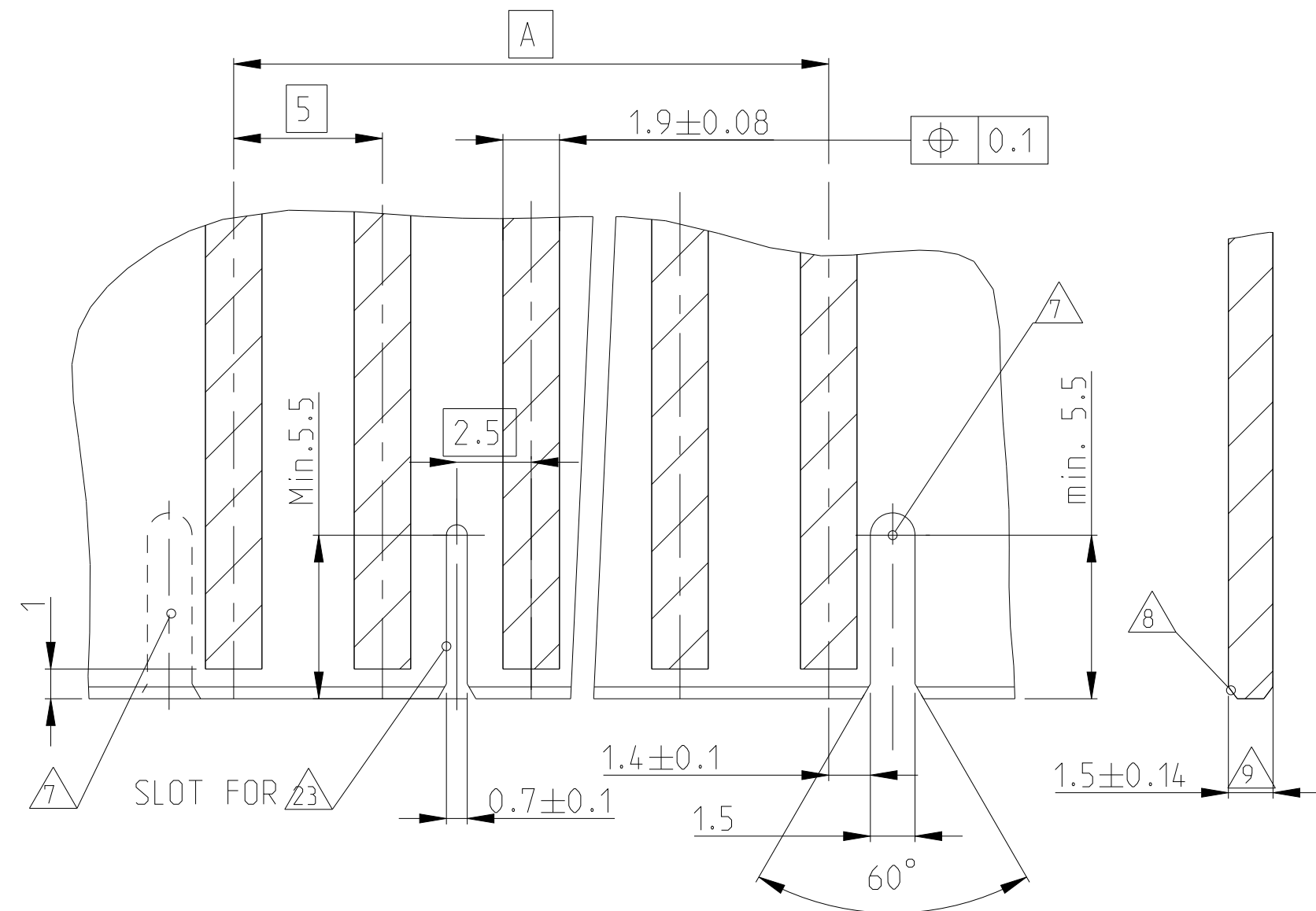
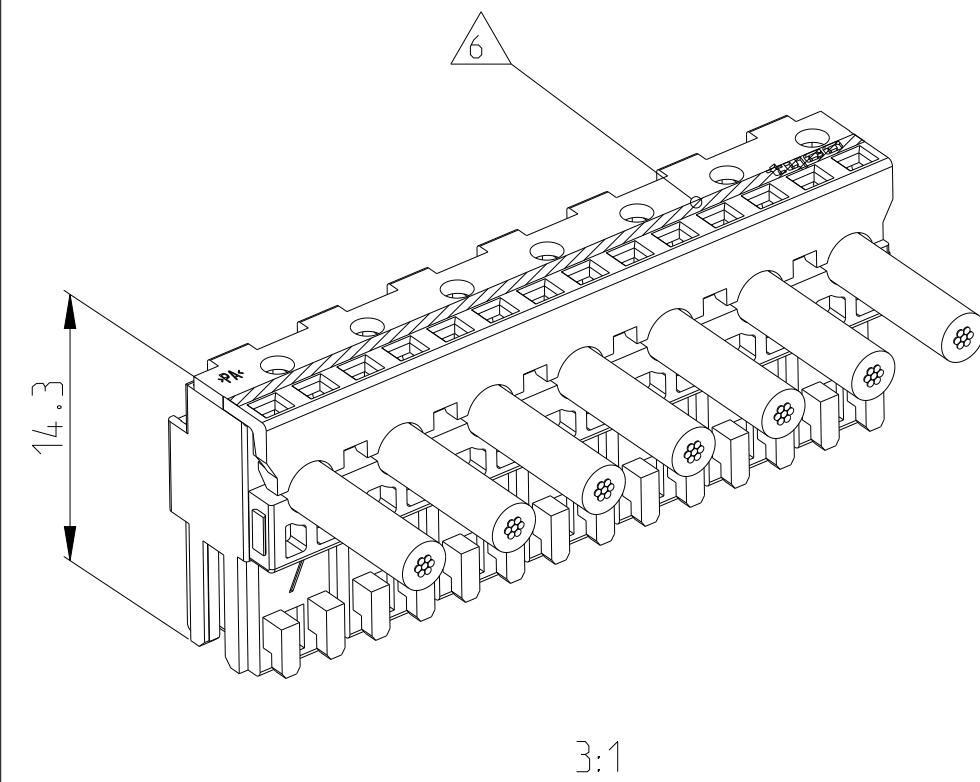
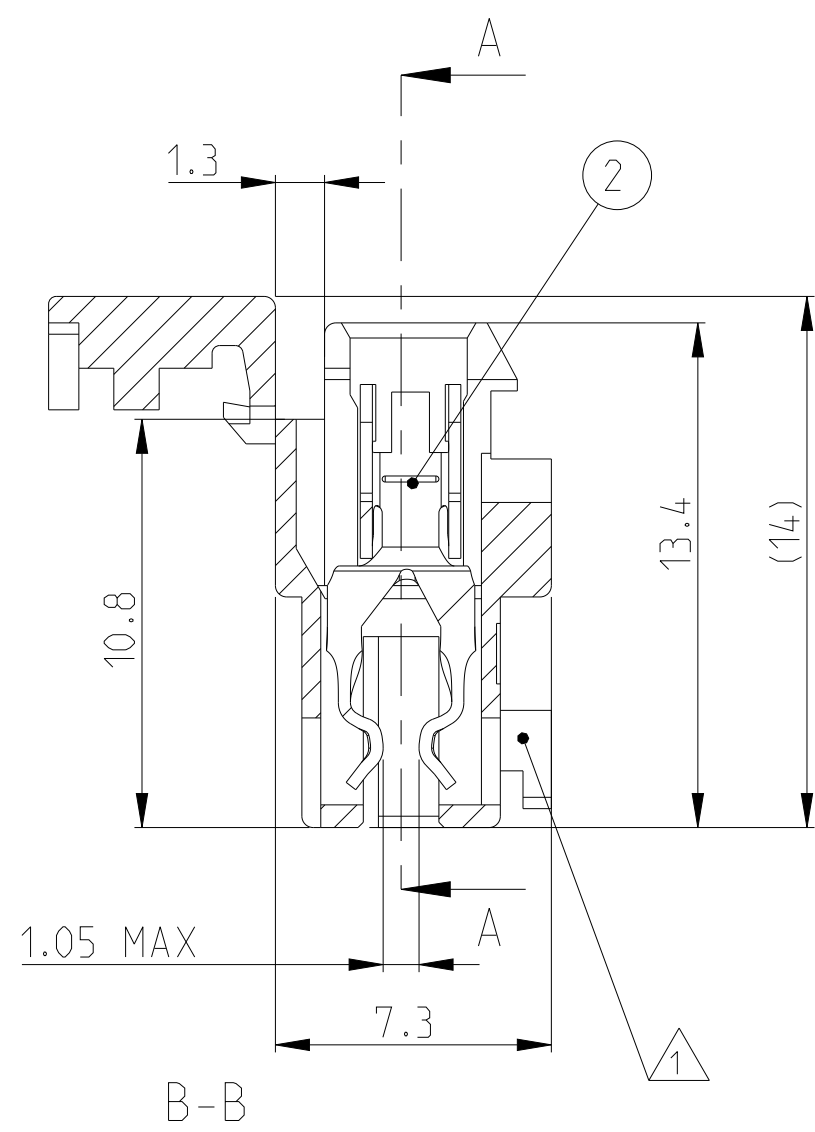
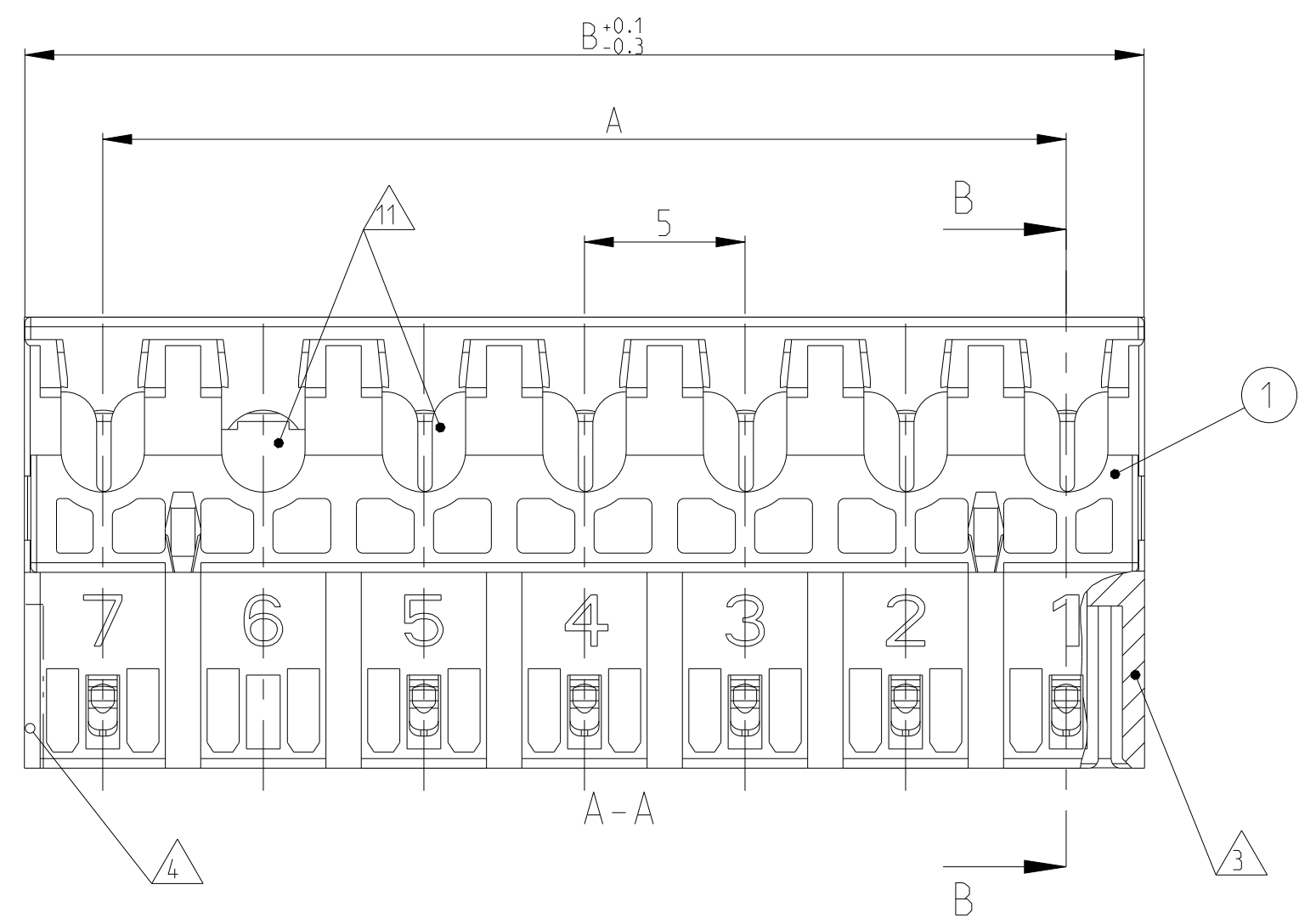
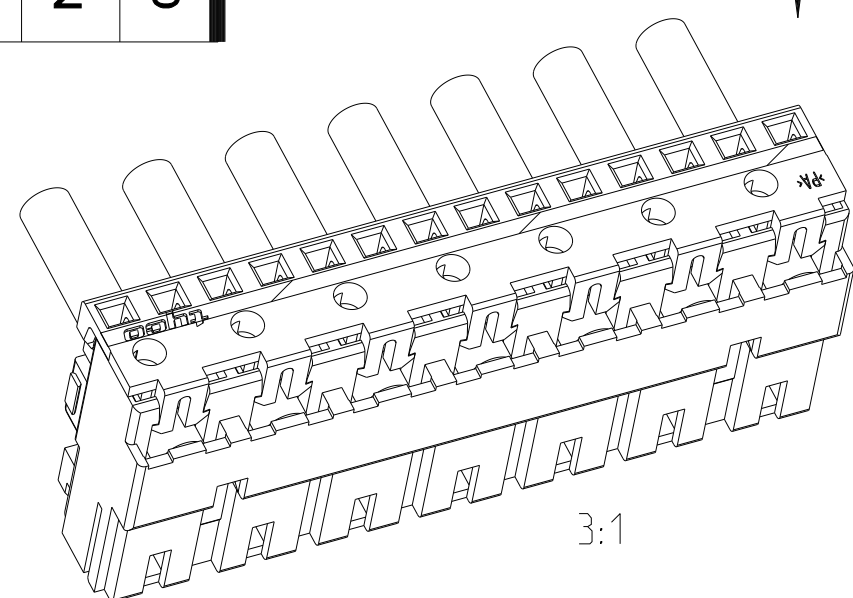
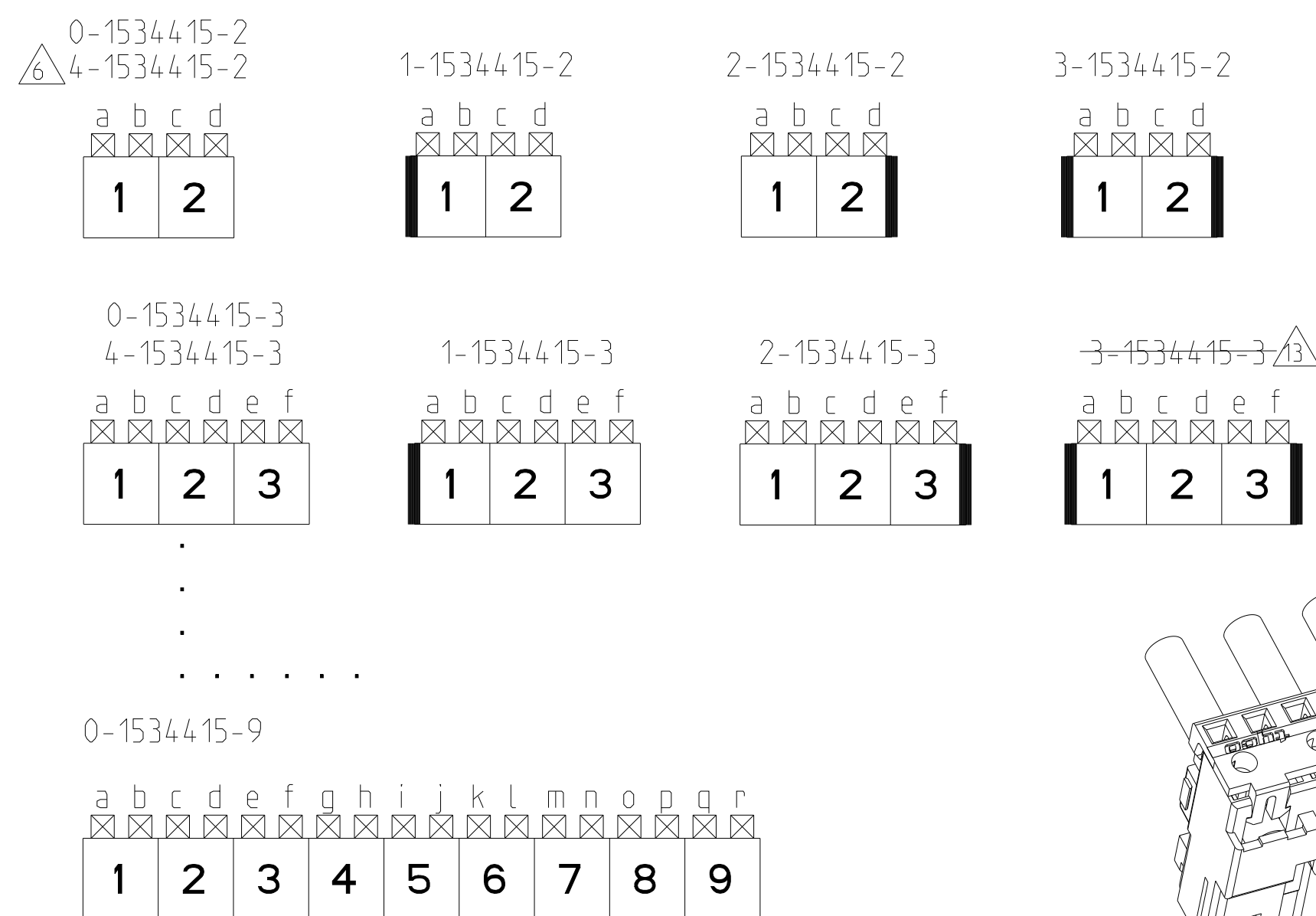




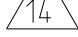
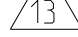


LOC	DIST	REVISIONS					
A1	-	P	LTR	DESCRIPTION	DATE	DWN	APPD
			D23	ECR-21-114072	22SEP2021	SM	FL
		rev	sym	2ECR-21-115341	28SEP2021	SM	FL
			D25	ECR-22-141077	03MAR2023	SM	FL
			D26	ECR-23-178155	15JUN2023	SP	FL





KEYING PLAN (VIEW Z)
Kodierschema (Ansicht Z)



- | | |
|---|---|
|  | RELEASED PART WITH PENDING AGENCY APPROVALS.
(REF. VDE ORDER N. 295903)
(REF. UL PROJECT N. 4790473412) |
|  | KEYING BETWEEN POSITIONS |
|  | UL94 VO AND GLOWWIRE TEST 750 °C WITHOUT
FLAME |
|  | PRELIMINARY PART NOT RELEASED FOR PRODUCTION |
|  | OBSOLETE |
|  | TE LOGO |

- △11 X...CAVITY LOADED WITH CONTACT
O...CAVITY WITHOUT CONTACT
X...Kammer mit Kontakt
O...Kammer ohne Kontakt
- △10 GLOW WIRE TEST 750 °C WITHOUT FLAME
Gluehdrahttest 750°C ohne Flamme
- △9 INCLUSIVE COPPER CLADDING:
Inclusive Kupferkaschierung:
- △8 PCB PREFERABLY CHAMFERED.
Leiterplatte vorzugsweise angefast.
- △7 SLOT FOR SIDE KEYING. △4 △4 △4
Schlitz fuer Seitenkodierung, △4 △4 △4 .
- △6 COLOUR MARKING ON TOP OF HOUSING OPTIONAL ON TERMINATION MACHINE
Farbmarkierung auf Gehäuseoberseite optional an Verarbeitungsmaschine
- MATING PART: PCB (WITH FRAMES ACC. RAST 2.5 E.G. PN 964 575/576)
TABHEADER PN 1 534 787/788
2 Passender Gegenstecker: Leiterplatten (mit Rahmen nach RAST 2.5 z.B.
964 575/576)
Tabwannen Nr. 1 534 787/788
- △4 SIDE KEYING, ON LAST CAVITY
Seitenkodierung, an letzter Kammer
- △3 SIDE KEYING, on CAVITY 1
Seitenkodierung, an Kammer 1
- 2 WIRE RANGE: 0.35-0.75 mm²
Drahtgrößenbereich: 0.35-0.75 mm²
- △1 KEYING RIBS; CUTTING WITH TERMINATION MACHINE POSSIBLE
Kodierrippe; Schneiden auf der Verarbeitungsmaschine möglich

THIS DRAWING IS A CONTROLLED DOCUMENT.		DWG. 130C12016 CHK. H. Karabiyik B. Schnaubelt 24 JAN2002 24 JAN2002		 TE Connectivity	
DIMENSIONS:		TOLERANCES UNLESS OTHERWISE SPECIFIED:		NAME	
mm	0 PLC ± 0.2 1 PLC ± 0.2 2 PLC ± 0.2 3 PLC \pm 4 PLC \pm	APVD T. Klanner PRODUCT SPEC 108-18780 APPLICATION SPEC 114-18458		AMP DUOPUG POWER FEMALE CONNECTOR (Standard Version) -	
	ANGLES $\pm 1^\circ$	WEIGHT		SIZE	CAGE CODE
MATERIAL	FINISH	CUSTOMER DRAWING		DRAWING NO	RESTRICTED TO
-	-	A 1		00779	-
				C=1534415	
				SCALE 5:1	SHEET 1 OF 2
				REV 026	

8

7

6

5

4

3

2

1

THIS DRAWING IS UNPUBLISHED.

RELEASED FOR PUBLICATION

2016

© COPYRIGHT 2016

TE Connectivity Germany GmbH

ALL RIGHTS RESERVED.

LOC

DIST

REVISONS

P

LTR

DESCRIPTION

DATE

DWN

APVD

rev_sym_1

rev_desc_1

rev_date

rev_dwn

rev_appr_1

rev_sym_2

rev_desc_2

rev_date

rev_dwn

rev_appr_2

rev_sym_3

rev_desc_3

rev_date

rev_dwn

rev_appr_3

rev_sym_4

rev_desc_4

rev_date

rev_dwn

rev_appr_4

GW EPT 750°C NO FLAME + UL94-V0

X

X

X

X

X

X

X

X

X

X

X

NATURE

10

40

49.9

3/4

-

-

2-2328644-0

17

X

X

X

X

X

X

X

X

X

X

X

NATURE

10

40

49.9

-

-

-

1-2328644-0

17

X

X

X

X

X

X

X

X

X

X

NATURE

9

40

44.9

-

-

-

-

0

0

X

X

X

X

X

X

NATURE

7

30

34.9

-

-

-

1-2328644-7

14

X

X

X

X

X

X

X

NATURE

7

30

34.9

-

-

-

2328644-7

14

X

X

X

X

X

NATURE

5

20

24.9

-

-

-

2328644-5

17

X

0

X

BLACK

3

10

14.9

2/3

-

-

1-2328644-3

14

X

X

X

NATURE

3

10

14.9

-

-

X

2328644-3

14

X

X

X

NATURE

3

10

14.9

-

X

-

5-1534415-3

X

X

NATURE

2

5

9.9

-

-

-

-

10

9

8

7

6

5

4

3

2

1

COLOR

POS.

DIM A

DIM B

KEYING

KEYING

KEYING

TE P/N

CAVITY LOADED

11

6

CONTACT

CuNiSi

TINNED

2

1

SEE TABLE
siehe Tabelle

Federleistengehaeuse

PA 66

NATUR/Natur

POS.

TE P/N

DESCRIPTION

MATERIAL

COLOUR/FINISH

GW EPT 750°C NO FLAME + UL94-V2

X

X

X

X

X

X

X

X

X

X

X

NATURE

10

45

49.9

3/4

-

-

2-1534415-0

X

X

X

X

X

X

X

X

X

X

X

NATURE

10

45

49.9

-

-

1-1534415-0

X

X

X

X

X

X

X

X

X

NATURE

9

40

44.9

-

-

0-1534415-9

X

X

X

X

X

X

X

X

NATURE

8

35

39.9

-

-

0-1534415-8

X

X

X

X

X

X

NATURE

7

30

34.9

-

-

0-1534415-7

X

X

X

X

X

NATURE

6

25

29.9

-

-

0-1534415-6

X

X

X

X

X

NATURE

5

20

24.9

-

-

0-1534415-5

X

X

X

X

NATURE

4

15

19.9

-

X

3-1534415-4

X

X

X

X

NATURE

4

15

19.9

3/4

X

X

2-1534415-4

X

X

X

X

NATURE

4

15

19.9

2/3

X

X

1-1534415-4

X

X

X

X

NATURE

4

15

19.9

-

-

0-1534415-4

X

X

X

RED

3

10

14.9

X

8-1534415-3

X

X

X

GREEN

3

10

14.9

X

7-1534415-3

X

X

X

NATURE

3

10

14.9

1/2

X

6-1534415-3

X

0

X

NATURE

3

10

14.9

-

-

4-1534415-3

X

X

X

3

10

14.9

X

X

3-1534415-3

13

X

X

X

NATURE

3

10

14.9

X

-

2-1534415-3

X

X

X

NATURE

3

10

14.9

-

X

1-1534415-3

X

X

X

NATURE

3

10

14.9

-

-

0-1534415-3

X

X

BROWN

2

5

9.9

-

-

4-1534415-2

6

X

X

NATURE

2

5

9.9

X

X

3-1534415-2

X

X

NATURE

2

5

9.9

X

-

2-1534415-2

X

X

NATURE

2

5

9.9

-

X

1-1534415-2

X

X

NATURE

2

5

9.9

-

-

0-1534415-2

10

9

8

7

6

5

4

3

2

1

6

POS.
Polzahl

DIM A

DIM B

16

4

3

PN
Bestell-Nr.

CAVITY LOADED

11

2

1

SEE TABLE
siehe Tabelle

KONTAKT

CuNiSi

TINNED

POS.

PN
Bestell-Nr.

DESCRIPTION
Beschreibung

MATERIAL

COLOUR/FINISH
Farbe/Oberflaeche

2

1

SEE TABLE
siehe Tabelle

Federleistengehaeuse

PA 6

6

NATUR/Natur

POS.

PN
Bestell-Nr.

DESCRIPTION
Beschreibung

MATERIAL

COLOUR/FINISH
Farbe/Oberflaeche

THIS DRAWING IS A CONTROLLED DOCUMENT.

DWN
H. Karabiyik
CHK
B. Schnaubelt
APVD
T. Klenner

13OCT2016
24JAN2002
24JAN2002

DIMENSIONS:
mm

0 PLC ±0.2
1 PLC ±0.2
2 PLC ±0.2
3 PLC ±
4 PLC ±
ANGLES FINISH

MATERIAL

-
-

TOLERANCES UNLESS
OTHERWISE SPECIFIED:

±0.2
±0.2
±0.2
±
±[°]

PRODUCT SPEC

108-18780

APPLICATION SPEC

116-18458

WEIGHT

-

CUSTOMER DRAW ING

NAME

AMP DUOPLUG POWER
FEMALE CONNECTOR (Standard Version)

SIZE

CAGE CODE

DRAWING NO

RESTRICTED TO

A 1

00779

©=1534415

SCALE

5:1

SHEET

2

OF

2

REV

U26

4805 (3/11)