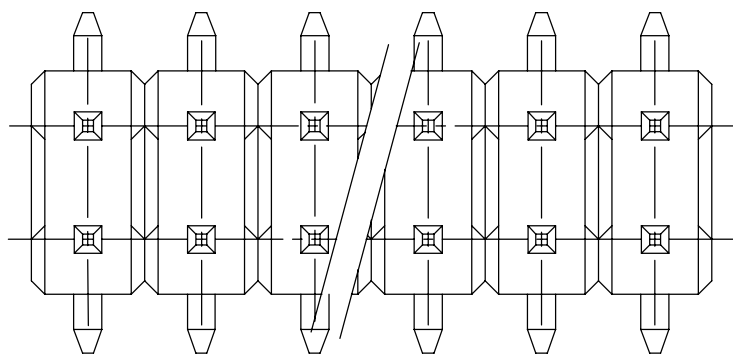


Technical drawing of a 6-hole plate. The drawing shows a top view of a rectangular plate with six holes arranged in a single row. The dimensions are as follows:

- Overall width:  $POLZ \times 2.54 = L - 1.0$
- Distance between hole centers:  $(L - 2.54)$
- Distance from the left edge to the center of the first hole: 2.54
- Distance from the center of the last hole to the right edge: 2.54
- Distance from the center of the last hole to the right edge of the plate: 2.8 REF
- Distance from the center of the last hole to the right edge of the plate: 1.3
- Distance from the center of the last hole to the right edge of the plate:  $\varnothing 0.63 \pm 0.05$




Technical drawing of a mechanical part with the following dimensions:

- Top horizontal dimension: 5 REF
- Top right horizontal dimension: 2.54
- Left vertical dimension: 5.8
- Right vertical dimension: 4.4 "F"
- Bottom horizontal dimension: 7.62  $-0.4$
- Bottom right dimension: "C"
- Bottom left dimension: 3° MAX.

Technical drawing of a rectangular plate with dimensions and internal features:

- Overall width:  $(L - 2.54)$
- Overall height:  $8.2$
- Internal width of the central section:  $1.8$
- Internal height of the central section:  $1.27$
- Internal width of the side sections:  $1.27$
- Internal height of the side sections:  $1.8$

KONTAKTSTIFT / CONTACT PIN	CuZn		2
STIFTGEHÄUSE / PIN HOUSING	PCT-GV	SCHWARZ / BLACK	1
BENENNUNG EINZELTEIL PART DESCRIPTION	WERKSTOFF MATERIAL	OBERFLÄCHE / FARBE SURFACE / COLOR	SI No

1471-9 (1/15)

P	LTR	DESCRIPTION	DATE	DWN	APVD
	—	SEE SHEET 1	—	—	—


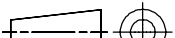


9 FOR PN 1-1241050-2 AND 1-1241050-3 PACKAGING REEL DIAMETER IS 380mm REF.

 OBSOLETE

9 FUR PN 1-1241050-2 AND 1-1241050-3 VERPACKUNGSRollenMESSER IST 380MM REF

<del>1-7</del>	<del>1-6</del>	<del>1-5</del>	<del>1-4</del>	1-3	1-2	<del>1-1</del>	1-0	<del>0</del>	-8	-7	-6	-5	-4	-3	-2	POS.
----------------	----------------	----------------	----------------	-----	-----	----------------	-----	--------------	----	----	----	----	----	----	----	------

THIS DRAWING IS A CONTROLLED DOCUMENT.		DWN 16-SEP-98 F. REICHARDT CHK 16-SEP-98 M. SCHAARSCHMIDT APVD - G. FELDMEIER PRODUCT SPEC 108-18012 APPLICATION SPEC - WEIGHT		<div>TE Connectivity Ltd.</div> AMPMODU II PIN HEADER PACKED IN BLISTER							
DIMENSIONS:  mm  		TOLERANCES UNLESS OTHERWISE SPECIFIED:  0 PLC ± 0.2 1 PLC ± 0.1 2 PLC ± 0.1 3 PLC ± - 4 PLC ± - ANGLES ± -						NAME			
MATERIAL  SEE TABLE SIEHE TABELLE		FINISH  SEE TABLE SIEHE TABELLE		SIZE A2		CAGE CODE 00779		DRAWING NO C=1241050		RESTRICTED TO  -	
CUSTOMER DRAWING				SCALE 1:1		SHEET 2 of 3		REV C3			

D

C

B

A

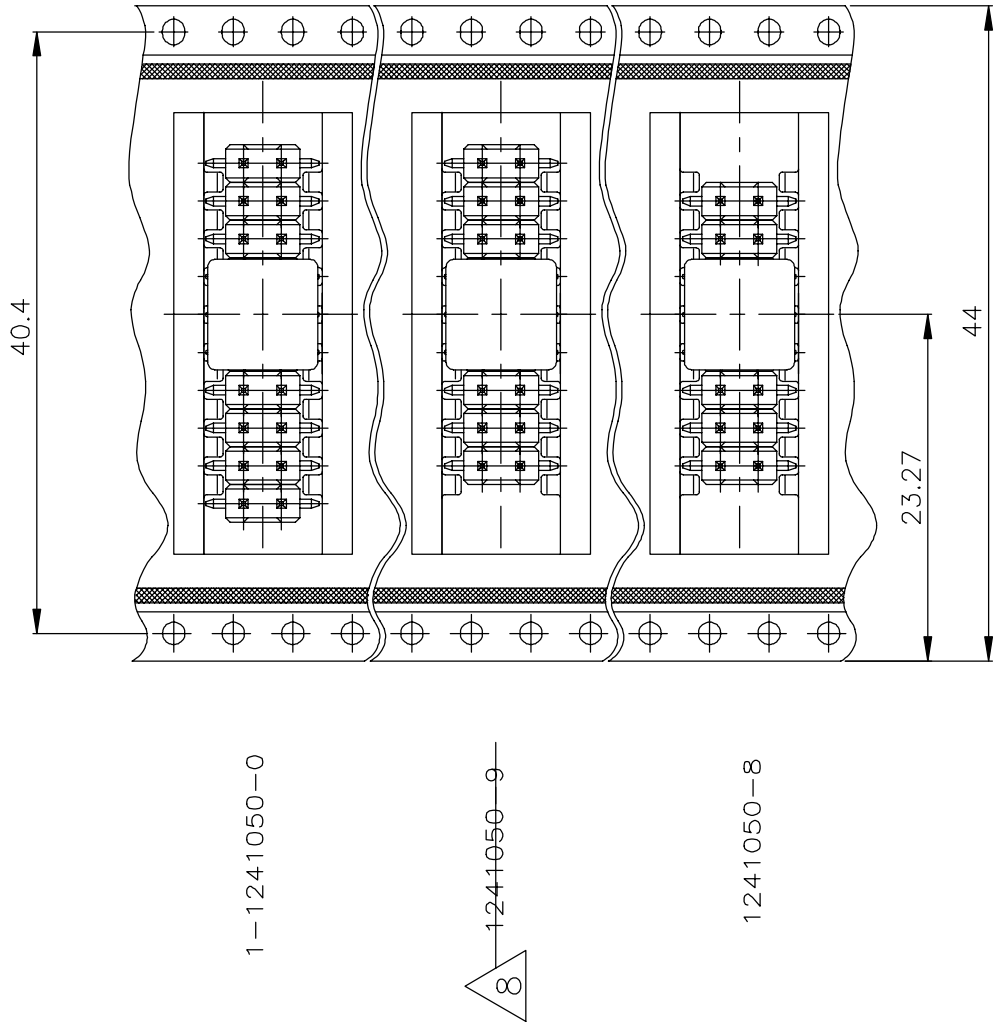
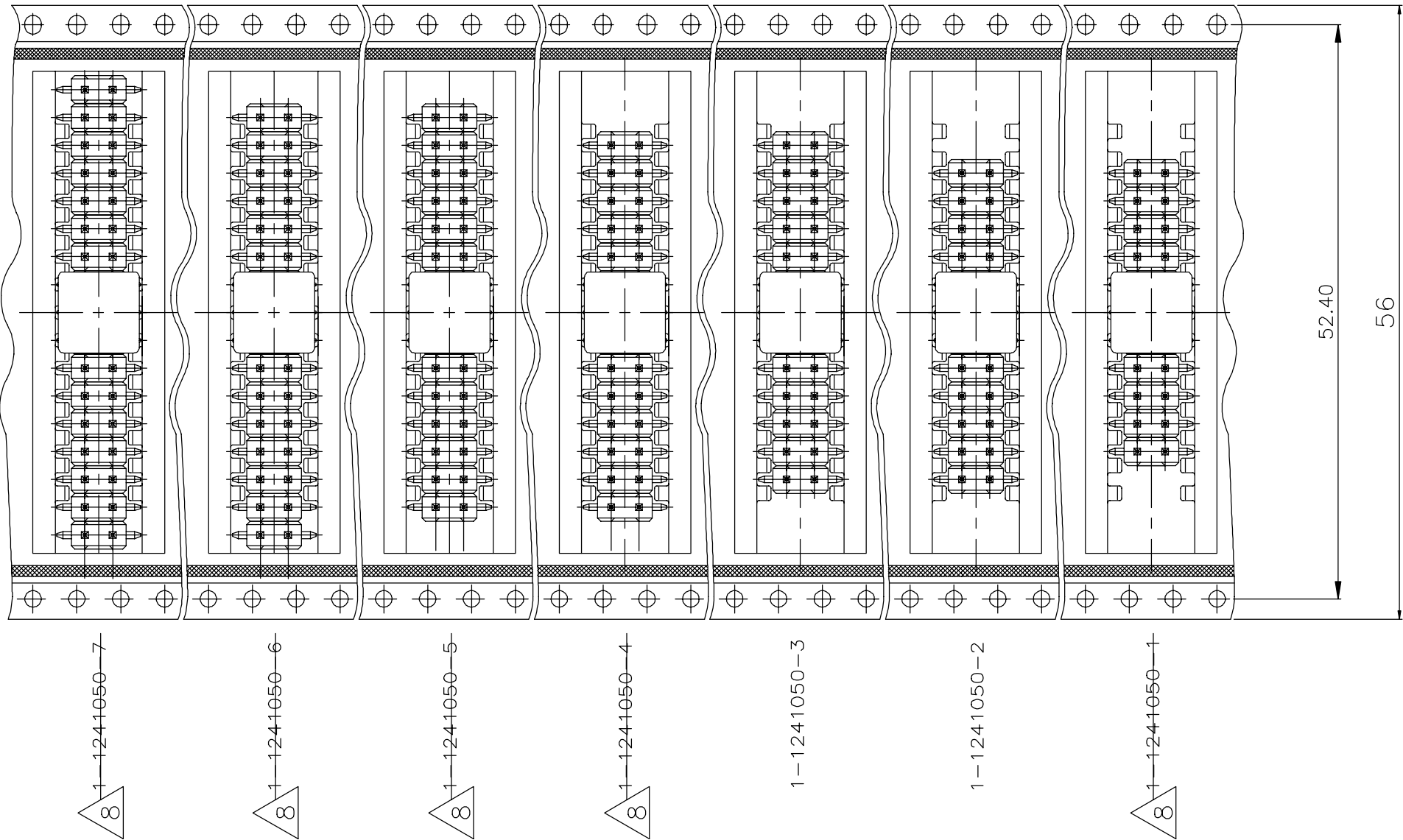
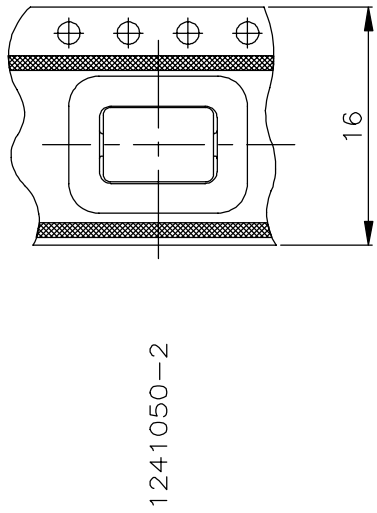
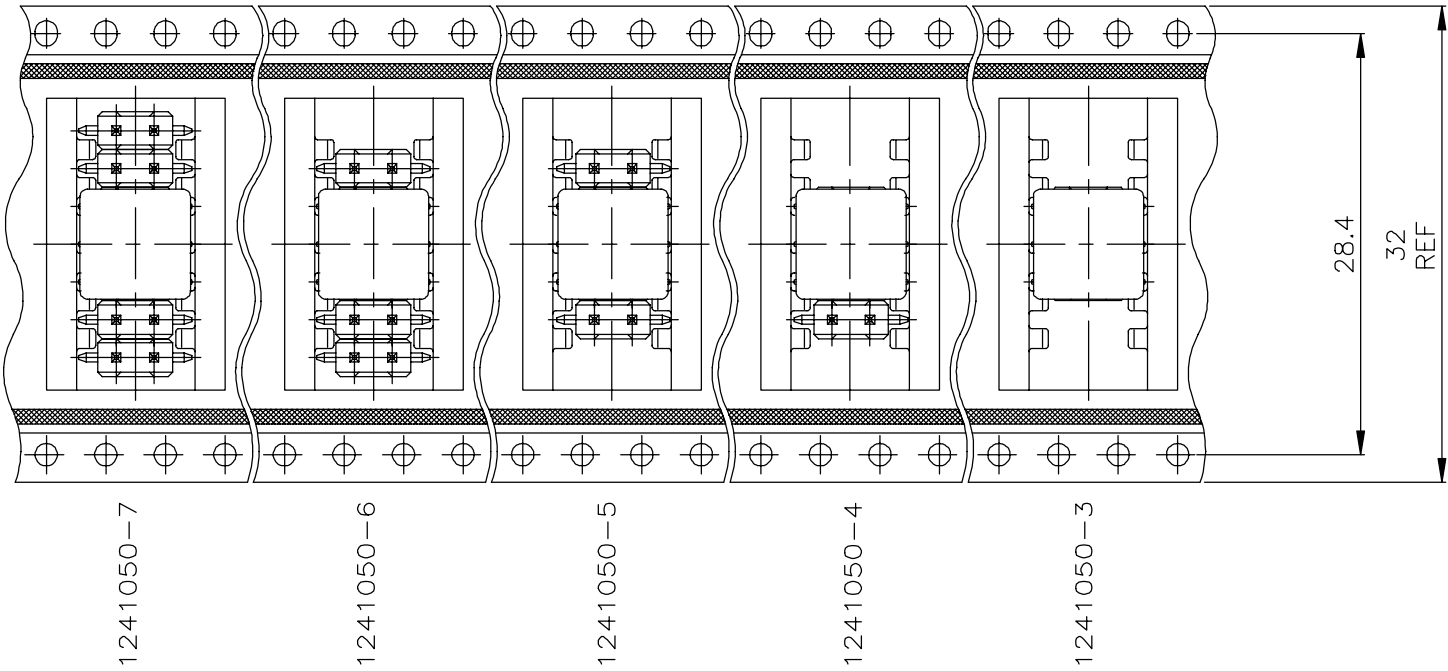
D


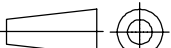
C

B

A

REVISIONS					
P	LTR	DESCRIPTION	DATE	DWN	APVD
	-	SEE SHEET 1	-	-	-



THIS DRAWING IS A CONTROLLED DOCUMENT.			DWN F.REICHARDT 16SEP1998		 TE Connectivity Ltd.						
			CHK M.SCHAARSCHMIDT 16SEP1998								
DIMENSIONS: mm		TOLERANCES UNLESS OTHERWISE SPECIFIED:		APVD G.FELDMEIER —	NAME  AMPMODU II PIN HEADER PACKED IN BLISTER						
		0 PLC ± 0.2		PRODUCT SPEC 108-18012							
		1 PLC ± 0.1		APPLICATION SPEC —							
		2 PLC ± 0.1									
3 PLC ± —		4 PLC ± —		SIZE			CAGE CODE	DRAWING NO	RESTRICTED TO		
MATERIAL		FINISH		WEIGHT			A2 00779 C=1241050			—	
—		—		CUSTOMER DRAWING			SCALE 1:1			SHEET 3 of 3	REV C3