

printed on 18 Aug 2023 09:08 (Eastern Standard Time) from US075751

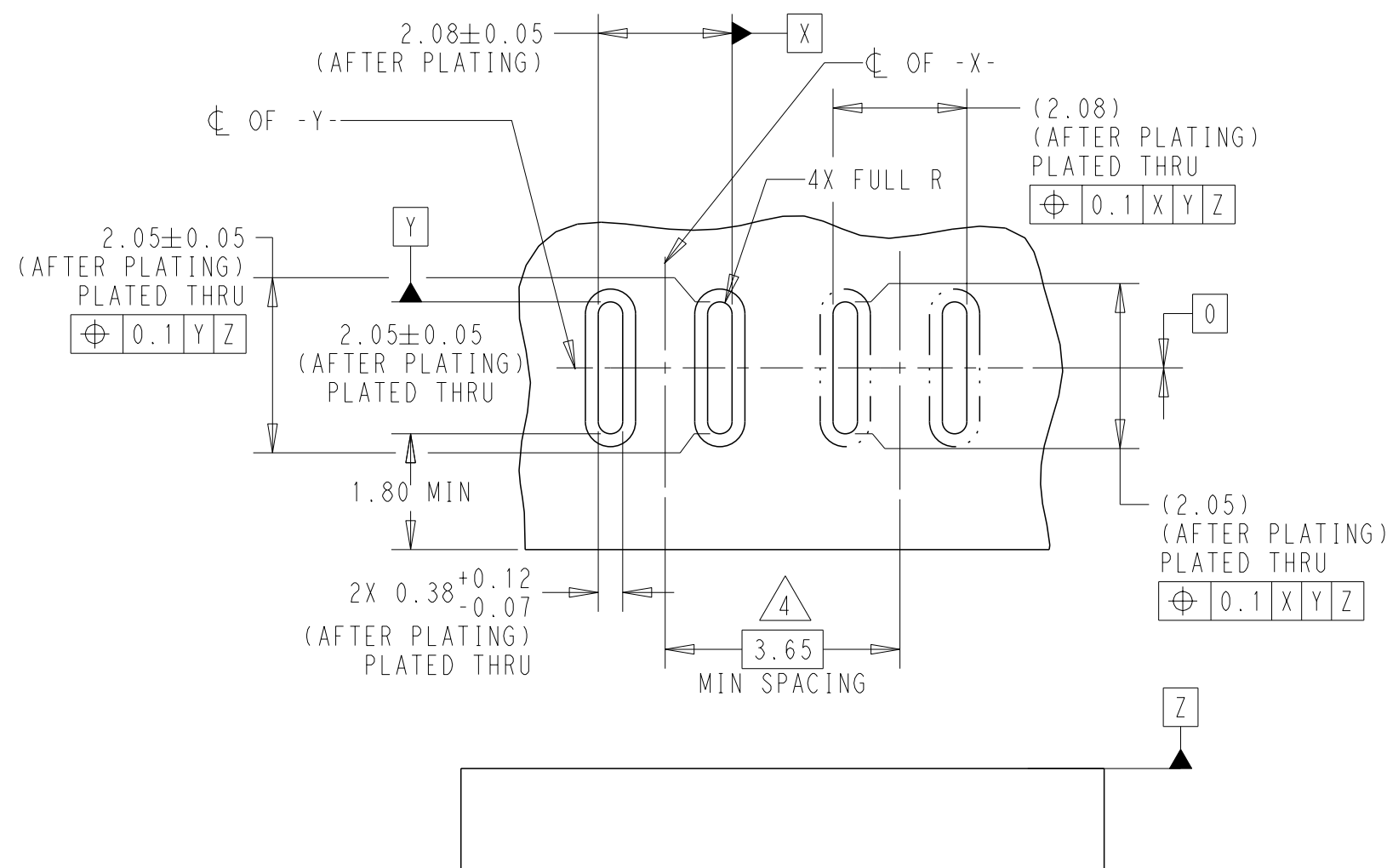
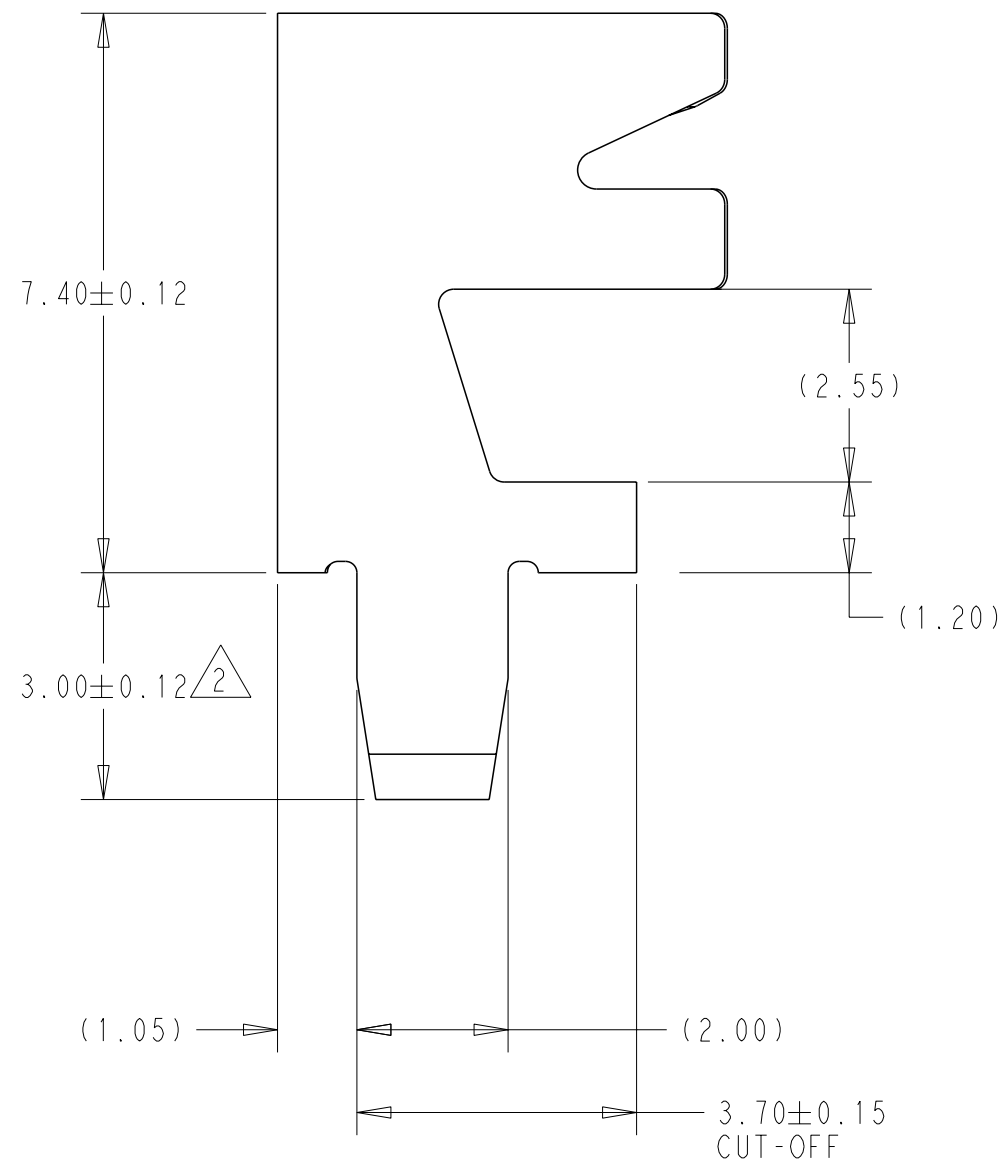
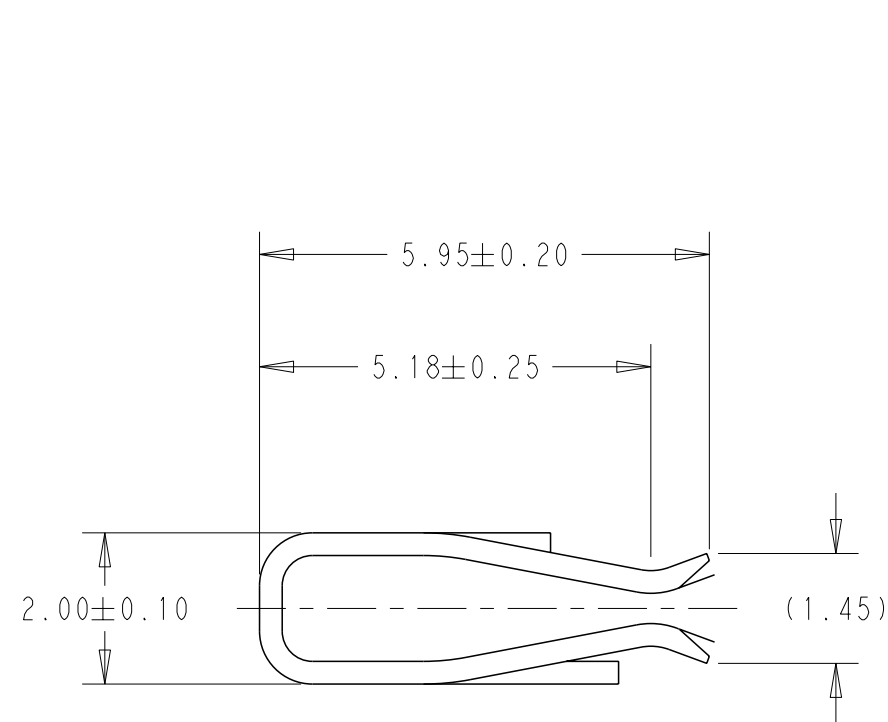
A

B

C

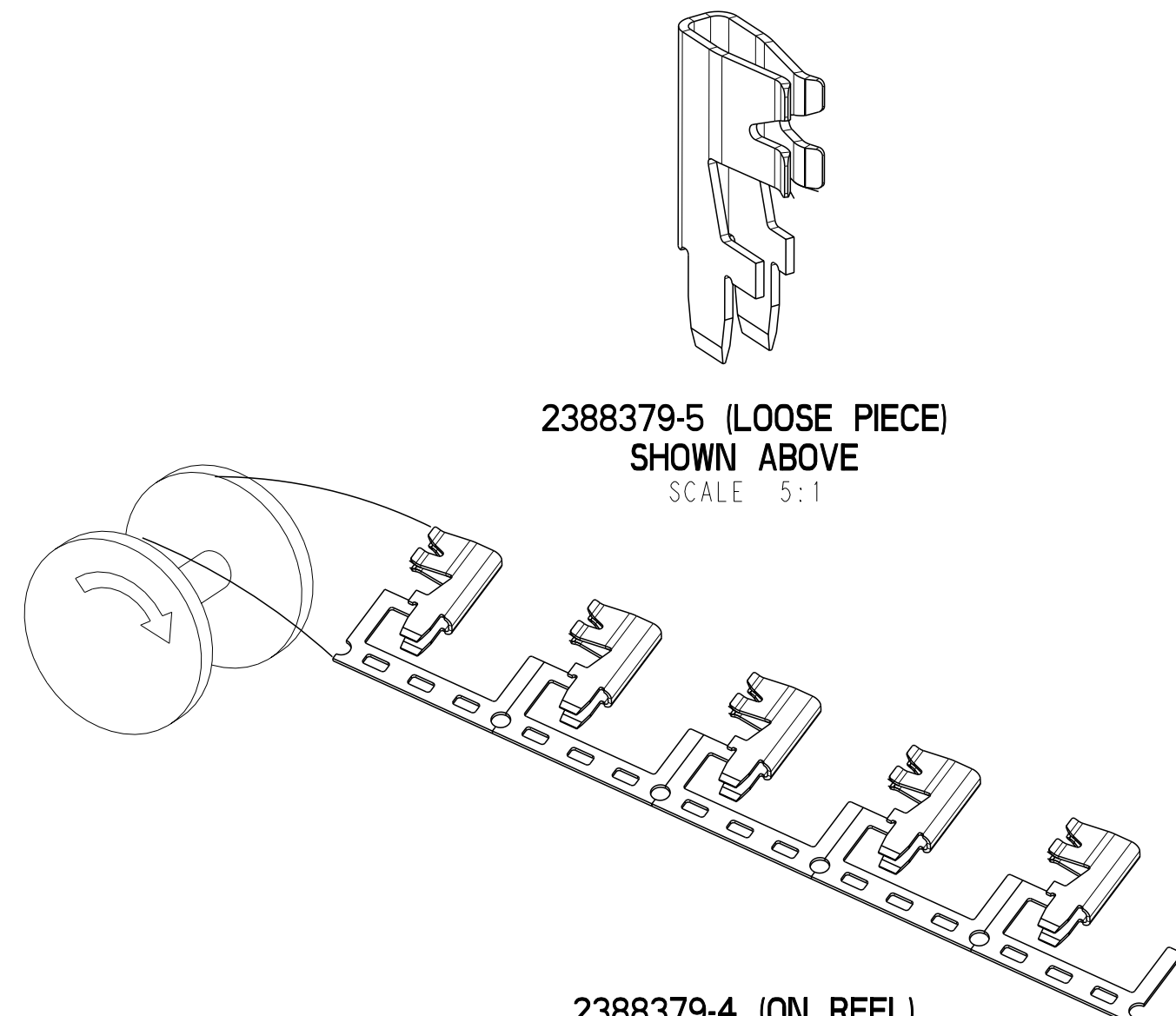
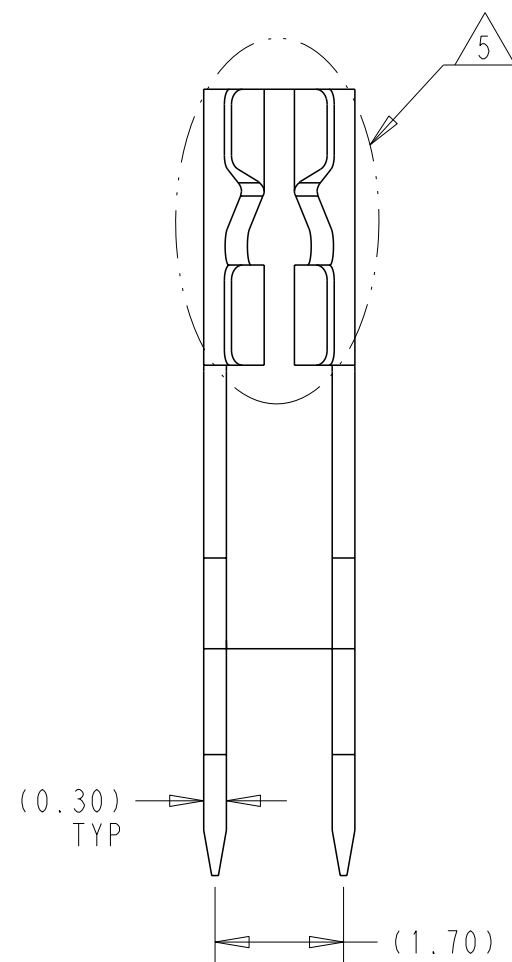
D

© 2021 TE Connectivity. All Rights Reserved.



RECOMMENDED PCB LAYOUT

SCALE 10:1



2388379-5 (LOOSE PIECE)
SHOWN ABOVE
SCALE 5:1

2388379-4 (ON REEL)
SHOWN ABOVE
SCALE 2:1

REVISIONS					
P	LTR	DESCRIPTION	DATE	DWN	APVD
	B	REVISED PER ECN-23-192478	04JAN2023	BKW	AF
	C	REVISED PER ECN-23-197170	06FEB2023	BKW	AF
	D	REVISED PER ECN-23-211368	05MAY2023	BKW	AF
	E	REVISED PER ECN-23-227018	18AUG2023	BKW	AF

- ALL DIMENSIONS SHOWN ARE REFERENCE UNLESS STATED OTHERWISE.
- SELECTIVE TIN PLATING APPLIED TO ALL SURFACES IN AREA SHOWN.
- DESIGNED TO BE INSERTED DIRECTLY INTO A PCB WITH AN INTERFERENCE FIT BETWEEN THE TERMINALS SOLDER LEGS AND THE RECOMMENDED PCB SLOT LAYOUT.
- PROPER TERMINAL SPACING CAN VARY DUE TO MANY FACTORS. TO VERIFY PROPER SPACING FOR YOUR APPLICATION PLEASE CONTACT TE PRODUCT ENGINEERING FOR COMPLETE ANALYSIS.
- PART IS LUBRICATED, AND LUBRICANT MAY BE PRESENT ON ENTIRE PART SURFACE. AVOID CONTACT WITH TERMINAL CONTACT ZONE DURING HANDLING TO AVOID REMOVING LUBRICANT FROM PART IN THIS AREA.
- THIS PRODUCT HAS NOT COMPLETED QUALIFICATION TESTING

LOOSE PIECED	NICKEL W/ SELECTIVE Sn	COPPER ALLOY	2388379-5
ON REEL	NICKEL W/ SELECTIVE Sn	COPPER ALLOY	2388379-4
CONFIGURATION	PLATING	MATERIAL	PART NUMBER
TE Connectivity			
RECEPTACLE TERMINAL, PCB, BATTERY CONNECTOR			
SIZE	CAGE CODE	DRAWING NO	RESTRICTED TO
A2	00779	C-2388379	-
CUSTOMER DRAWING			SCALE 10:1 SHEET 1 OF 1 REV E

THIS DRAWING IS A CONTROLLED DOCUMENT.	
DIMENSIONS:	TOLERANCES UNLESS OTHERWISE SPECIFIED:
mm	
	0 PLC ± 1
	1 PLC ± 1
	2 PLC ± 1
	3 PLC ± 1
	4 PLC ± 1
	ANGLES ±
MATERIAL	FINISH
SEE TABLE	SEE TABLE

DWN	28JAN2021
CHK	B. WEAVER
APVD	A. FORTIER
PRODUCT SPEC	108-160280
APPLICATION SPEC	114-160168
WEIGHT	-
CUSTOMER DRAWING	