

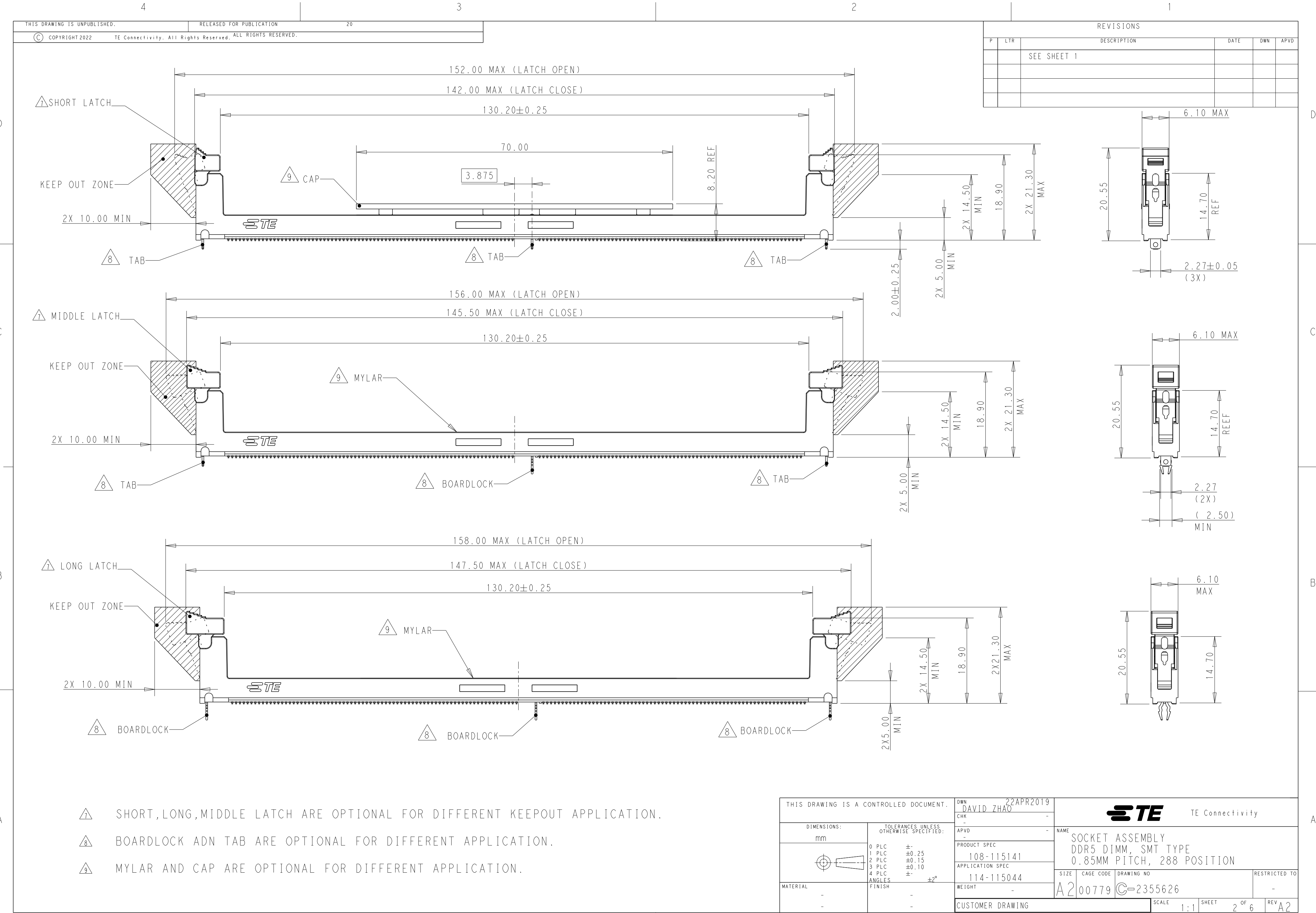


REVISIONS					
P	LTR	DESCRIPTION	DATE	DWN	APVD
24		CORRECT BL WIDTH DIM	20JUN2022	SS	-
A		RELEASE TO PRODUCTION	23AUG2022	SS	-
A1		ECR-22-150324	24AUG2022	SS	-
A2		ECR-23-187147	15SEP2023	AD	HL

THIS DRAWING IS A CONTROLLED DOCUMENT.		DWN 22APR2019 DAVID ZHAO		 TE Connectivity			
		CHK -					
DIMENSIONS: mm		TOLERANCES UNLESS OTHERWISE SPECIFIED:		NAME SOCKET ASSEMBLY DDR5 DIMM, SMT TYPE 0.85MM PITCH, 288 POSITION			
		APVD -					
		PRODUCT SPEC 108-115141					
		APPLICATION SPEC 114-115044					
		WEIGHT -					
MATERIAL - -		FINISH - -		SIZE A2	CAGE CODE 00779	DRAWING NO C=2355626	RESTRICTED TO -
CUSTOMER DRAWING				SCALE 1:1	SHEET 1 OF 6	REV A2	



4

THIS DRAWING IS UNPUBLISHED.

3

RELEASED FOR PUBLICATION

20

TE Connectivity. All Rights Reserved. ALL RIGHTS RESERVED.

2

1

REVISIONS

P	LTR	DESCRIPTION	DATE	DWN	APVD
		SEE SHEET 1			

DDR5 DIMM NAMING RULE

X - XXXXXXXX - X

LATCH TYPE&PICKUP TYPE

VOID: LONG LATCH & MYLAR 1

1: SHORT LATCH & MYLAR 1

2. MIDDLE LATCH & MYLAR 1

3: LONG LATCH & CAP

4: SHORT LATCH & CAP

5: MIDDLE LATCH & CAP

6: LONG LATCH W/O MYLAR & CAP

7: SHORT LATCH W/O MYLAR & CAP

8: MIDDLE LATCH W/O MYLAR & CAP

9: MIDDLE LATCH & MYLAR 2

XXXXXXX			
MANUFACTURE LOCATION		HOUSING&LATCH COLOR	
QD10	PHI11	HOUSING	LATCH
2355626	2474387	BLACK	BLACK
2355627	-	BLACK	NATURAL
2355628	-	BLACK	YELLOW
2355629	-	BLACK	BLUE
2355630	-	BLACK	GREEN
2355631	-	NATURAL	BLACK
2355632	2474391	NATURAL	NATURAL
2355633	-	NATURAL	YELLOW
2355634	-	NATURAL	BLUE
2355635	-	NATURAL	GREEN
2355636	-	YELLOW	BLACK
2355637	-	YELLOW	NATURAL
2355638	-	YELLOW	YELLOW
2355639	-	YELLOW	BLUE
2355640	-	YELLOW	GREEN
2355641	-	BLUE	BLACK
2355642	-	BLUE	NATURAL
2355643	-	BLUE	YELLOW
2355644	-	BLUE	BLUE
2355645	-	BLUE	GREEN
2355646	-	GREEN	BLACK
2355647	-	GREEN	NATURAL
2355648	-	GREEN	YELLOW
2355649	-	GREEN	BLUE
2355650	-	GREEN	GREEN

GOLD PLATING&HOLDDOWN TYPE

1: 30u"&3 TAB

2: 30u"&3 BOARDLOCK

3. 30u"&2 SIDETAB+1 BOARDLOCK

4: 15u"&3 TAB

5: 15u"& 3 BOARDLOCK

6: 15u"&2 SIDETAB+1 BOARDLOCK

DDR5 DIMM SPEC CHARACTERISTICS

(MORE SPEC,CHECK TE 108-115141)

1.MECHANICAL CHARACTERISTICS

1.1 INSERTION FORCE OF MODULE TO CONNENTOR: 106.8N MAX.

1.2 UNMATING FORCE: 19.77N MIN.

1.3 DURABILITY: PERFORM 25 CYCLES MATING AND UNMATING.

1.4 INSERTION FORCE OF CONNECTOR TO PCB: 35N MAX.

2.ELECTRICAL CHARACTERISTICS

1.1 WITHSTANDING VOLTAGE: 500VAC PER EIA-364-20,CONDITION 1.

1.2 INSULATION RESISTANCE: 1M OHMS MIN PER EIA-364-21,500VDC.

1.3 CURRENT CARRYING CAPABILITY AT 30°C TEMPERATURE: 1A MAX.

1.4 CONTACT RESISTANCE(LLCR):

INITIAL: 20 MILLIOHMS MAX,

FINAL: THE CHANGE IN LLCR BETWEEN THE READING AFTER STRESS AND THE INITIAL READING SHALL NOT EXCEED 20 MILLIOHMS.

3.ENVIRONMENTAL CHARACTERISTICS

1.1 TEMPERATURE LIFE: 105°C,120H PER EIA-364-17,METHOD A.

1.2 MECHANICAL SHOCK: 50G,11MILLISECONDS,3 DROPS IN EACH OF 6 DIRECTIONS PER EIA-364-27.

1.3 VIBRATION: 10 MINUTES PER DIRECTION FOR ALL 3 DIRECTIONS PER EIA-364-28, PROFILE SEE TE 108-115141.

1.4 THERMAL SHOCK: -55°C TO 85°C,5 CYCLES IN MATED CONDITION PER EIA-364-32,METHOD A,CONDITOIN I.

1.5 CYCLIC TEMPERATUREHUMILITY: 24 CYCLES BETWEEN 25°C AT 80% RH AND 65°C AT 50% RH PER EIA-364-31,METHOD III.

1.6 THERMAL CYCLING: 500 CYCLES IN MATED CONDITION BETWEEN 15°C AND 85°C.

1.7 MIXED FLOWING GAS:

FOR 15U"AU TYPE, 168H MIN TESTING PER EIA-364-65,CLASS IIA.

FOR 30U"AU TYPE, 240H MIN TESTING PER EIA-364-65,CLASS IIA.

4.REFLOW PROCESS CHARACTERISTICS

MOISTURE SENSITIVITY LEVEL OF PLASTIC MATERIALL IS LEVEL 1,

COULD WITHSTAND 260°C,10S LEAD FREE PROCESS ABILITY.

RECOMMENDED REFLOW PROFILE IS IN TE 108-115141.

NOTE:

MYLAR 1 LENGTH: L=70.0 ±1.0

MYLAR 2 LENGTH: L=128.0 ±1.0

10

PARTS TO BE MANUFACTURED AT QINGDAO PLANT;

11

PARTS TO BE MANUFACTURED AT PHILIPPINES PLANT;

THIS DRAWING IS A CONTROLLED DOCUMENT.

DWN DAVID ZHAO 22APR2019

CHK -

APVD -

PRODUCT SPEC 108-115141

APPLICATION SPEC 114-115044

MATERIAL -

TOLERANCES UNLESS OTHERWISE SPECIFIED:

0 PLC ±-

1 PLC ±0.25

2 PLC ±0.15

3 PLC ±0.10

4 PLC ±°

ANGLES ±2°

FINISH -

WEIGHT -

CUSTOMER DRAWING

TE Connectivity

NAME SOCKET ASSEMBLY
DDR5 DIMM, SMT TYPE
0.85MM PITCH, 288 POSITION

SIZE A2

CAGE CODE 00779

DRAWING NO C-2355626

RESTRICTED TO -

SCALE 1:1

SHEET 3 OF 6

REV A2

1471-9 (3/13)

C

3





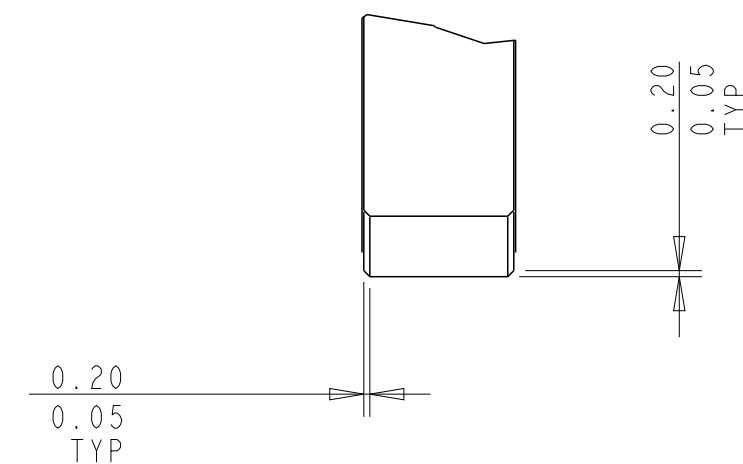
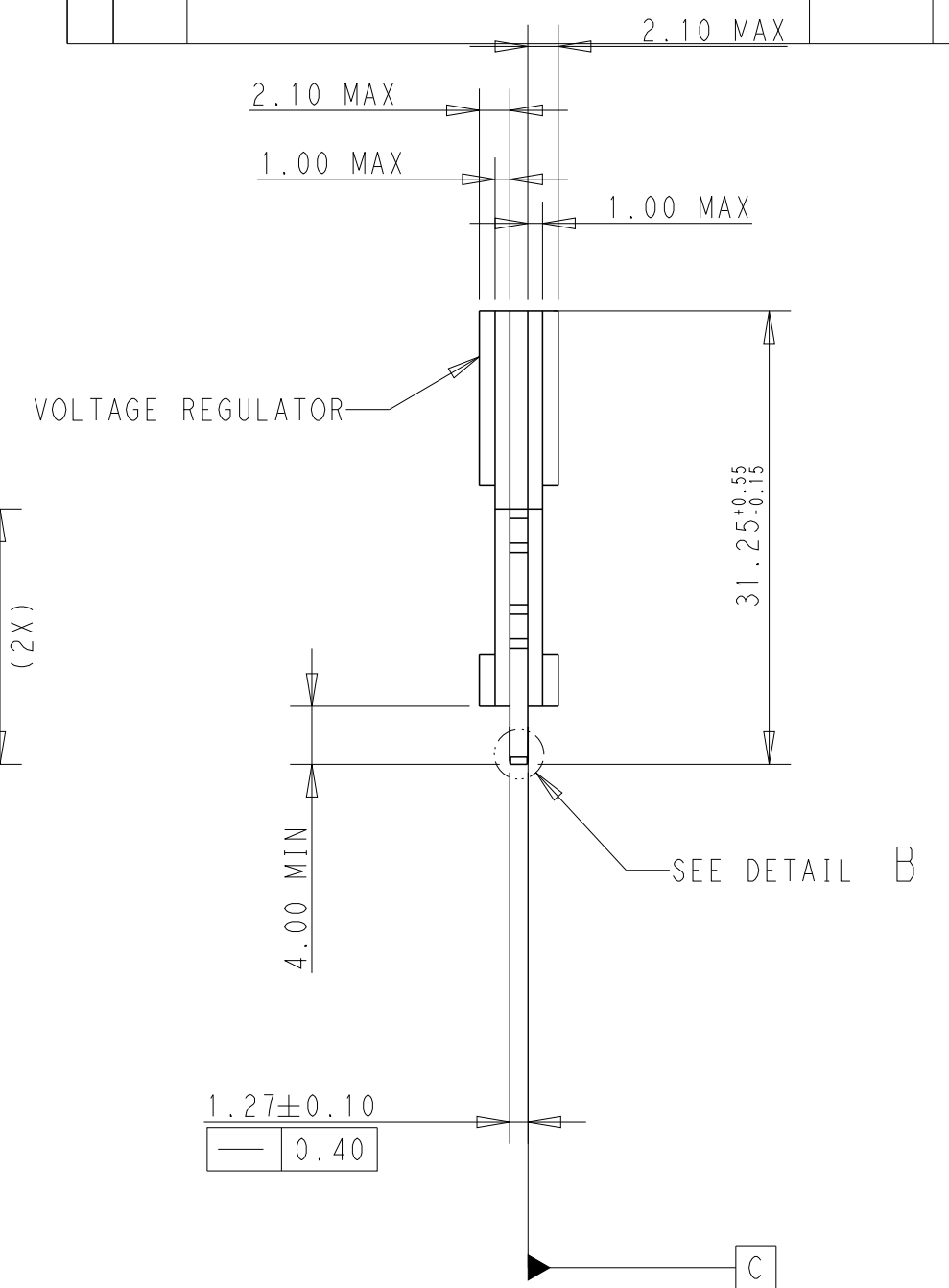
A





1471-9 (3/13)

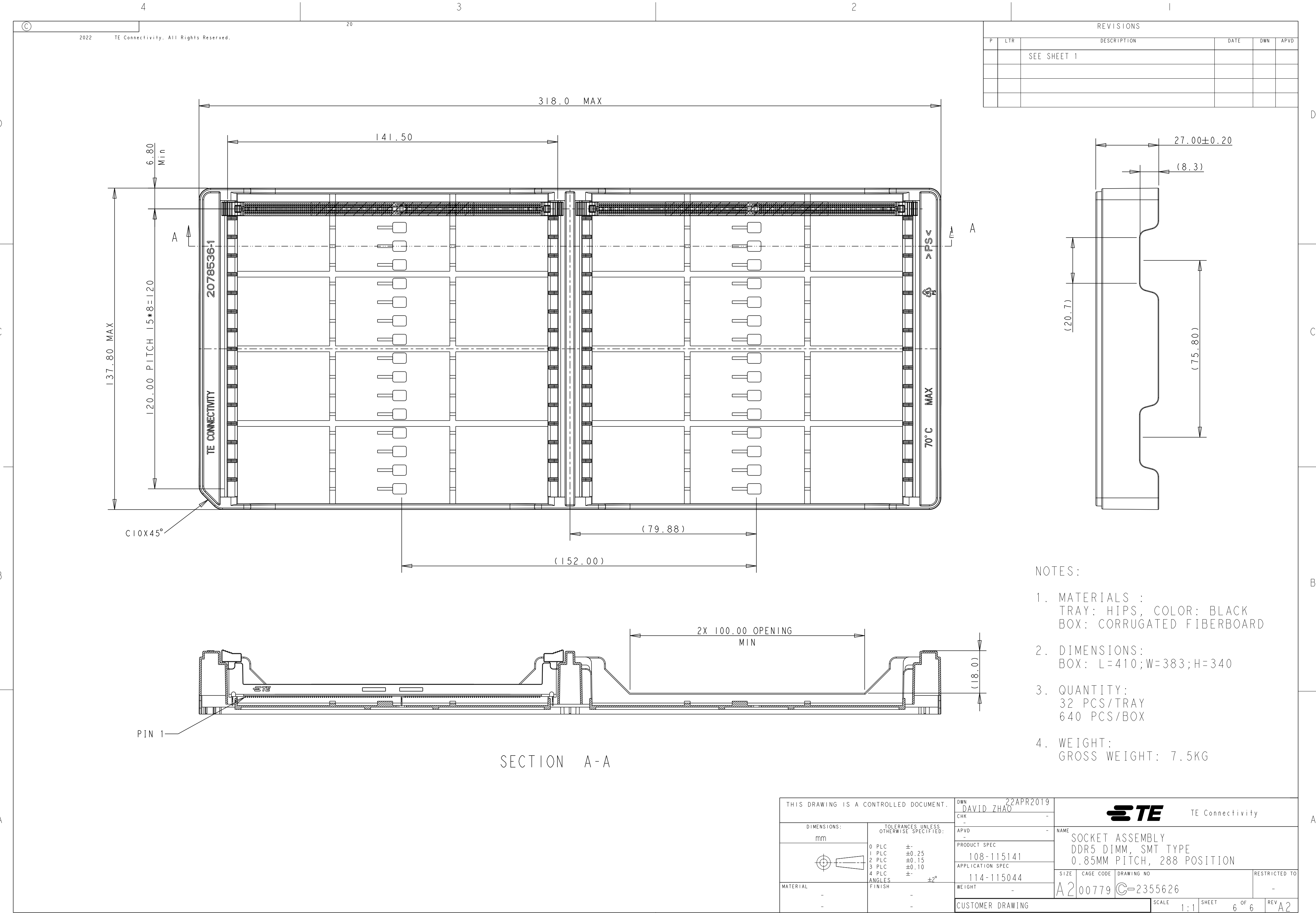


THIS DRAWING IS A CONTROLLED DOCUMENT.		DWN 22APR2019 DAVID ZHAO		 TE Connectivity	
DIMENSIONS: mm		TOLERANCES UNLESS OTHERWISE SPECIFIED:		NAME SOCKET ASSEMBLY DDR5 DIMM, SMT TYPE 0.85MM PITCH, 288 POSITION	
		0 PLC ±. 1 PLC ±0.25 2 PLC ±0.15 3 PLC ±0.10 4 PLC ±. ANGLES ±2°		PRODUCT SPEC 108-115141	
MATERIAL - -		FINISH - -		APPLICATION SPEC 114-115044	
		WEIGHT -		SIZE CAGE CODE DRAWING NO A2 00779 C-2355626	
CUSTOMER DRAWING				RESTRICTED TO -	
				SCALE 1:1 SHEET 4 OF 6 REV A2	




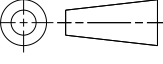
DETAIL C
SCALE 8:1

THIS DRAWING IS A CONTROLLED DOCUMENT.		DWN 22APR2019 CHK DAVID ZHAO -		 TE Connectivity	
DIMENSIONS: mm		TOLERANCES UNLESS OTHERWISE SPECIFIED: 0 PLC ±. 1 PLC ±0.25 2 PLC ±0.15 3 PLC ±0.10 4 PLC ±. ANGLES ±° FINISH		APVD - PRODUCT SPEC 108-115141 APPLICATION SPEC 114-115044 WEIGHT -	
		NAME SOCKET ASSEMBLY DDR5 DIMM, SMT TYPE 0.85MM PITCH, 288 POSITION		SIZE CAGE CODE DRAWING NO RESTRICTED TO A2 00779 C-2355626 -	
MATERIAL - -		CUSTOMER DRAWING		SCALE 1:1 SHEET 5 OF 6 REV A2	



REVISIONS					
P	LTR	DESCRIPTION	DATE	DWN	APVD
		SEE SHEET 1			

- NOTES:
- MATERIALS :
TRAY: HIPS, COLOR: BLACK
BOX: CORRUGATED FIBERBOARD
 - DIMENSIONS:
BOX: L=410;W=383;H=340
 - QUANTITY:
32 PCS/TRAY
640 PCS/BOX
 - WEIGHT:
GROSS WEIGHT: 7.5KG

THIS DRAWING IS A CONTROLLED DOCUMENT.		DWN	22APR2019	 TE Connectivity		
		CHK	DAVID ZHAO			
DIMENSIONS:		APVD	-	NAME		
mm		PRODUCT SPEC	-	SOCKET ASSEMBLY		
		APPLICATION SPEC	108-115141	DDR5 DIMM, SMT TYPE		
		114-115044	-	0.85MM PITCH, 288 POSITION		
MATERIAL		WEIGHT	-	SIZE	CAGE CODE	DRAWING NO
-		CUSTOMER DRAWING	-	A2	00779	C-2355626
		SCALE	1:1	SHEET	6 OF 6	REV A2