

1

2

3

4

A

A

B

B

C

C

D

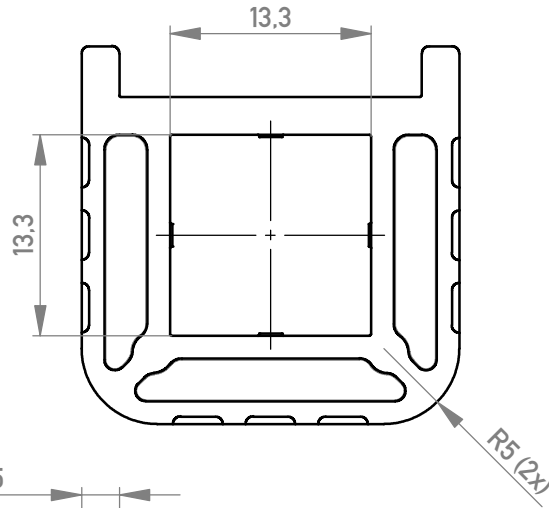
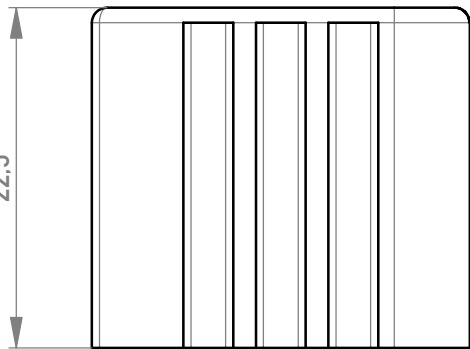
D

E

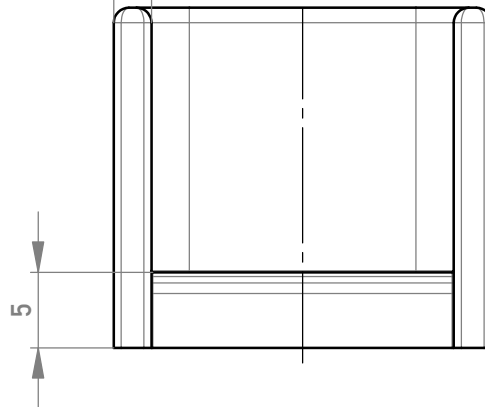
E

F

22,5

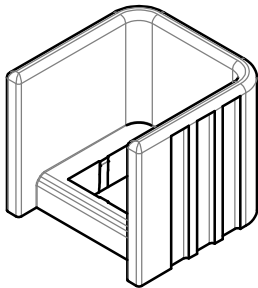


2,5

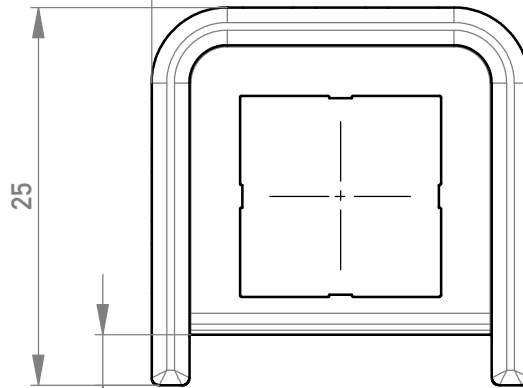


5

M 1:1 / scale 1:1



25



25

3,35

Verwendung mit PowerElement 225678-E, 225679-E.
Usage with Power Element 225678-E, 225679-E.

Weitergabe sowie Vervielfältigung dieses Dokuments, Verwertung und Mitteilung seines Inhalts sind verboten, soweit nicht ausdrücklich gestattet. Zuwiderhandlungen verpflichten zu Schadenersatz. Alle Rechte für den Fall der Patent-, Gebrauchsmuster- oder Geschmacksmustererträge vorbehalten. The reproduction, distribution and utilization of this document as well as the communication of its contents to others without express authorization is prohibited. Offenders will be held liable for the payment of damages. All rights reserved in the event of the grant of a patent, utility model or design.

Die deutsche Version dieser Zeichnung dient nur zur Erleichterung der Handhabung. Bei Abweichungen von dem englischen Original gilt das englische Original. The german version of this drawing has been offered for convenience only and may deviate from the english original. In case of any deviation the English version shall prevail.

Dimension no.			
b1	TE Migration	13.05.2023	Admin
Index	Modification Nr.	Date	Name

Tolerances ISO 2768-mH ISO 8015		 All Dimensions in mm
Created	24.11.2016	
Checked	20.08.2020	Name
Approved	20.08.2020	Fuchs
		Koch
		Koch
 TE Connectivity		

Scale	2:1	Tool-no.	
Material	PBT GF 30 grau		
Twisted and Contact Protection for Male PowerElements			
225796-E			C (1/1)
Class POWELM			A4