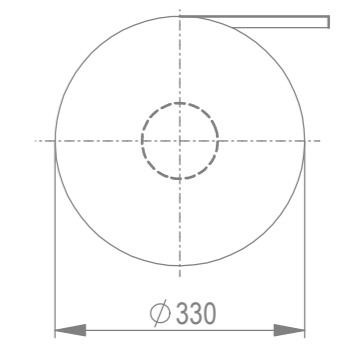
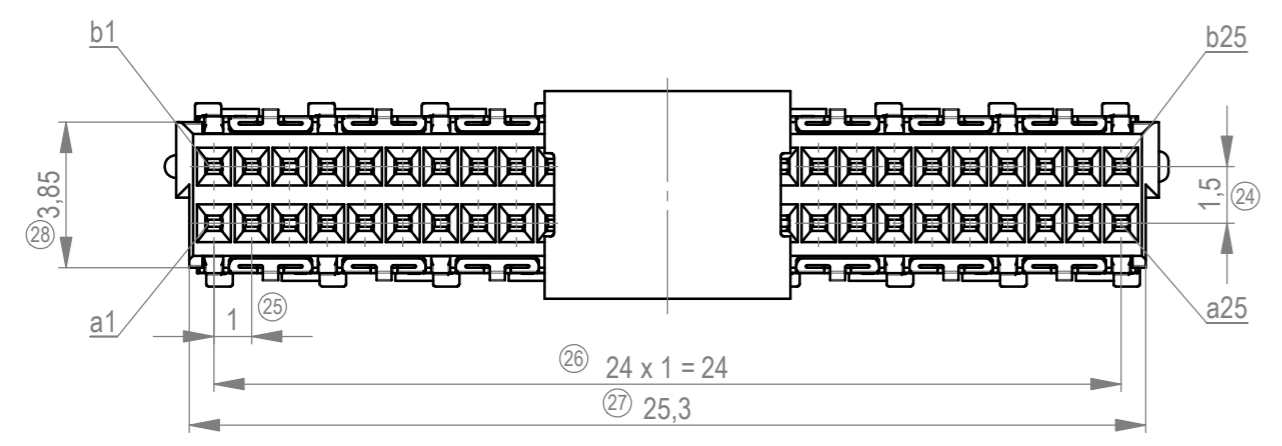
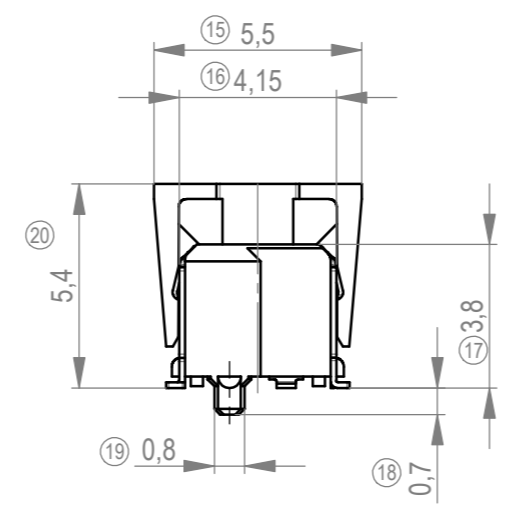
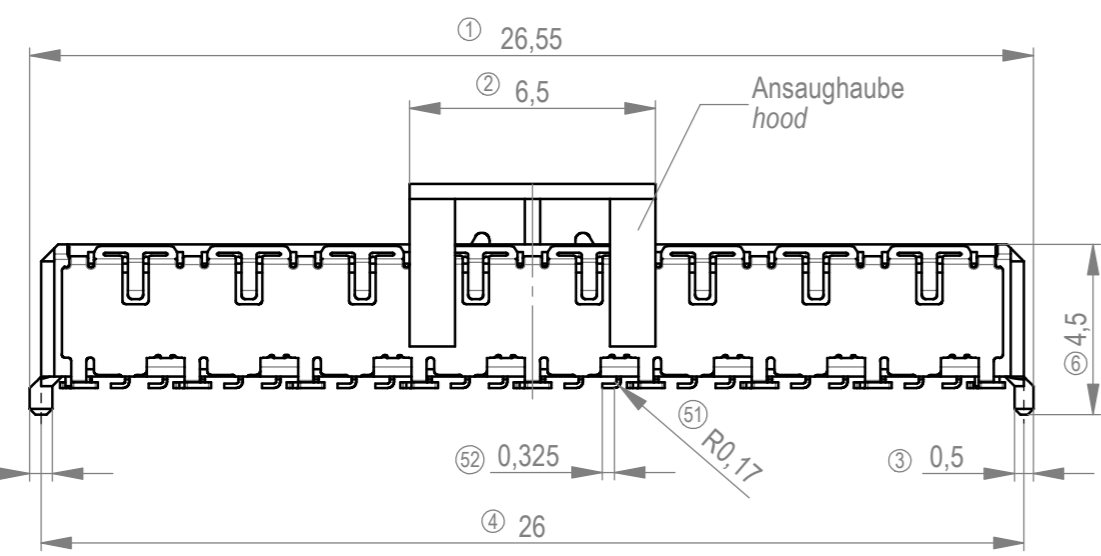
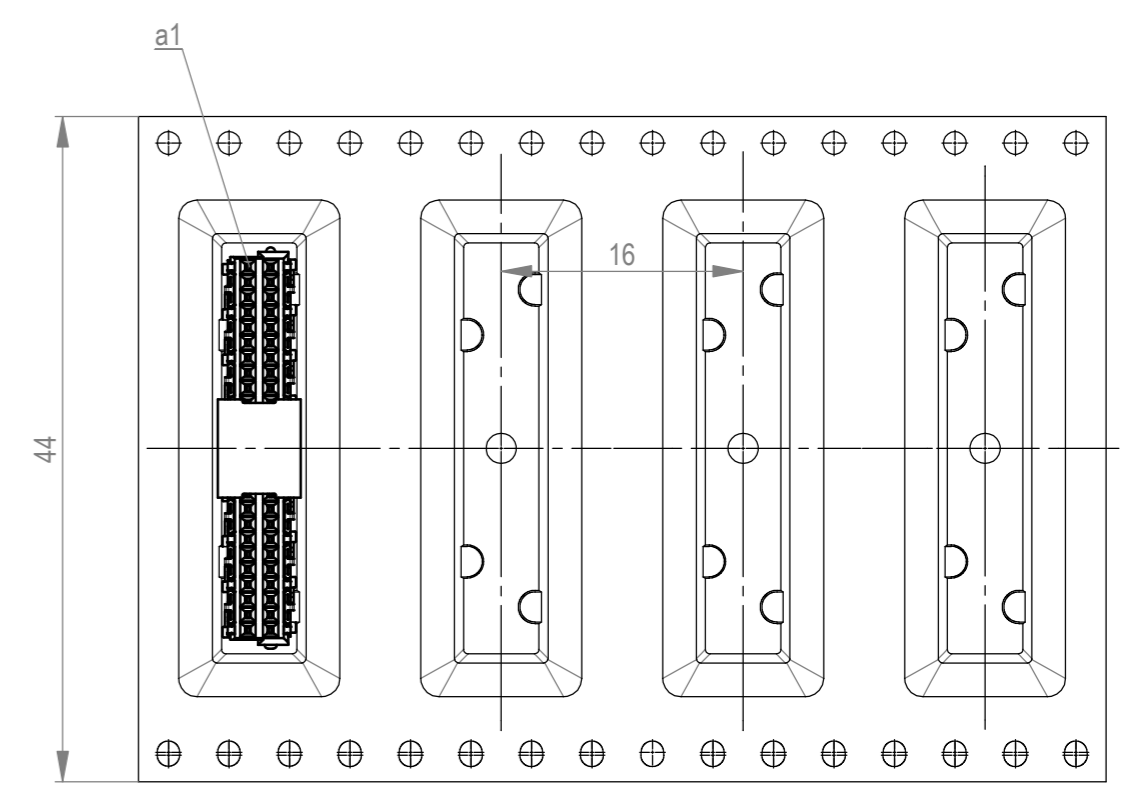


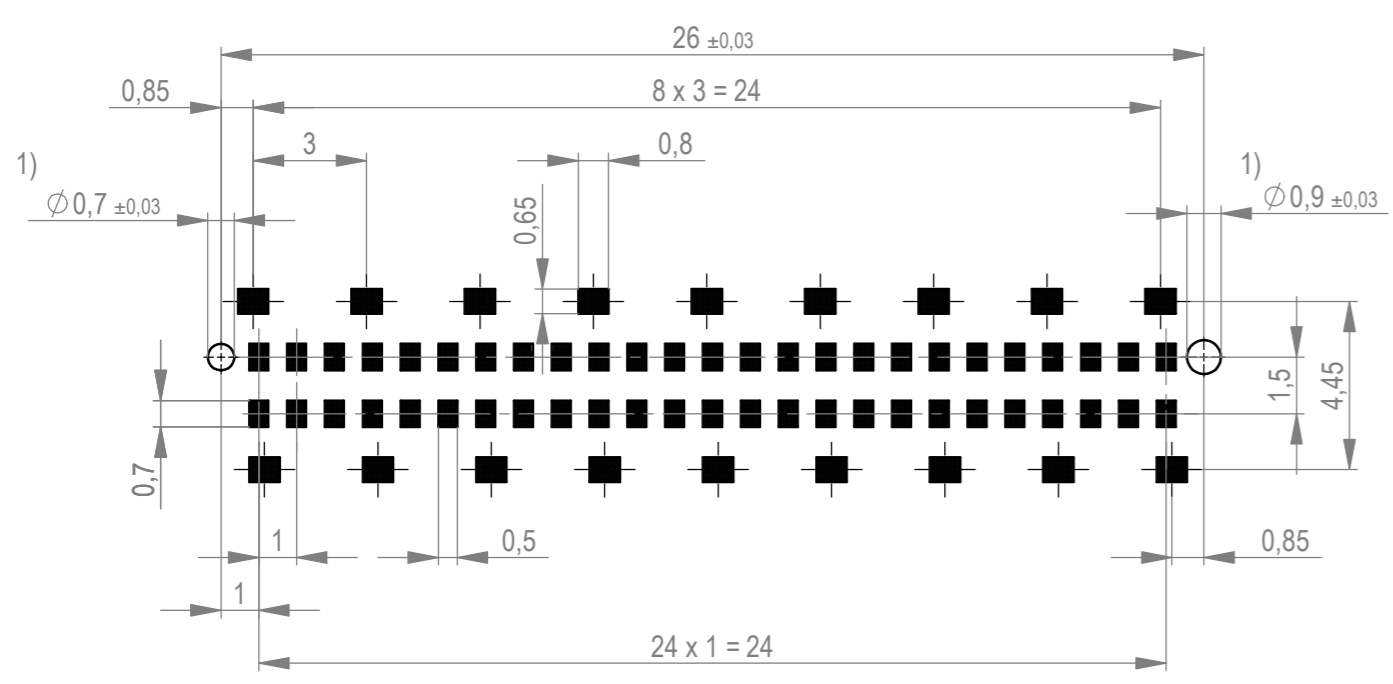
Verpackt im Gurt in Anlehnung an DIN IEC 60286-3
 tape on reel packaging according to DIN IEC 60286-3
 Verpackungseinheit: 400 Stück
 packaging unit: 400 pcs



Abspulrichtung - reel off direction →



Leiterplatten-Layout Vorschlag / PCB-Lay-out Proposal



1) Durchmesser des Bohrers / drill tool

Anforderungsstufe 1
 performance level 1

Kontaktbereich vergoldet
 mating area gold plating

Koplanarität der Anschlüsse $(\leq 0,1\text{mm}/2)$
 coplanarity area of termination $(\leq 0,1\text{mm}/2)$ (29)

Zeichnung Spezifikation siehe ERNI Dokument 5.3.17
 Drawing Specification according to ERNI Document 5.3.17

Material Kontaktstifte und Schirmbleche: / material contacts and shield: CuSn6
 Material Gehäuse: / material housing: LCP 30% GF, E 130 i Fa. Celanese
 Material Ansaughaube: / material hood: LCP 30% GF, E 130 i Fa. Celanese
 Oberfläche Lötanschlüsse: / plating solder connection: 1,5-3 μm Ni, 2-6 μm Sn mt
 Oberfläche Steckbereich, Kontakte und Schirmbleche: 1,5-3 μm Ni, 0,65 μm PdNi, 0,10 μm Au
 plating mating area, contacts and shielings: 1,5-3 μm Ni, 0,65 μm PdNi, 0,10 μm Au

Produktzulassung / product approval UL / CSA E84703

Siemens Art.-Nr. A5E423267-E52

Dimension no. 1 - 52 not assigned dimension no.: 7-14, 21-23, 31-35	Tolerances ISO 2768-mH ISO 8015		Scale 5:1 Material
Customer drawing: This Drawing is a controlled Document.	Subject to modification without prior notice. Drawing will not be updated.	<p>Female Straight 04mm SMT 50p Standard 2row</p> <p>C-144662-E</p> <p>CR A2</p>	
TE Connectivity			
k1	18.05.2023	Index	Date
Class		MSPEED	

Wskępkę sowie Verfertigung dieses Dokuments, Vorwiegend und Messung eines Items sind
 verboten, wie nicht ausdrücklich gestattet. Zuwiderhandlungen verpflichten zu Schadenersatz.
 All Rights reserved for the Patent. Copying or reproduction of any part of this drawing without
 of its contents to others without express authorization is prohibited. Offenders will be held liable for the
 payment of damages. All rights reserved for the patent, utility model or design.
 Die deutsche Version dieser Zeichnung dient zur Erleichterung der
 Handlung. Bei Abweichungen vom englischen Original gilt das
 englische Original. All dimensions in this drawing are given in millimeters unless otherwise
 and any deviation from the original.
 In case of any deviation from the original.