

CST206-1A

Description:

Designed for switching power supply applications, Triad current sense transformers are used to detect the current passing through a conductor. These transformers are very reliable and operate over the frequency range of 20 kHz-200 kHz.

Electrical Specifications (@25C)

| ET VμSEC REF 20kHz | Turns Count | Min. Ind. mH | DCR Max. Ω | Pri. Amps |
|-----------------------|----------------|-----------------|------------|-----------|
| 2000 | 100 | 14.0 | .580 | 110.0 RMS |

1. Operating Temperature: -40°C to +85°C
2. Storage Temperature: -50°C to +95°C

Safety:

These current sense transformers are constructed of UL rated 130°C materials.

Dimensions:

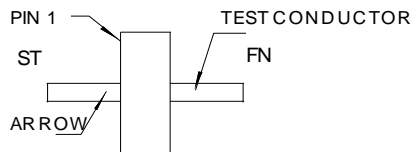
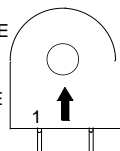
| A Min | B Max | C Ref | D Ref | E Ref | F Max | G Max | H Dia. Pins |
|----------|----------|----------|----------|----------|----------|----------|----------------|
| .360 | 1.225 | .700 | .127 | .500 | .400 | 1.075 | .045 |

Units: In inches

Technical Notes:

1. Derate ET product by 32% for 50 kHz, 52% for 100Hz and 50% for unidirectional operation.
2. Rated primary current renders approximately 40°C temp. rise.
3. Maximum recommended terminating resistance of 1 ohm per turn.
4. Primary is inserted through hole in casting.

1. START OF TEST CONDUCTOR TO HAVE THE SAME POLARITY AS PIN 1
2. DECAL ARROW ON CASE TO INDICATE POLARITY



POLARITY DETAIL TOP VIEW

RoHS Compliance: As of manufacturing date February 2016, all standard products meet the requirements of 2015/863/EU, known as the RoHS 3 initiative.

*Upon printing, this document is considered "uncontrolled". Please contact Triad Magnetics website for the most current version. For soldering and washing information please see <http://www.triadmagnetics.com/faq.html>

