



STRADA-2X2MX-VSM – More power with less costs

STRADA-2X2-MX-VSM is the latest addition to LEDiL's 2X2MX family released earlier this year. Standardized module based footprint allows easy fitting, future-proof luminaire construction and mixing with other modules inside the same product family. Symmetrical and wide square-shaped beam makes it ideal choice for lighting wide outdoor areas such as parking lots and streets. STRADA-2X2MX-VSM is designed for multi-crystal super high power LEDs, packing enough power to achieve feasible low pole area light with just a single module.

FEATURES

- Symmetrical wide square beam (IESNA Type V Short)
- Good luminance uniformity
- High efficiency (94% typ.) optical design
- Typical luminaire classifying IESNA "Semi Cutoff" or G1-G2 luminous intensity class (EN13201)
- For Super high-power LEDs up to 7070 packages

TYPICAL APPLICATIONS

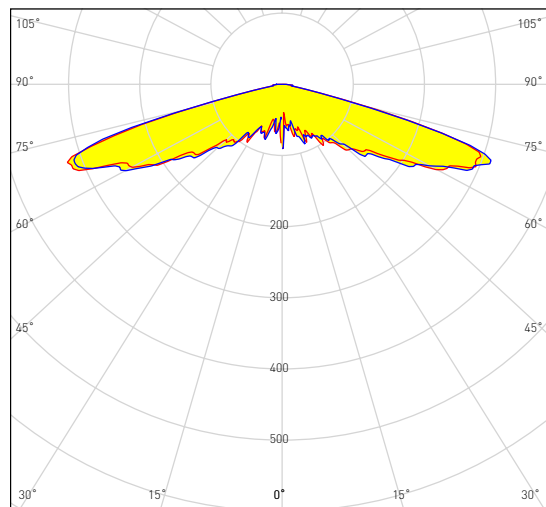
- Wide area lighting
- Pedestrian areas
- Parking lots
- Street lighting



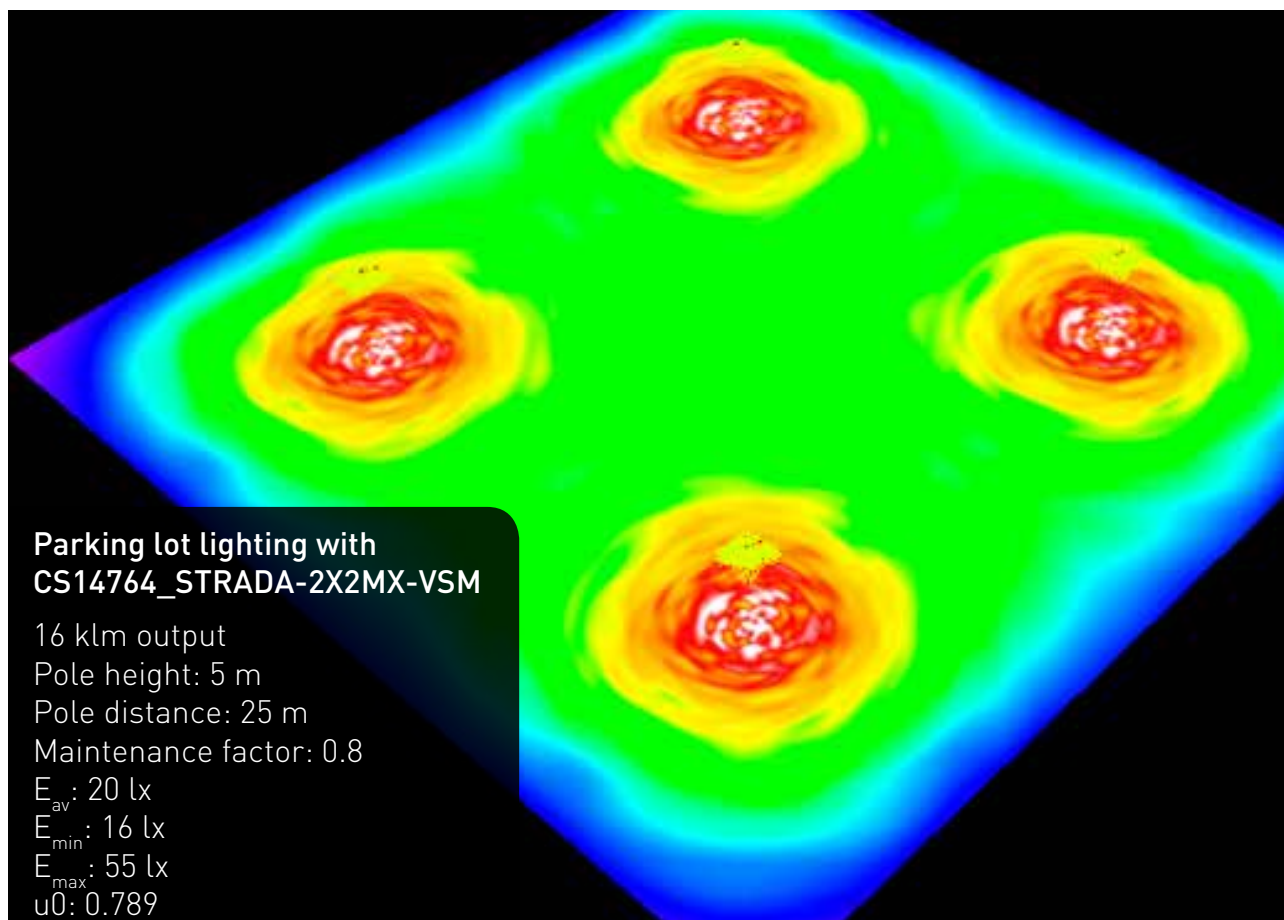
CS14764_STRADA-2X2MX-VSM

TECHNICAL SPECIFICATIONS

- Height: 13.4 mm
- Dimensions: 90 x 90 mm
- Typical efficiency: 94%
- Precision-molded from optical grade PMMA – UL94 HB rated material with operating rating -40°C to +80°C



DESIGN EXAMPLE



ORDERING INFORMATION

CS14764_STRADA-2X2MX-VSM

Consult www.ledil.com for ordering codes and latest product specifications, which may vary by LED