

CS. | Lever latches with key

Lock, zinc alloy



- 1
- 2
- 3
- 4
- 5
- 6
- 7
- 8
- 9
- 10
- 11
- 12
- 13
- 14
- 15
- 16
- 17
- 18

STATOR

Brass-plated zinc alloy.

ROTOR

Chrome-plated zinc alloy.

FRONT PLATE

Stainless steel.

NUT

M19x1 in brass.

FLAT SPRING WASHER

Zinc-plated steel (only for l1=13 and 16 mm),

INTERNAL TOOTHED WASHER

Zinc-plated steel.

CLOSING LEVER

Zinc-plated steel, thickness 2.5 mm.

Assembly by means of hexagon nut M6x0.75 for l1=13, 16 and 18 mm, assembly with screw M5x5 for l1=20 mm or with screw M5x8 for l1=25 and 30 mm.

TWO KEYS

Nickel-plated brass, removable in two positions at 180°.

ROTATION

180°.

STANDARD EXECUTIONS

- **CS.**: lock with 400 different combinations. Each lock has a couple of keys with different combination.

- **CSU.**: lock with one combination. All locks have the same combination and can be opened with the same key.

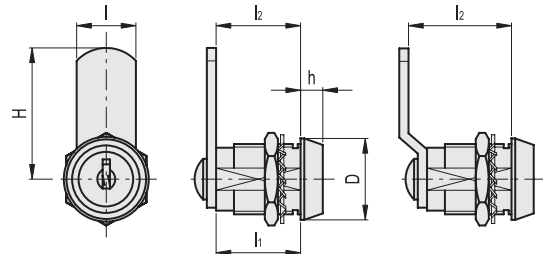
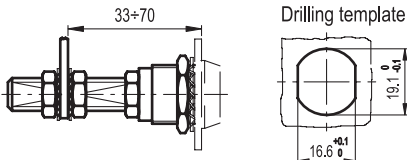
SPECIAL EXECUTIONS AND ACCESSORIES

- Closing levers in other dimensions.

- Brass threaded extension for prolonged positioning of the lever, only for stator lengths l1 = 25 and 30 mm (code 421137 C.PQ M5/58).



Conversion Table 1 mm = 0,039 inch					
H		l1		l2	
mm	inch	mm	inch	mm	inch
32	1.26	13	0.51	13	0.51
35.5	1.40	16	0.63	16	0.63
		20	0.79	18	0.71
		25	0.98	20	0.79
		30	1.18	21	0.83
				25	0.98
				30	1.18
				35	1.38



METRIC

CS.

Code	Description	D	H	l	l1	l2	h	△
421411	CS.13-32-13	23	32	16	13	13	5	41
421413	CS.16-32-16	23	32	16	16	16	5	47
421415	CS.20-32-20	23	32	16	20	20	5	55
421417	CS.25-32-25	23	32	16	25	25	5	64
421419	CS.30-32-30	23	32	16	30	30	5	73
421431	CS.13-36-18	23	35.5	16	13	18	5	43
421433	CS.16-36-21	23	35.5	16	16	21	5	49
421435	CS.20-36-25	23	35.5	16	20	25	5	57
421437	CS.25-36-30	23	35.5	16	25	30	5	66
421439	CS.30-36-35	23	35.5	16	30	35	5	75

CSU.

Code	Description	D	H	l	l1	l2	h	△
421451	CSU.13-32-13	23	32	16	13	13	5	41
421453	CSU.16-32-16	23	32	16	16	16	5	47
421455	CSU.20-32-20	23	32	16	20	20	5	55
421457	CSU.25-32-25	23	32	16	25	25	5	64
421459	CSU.30-32-30	23	32	16	30	30	5	73
421471	CSU.13-36-18	23	35.5	16	13	18	5	43
421473	CSU.16-36-21	23	35.5	16	16	21	5	49
421475	CSU.20-36-25	23	35.5	16	20	25	5	57
421477	CSU.25-36-30	23	35.5	16	25	30	5	66
421479	CSU.30-36-35	23	35.5	16	30	35	5	75

Latches

1544



05/2023

Models all rights reserved in accordance with the law. Always mention the source when reproducing our drawings and photos.