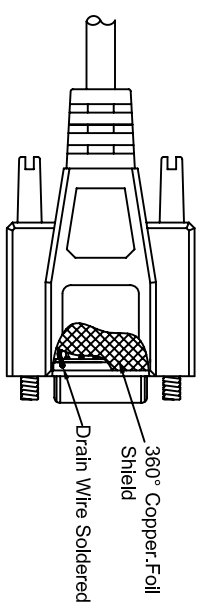
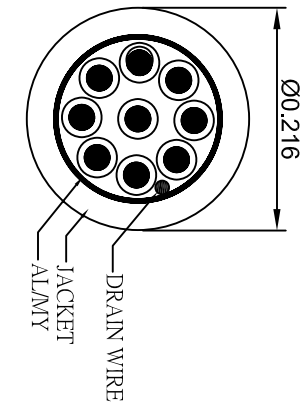
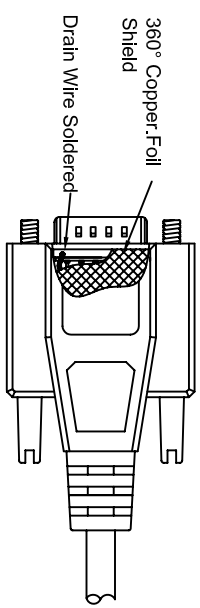
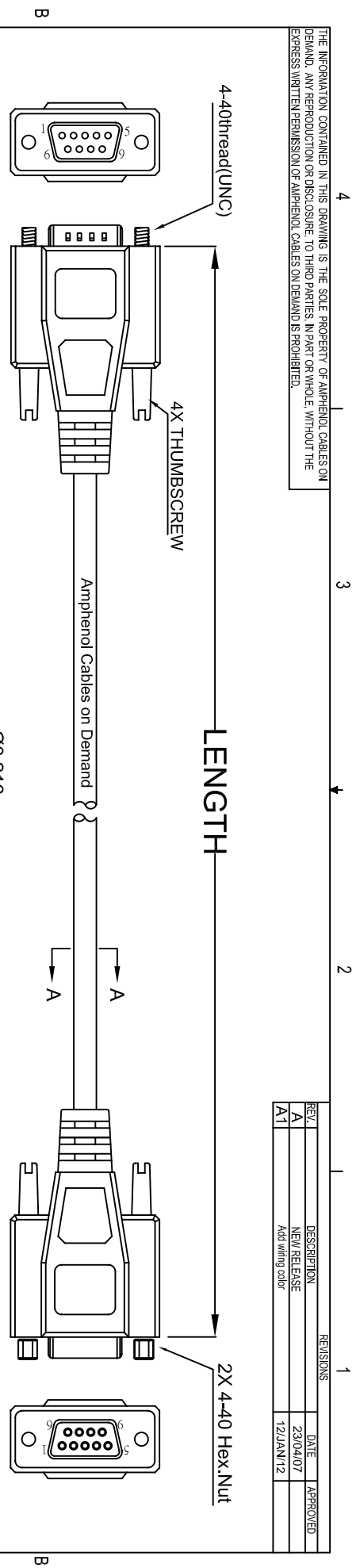


THE INFORMATION CONTAINED IN THIS DRAWING IS THE SOLE PROPERTY OF AMPHENOL CABLES ON DEMAND. ANY REPRODUCTION OR DISCLOSURE TO THIRD PARTIES, IN PART OR WHOLE, WITHOUT THE EXPRESS WRITTEN PERMISSION OF AMPHENOL CABLES ON DEMAND IS PROHIBITED.

| REV. | DESCRIPTION | DATE | APPROVED |
|------|------------------|-----------|----------|
| A | NEW RELEASE | 23/04/07 | |
| A1 | Add wiring color | 12/JAN/12 | |



LENGTH & P/N Table

| LENGTH | P/N | Cable Color |
|---------------|---------------------|-------------|
| 2.5FT ±1 inch | CS-DSDMDB09MF-002.5 | GRAY |
| 3FT ±2 inch | CS-DSDMDB09MF-003 | GRAY |
| 5FT ±2 inch | CS-DSDMDB09MF-005 | GRAY |
| 10FT ±3 inch | CS-DSDMDB09MF-010 | GRAY |
| 25FT ±4 inch | CS-DSDMDB09MF-025 | GRAY |

PIN OUT: 1 TO 1

| Male | Female | Color |
|--------|--------|------------|
| PIN1 | PIN1 | Black |
| PIN2 | PIN2 | Brown |
| PIN3 | PIN3 | Red |
| PIN4 | PIN4 | Orange |
| PIN5 | PIN5 | Yellow |
| PIN6 | PIN6 | Green |
| PIN7 | PIN7 | Blue |
| PIN8 | PIN8 | Purple |
| PIN9 | PIN9 | Gray |
| SHIELD | SHIELD | Drain Wire |



UNLESS OTHERWISE SPECIFIED DIMENSIONS ARE IN INCHES TOLERANCES ARE:

| DECIMALS | ± X | ANGLES | ± X° |
|----------|-------|--------|------|
| X | ±.X | | |
| XX | ±.XX | | |
| XXX | ±.XXX | | |

THIRD ANGLE PROJECTION

Amphenol Cables on Demand
20 VALLEY ST. ENDICOTT, NY 13760



| E&R NO. | | APPROVALS | | DATE | |
|----------|----|-------------|--|------|--|
| DRAWN | LF | 12/JAN/2012 | | | |
| CHECKED | BA | 12/JAN/2012 | | | |
| RESP ENG | | | | | |

Deluxe 9PIN D-Sub MF

| SIZE | DWG. NO. | REV. |
|------|-------------------|------|
| A | CS-DSDMDB09MF-XXX | A1 |

NOTES: UNLESS OTHERWISE SPECIFIED

4 3 2 1