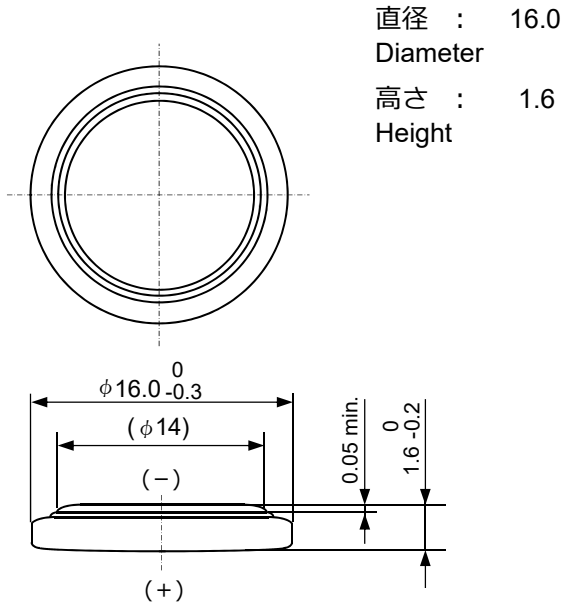


コイン形二酸化マンガンリチウム電池  
Coin manganese dioxide lithium batteries

# CR1616

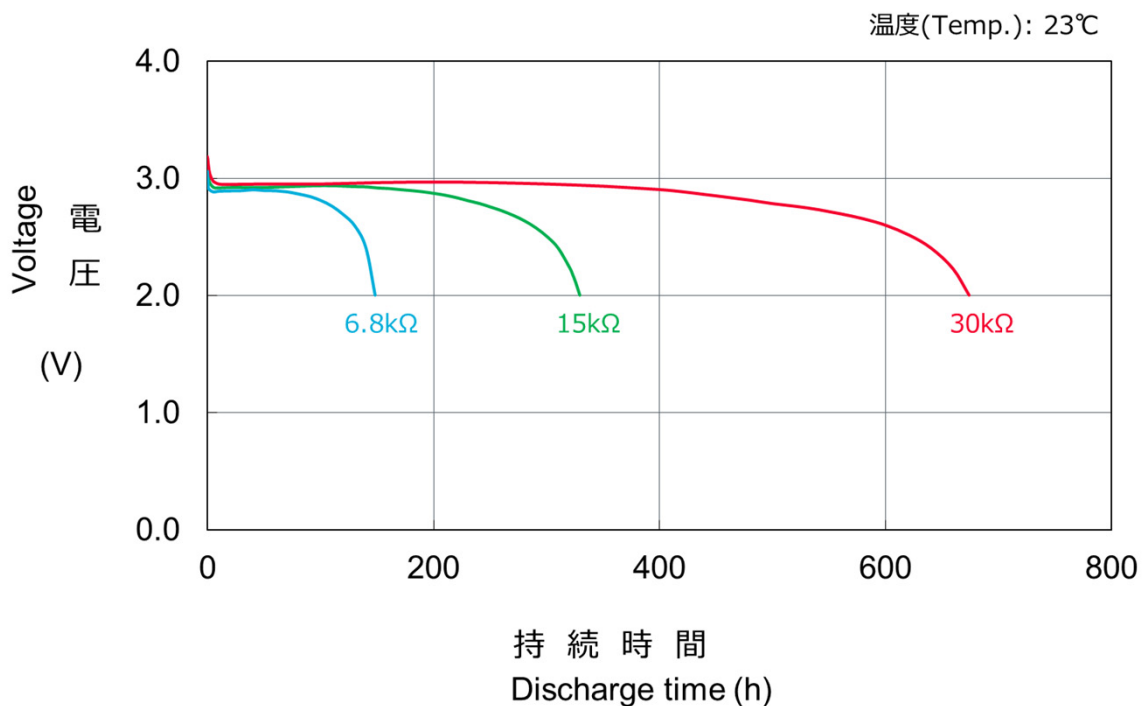
■外形寸法 Dimensions



(Unit : mm)

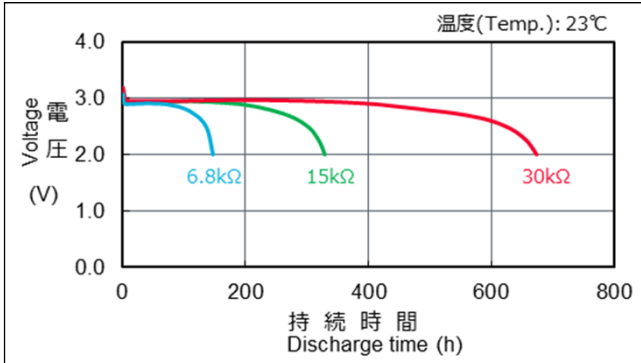
■定格 Specifications

|  |             |
|--|-------------|
| 公称電圧<br><b>Nominal Voltage</b>   | 3.0 V       |
| 公称容量 (終止電圧2.0V)<br><b>Nominal Capacity ( 2.0V cutoff)</b>  | 60 mAh      |
| 標準放電電流値<br><b>Standard Discharge Current</b>   | 0.1 mA      |
| 標準質量<br><b>Weight</b>  | 1.1 g       |
| 使用温度範囲<br><b>Operating Temperature</b>   | -30 ~ +70°C |
| UL認定合格部品 <b>UL Recognized components</b><br>● 許可番号 <b>Certification number</b> : MH12566<br>● User replaceable |             |



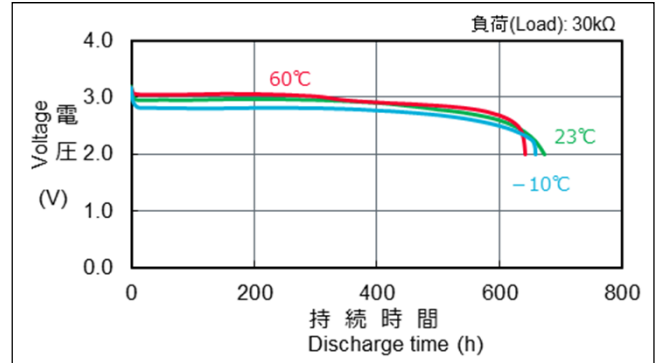
■ 放電負荷特性

Discharge Characteristics on Load  
Test Condition: constant discharge



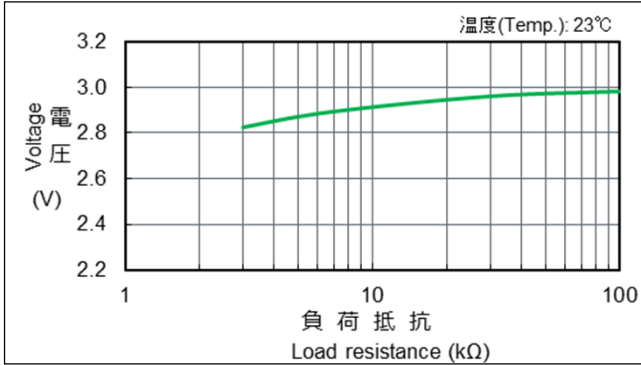
■ 放電温度特性

Discharge Characteristics on Temperature  
Test Condition: constant discharge



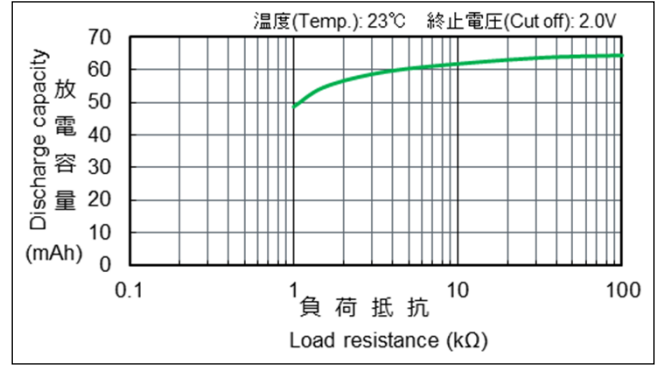
■ 放電負荷と作動電圧 (放電深度40%時の電圧)

Discharge Load vs. Operation Voltage  
(Discharge depth 40%)



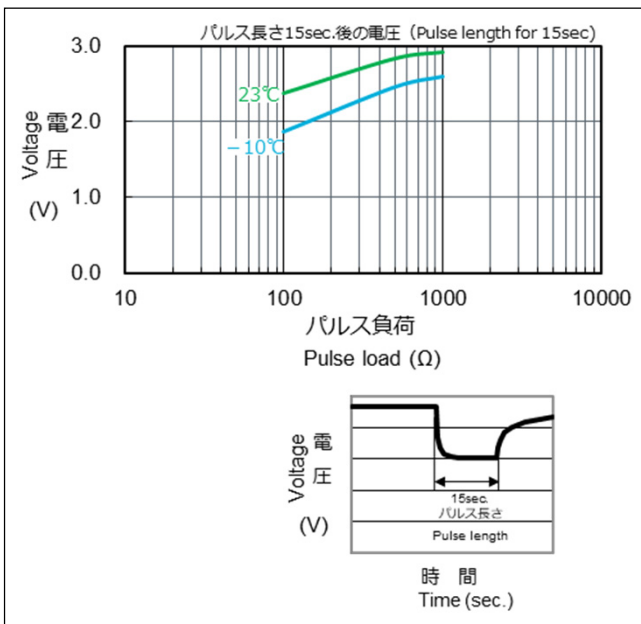
■ 放電負荷と電気容量

Discharge Load vs. Discharge Capacity



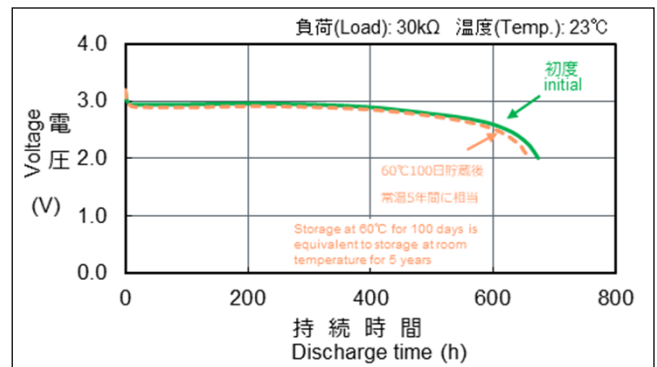
■ パルス放電特性 (放電深度40%時のパルス電圧)

Discharge Characteristics on Pulse Load  
(Discharge depth 40%)



■ 保存特性

Storage Characteristics  
Test Condition: constant discharge



\*記載のデータ及び数値は、参考値であり保証値ではありません。  
\*Data is not guaranteed, and is provided for reference purposes only.