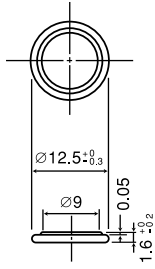


# CR1216

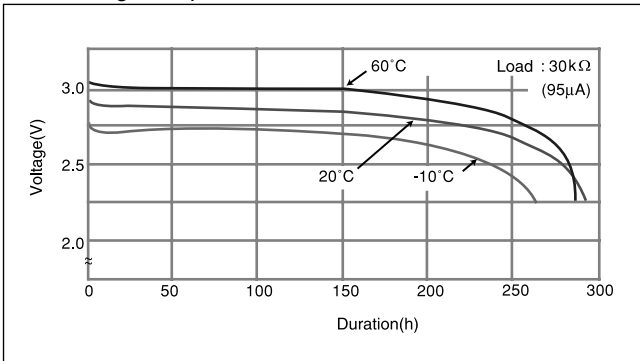
## ■ Dimensions(mm)



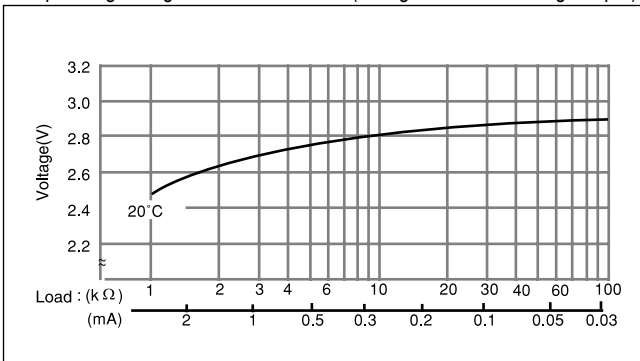
## ■ Specification

|                           |            |
|---------------------------|------------|
| Nominal voltage(V)        | 3          |
| Nominal capacity(mAh)     | 25         |
| Continuous drain(mA)      | 0.1        |
| Operating temperature(°C) | -30 to +60 |

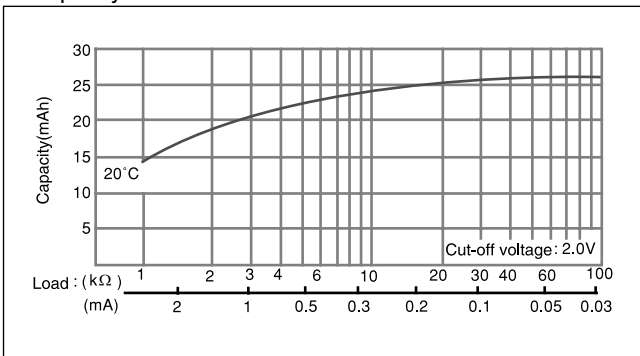
## ■ Discharge temperature characteristics



## ■ Operating voltage vs. load resistance(voltage at 50% discharge depth)

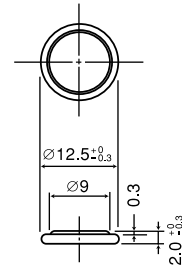


## ■ Capacity vs. load resistance



# CR1220

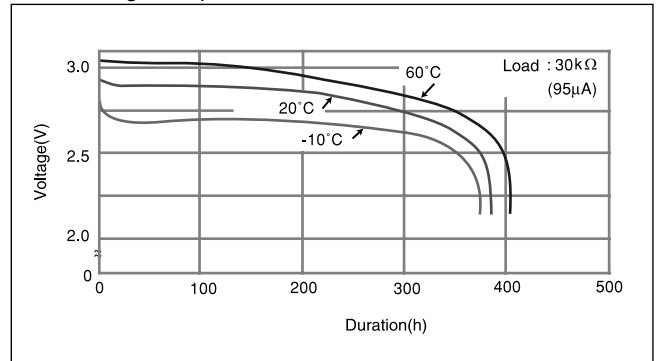
## ■ Dimensions(mm)



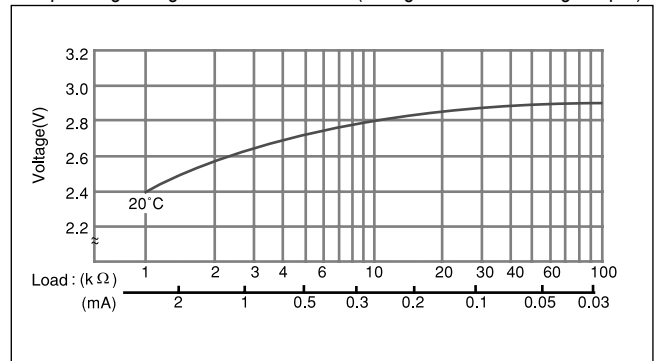
## ■ Specification

|                           |            |
|---------------------------|------------|
| Nominal voltage(V)        | 3          |
| Nominal capacity(mAh)     | 35         |
| Continuous drain(mA)      | 0.1        |
| Operating temperature(°C) | -30 to +60 |

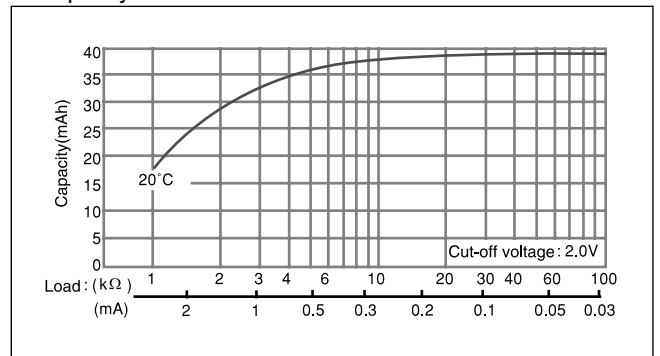
## ■ Discharge temperature characteristics



## ■ Operating voltage vs. load resistance(voltage at 50% discharge depth)



## ■ Capacity vs. load resistance



\* The data in this document are for descriptive purposes only and are not intended to make or imply any guarantee or warranty.