

**MATERIAL**

Glass-fibre reinforced polyamide-based (PA) technopolymer, black colour, certified self-extinguishing UL-94 V0.

**PACKING RING**

Silicone directly applied onto the back side of the stator head.

**WASHER WITH ELASTIC FIXING WINGS AND SELF-TAPPING SCREWS**

Stainless steel.

**KEY**

Polyamide based (PA) technopolymer.

**ROTATION**

90°.

**IP PROTECTION**

IP 65 protection class, according to EN 60529 (see page A-18).

**STANDARD EXECUTIONS**

- **CQT/A**: mark for two-wings key.
- **CQT/T**: mark for triangular key.

**MAXIMUM CONTINUOUS WORKING TEMPERATURE**

130°C.

**DISASSEMBLY TOOL (TO BE ORDERED SEPARATELY)**

Code 421550 ATTREZZO CQT.FM. in AISI 304 stainless steel.

**SPECIAL EXECUTIONS ON REQUEST**

- Closing levers in zinc-plated steel.
- Latches and keys supplied separately.

**ASSEMBLY INSTRUCTIONS**

The latch is inserted in the mounting hole of the door on the lever side (see picture) until the wings of the elastic washer snap in, ensuring complete fastening.

The latches are supplied with assembled lever for faster mounting. Where needed, the latch can be disassembled from the inside of the door by means of a disassembling tool (to be ordered separately).

**FEATURES**

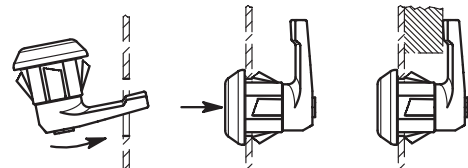
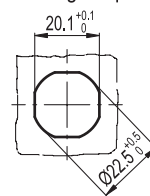
Quick assembly with steel plate thickness ranging from 1 to 2 mm latches.

**TECHNICAL DATA**

The "V0" certification in accordance with UL-94 V (Underwriters Laboratories) (see Technical data on page A-5) indicates that on a plastic test sample with specific shape and dimensions, in the vertical position, the flame is extinguished within 10 seconds, without generating incandescent drops.

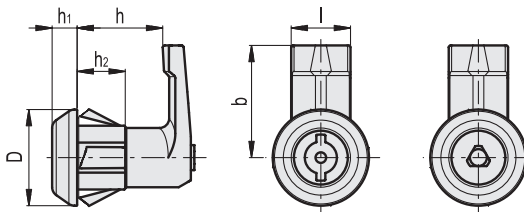


Drilling template



CQT/A

CQT/T



Conversion Table	
1 mm = 0.039 inch	
mm	inch
18	0.71
20	0.79
22	0.87
25	0.98
30	1.18

**CQT/A**

**CQT/T**

**METRIC**

Code	Description	Code	Description	D	l	b	h	h1	h2	⚖
421530	CQT/A-FM-35-18-AE-V0	421535	CQT/T-FM-35-18-AE-V0	30	18.5	35	18	8	15	19
421531	CQT/A-FM-35-20-AE-V0	421536	CQT/T-FM-35-20-AE-V0	30	18.5	35	20	8	15	20
421532	CQT/A-FM-35-22-AE-V0	421537	CQT/T-FM-35-22-AE-V0	30	18.5	35	22	8	15	21
421533	CQT/A-FM-35-25-AE-V0	421538	CQT/T-FM-35-25-AE-V0	30	18.5	35	25	8	15	22
421534	CQT/A-FM-35-30-AE-V0	421539	CQT/T-FM-35-30-AE-V0	30	18.5	35	30	8	15	24

