

COOL POWER TECHNOLOGIES

Eighth-Brick Isolated DC/DC Converter

Features

- Ultra-wide input voltage range: 18 – 72Vin
- Output: 12V at 10A, 120W max.
- High Efficiency – 92% Typical @ FL
- RoHS 3 Directive 2015/863/EU compliant
- No minimum load/capacitance required
- Low height - 0.465" (11.8mm) max.
- Baseplate optional 0.500" (12.7mm) tall
- Withstands 100 V input transients
- On-board input differential LC-filter
- Meets UL94, V-0 flammability rating
- Fixed-frequency operation
- Remote voltage sensing
- Industry standard 1/8th brick footprint
- Available in through-hole and SMT versions
- Full protection (OTP, OCP, OVP, UVLO – auto-restart)
- Remote ON/OFF - positive or negative enable logic options
- Output voltage trim range: $\pm 10\%$ (industry-standard trim equations)
- Weight: 0.79 oz (22.4 g) open frame, 1.38 oz (39.1 g) baseplate model
- Compliant to REACH (EC) No 1907/2006, 233 SVHC update
- Certified to UL 62638-1, EN/IEC 62638-1+A11, CSA C22.2 No. 62638-1
- Meets Class B conducted emissions per FCC and EN55032 when used with external filter (see EMC Compliance section below.)
- Lower profile - 0.4" (10.3mm) max height option available (-4), see Thermal Derating and Ordering Information sections below



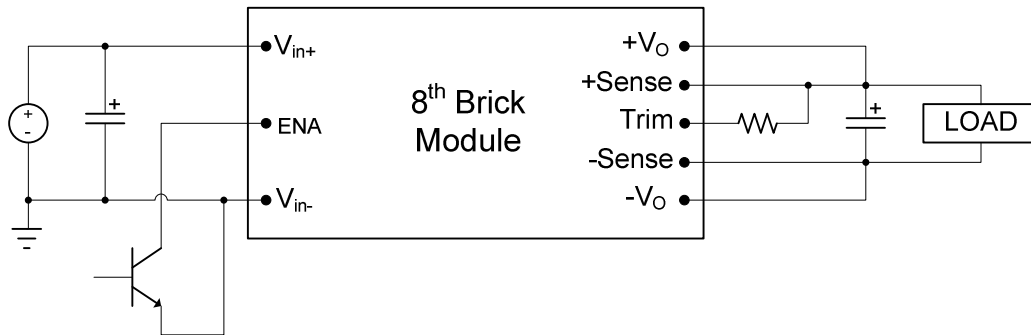
Description

The CPE10B36 “Cool Power Technologies” DC-DC converter is an open frame eighth-brick DC-DC converter that conforms to industry standard specifications. The converter operates over an input voltage range of 18 to 72 VDC, and provides a tightly regulated output voltage with an output current rating of 10 Amps. The output is fully isolated from the input and the converter meets Basic Insulation requirements. The standard feature set includes remote On/Off (positive or negative enable), input undervoltage lockout, output overvoltage protection, overcurrent and short circuit protections, output voltage trim, remote sense and overtemperature shutdown with hysteresis. The high efficiency of the CPE10B36 allows operation over a wide ambient temperature range with minimal derating (see Characteristic Curves section below.)

TABLE OF CONTENTS

SECTION	PAGE
FEATURES & DESCRIPTION	1
APPLICATION DIAGRAM	2
ELECTRICAL SPECIFICATIONS	3
CHARACTERISTIC PERFORMANCE CURVES	6
CHARACTERISTIC WAVEFORMS	7
APPLICATION NOTES	8
<ul style="list-style-type: none"> • RIPPLE MEASUREMENTS TEST SET-UP 	8
<ul style="list-style-type: none"> • OUTPUT VOLTAGE TRIM EQUATIONS 	9
<ul style="list-style-type: none"> • THERMAL DERATING 	10
<ul style="list-style-type: none"> • EMC COMPLIANCE 	12
MECHANICAL OUTLINE & PCB FOOTPRINT	13
ORDERING INFORMATION	15

APPLICATION DIAGRAM



ELECTRICAL SPECIFICATIONS

18–72Vin, 12V/10Aout

Conditions: $T_A = 25\text{ }^\circ\text{C}$, Airflow = 300 LFM, $V_{in} = 48\text{ VDC}$, $C_{in} = 100\text{ }\mu\text{F}$, unless otherwise specified.

Input Characteristics					
Parameter	Conditions	Min	Typ	Max	Unit
Operating Input Voltage Range		18	48	72	VDC
Input Under-Voltage Lock-out					
Turn-on Threshold		17.2	17.6	18.0	VDC
Turn-off Threshold		15.8	16.2	16.6	VDC
Input Voltage Transient	100ms			100	VDC
Maximum Input Current	$V_{IN} = 18\text{VDC}; I_{out} = 10\text{A}$			7.6	A
Input Standby Current	Converter Disabled		2	5	mA
Input No-Load Current	Converter Enabled		75	90	mA
Short Circuit Input Current	RMS		30		mA
Input Reflected Ripple Current	5Hz to 50MHz See Fig 13 for setup		15	25	$\text{mA}_{\text{PK-PK}}$
Input Voltage Ripple Rejection	120Hz		50		dB
Inrush Current	All	-	-	0.01	A^2/s
Output Characteristics					
Parameter	Conditions	Min	Typ	Max	Unit
Output Voltage Set point	Sense pins connected to output pins	11.82	12	12.18	VDC
Output Current		0		10	A
Output Current Limit Inception		11	13	17	A
Peak Short-Circuit Current	10m Ω Short			25	A
RMS Short-Circuit Current	10m Ω Short			2.7	A_{RMS}
External Load Capacitance		0		4700	μF
Output Ripple and Noise	20MHz Bandwidth 1 μF Ceramic + 10 μF Tantalum See Fig 14 for setup		80	150	$\text{mV}_{\text{PK-PK}}$
Output Regulation					
Line:			± 5	± 10	mV
Load:			± 5	± 10	mV
Overall Output Regulation:	Over line, load & temp.	11.64		12.36	V



ELECTRICAL SPECIFICATIONS (continued)

18–72Vin, 12V/10Aout

Conditions: $T_A = 25\text{ }^\circ\text{C}$, Airflow = 300 LFM, $V_{in} = 48\text{ VDC}$, $C_{in} = 100\text{ }\mu\text{F}$, unless otherwise specified.

Absolute Maximum Ratings					
Parameter	Conditions	Min	Typ	Max	Unit
Input Voltage	Continuous Operation	0		75	VDC
Operating Ambient Temperature	w/derating	-40		+85	$^\circ\text{C}$
Operating Temperature - T_{ref} , see Thermal Derating section	Open Frame	-40		+123	$^\circ\text{C}$
	Baseplate Option	-40		+115	$^\circ\text{C}$
Storage Temperature		-55		+125	$^\circ\text{C}$
Feature Characteristics					
Parameter	Conditions	Min	Typ	Max	Unit
Switching Frequency			350		kHz
Output Voltage Trim Range ¹		-10		+10	%
Remote Sense Compensation ¹				+10	%
Output Over-voltage Protection	Non-latching	115	125	140	%
Over-temperature Protection	Avg. PCB temp, non-latching		135		$^\circ\text{C}$
Peak Backdrive Output Current during startup into prebiased output	Sinking current from external voltage source equal to $V_{OUT} - 0.6\text{V}$ and connected to the output via 1Ω resistor. $C_{OUT}=220\mu\text{F}$, Aluminum		500		mA
Backdrive Output Current in OFF state	Converter disabled		0	5	mA
Enable to Output Turn-ON Time	$V_{OUT} = 0.9 \times V_{OUT_NOM}$		20		ms
Output Enable ON/OFF	Negative Enable	Converter ON	-0.5	0.8	VDC
		Converter OFF	2.4	20	VDC
	Positive Enable	Converter ON	2.4	20	VDC
		Converter OFF	-0.5	0.8	VDC
Enable Pin Current Source/Sink			0.25	1	mA
Output Voltage Overshoot @ Startup			0	2	%Vo
Auto-Restart Period	(OVP, OCP)		100		ms



ELECTRICAL SPECIFICATIONS (continued)

18–72Vin, 12V/10Aout

Conditions: Ta = 25 °C, Airflow = 300 LFM, Vin = 48 VDC, Cin=100 µF, unless otherwise specified.

Efficiency					
Parameter	Conditions	Min	Typ	Max	Unit
Full Load	Vin = 24Vin	91.5	92.5		%
	Vin = 48Vin	91.5	92		%
50% Load	Vin = 24Vin	92	93		%
	Vin = 48Vin	90	91		%
Dynamic Response					
Parameter	Conditions	Min	Typ	Max	Unit
Load Change 50%-75% or 25% to 50% of Iout Max, di/dt = 0.1 A/µs	Co = 1 µF ceramic + 10 µF tantalum		100	200	mV
Settling Time to 1% of Vout			50		µs
Load Change 50%-100% of Iout Max, di/dt = 1 A/µs	Co = 1 µF ceramic + 10 µF tantalum		400	600	mV
Settling Time to 1% of Vout			50		µs
Isolation Specifications					
Isolation Capacitance			1000		pF
Isolation Resistance		10			MΩ
Isolation Voltage	Input to Output	2250			V _{DC}
	Input to Baseplate	1500			V _{DC}
	Output to Baseplate	1000			V _{DC}
Reliability					
Per Telcordia SR-332, Issue 2: Method I, Case 3 (Io=80% of Io_max, TA=40°C, airflow = 200 lfm, 90% confidence)	MTFB		2,980,488		Hours
	FITs (failures in 10 ⁹ hours)		336		/10 ⁹ Hours

Notes:

- 1) Combination of remote sense + trim up not to exceed 10% of V_{onom}.



CHARACTERISTIC CURVES:

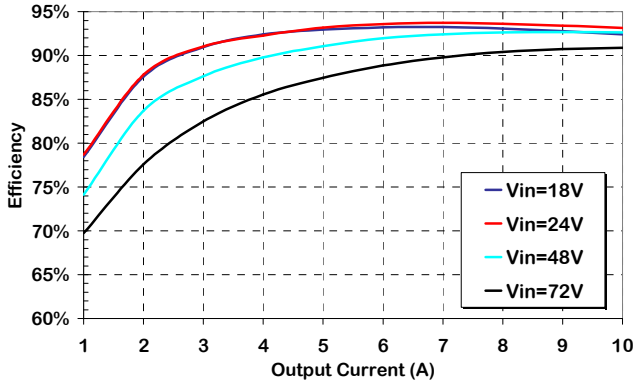


Figure 1. Efficiency vs Output Current, 300lfm airflow, 25°C ambient.

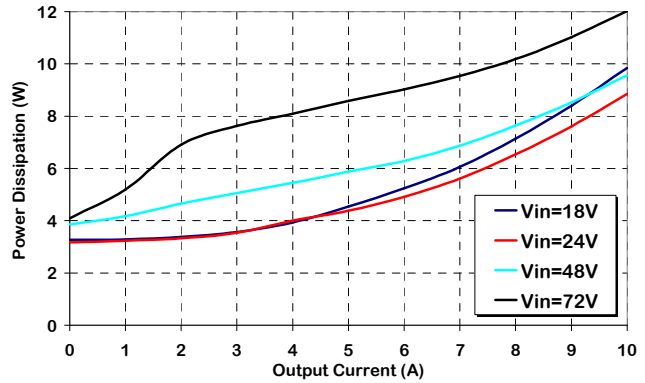


Figure 2. Power Dissipation vs. Load Current, 300lfm airflow, 25°C ambient.

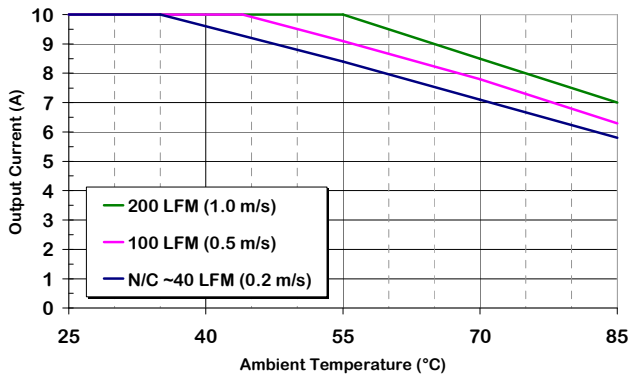


Figure 3. Output Current Derating vs Ambient Temperature & Airflow (air flowing from pin 3 to pin 1, Vin = 48 V, without baseplate)

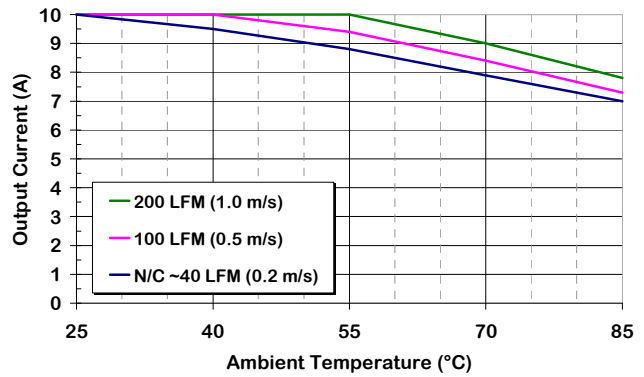


Figure 4. Output Current Derating vs Ambient Temperature & Airflow (air flowing from pin 3 to pin 1, Vin = 24 V, without baseplate)

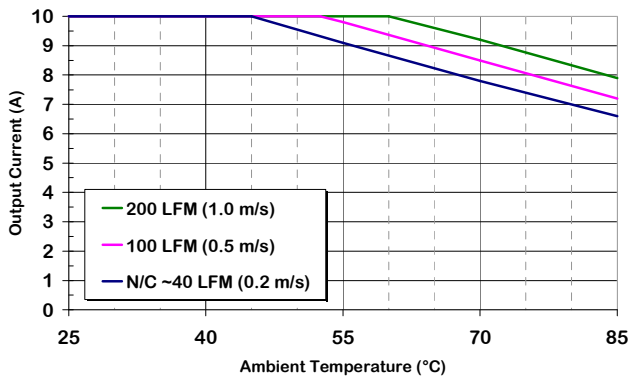


Figure 5. Output Current Derating vs Ambient Temperature & Airflow (air flowing from pin 3 to with pin 1, Vin = 48 V, with baseplate)

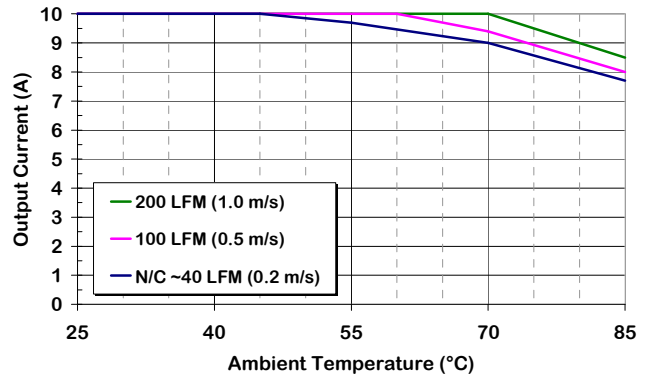


Figure 6. Output Current Derating vs Ambient Temperature & Airflow (air flowing from pin 3 to with pin 1, Vin = 24 V, with baseplate)

CHARACTERISTIC WAVEFORMS:

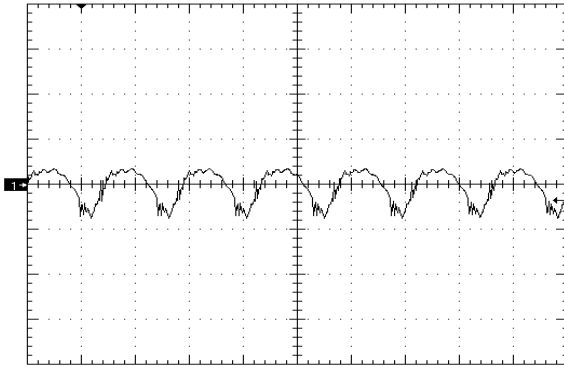


Figure 7. Output Voltage Ripple (50mV/div), time scale – 2uS/div. Vin=Vin_nom, full resistive.

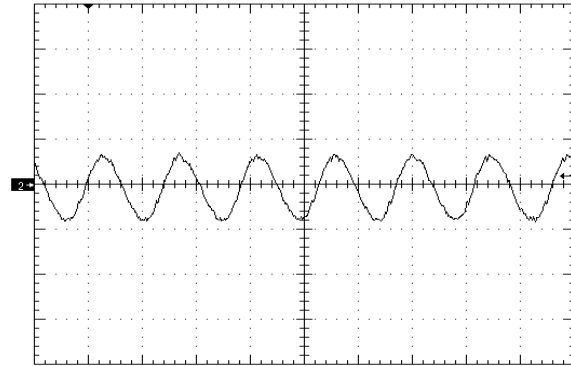


Figure 8. Input Reflected Ripple Current (10mA/div) time scale - 2uS/div. Vin=Vin_nom, full resistive.

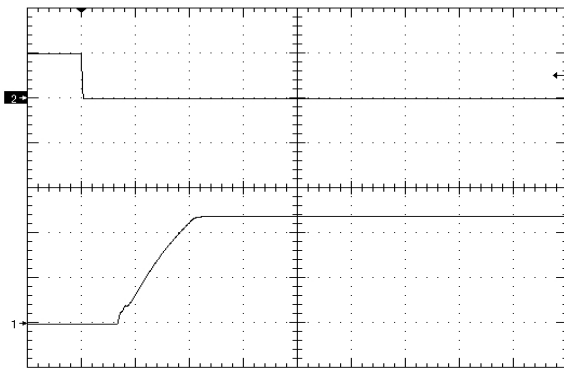


Figure 9. Startup Waveform via Enable Pin, time scale 10mS/div. Vin=Vin_nom, full resistive load (negative enable.) Ch1,Ch2=5V/div

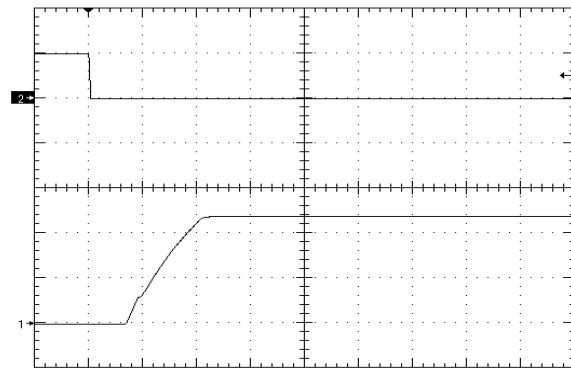


Figure 10. Startup Waveform via Enable Pin, time scale 10mS/div. Vin=Vin_nom, full resistive load + 2200uF (negative enable.) Ch1,Ch2=5V/div

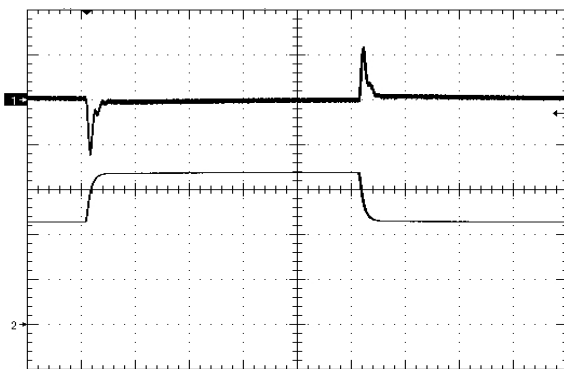


Figure 11. Load Transient Response (100mV/div), di/dt=0.1A/uS, 50% - 75% - 50% of full load, time scale: 200uS/div.

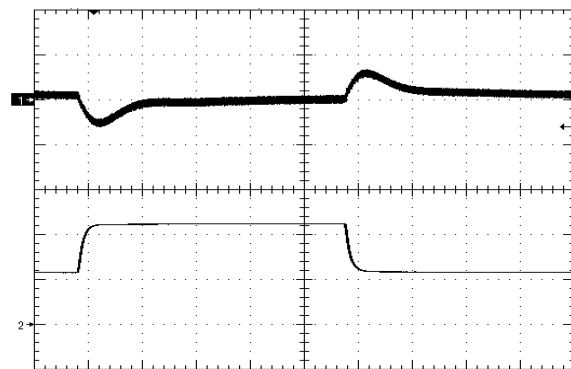
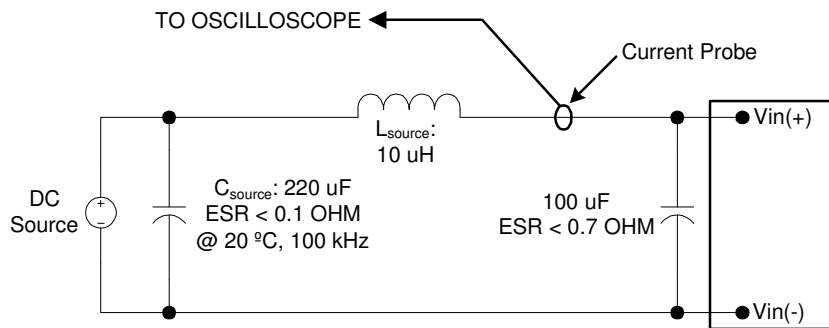


Figure 12. Load Transient Response (50mV/div), di/dt=0.1A/uS, 25% - 50% - 25% of full load, +2000uF Oscon, time scale: 200uS/div

Application Notes

Input Voltage Reflected Ripple Measurement

- INPUT REFLECTED RIPPLE TEST SETUP:

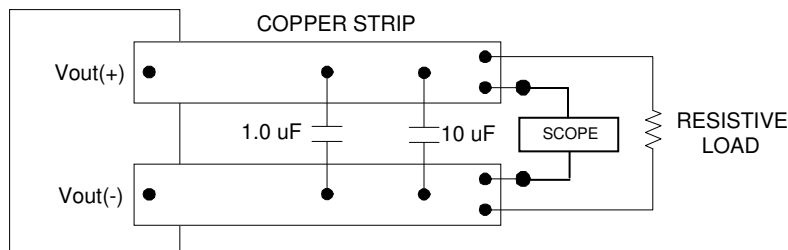


Note: Measure input reflected-ripple current with a simulated source inductance (L_{test}) of 10 μ H. Capacitor C_s offsets possible source impedance.

Figure 13. Input Reflected-ripple Current Test Setup.

Output Voltage Ripple Measurement

- OUTPUT RIPPLE TEST SETUP:



Note: Use a 1 μ F X7R ceramic capacitor and a 10 μ F tantalum capacitor. Scope measurement should be made using a BNC socket. Position the load 3 in. [76mm] from module.

Figure 14. Peak-to-Peak Output Noise Measurement Test Setup.

Application Notes (cont)

Output Voltage Trim

Output voltage adjustment is accomplished by connecting an external resistor between the Trim Pin and either the +Sense or -Sense pins.

- TRIM UP EQUATION:**

$$R_{trim_up} = \left[\frac{5.1 \times V_{O_nom} \times (100 + \Delta\%)}{1.225 \times \Delta\%} - \frac{510}{\Delta\%} - 10.2 \right] \times k\Omega$$

Where R_{trim_up} is the resistance value in k-ohms and $\Delta\%$ is the percent change in the output voltage. E.g. to

trim the output up 10%, $R_{trim_up} = \left[\frac{5.1 \times 12 \times (100 + 10)}{1.225 \times 10} - \frac{510}{10} - 10.2 \right] \times k\Omega$ or $R_{trim_up} = 488k\Omega$.

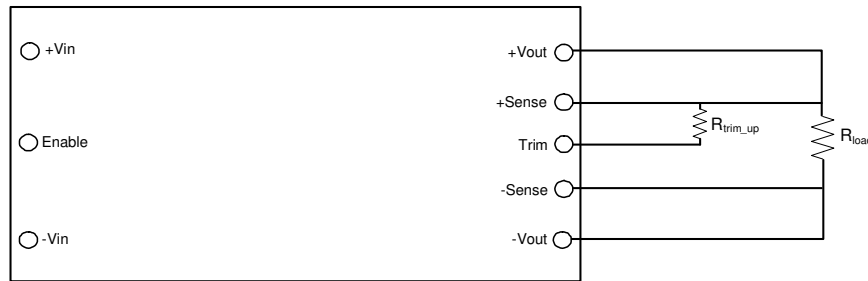


Figure 15. Trim UP circuit configuration

- TRIM-DOWN EQUATION:**

$$R_{trim_down} = \left(\frac{510}{\Delta\%} - 10.2 \right) \times k\Omega$$

Where R_{trim_down} is the resistance value in k ohms and $\Delta\%$ is the percent change in the output voltage.

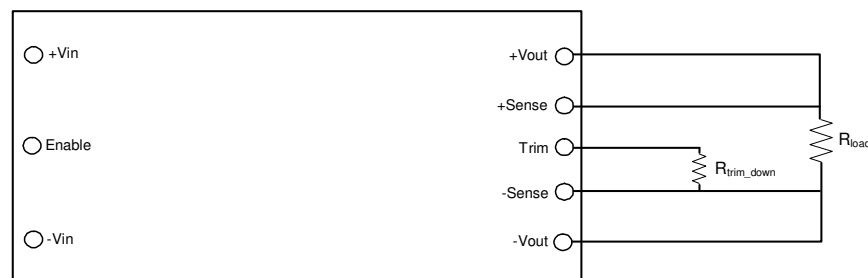


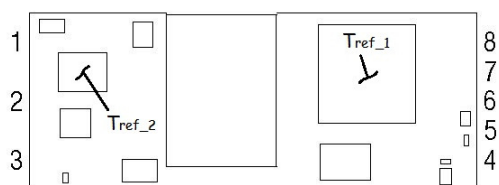
Figure 16. Trim DOWN circuit configuration



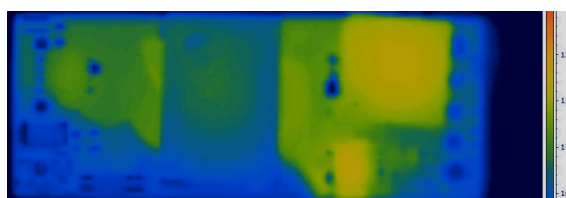
Application Notes (cont)

Thermal Derating

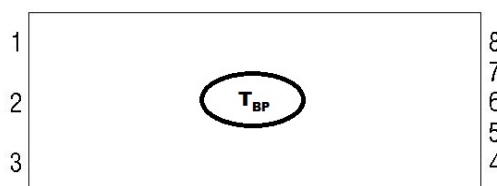
- It is preferable that the DC-DC module have an unobstructed flow of air across it for best thermal performance. Components taller than ~ 2mm in front of the module can deflect airflow and possibly create hotspots.
- Significant cooling is achieved through conductive flow from the modules I/O pins to the host PCB. Sufficiently large traces connecting the dc-dc converter to the source and load will help ensure thermal derating performance will meet or exceed the derating curves published in this datasheet.
- If the module is expected to be operated near the load limits defined in the derating curves, in-system verification of module derating performance should be performed to ensure long-term system reliability. Peak temperatures are to be measured using infrared thermography or by gluing a fine gauge (AWG #40) thermocouple at the T_{ref} location(s) shown below. T_{ref_2} should be monitored for input voltages below 30 Vin, T_{ref_1} for input voltages > 30 Vin. Temperatures at the specified location(s) are not to exceed 123°C in order to meet derating guideline. For baseplate models, T_{BP} should not exceed 115°C.



Open Frame Measurement Points



Thermal Image of module @ 48Vin, 200LFM & 55C



Baseplate Measurement Point

- Note that the lower profile -4 option lowers the derating curves (See Characteristic Curves section) by 1 Amp at 48Vin and 0.5 Amp at 24Vin at all airflows & temperatures.

Input Undervoltage Lockout

- The converter is disabled until the input voltage has exceeded the UVLO turn-on threshold. Once the input voltage exceeds this level (see Input Under-Voltage Lock-out in Electrical Specifications table) the module will commence soft-start. Hysteresis of 1-2 volts minimizes the likelihood of pulling the input voltage below the turn-off threshold during startup which could create an undesirable on/off cycling condition. The converter will continue to operate until the input voltage subsequently falls below the UVLO turn-off threshold.



Application Notes (cont)

Enable Pin Function

- The module has a remote enable function that allows it to be turned on or off remotely. The Enable pin is referenced to the negative input pin (-Vin) of the converter. Modules can be ordered with either negative or positive enable.
- The negative enable option the module will not turn on unless the enable pin is connected to -Vin. The positive enable option allows the converter to turn on as soon as voltage sufficient to exceed the UVLO of the converter has been applied to the input terminals. In this case the module is turned off by connecting the Enable pin to -Vin. On/off thresholds are located in the Electrical Specifications table.

Output Overvoltage Protection

- The module has an independent feedback loop that will disable the output of the converter if a voltage greater than about 125% of the nominal set point is detected. When this threshold is reached, the converter will shut down and remain off for the amount of time specified by the Auto-Restart Period. The converter will attempt a restart once this period of time has elapsed.

Output Overtemperature Protection

- To provide protection under certain fault conditions, the unit is equipped with a thermal shutdown circuit. The unit will shutdown if the average PCB temperature exceeds approx. 135°C, but the thermal shutdown is not intended as a guarantee that the unit will survive temperatures beyond its rating. The module will automatically restart once it has cooled below the shutdown temperature minus hysteresis (typically 20 deg C.)

SMT Version Layout Considerations (if applicable)

- Copper traces with sufficient cross-section must be provided for all output & input pins. SMT pads tied to internal power/ground planes must have multiple vias around each SMT pad to couple expected current loads from module pins into internal traces/planes. One 0.024" (0.6mm) diameter via for each 4A of expected source or load current must be provided as close to the termination as possible, preferably in the direction of current flow from SMT pad to load. Vias must be at least 0.024" (0.6 mm) away from the SMT pad to prevent solder from flowing into the vias.
- SMT pads on the host card are to be 0.080" (2.03 mm) diameter. Solder paste screen opening should be 0.075" (1.9 mm) diameter and the screen should be 0.006" (0.15 mm) thick (other thicknesses are possible; 0.006" provides a good compromise between solder volume and coplanarity compensation.)

Paralleling Converters

- Modules may be paralleled but it is recommended that the total power draw not exceed the output power rating of a single module. External sharing controllers are recommended for reliability and to ensure equal distribution of the load to the converters. In lower current applications, ORing diodes can be used to prevent converter interactions and improve current sharing.



Application Notes (cont)

EMC Compliance

To meet Class B compliance for EN55032 (CISPR 32) or FCC part 15 sub part j, the following input filter is required:

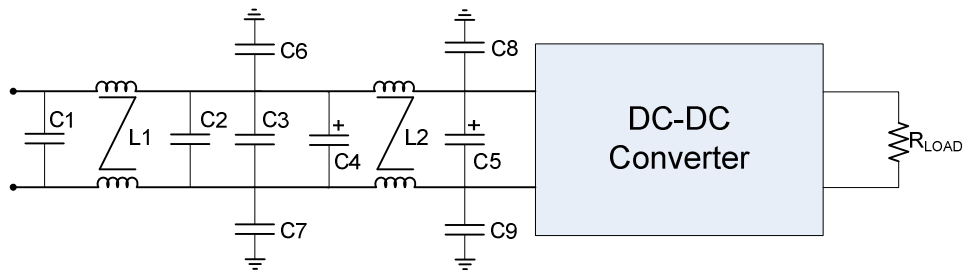


Figure 17. EMI Filter

L1, L2 =	0.59 mH Common Mode Inductor (Pulse P0353)
C1, C2, C3 =	2.2uF ceramic
C4 =	Not used
C5 =	100uF electrolytic
C6, C7 =	8.2nF (@2kV if output is ref. to gnd.)
C8, C9 =	8.2nF (@2kV if output is ref. to gnd.)

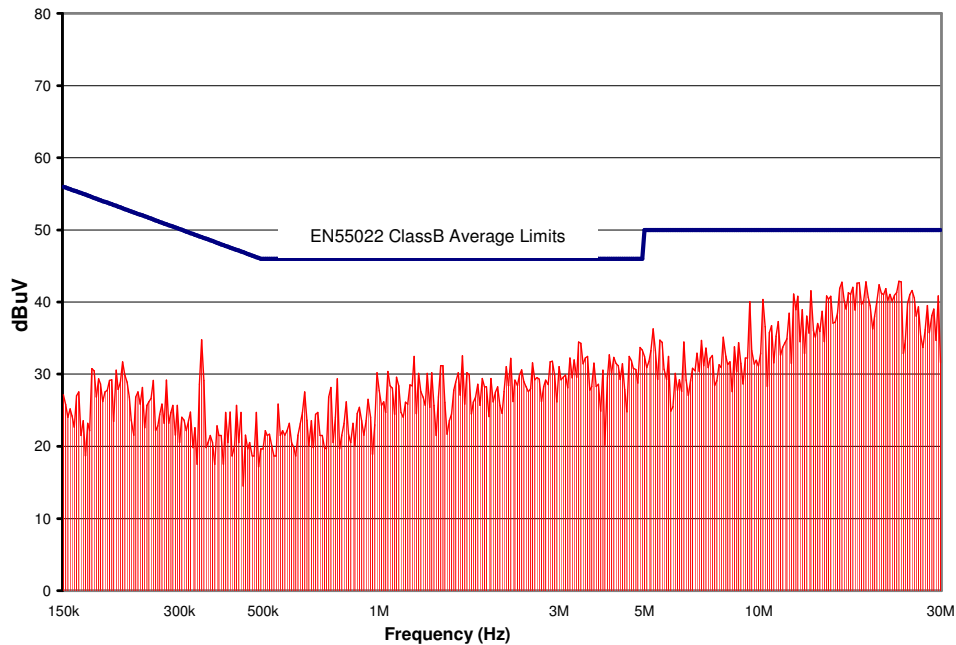
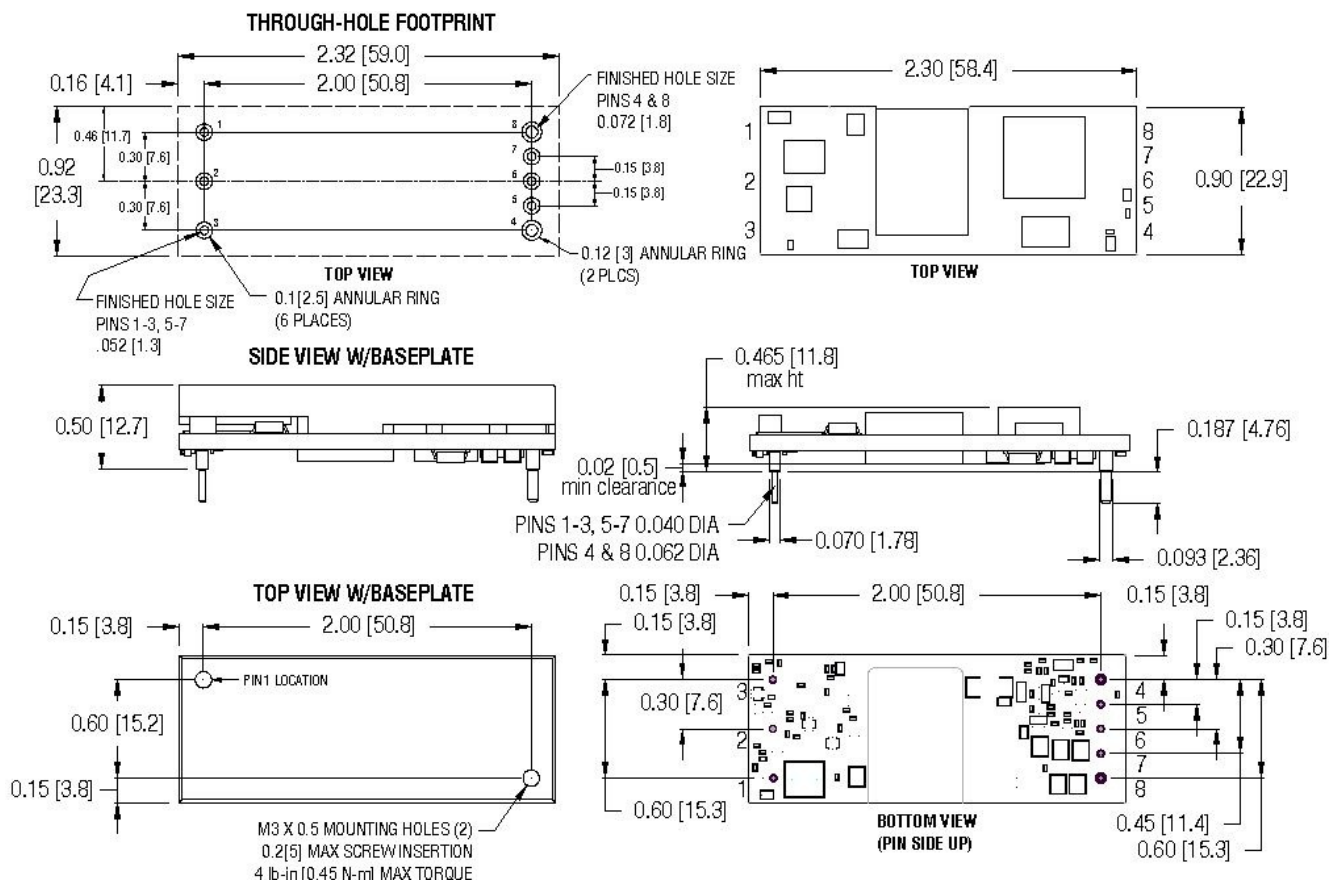


Figure 18. CPE10B36 Conducted Emissions using above specified input filter, Vin = 48V, Full Resistive Load

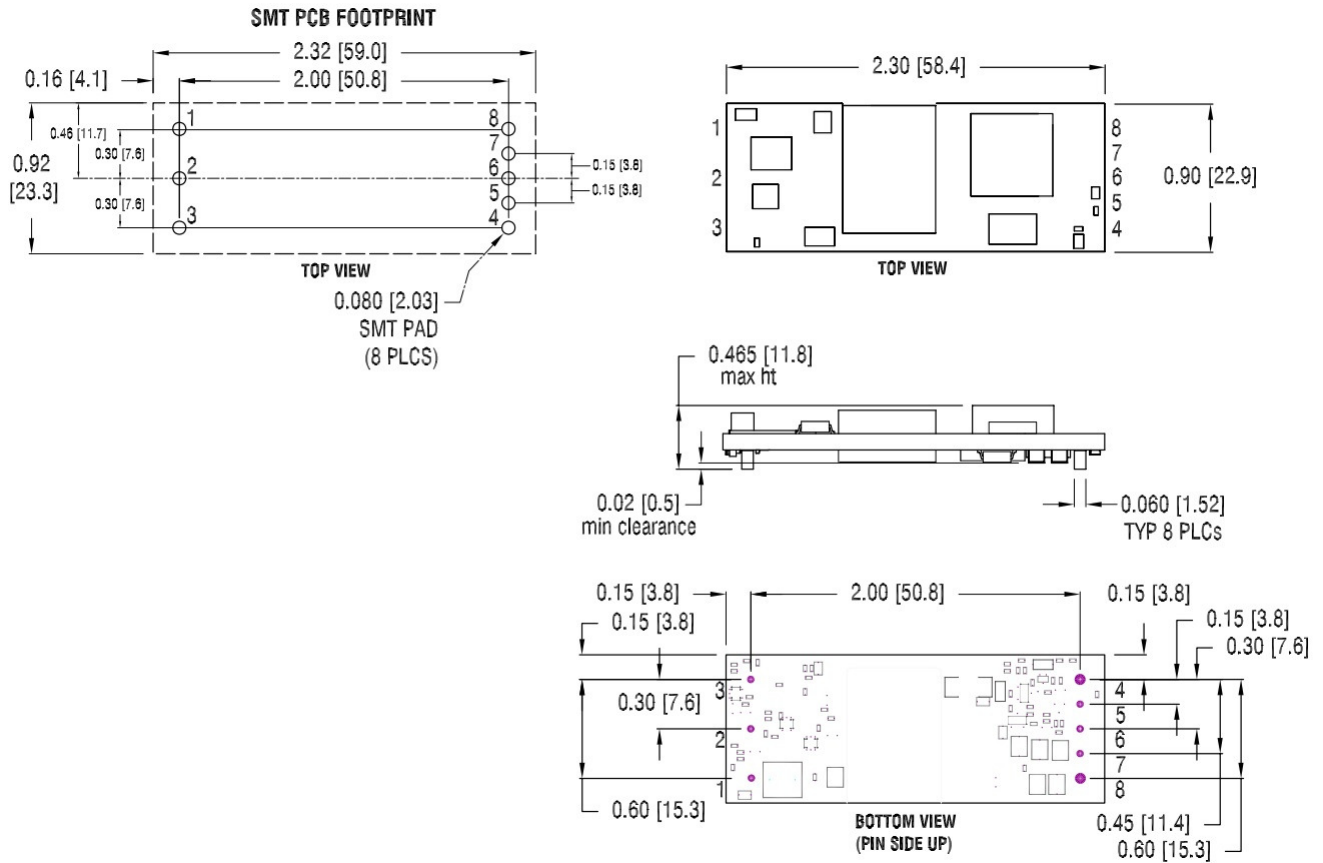
MODULE PIN ASSIGNMENT:

PIN #	DESIGNATION	NOTES
1	V _{IN} (+)	1) All dimensions in inches [mm] Tolerances: .xx ± 0.02 [.x ± .5] .xxx ± 0.010 [.xx ± .25] 2) Input, on/off control and sense/trim pins are Ø 0.040" [1.02] with Ø 0.070" [1.77] standoff shoulders. 3) Output pins are Ø 1.57 mm (0.062") with Ø 0.093" [2.36] shoulders (note, shoulder sits .008" above mounting surface) 4) All pins are gold plated with nickel under plating. 5) Weight: 22.4 g (0.79 oz.) open frame 39.1 g (1.38 oz.) baseplate model 6) Workmanship: Meet or exceeds IPC-A-610 Class II
2	On/Off	
3	V _{IN} (-)	
4	V _{OUT} (-)	
5	Sense (-)	
6	Trim	
7	Sense (+)	
8	V _{OUT} (+)	

MECHANICAL OUTLINE through-hole:



MECHANICAL OUTLINE SMT:



ORDERING INFORMATION:						
Product Identifier	Output Current	Output Voltage	Input Voltage	Enable logic option	Additional features	
CPE	10	B	36	N or P	S or B ¹	4 ²
“Cool Power Eighth”	10A	12V	18 – 72V	N = Negative P = Positive	S = Surface Mount B = Baseplate Option	0.4” (10.3mm) max height

1. Unit cannot be ordered with both baseplate and surface mount options
2. Only non-baseplate versions can be ordered with -4 option; e.g. CPE10B36N4 or CPE10B36NS4
Also see thermal derating section for info on reduced thermal derating w/lower profile

Rev 1.12, 9-May-23

