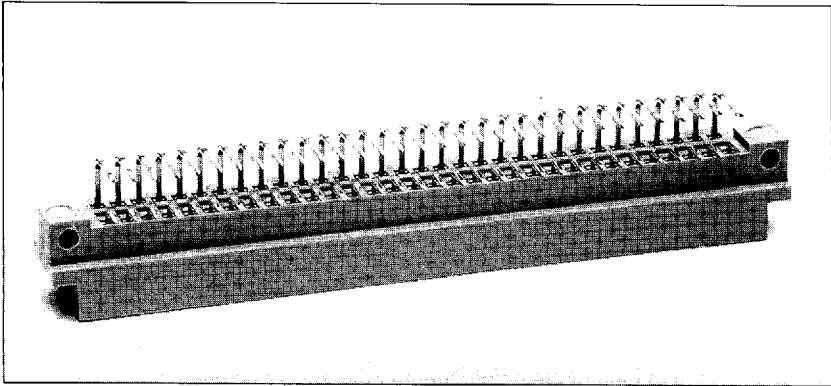


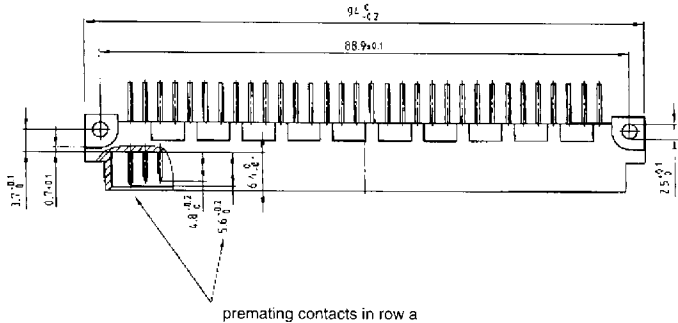
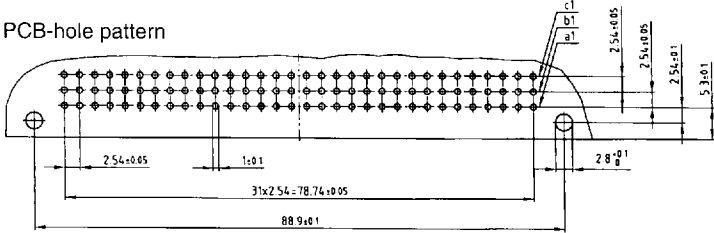
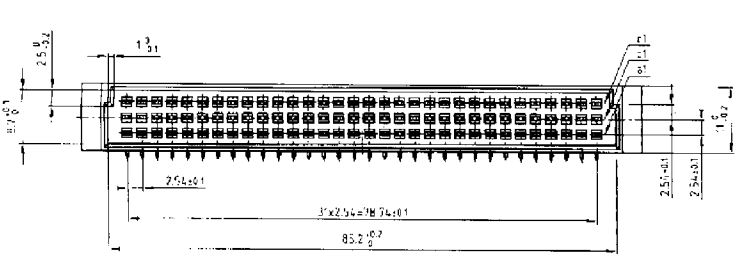
DIN 41612 • VG 95 324
Type C

9017935 0000175 863

CONEC®

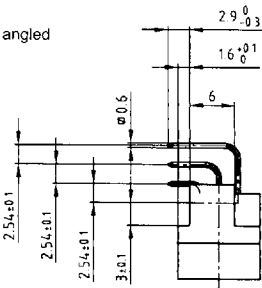


Male connector
– Contact spacing
2.54 and 5.08 mm –

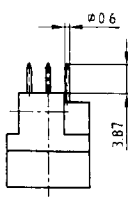


premating contacts in row a

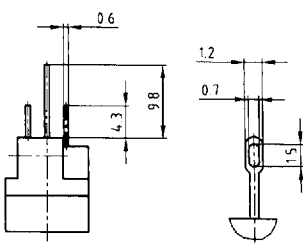
Kinds of contacts



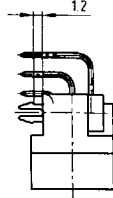
Solder pin



Solder lug



angled with clip

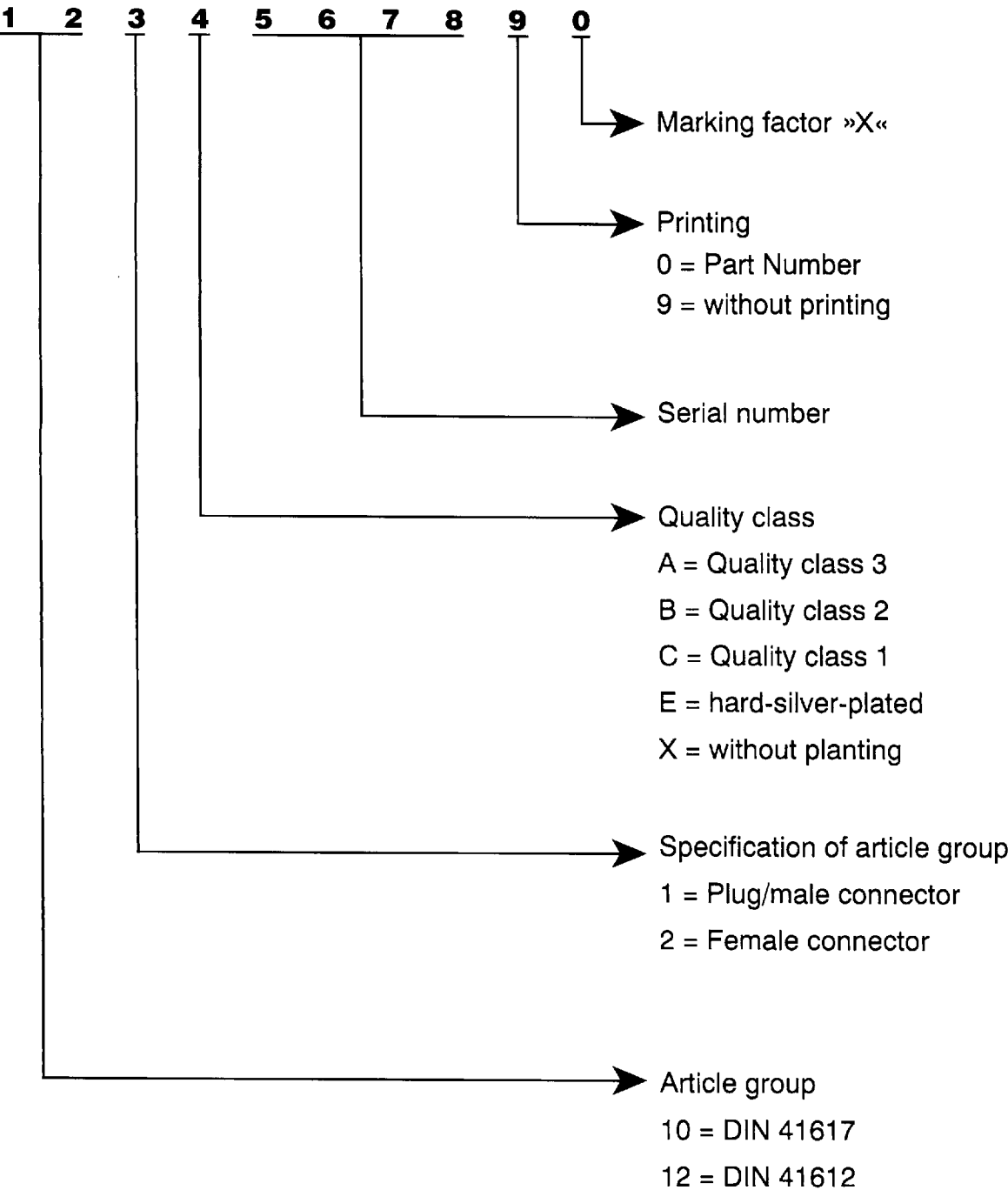


Part numbers

No. of Pos.	Version	Male connector – Contact spacing 2.54 and 5.08 mm			
		angled	Solder pin	Solder lug	angled with clip
32		C 32 M 3 A a 121 A 10109 X	C 32 M 3 P a 121 A 10159 X	C 32 M 3 L a 121 A 10209 X	C 32 M 3 A C a 121 A 20879 X
32		C 32 M 3 A a + c 121 A 10119 X	C 32 M 3 P a + c 121 A 10169 X	C 32 M 3 L a + c 121 A 10219 X	C 32 M 3 A C a + c 121 A 20889 X
64		C 64 M 3 A a + b 121 A 10129 X	C 64 M 3 P a + b 121 A 10179 X	C 64 M 3 L a + b 121 A 10229 X	C 64 M 3 A C a + b 121 A 20899 X
64		C 64 M 3 A a + c 121 A 10139 X	C 64 M 3 P a + c 121 A 10189 X	C 64 M 3 L a + c 121 A 10239 X	C 64 M 3 A C a + c 121 A 20909 X
96		C 96 M 3 A a + b + c 121 A 10149 X	C 96 M 3 P a + b + c 121 A 10199 X	C 96 M 3 L a + b + c 121 A 10249 X	C 96 M 3 A C a + b + c 121 A 20919 X

Premating contacts available in row a + c. Please complete part number by v 1,2...16.

Part Number



Order example

Male connector type C 64 pos. angled solder pin without printing			
Quality class		Part Number	
3		C 64 M 3 A a + c	121 A 10139 X
2		C 64 M 2 A a + c	121 B 10139 X
1		C 64 M 1 A a + c	121 C 10139 X

Technical Data		DIN 41617	DIN 41617/ 41612	Type B	Type B/2	Type C	Type C/2	Type M
Initial contact resistance		≤ 15 mΩ	≤ 10 mΩ	≤ 20 mΩ	≤ 20 mΩ	≤ 20 mΩ	≤ 20 mΩ	≤ 20 mΩ
Initial insulation resistance	QUAL. CL 1	≥ 10 ¹² Ω	≥ 10 ¹¹ Ω	≥ 10 ¹² Ω	≥ 10 ¹² Ω	≥ 10 ¹² Ω	≥ 10 ¹² Ω	≥ 10 ¹² Ω
	QUAL. CL 2	≥ 10 ¹¹ Ω		≥ 10 ¹² Ω	≥ 10 ¹² Ω	≥ 10 ¹² Ω	≥ 10 ¹² Ω	≥ 10 ¹² Ω
	QUAL. CL 3	≥ 10 ¹⁰ Ω		≥ 10 ¹¹ Ω	≥ 10 ¹¹ Ω	≥ 10 ¹¹ Ω	≥ 10 ¹¹ Ω	≥ 10 ¹¹ Ω
Clearance distance	Contact/ground	≥ 1 mm	≥ 1,2 mm					
	Contact/contact	≥ 0,5 mm		≥ 1,2 mm	≥ 1,2 mm	≥ 1,2 mm	≥ 1,2 mm	≥ 1,2 mm
Creepage distance	Contact/ground	≥ 1 mm	≥ 1,2 mm					
	Contact/contact	≥ 1,0 mm		≥ 1,2 mm	≥ 1,2 mm	≥ 1,2 mm	≥ 1,2 mm	≥ 1,2 mm
Test voltage V r.m.s.	Contact/ground	900 V	1000 V	1000 V	1000 V	1000 V	1000 V	1000 V
	Contact/contact	1150 V	1550 V	1550 V	1550 V	1550 V	1550 V	1550 V
Working voltage*		250 V	250 V	250 V	250 V	250 V	250 V	250 V
Insulation group*		A	A	A	A	A	A	A
Working current **	+ 20° C	GT 1+2 = 4 A max.	4 A max.	2 A	2 A	2 A	2 A	2 A
	+ 70° C			1 A	1 A	1 A	1 A	1 A
	+ 100° C	GT 3 = 2 A max.		0,5 A	0,5 A	0,5 A	0,5 A	0,5 A
Operating temperature	Quality cl. I	-65° ... + 125° C	-65° ... + 125° C	-55° C	-55° C	-55° C	-55° C	-55° C
	Quality cl. II	-55° ... + 125° C	
	Quality cl. III	-25° ... + 85° C		+125° C	+125° C	+125° C	+125° C	+125° C
Moulding material	PC = Polycarbonat	X	X					
	PBTP = Polyester			X	X	X	X	X
	PA = Polyamid							
Contact material								
Coding system	with coding			X	X	X	X	X
	without coding	X	X					
Flammability	PC = Polycarbonat	UL 94 V-1						
	PBTP = Polyester	UL 94 V-0						
	PA = Polyamid	UL 94 H-B						
Insertion and withdrawal forces	F max.	13p. 32 N/AU • 30 N/AG		32p 30N	16p 15N	32p 30N	16p 15N	78+2p 90 52+2p 75 60+4p 85 40+4p 70 42+6p 85 28+6p 70 24+8p 80
	F max.	21p. 33 N/AU • 48 N/AG		64p 60N	32p 30N	64p 60N	32p 30N	
	F max.	31p. 48 N/AU • 70 N/AG	31+1p 80N			96p 90N	48p 45N	
Life	Quality class 1 ≥ 500 cycles	X	X	X	X	X	X	X
	Quality class 2 ≥ 400 cycles	X		X	X	X	X	X
	Quality class 3 ≥ 50 cycles	X		X	X	X	X	X
	AG	X						

* according to SEV 50 V

** Derating diagrams see page 189

9017935 0000216 106