

COMBINATION D-SUB CONTACTS

High power contacts – Solder cup or crimp – angled

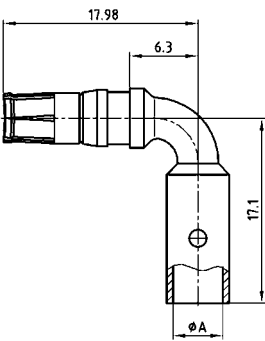


RoHS compliant – CSA listed, File No.: LR 115000-1 –UL listed, File No.: E 228329

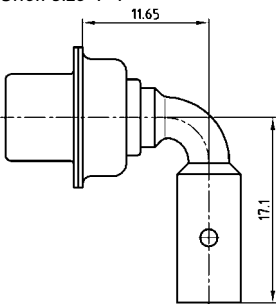
- DESCRIPTION**
- Precision machined contacts
 - Quality class 3: 50 mating cycles (gold plated)
 - Quality class 1: 500 mating cycles (gold plated)
 - Other quality classes on request

PRODUCT DRAWING

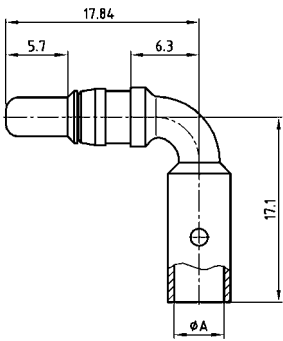
Socket contact



Installation dimension
Shell size 1-4



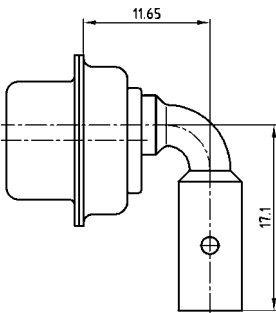
Plug contact



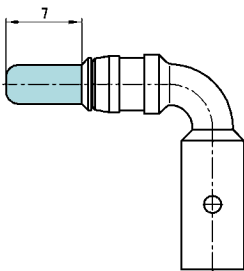
Wire stripping



Installation dimension
Shell size 5



Premating contact



| AWG | Current rating | Ø A +0.15 | Crimp Plier Part.no. 360X12269X |
|-------|----------------|-----------|------------------------------------|
| 16-20 | 10 A | 1.70 | 1.40/1.25 |
| 12-14 | 20 A | 2.60 | 1.85/1.65 |
| 10-12 | 30 A | 3.70 | 2.30/2.05 |
| 8-10 | 40 A | 4.60 | 2.30/2.05 |

ORDER DATA

| SOCKET CONTACT | | | | |
|----------------|---------|--------|---------------|---------------|
| Contact type | AWG | Ampere | Quality class | Part Number |
| Socket | 16...20 | 10 A | 1 | 132 C 16019 X |
| Socket | 16...20 | 10 A | 3 | 132 A 16019 X |
| Socket | 12...14 | 20 A | 1 | 132 C 16029 X |
| Socket | 12...14 | 20 A | 3 | 132 A 16029 X |
| Socket | 10...12 | 30 A | 1 | 132 C 16039 X |
| Socket | 10...12 | 30 A | 3 | 132 A 16039 X |
| Socket | 8...10 | 40 A | 1 | 132 C 16049 X |
| Socket | 8...10 | 40 A | 3 | 132 A 16049 X |

| PLUG CONTACT | | | | |
|--------------|---------|--------|---------------|---------------|
| Contact type | AWG | Ampere | Quality class | Part Number |
| Plug | 16...20 | 10 A | 1 | 131 C 16019 X |
| Plug | 16...20 | 10 A | 3 | 131 A 16019 X |
| Plug | 12...14 | 20 A | 1 | 131 C 16029 X |
| Plug | 12...14 | 20 A | 3 | 131 A 16029 X |
| Plug | 10...12 | 30 A | 1 | 131 C 16039 X |
| Plug | 10...12 | 30 A | 3 | 131 A 16039 X |
| Plug | 8...10 | 40 A | 1 | 131 C 16049 X |
| Plug | 8...10 | 40 A | 3 | 131 A 16049 X |

| PREMATING CONTACT | | | | |
|-------------------|---------|--------|---------------|---------------|
| Contact type | AWG | Ampere | Quality class | Part Number |
| Plug premating | 16...20 | 10 A | 1 | 131 C 16119 X |
| Plug premating | 12...14 | 20 A | 1 | 131 C 16129 X |
| Plug premating | 10...12 | 30 A | 1 | 131 C 16139 X |
| Plug premating | 8...10 | 40 A | 1 | 131 C 16149 X |