



## USB Connector A Type PCB Thru-hole

### SPECIFICATIONS

#### Materials

Insulator: thermoplastic, glass filled, UL 94V-0

Contacts: Phosphor bronze

Plated: 10µ" gold plated

SMD Plated: 120µ" tin plated

Plastic: PBT

Shell: Copper alloy, tin plated

#### Electrical

Insulation Resistance: 1000 MΩ minimum

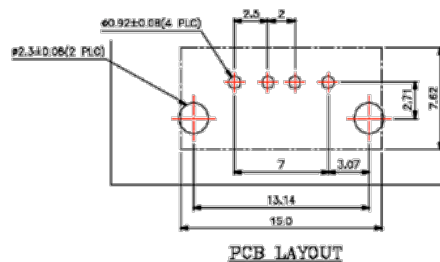
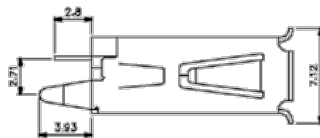
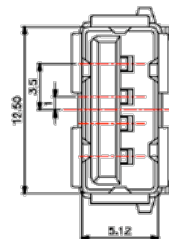
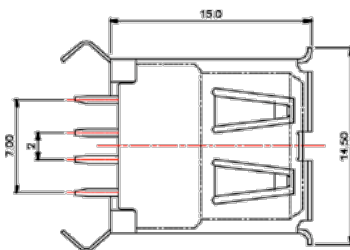
Contact Resistance: 30 mΩ Max. initial

Dielectric Withstanding Voltage: 750V AC for one minute

Current: 1.5 Ampere max. per contact at 30°C T-rise

Voltage: 30V AC (rms)

Temperature: -55°C ~85°C



PCB LAYOUT

## Order Information-----

**33UBA D - 04 S W 1**  
1 2 3 4 5 6

#### 1.Series No.

33UBA

#### 3.No. Of Contacts

04: 4 pin

#### 5. Insulator Color

W: White

#### 2.Terminal Version

D: Dip

#### 4.Connector Type

S: Female

#### 6. Packaging

1: Packed in tray



File #: 127344



File #: LR97981