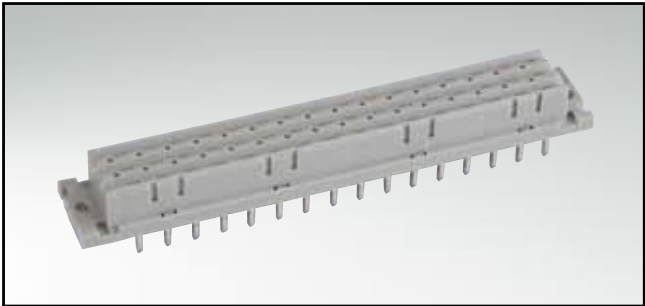


LOW PROFILE TYPE F

Female connector – straight – 32 and 48 positions

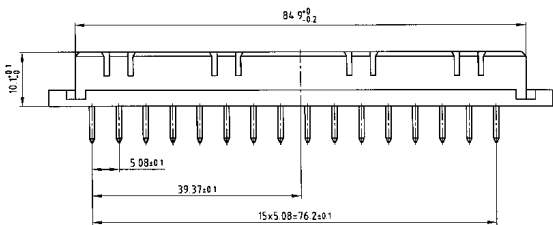


RoHS compliant

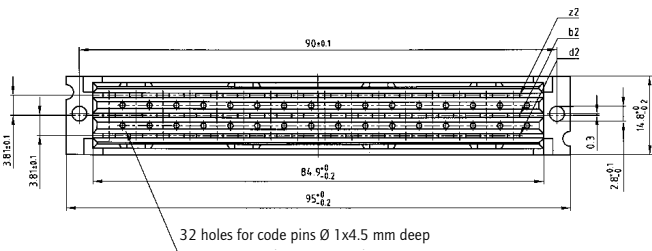
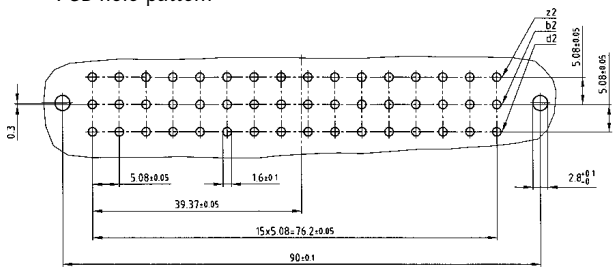
DESCRIPTION

- Solder pin
- Quality class 2 (other quality classes on request)

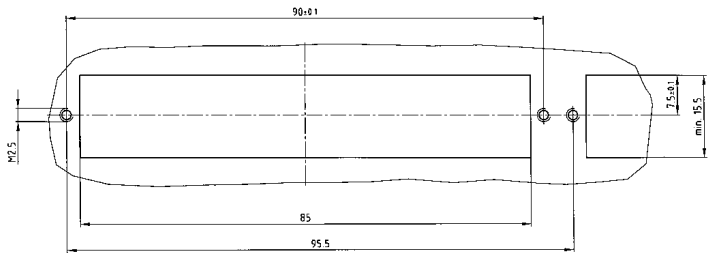
PRODUCT DRAWING



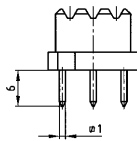
PCB-hole pattern



Panel cutout



Solder pin straight



ORDER DATA

(Dim. = mm)

No. of Pos.	Row	• = contact, + = no contact				Solder pin straight
		Pos.	2	4	6	
32	z		•	•	•	122 B 11739 X
	b		•	•	•	
	d		+	+	+	
32	z		•	•	•	122 B 11749 X
	b		+	+	+	
	d		•	•	•	
48	z		•	•	•	122 B 11759 X
	b		•	•	•	
	d		•	•	•	