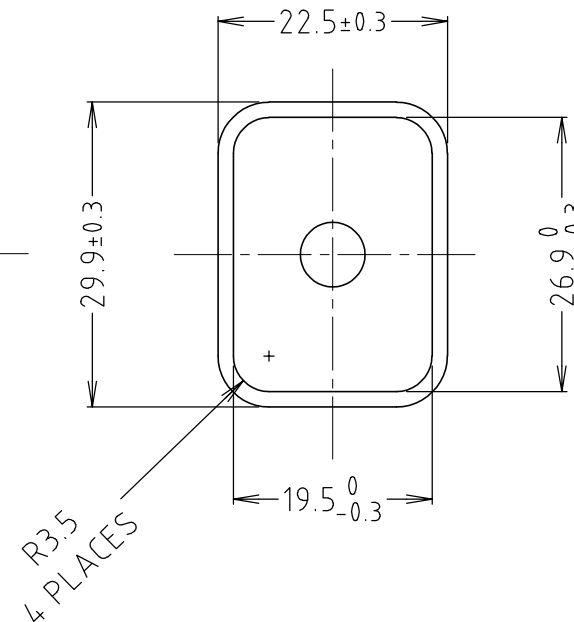
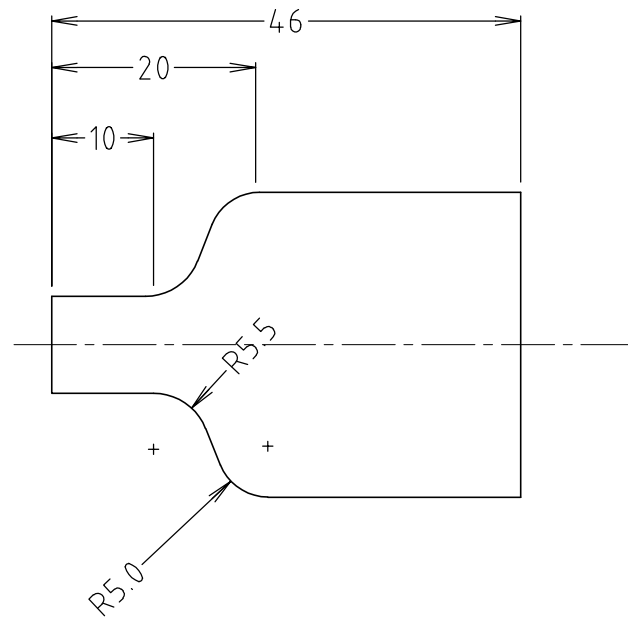
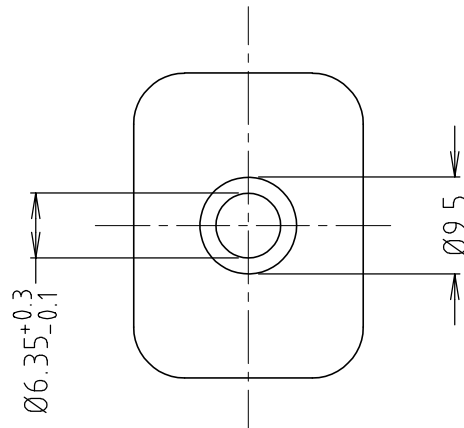
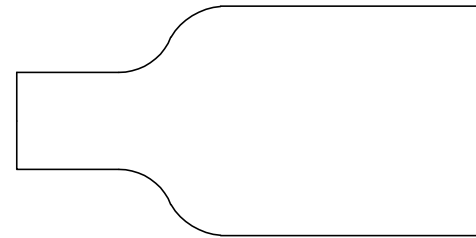


ISS.	AMEND	DATE
1	RETRACE	28/07/76
2	REDRAWN	14/02/90
3	DIMS AMENDED	10/04/97
4	TEMP RATING	25/07/00
5	SHORE RATING	06/04/04
6	MATERIAL UPDATED	05/05/20



WALL THICKNESS MIN 1.2mm, MAX 1.5mm

RATED FOR -20°C / +70°C
VOLTAGE WITHSTAND MIN 2.5KVAC / 1 MIN.

RoHS
COMPLIANT

TOLERANCE
NO DEC. PLACE ± 0.50
1 DEC. PLACE ± 0.25
2 DEC. PLACE ± 0.15
HOLE Ø ± 0.15
ANGLES ± 1/2°
UNLESS OTHERWISE STATED

DO NOT SCALE

Cliff Electronic Components Ltd.

76 Holmethorpe Avenue, Holmethorpe Industrial Estate,
Redhill, Surrey, RH1 2PF, England, UK
Tel: 01737-771375 Fax: 01737-766012 Website: www.cliffuk.co.uk

DIMENSIONS IN MILLIMETERS UNLESS OTHERWISE STATED. WORK TO DIMENSIONS. REMOVE ALL BURRS. IF IN DOUBT ASK.

3rd ANGLE PROJECTION:

MATERIAL: SOFT PVC 60 SHORE FR (-20° TO +70°C) UL94 V0

FINISH: BLACK - GLOSSY

DRAWN: C.A.M.J.

APPROVED: R.W.T.

TITLE: BOOT FOR MS1 SERIES

DRWG. No. **CL1928**

FORM: A4DRWGH