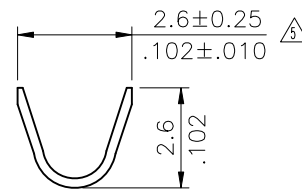
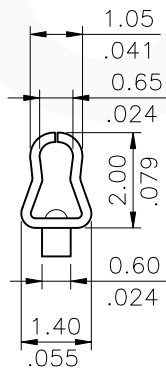


Wire Range	Insulation Diameter	Reel Q'ty
AWG #22~#28	1.60 (.063) MAX.	10,000 PCS.

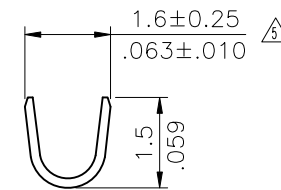
Ordering Code:

CI25 T02 1 P E 0
 ① ② ③ ④ ⑤ ⑥

- ① Series No.
- ② Type: T02= AWG #22 ~ #28
- ③ 1= 1.52μm(60μ") Min. Tin over 0.38μm(15μ") Nickel
- ④ Material: P= Phosphor Bronze
- ⑤ Plating method: E= Pre-tinned
- ⑥ Option: 0= Standard




SEC: A-A



SEC: B-B

RoHS Compliant

SYM	NAME	DATE	REVISIONS	APPROVED BY:	DATE	UNIT: mm / inch	TITLE:	 瀚荃股份有限公司 CviLux Corporation
7	Karen	11/01-19	ECNT119298			UNIT: mm / inch	TITLE:	
6	Yushu	05/15-19	ECRB119028/ECNT119119	DRAWN BY:	Karen	11/01-19'	2.50MM(.098") CRIMP TERMINAL	
5	Sun	11/13-08	ECR08071-3/ECN08572	ENGINEER:	Sun	11/01-19'	MATERIAL:	
4	Hank	3/13/08'	ECN08137, ECR08022-0	CHECKED BY:	Eisley	11/05-19'	FINISH:	
				APPROVED BY:	Eisley	11/05-19'		DRAWING NO. CI2505SK PART NO. CI25T021PE0
								SCALE 6 / 1 SHEET 1 OF 1

CIVILUX
 2019.11.07
 ISSUED